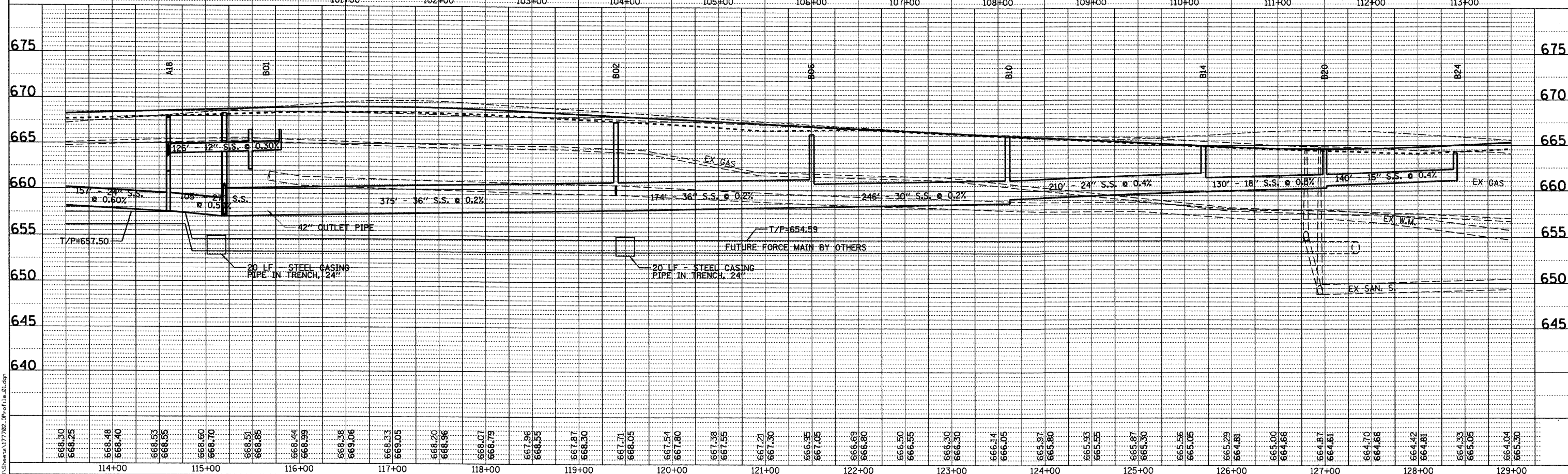
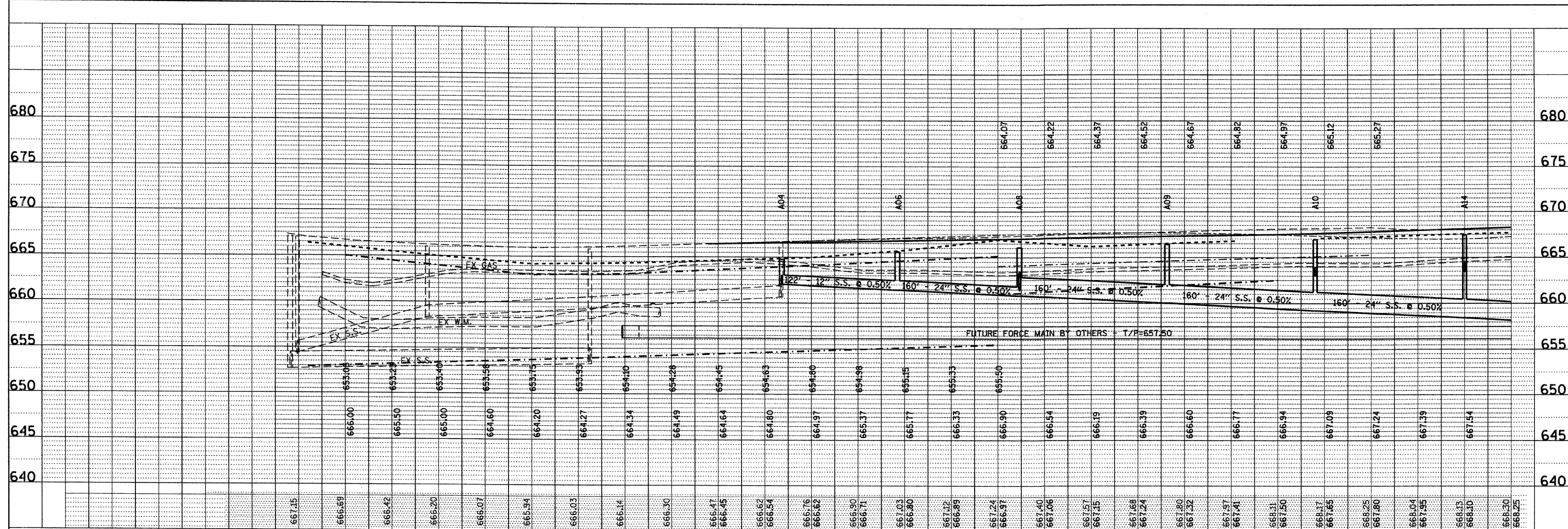


PLAN	REVISIONS	BY	DATE
NOTE BOOK	PLOTTED		
NO.	ALIGNED		
	CHECKED		
	DATE		
	FILE NAME		

PROFILE	REVISIONS	BY	DATE
NOTE BOOK	PLOTTED		
NO.	GRADES CHECKED		
	STRUCTURE NOTATIONS		
	DATE		



688.30	114+00
688.25	
688.48	
688.40	
688.53	
688.55	
688.50	
688.70	
688.51	
688.85	
688.44	
688.99	
688.38	
689.06	
688.33	
689.05	
688.20	
688.96	
688.07	
688.79	
687.96	
688.55	
687.87	
688.30	
687.71	
688.05	
687.54	
687.80	
687.39	
687.55	
687.21	
687.30	
686.95	
687.05	
686.69	
686.80	
686.50	
686.55	
686.30	
686.30	
686.14	
686.05	
685.97	
685.80	
685.93	
685.55	
685.87	
685.30	
685.56	
685.05	
685.29	
684.81	
685.00	
684.66	
684.87	
684.61	
684.70	
684.66	
684.42	
684.81	
684.33	
685.05	
684.04	
685.30	

DESIGNED - MK	REVISED -
DRAWN - DW	REVISED -
CHECKED - MH	REVISED -
DATE - 12/20/2010	REVISED -

**KANE COUNTY
DIVISION OF TRANSPORTATION
ORCHARD ROAD RECONSTRUCTION**

**ORCHARD ROAD
DRAINAGE AND UTILITIES PROFILE
STA. 104+00 TO STA. 129+00**

SCALE: 1" = 50' SHEET NO. 9 OF 11 SHEETS STA. 100+00.00 TO STA. 129+00.00

F.A.P. RTE. 336	SECTION 99-00232-01-WR	COUNTY KANE	TOTAL SHEETS 215	SHEET NO. 68
CONTRACT NO. 63541			ILLINOIS FED. AID PROJECT	



200 West Front Street
Wheaton, IL 60167

49,9999 / JN.
12/17/2010
C:\117782\CAD\Sheet\117782_09_Profile_01.dwg