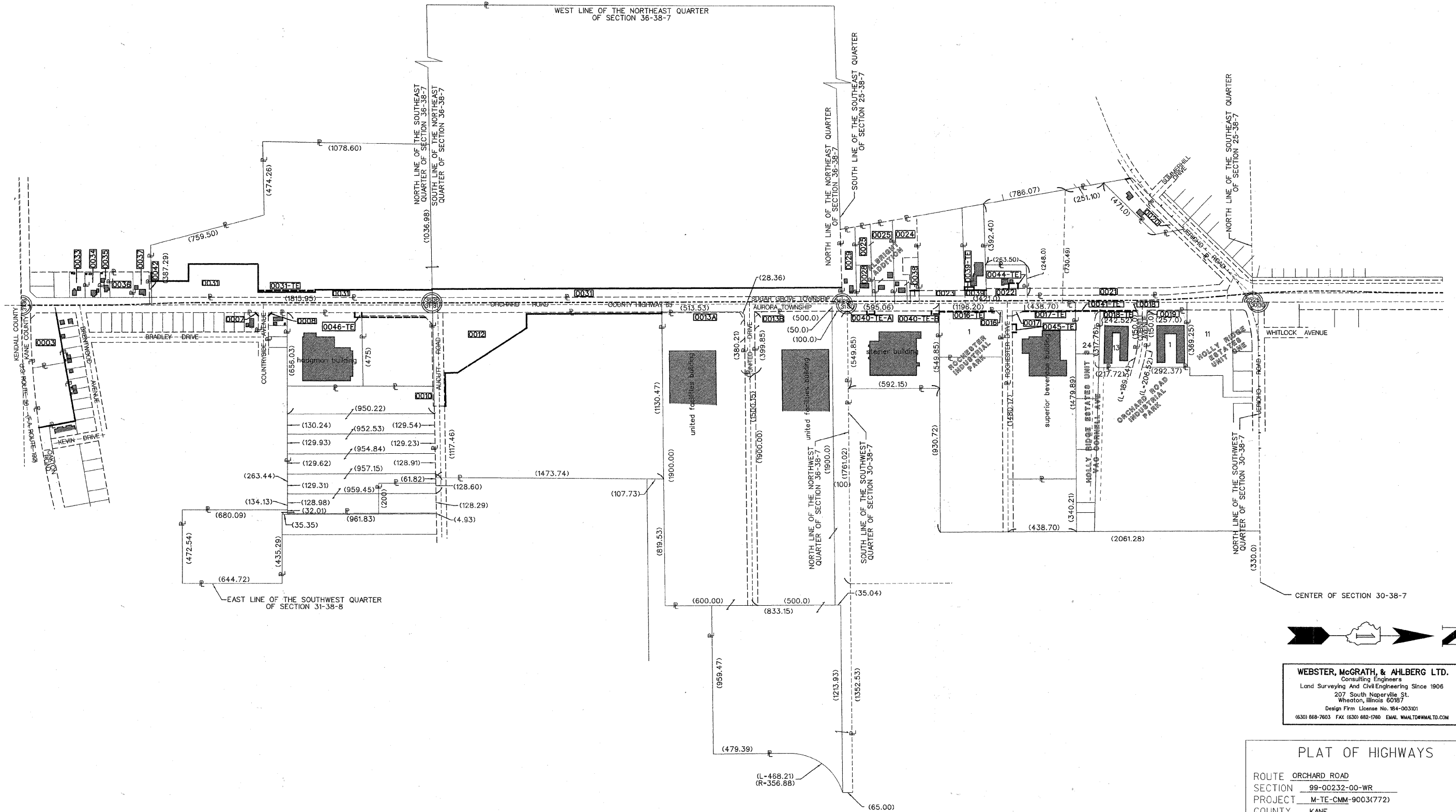


COUNTY OF KANE
DIVISION OF TRANSPORTATION



WEBSTER, McGRATH, & AHLBERG LTD.
 Consulting Engineers
 Land Surveying And Civil Engineering Since 1906
 207 South Naperville St.
 Wheaton, Illinois 60187
 Design Firm License No. 184-003101
 (630) 868-7603 FAX (630) 862-1760 EMAIL WMALTO@WMALTD.COM

PLAT OF HIGHWAYS
 ROUTE ORCHARD ROAD
 SECTION 99-00232-00-WR
 PROJECT M-TE-CMM-9003(772)
 COUNTY KANE
 JOB NO. C-91-362-11
 STA 100+00.00 TO STA 171+62.60
 SCALE 1" = 300'
 PLAT SHEET 7 OF 8
 SHEET 80 OF 215

ORCHARD ROAD KANE COUNTY