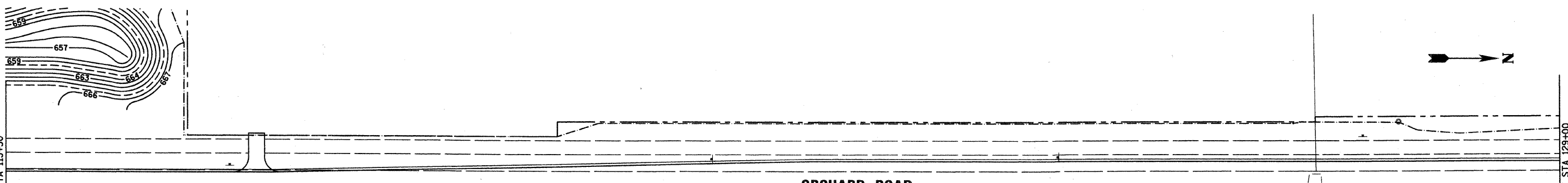
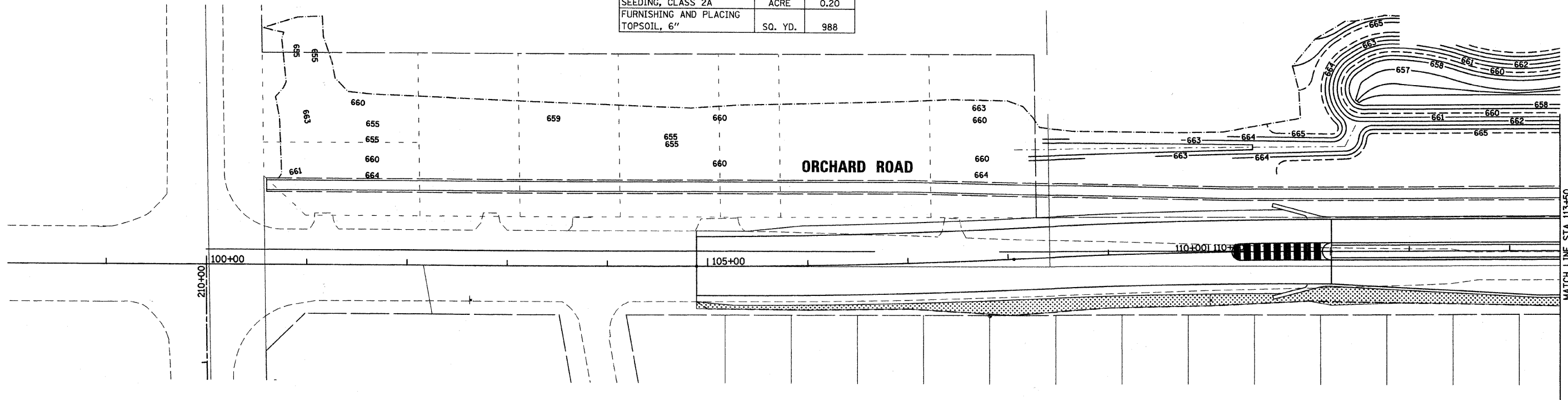


STA. 100+18.80 TO STA. 113+50		
ITEM	UNIT	QUANTITY
SEEDING, CLASS 2A	ACRE	0.20
FURNISHING AND PLACING TOPSOIL, 6"	SQ. YD.	988



LEGEND

	SEEDING CLASS 1A		SEEDING CLASS 4, MODIFIED AND SEEDING CLASS 5, MODIFIED
	SEEDING CLASS 2		SODDING, SALT TOLERANT
	SEEDING CLASS 2A		
	SEEDING CLASS 3		

STA. 113+50 TO STA. 129+00		
ITEM	UNIT	QUANTITY
SEEDING, CLASS 1A	ACRE	0.05
SEEDING, CLASS 2A	ACRE	0.34
SEEDING, CLASS 3	ACRE	0.10
FURNISHING AND PLACING TOPSOIL, 6"	SQ. YD.	2378

4/9/99 / / IN
 12/17/2010
 K:\117702\CAD\Sheets\17702_Landscapn_Stage3_01.dwg

rnjgroup
 Excellence through Ownership
 200 West Front Street
 Wheaton, IL 60187

DESIGNED - MK	REVISED -
DRAWN - DW	REVISED -
CHECKED - MH	REVISED -
DATE - 12/20/2010	REVISED -

KANE COUNTY
DIVISION OF TRANSPORTATION
ORCHARD ROAD RECONSTRUCTION

LANDSCAPING PLAN
STAGE III
 SCALE: 1" = 50' SHEET NO. 5 OF 11 SHEETS STA. 100+00.00 TO STA. 129+00.00

F.A.P. RTE.	SECTION	COUNTY	TOTAL SHEETS	SHEET NO.
336	99-00232-01-WR	KANE	215	92
				CONTRACT NO. 63541
ILLINOIS FED. AID PROJECT				