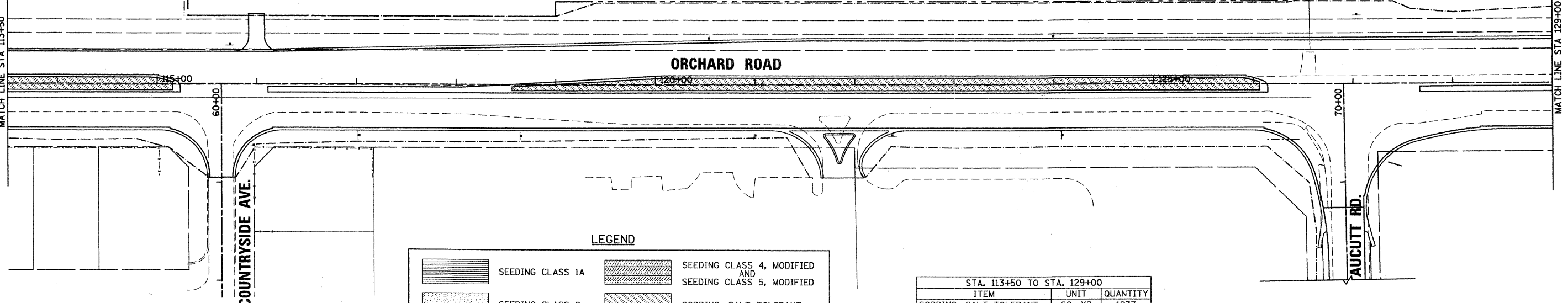
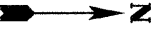
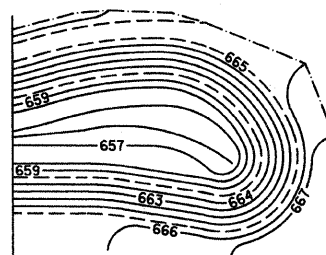
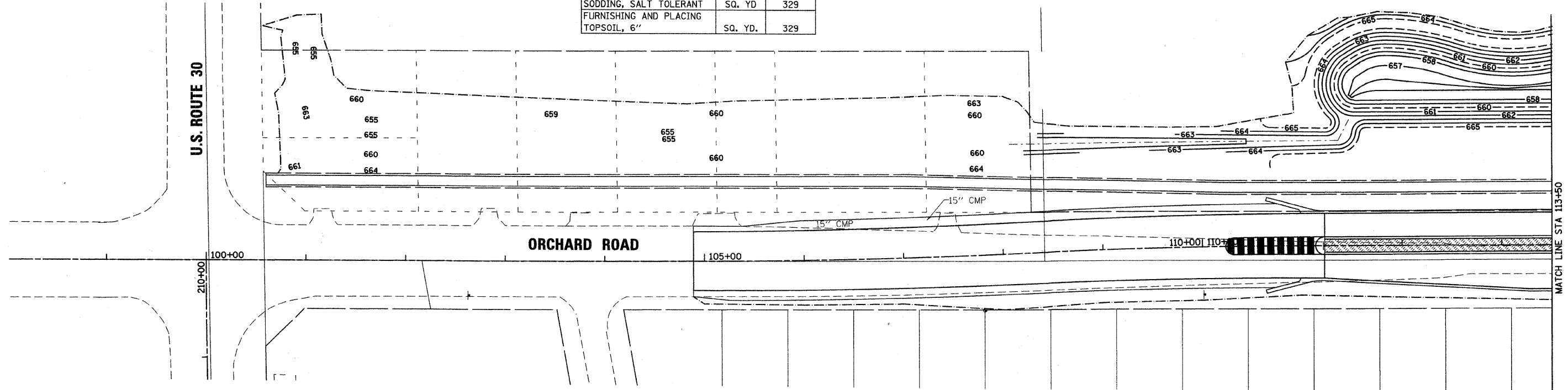




STA. 111+22.41 TO STA. 113+50		
ITEM	UNIT	QUANTITY
SODDING, SALT TOLERANT	SQ. YD.	329
FURNISHING AND PLACING TOPSOIL, 6"	SQ. YD.	329



LEGEND

	SEEDING CLASS 1A		SEEDING CLASS 4, MODIFIED AND SEEDING CLASS 5, MODIFIED
	SEEDING CLASS 2		SODDING, SALT TOLERANT
	SEEDING CLASS 2A		
	SEEDING CLASS 3		

STA. 113+50 TO STA. 129+00		
ITEM	UNIT	QUANTITY
SODDING, SALT TOLERANT	SQ. YD.	1237
FURNISHING AND PLACING TOPSOIL, 6"	SQ. YD.	1237

GENERAL NOTES

- 1.) SEE DETENTION BASIN GRADING PLANS FOR RESTORATION OF BASIN AREAS.

49,9999 / IN.
 dwg.dwg
 12/17/2010
 R:\1177262\CAD\Sheets\1177262_Landscap_S Stage4_B.dwg



200 West Front Street
Wheaton, IL 60187

DESIGNED - MK	REVISED -
DRAWN - DW	REVISED -
CHECKED - MH	REVISED -
DATE - 12/20/2010	REVISED -

**KANE COUNTY
DIVISION OF TRANSPORTATION
ORCHARD ROAD RECONSTRUCTION**

**LANDSCAPING PLAN
STAGE IV**

SCALE: 1" = 50' SHEET NO. 9 OF 11 SHEETS STA. 100+00.00 TO STA. 129+00.00

F.A.P. RTE.	SECTION	COUNTY	TOTAL SHEETS	SHEET NO.
336	99-00232-01-WR	KANE	215	96
CONTRACT NO. 63541			ILLINOIS FED. AID PROJECT	