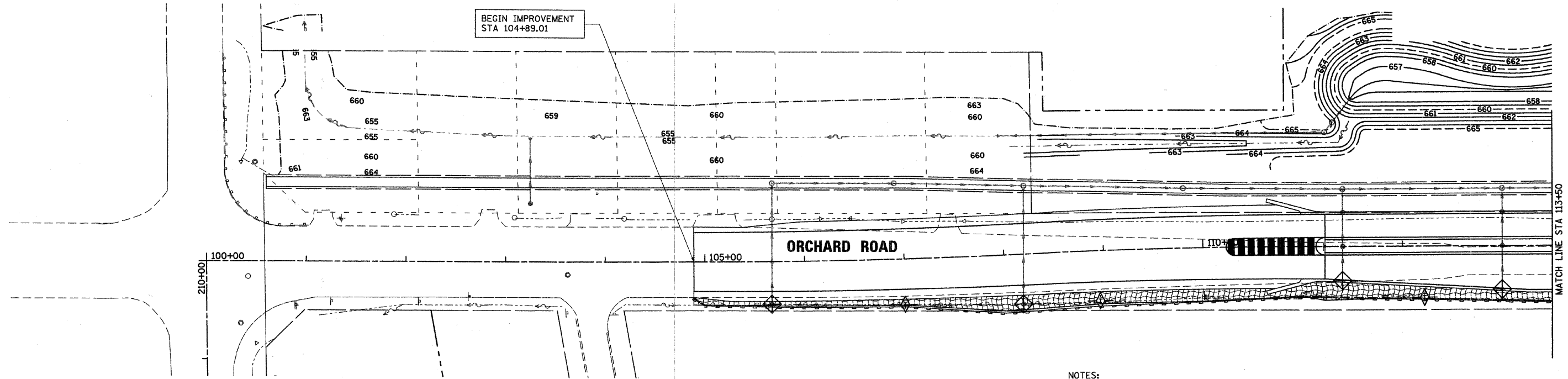
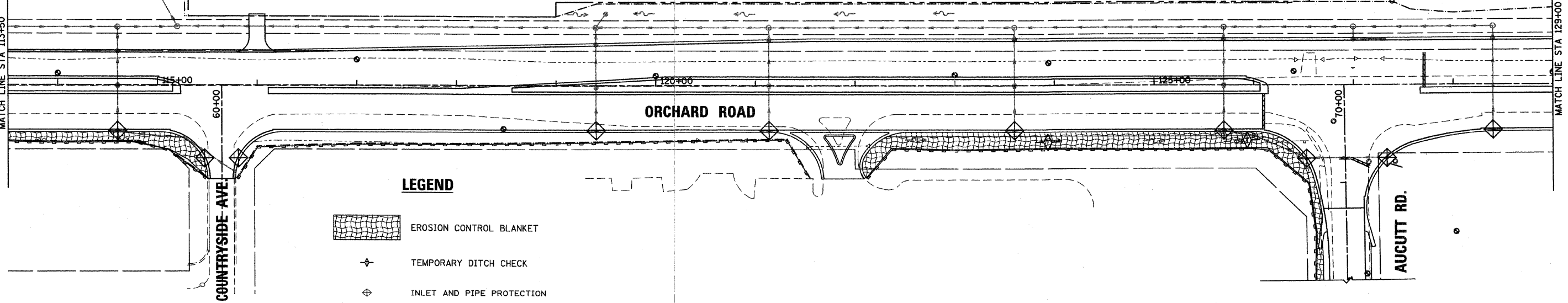
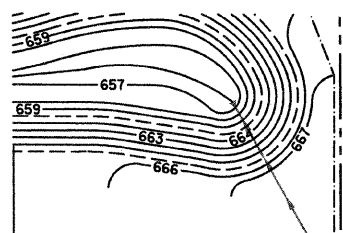




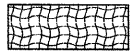


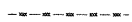
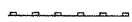
BEGIN IMPROVEMENT  
STA 104+89.01



- NOTES:
- 1: FOR EROSION AND SEDIMENT CONTROL MEASURES AT STORMWATER BASINS SEE BASIN GRADING SHEETS
  - 2: COORDINATE THE WORK ON THIS SHEET WITH THE LANDSCAPING PLANS
  - 3: ALL SEEDED SURFACES SHALL BE COVERED WITH AN APPROVED EROSION CONTROL BLANKET WITHIN 7 CALENDAR DAYS OF FINAL GRADING



**LEGEND**

-  EROSION CONTROL BLANKET
-  TEMPORARY DITCH CHECK
-  INLET AND PIPE PROTECTION
-  TEMPORARY FENCE
-  PERIMETER EROSION BARRIER

49-9999 / IN.  
chades  
12/17/2010  
K:\117782-Cad\Sheets\117782\_Erosion\_Stage3\_Bldg

**rjngroup**  
Excellence through Ownership  
200 West Front Street  
Wheaton, IL 60187

DESIGNED - MK	REVISED -
DRAWN - DW	REVISED -
CHECKED - MH	REVISED -
DATE - 12/20/2010	REVISED -

**KANE COUNTY  
DIVISION OF TRANSPORTATION  
ORCHARD ROAD RECONSTRUCTION**

**EROSION AND SEDIMENT CONTROL PLAN  
STAGE III**  
SCALE: 1" = 50' SHEET NO. 6 OF 15 SHEETS STA. 100+00.00 TO STA. 129+00.00

F.A.P. RTE. 336	SECTION 99-00232-01-WR	COUNTY KANE	TOTAL SHEETS 215	SHEET NO. 104
CONTRACT NO. 63541				
ILLINOIS FED. AID PROJECT				