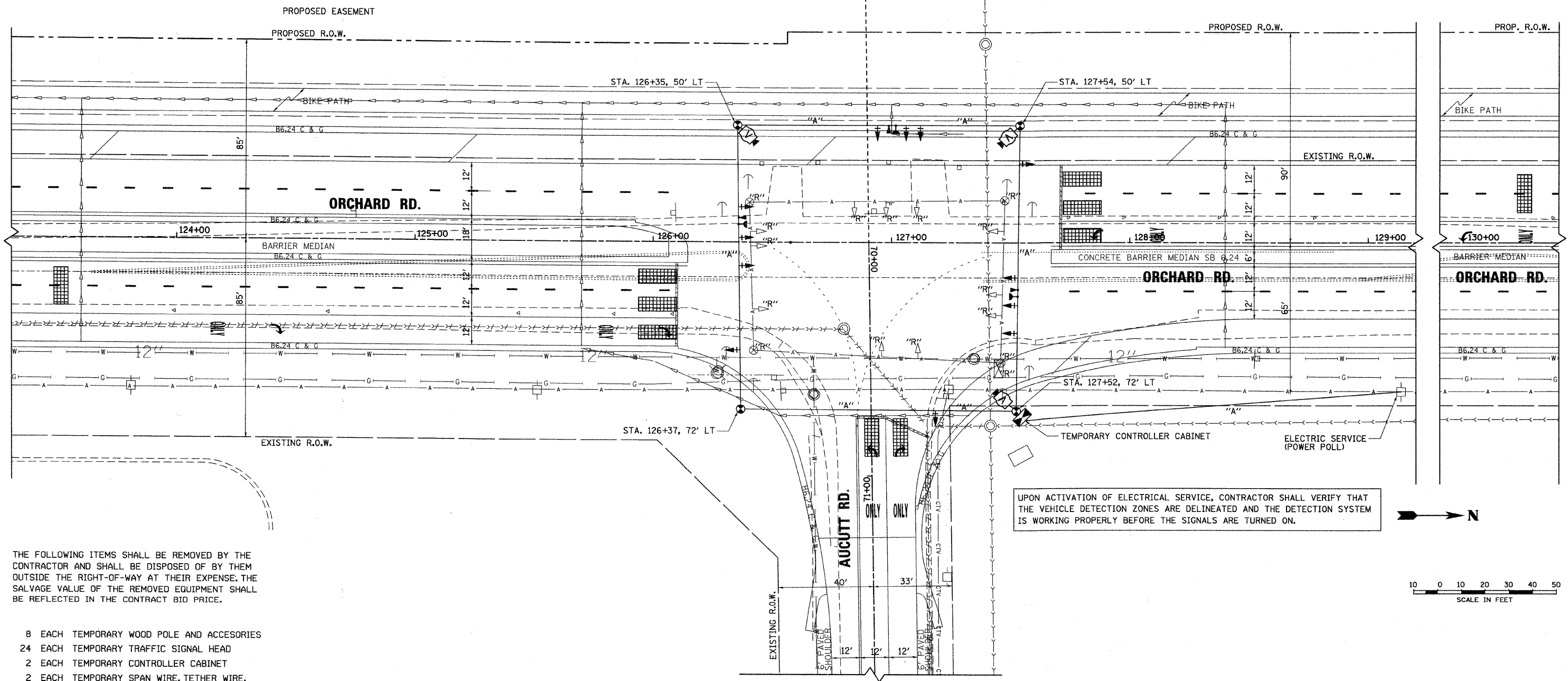


NOTES FOR TEMPORARY TRAFFIC SIGNALS

1. ALL CONTROL EQUIPMENT FOR THE TEMPORARY TRAFFIC SIGNAL SHALL BE FURNISHED BY THE CONTRACTOR UNLESS OTHERWISE STATED IN THE PLANS.
2. CONTROLLERS USED FOR TEMPORARY TRAFFIC SIGNALS SHALL BE FULLY ACTUATED NEMA MICROPROCESSOR BASED, CAPABLE OF SUPPLYING 255 SECONDS OF CYCLE LENGTH AND INDIVIDUAL PHASE LENGTH SETTINGS UP TO 99 SECONDS.
3. A TIME BASE COORDINATING UNIT SHALL BE SUPPLIED WITH EACH TEMPORARY TRAFFIC SIGNAL. COMPATIBLE TIME BASE COORDINATING UNITS SHALL BE SUPPLIED UPON REQUEST TO MATCH ADJACENT SYSTEMS OR ON PROJECTS CONTAINING MULTIPLE SIGNAL INSTALLATIONS. THE CONTROLLER SETTINGS SHALL BE SET IN THE FIELD AS DIRECTED BY THE TEMPORARY TRAFFIC SIGNAL TIMING CONSULTANT AS APPROVED BY KDOT TRAFFIC.
4. ALL TRAFFIC SIGNAL SECTIONS SHALL BE 12 INCHES. THE TEMPORARY TRAFFIC SIGNAL HEADS SHALL BE PLACED AS INDICATED ON THE TEMPORARY TRAFFIC SIGNAL PLAN OR AS DIRECTED BY THE ENGINEER. ALL TEMPORARY TRAFFIC SIGNAL HEADS SHALL BE LED. THE CONTRACTOR SHALL FURNISH ENOUGH CABLE SLACK TO RELOCATE HEADS TO ANY POSITION ON THE SPAN WIRE OR AT LOCATIONS ILLUSTRATED ON THE PLANS FOR CONSTRUCTION STAGING. THE TEMPORARY TRAFFIC SIGNAL SHALL REMAIN IN OPERATION DURING ALL SIGNAL HEAD RELOCATIONS. EACH TEMPORARY TRAFFIC SIGNAL HEAD SHALL HAVE ITS OWN CABLE FROM THE CONTROLLER CABINET TO THE SIGNAL HEAD.
5. ALL EXISTING STREET NAME AND INTERSECTION REGULATORY SIGNS SHALL BE REMOVED FROM EXISTING POLES, RELOCATED, AND SECURELY FASTENED TO THE SIGNAL SPAN WIRE.
6. ALL LABOR AND MATERIAL TO COMPLY WITH THESE REQUIREMENTS SHALL BE INCLUDED IN THE BID PRICE OF "TEMPORARY TRAFFIC SIGNAL INSTALLATION".
7. TEMPORARY VIDEO DETECTION SYSTEM AND TEMPORARY LIGHTING SHALL BE CONSIDERED AS PART OF THE PAY ITEM "TEMPORARY TRAFFIC SIGNAL INSTALLATION".
8. CONTRACTOR TO VERIFY LOCATION AND DIRECTION OF MAST ARMS AND CAMERAS.
9. ALL EMERGENCY VEHICLE PREEMPTION EQUIPMENT (LIGHT DETECTORS, LIGHT DETECTOR AMPLIFIER, ETC.) AS SHOWN ON THE TEMPORARY TRAFFIC SIGNAL PLANS SHALL BE PROVIDED BY THE CONTRACTOR.
10. TEMPORARY WOOD TRAFFIC SIGNAL POLE SHALL BE 50 FEET LONG.
11. ALL NECESSARY TEMPORARY TRAFFIC SIGNAL TIMING SHALL BE PAID FOR AS "TEMPORARY TRAFFIC SIGNAL TIMING".



THE FOLLOWING ITEMS SHALL BE REMOVED BY THE CONTRACTOR AND SHALL BE DISPOSED OF BY THEM OUTSIDE THE RIGHT-OF-WAY AT THEIR EXPENSE. THE SALVAGE VALUE OF THE REMOVED EQUIPMENT SHALL BE REFLECTED IN THE CONTRACT BID PRICE.

- 8 EACH TEMPORARY WOOD POLE AND ACCESORIES
- 24 EACH TEMPORARY TRAFFIC SIGNAL HEAD
- 2 EACH TEMPORARY CONTROLLER CABINET
- 2 EACH TEMPORARY SPAN WIRE, TETHER WIRE, ELECTRIC CABLE AND ACCESORIES

UPON ACTIVATION OF ELECTRICAL SERVICE, CONTRACTOR SHALL VERIFY THAT THE VEHICLE DETECTION ZONES ARE DELINEATED AND THE DETECTION SYSTEM IS WORKING PROPERLY BEFORE THE SIGNALS ARE TURNED ON.

DESIGNED - MK	REVISED -
DRAWN - DW	REVISED -
CHECKED - MH	REVISED -
DATE - 12/20/2010	REVISED -

**KANE COUNTY
 DIVISION OF TRANSPORTATION
 ORCHARD ROAD RECONSTRUCTION**

**TEMPORARY TRAFFIC SIGNAL INSTALLATION
 AND EXISTING TRAFFIC SIGNAL REMOVAL PLAN
 ORCHARD ROAD AND AUCUTT ROAD**
 SCALE: 1" = 20' SHEET NO. 2 OF 13 SHEETS STA. TO STA.

F.A.P. RTE. 336	SECTION 99-00232-01-WR	COUNTY KANE	TOTAL SHEETS 215	SHEET NO. 114
CONTRACT NO. 63541				
ILLINOIS FED. AID PROJECT				