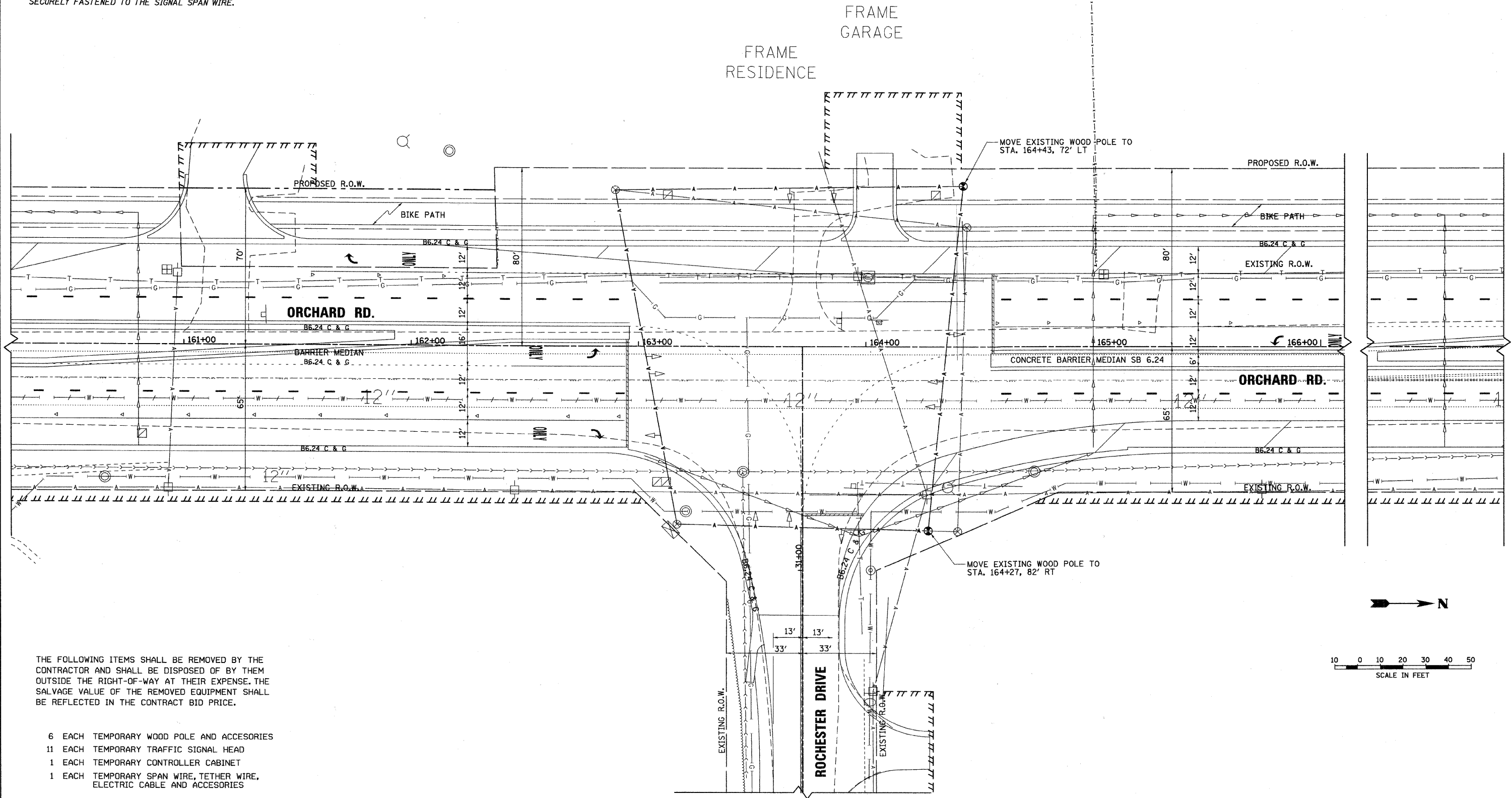


NOTES FOR TEMPORARY TRAFFIC SIGNALS

1. ALL CONTROL EQUIPMENT FOR THE TEMPORARY TRAFFIC SIGNAL SHALL BE FURNISHED BY THE CONTRACTOR UNLESS OTHERWISE STATED IN THE PLANS.
2. ALL NEW TRAFFIC SIGNAL SECTIONS SHALL BE 12 INCHES. THE TEMPORARY TRAFFIC SIGNAL HEADS SHALL BE PLACED AS INDICATED ON THE TEMPORARY TRAFFIC SIGNAL PLAN OR AS DIRECTED BY THE ENGINEER. ALL TEMPORARY TRAFFIC SIGNAL HEADS SHALL BE LED. THE CONTRACTOR SHALL FURNISH ENOUGH CABLE SLACK TO RELOCATE HEADS TO ANY POSITION ON THE SPAN WIRE OR AT LOCATIONS ILLUSTRATED ON THE PLANS FOR CONSTRUCTION STAGING. THE TEMPORARY TRAFFIC SIGNAL SHALL REMAIN IN OPERATION DURING ALL SIGNAL HEAD RELOCATIONS. EACH TEMPORARY TRAFFIC SIGNAL HEAD SHALL HAVE ITS OWN CABLE FROM THE CONTROLLER CABINET TO THE SIGNAL HEAD.
3. ALL EXISTING STREET NAME AND INTERSECTION REGULATORY SIGNS SHALL BE REMOVED FROM EXISTING POLES, RELOCATED, AND SECURELY FASTENED TO THE SIGNAL SPAN WIRE.
4. ALL LABOR AND MATERIAL TO COMPLY WITH THESE REQUIREMENTS SHALL BE INCLUDED IN THE BID PRICE OF "MODIFY TEMPORARY TRAFFIC SIGNAL INSTALLATION".
5. ALL EMERGENCY VEHICLE PREEMPTION EQUIPMENT (LIGHT DETECTORS, LIGHT DETECTOR AMPLIFIER, ETC.) AS SHOWN ON THE TEMPORARY TRAFFIC SIGNAL PLANS SHALL BE PROVIDED BY THE CONTRACTOR.
6. TEMPORARY WOOD TRAFFIC SIGNAL POLE SHALL BE 50 FEET LONG.
7. ALL NECESSARY TEMPORARY TRAFFIC SIGNAL TIMING SHALL BE PAID FOR AS "TEMPORARY TRAFFIC SIGNAL TIMING".



THE FOLLOWING ITEMS SHALL BE REMOVED BY THE CONTRACTOR AND SHALL BE DISPOSED OF BY THEM OUTSIDE THE RIGHT-OF-WAY AT THEIR EXPENSE. THE SALVAGE VALUE OF THE REMOVED EQUIPMENT SHALL BE REFLECTED IN THE CONTRACT BID PRICE.

- 6 EACH TEMPORARY WOOD POLE AND ACCESSORIES
- 11 EACH TEMPORARY TRAFFIC SIGNAL HEAD
- 1 EACH TEMPORARY CONTROLLER CABINET
- 1 EACH TEMPORARY SPAN WIRE, TETHER WIRE, ELECTRIC CABLE AND ACCESSORIES

DESIGNED - MK	REVISED -
DRAWN - DW	REVISED -
CHECKED - MH	REVISED -
DATE - 12/20/2010	REVISED -

**KANE COUNTY
DIVISION OF TRANSPORTATION
ORCHARD ROAD RECONSTRUCTION**

**EXISTING TEMPORARY TRAFFIC SIGNALS
AND REMOVAL PLANS
ORCHARD ROAD AND ROCHESTER DRIVE**

SCALE: 1" = 20' SHEET NO. 4 OF 13 SHEETS STA. TO STA.

F.A.P. RTE. 336	SECTION 99-00232-01-WR	COUNTY KANE	TOTAL SHEETS 215	SHEET NO. 116
CONTRACT NO. 63541				
ILLINOIS FED. AID PROJECT				

2010/06/06 / IN
 checked
 12/17/2010
 R:\1117782\CAD\Sheet\17782_Signal_Rchestr_temp.dgn