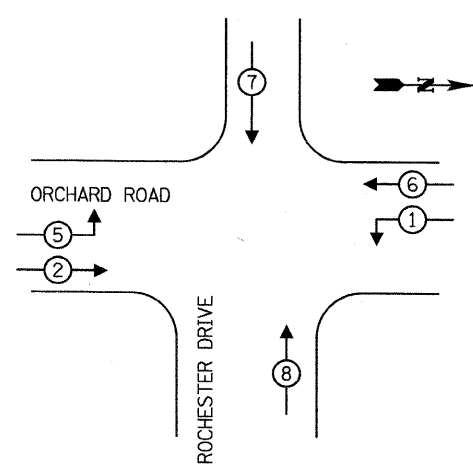


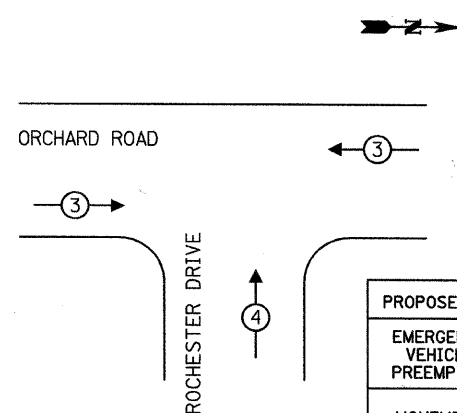
CABLE PLAN

CONTROLLER SEQUENCE

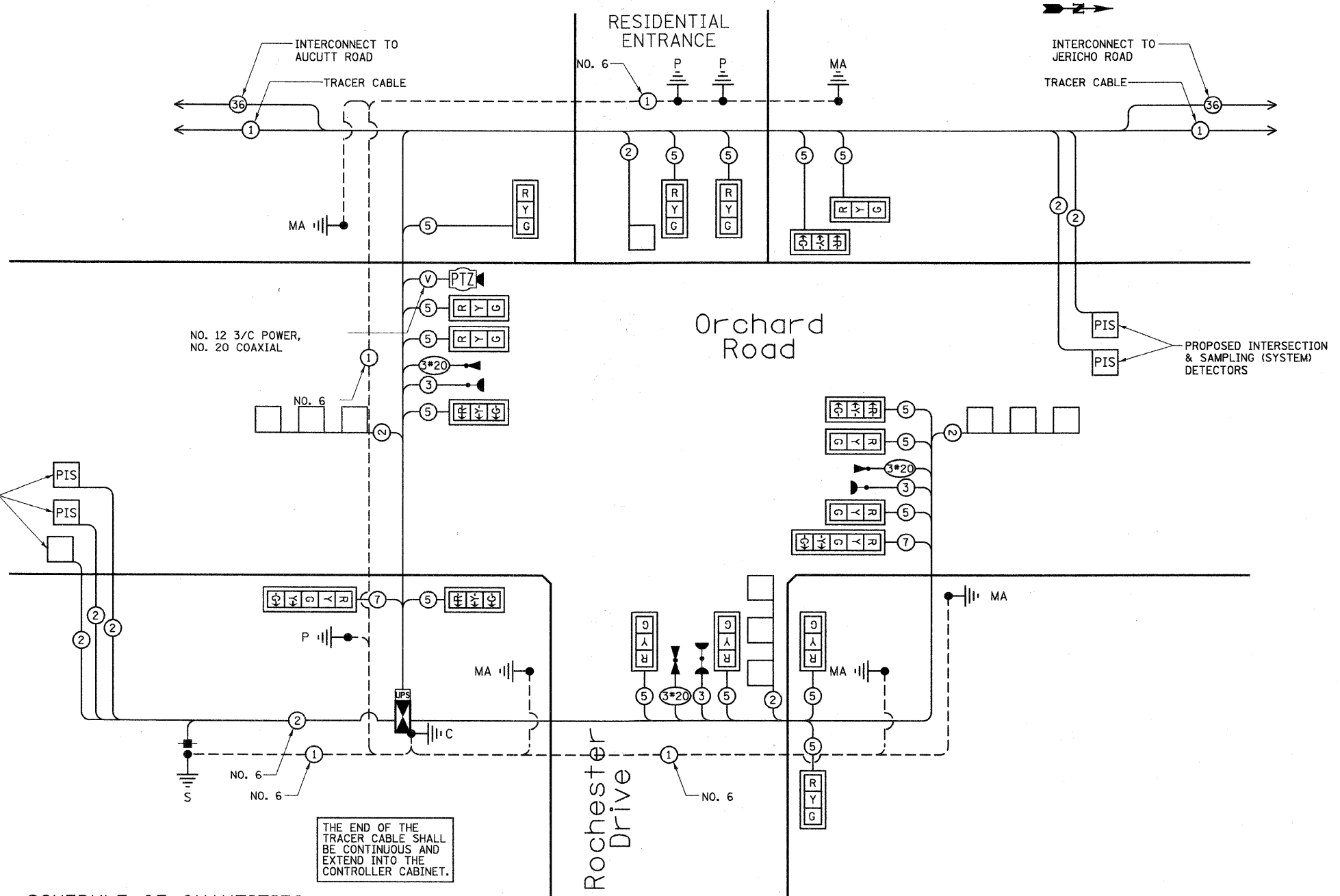


PHASE DESIGNATION DIAGRAM

EMERGENCY VEHICLE PREEMPTION SEQUENCE



| PROPOSED EMERGENCY VEHICLE PREEMPTORS | | |
|---------------------------------------|-----|---|
| EMERGENCY VEHICLE PREEMPTOR | 3 | 4 |
| MOVEMENT | ← → | ↑ |



SCHEDULE OF QUANTITIES

| | | | |
|-------|--|-----|---|
| 551 | FOOT CONDUIT IN TRENCH, 2" DIA., GALVANIZED STEEL | 1 | EACH STEEL COMBINATION MAST ARM ASSEMBLY AND POLE 62 FT. |
| 109 | FOOT CONDUIT IN TRENCH, 2 1/2" DIA., GALVANIZED STEEL | 1 | EACH STEEL COMBINATION MAST ARM ASSEMBLY AND POLE 68 FT. |
| 42 | FOOT CONDUIT IN TRENCH, 3" DIA., GALVANIZED STEEL | 12 | FOOT CONCRETE FOUNDATION, TYPE A |
| 160 | FOOT CONDUIT IN TRENCH, 4" DIA., GALVANIZED STEEL | 4 | FOOT CONCRETE FOUNDATION, TYPE C |
| 118 | FOOT CONDUIT PUSHED, 2" DIA., GALVANIZED STEEL | 39 | FOOT CONCRETE FOUNDATION, TYPE E 36-INCH DIAMETER |
| 221 | FOOT CONDUIT PUSHED, 4" DIA., GALVANIZED STEEL | 25 | FOOT CONCRETE FOUNDATION, TYPE E 42-INCH DIAMETER |
| 5 | EACH HANDHOLE | 10 | EACH SIGNAL HEAD, LED, 1-FACE, 3-SECTION, MAST ARM MOUNTED |
| 2 | EACH HEAVY-DUTY HANDHOLE | 6 | EACH SIGNAL HEAD, LED, 1-FACE, 3-SECTION, BRACKET MOUNTED |
| 1 | EACH DOUBLE HANDHOLE | 1 | EACH SIGNAL HEAD, LED, 1-FACE, 5-SECTION, BRACKET MOUNTED |
| 650 | FOOT ELECTRIC CABLE IN CONDUIT, 600V (XLP-TYPE USE) 1/C NO. 10 | 1 | EACH SIGNAL HEAD, LED, 1-FACE, 5-SECTION, MAST ARM MOUNTED |
| 844 | FOOT TRENCH BACKFILL FOR ELECTRICAL WORK | 18 | EACH TRAFFIC SIGNAL BACKPLATE, LOUVERED, ALUMINUM |
| 3 | EACH LUMINAIRE, SODIUM VAPOR, HORIZONTAL MOUNT, 250 WATT | 5 | EACH INDUCTIVE LOOP DETECTOR |
| 2 | EACH RELOCATE EXISTING WOOD POLES | 3 | EACH LIGHT DETECTOR |
| 1 | EACH FULL-ACTUATED CONTROLLER AND TYPE IV CABINET | 3 | EACH LIGHT DETECTOR AMPLIFIER |
| 1 | EACH UNINTERRUPTIBLE POWER SUPPLY, STANDARD | 1 | EACH REMOVE TEMPORARY TRAFFIC SIGNAL INSTALLATION |
| 466 | FOOT ELECTRIC CABLE IN CONDUIT, SIGNAL NO. 14 3C | 218 | FOOT COAXIAL CABLE IN CONDUIT |
| 3,772 | FOOT ELECTRIC CABLE IN CONDUIT, SIGNAL NO. 14 5C | 1 | EACH VIDEO MONITORING PTZ CAMERA SYSTEM |
| 271 | FOOT ELECTRIC CABLE IN CONDUIT, SIGNAL NO. 14 7C | 752 | FOOT PREFORMED DETECTOR LOOP |
| 3,504 | FOOT ELECTRIC CABLE IN CONDUIT, LEAD-IN, NO. 14, 1PR | 218 | FOOT POWER LEAD CABLE VIDEO NO. 12, 3/C |
| 3 | EACH TRAFFIC SIGNAL POST, GALVANIZED STEEL, 16 FT | 583 | FOOT ELECTRIC CABLE IN CONDUIT, GROUNDING, NO. 6 1C |
| 1 | EACH STEEL COMBINATION MAST ARM ASSEMBLY AND POLE 30 FT. | 466 | FOOT ELECTRIC CABLE IN CONDUIT, NO. 20 3C, TWISTED SHIELDED |
| 1 | EACH STEEL COMBINATION MAST ARM ASSEMBLY AND POLE 42 FT. | | |

| TRAFFIC SIGNAL INSTALLATION ELECTRICAL SERVICE REQUIREMENTS | | | | |
|---|-----------|---------|--------------|---------------|
| TYPE | NO. LAMPS | WATTAGE | % OPERATIONS | TOTAL WATTAGE |
| SIGNAL (RED) | 14 | 10 | 0.50 | 70.0 |
| (YELLOW) | 15 | 18 | 0.25 | 61.5 |
| (GREEN) | 15 | 14 | 0.25 | 52.5 |
| ARROW | 16 | 9 | 0.10 | 14.4 |
| PED. SIGNAL | 0 | 7 | 1.00 | 0.0 |
| CONTROLLER | 1 | 100 | 1.00 | 100.0 |
| ILLUM. SIGN | | | | |
| VIDEO SYSTEM | 1 | 150 | 1.00 | 150.0 |
| FLASHER LED | | | | 0.50 |
| TOTAL = | | | | 448.4 |

ENERGY COSTS - BILLED TO: Village of Montgomery
 (ADDRESS) 1300 S. Broadway
 Montgomery, IL 60538

ENERGY SUPPLY - CONTACT: Mr. Al Arends
 PHONE: (630) 691-4379
 COMPANY: Com Ed Customer Const. & Design

rjngroup
 Excellence through Ownership
 200 West Front Street
 Wheaton, IL 60187

| | |
|-------------------|-----------|
| DESIGNED - MK | REVISED - |
| DRAWN - DW | REVISED - |
| CHECKED - MH | REVISED - |
| DATE - 12/20/2010 | REVISED - |

KANE COUNTY
 DIVISION OF TRANSPORTATION
 ORCHARD ROAD RECONSTRUCTION

CABLE PLAN AND
 PHASE DESIGNATION DIAGRAM
 ORCHARD ROAD AND ROCHESTER DRIVE

SCALE: 1" = 20'
 SHEET NO. 13 OF 13 SHEETS STA. TO STA.

| F.A.P. RTE. | SECTION | COUNTY | TOTAL SHEETS | SHEET NO. |
|---------------------------|----------------|--------|--------------|--------------------|
| 336 | 99-00232-01-WR | KANE | 215 | 122 |
| | | | | CONTRACT NO. 63541 |
| ILLINOIS FED. AID PROJECT | | | | |

20.00000 / IN.
 12/17/2010
 R:\117726\CAD\Sheets\117726_cable.plt_RJK\117726_CAD\Sheets\117726_cable.plt_RJK.rchstr.dgn