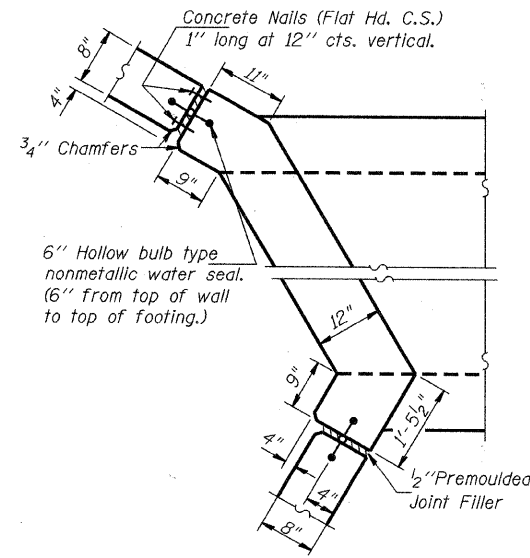
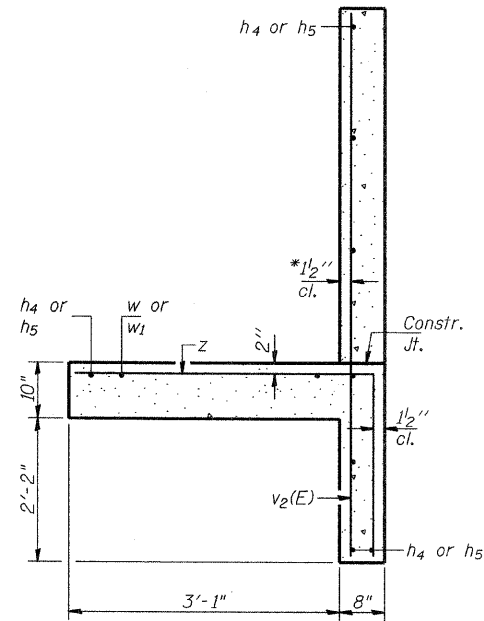


STATE OF ILLINOIS
DEPARTMENT OF TRANSPORTATION



CORNER DETAIL



SECTION B-B

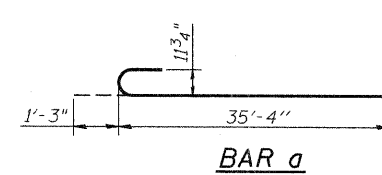
* v₂(E) bars shall not be placed more than 1/2" cl. from back face of wingwalls.

BILL OF MATERIAL

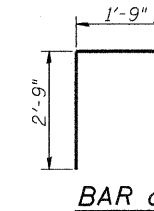
Bar	No.	Size	Length	Shape
a	1044	#9	36'-7"	C
a ₁	1044	#9	35'-4"	C
d	80	#4	4'-6"	J
h	648	#7	32'-4"	—
h ₁	648	#7	41'-2"	—
h ₂	16	#6	34'-2"	—
h ₃	16	#7	33'-9"	—
h ₄	20	#4	4'-6"	—
h ₅	20	#4	14'-6"	—
h ₆	72	#5	31'-9"	—
h ₇	72	#5	40'-6"	—
h ₈	8	#6	7'-0"	—
s	195	#4	5'-10"	□
s ₁	65	#4	5'-8"	□
v	1266	#6	6'-4"	—
v ₁	8	#5	8'-9"	—
v ₂ (E)	20	#5	15'-3"	—
w	10	#5	8'-4"	—
w ₁	10	#5	20'-2"	—
z	52	#4	6'-2"	J
Bar Splicers		Each	240	
Concrete Box Culverts		Cu. Yd.	1145.7	
Reinforcement Bars		Pound	373,870	
Reinforcement Bars, Epoxy Coated		Pound	320	

MIN. BAR LAPS

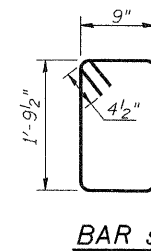
- #4 bar - 1'-4"
- #5 bar - 1'-8"
- #6 bar - 2'-0"
- #7 bar - 2'-9"
- #9 bar - 4'-7"



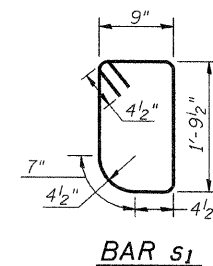
BAR a



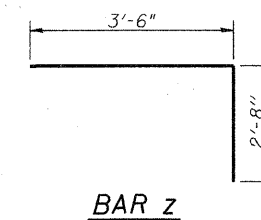
BAR d



BAR s



BAR s₁



BAR z

DESIGNED PRD
CHECKED AWW
DRAWN PRD
CHECKED AWW

WINGWALL DETAILS
STRUCTURE NO. 045-6400

rjngroup Excellence through Ownership 200 West Front Street Wheaton, IL 60187	SHEET NO. 7 9 SHEETS	F.A.P. RTE.	SECTION	COUNTY	TOTAL SHEETS	SHEET NO.
		336	99-00232-01-WR	Kane	215	145
		CONTRACT NO. 63541				
		FED. ROAD DIST. NO.	ILLINOIS	FED. AID PROJECT		