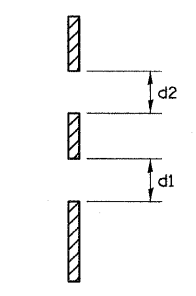


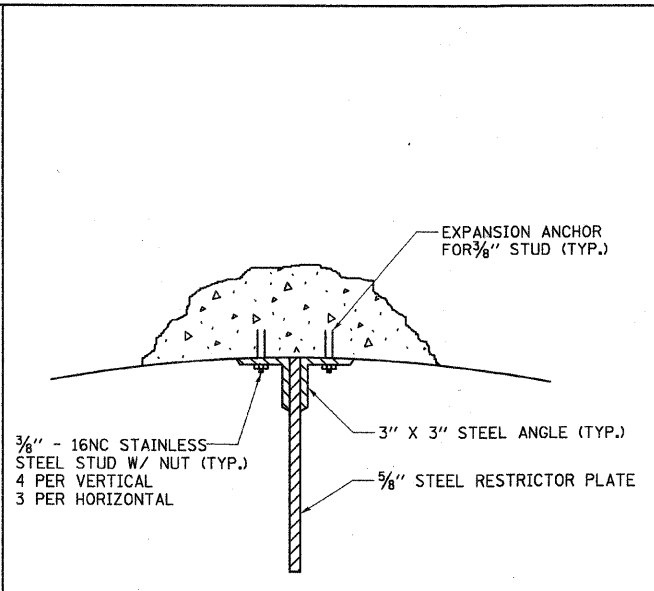
- TOTAL BOLTS REQUIRED: 22
- NOTE:
- ANGLES SHOULD BE 3" X 3" X 3/8"
  - VERTICAL ANGLES SHOULD EXTEND FROM THE BOTTOM OF THE RESTRICTOR PLATE TO THE TOP.
  - HORIZONTAL ANGLES SHOULD EXTEND FROM VERTICAL ANGLE TO VERTICAL ANGLE.



ORIFICE DETAIL

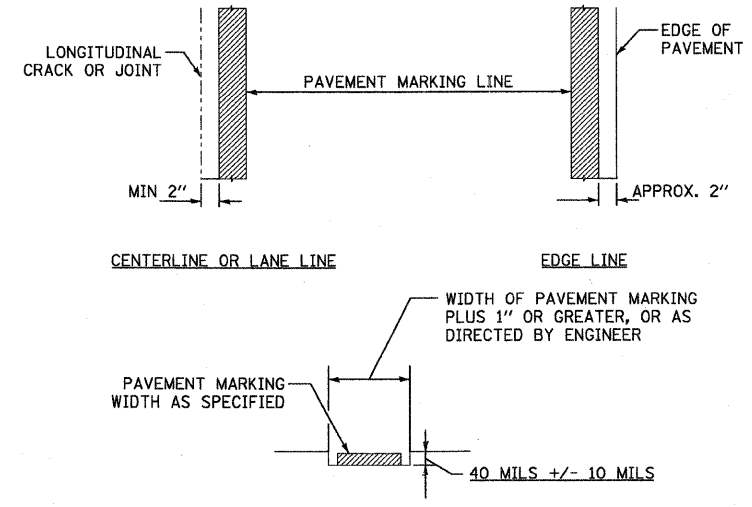
STEEL ANGLE BOLTING DETAILS

BASIN LOCATION	MANHOLE DIAMETER	FRAME AND GRATE	LOWER ORIFICE DIA. d1 (INCHES)	UPPER ORIFICE DIA. d2 (INCHES)	INVERT OF LOWER ORIFICE	INVERT OF UPPER ORIFICE	ELEVATION OF TOP OF PLATE OVERFLOW
ROUTE 30	5'	TY 1 - OL	3.3	6.6	658.50	661.24	662.82
COUNTRYSIDE	5'	TY 1 - OL	3.0	3.5	656.50	658.00	661.50
JERICHO	5'	TY 1 - OL	4.9	10.2	659.50	662.35	664.00



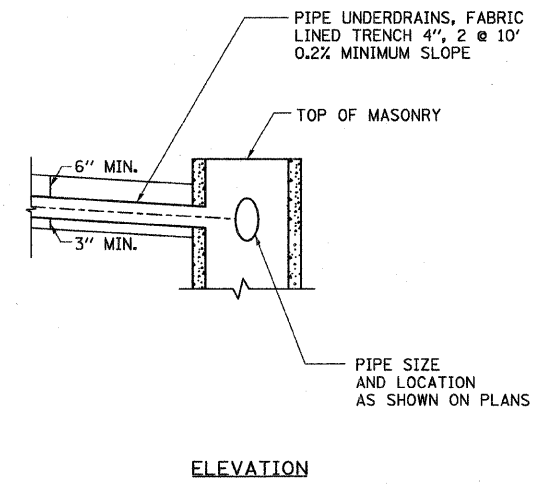
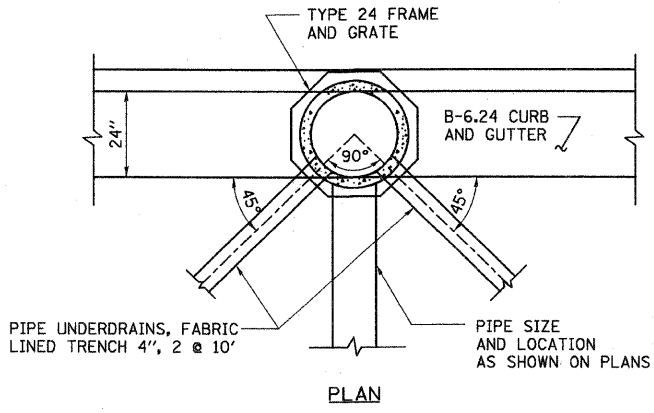
- NOTE:
- ALL STEEL ANGLES AND PLATES TO BE GALVANIZED AFTER FABRICATION.
  - ALL RESTRICTOR PLATES, ANGLES AND HARDWARE TO BE INCLUDED IN THE COST OF THE MANHOLE.
  - BASIS OF PAYMENT: "MANHOLES, TYPE A, 6 FT. DIAMETER, TYPE 1 FRAME, CLOSED LID, RESTRICTOR PLATE" EACH

ANGLE FASTENER DETAIL



- GENERAL NOTES:
- UNLESS OTHERWISE ALLOWED BY THE ENGINEER, WAIT 10 DAYS OR LONGER TO GRIND A GROOVE INTO NEW ASPHALT PAVEMENT TO AVOID DAMAGE TO THE NEW PAVEMENT BY THE GROOVING AND CLEANING OPERATION.
  - PAVEMENT MARKINGS SHALL CONFORM WITH IDOT HIGHWAY STANDARD 780001-01 (OR LATEST) UNLESS OTHERWISE DIRECTED BY THE ENGINEER OR DETAILS ON THE SHEET.

STIPING GROOVE INSTALLATION



UNDERDRAIN DETAIL

43.9999 / IN. dwg 12/17/2010 C:\Users\jrb\Documents\177782.Dwg