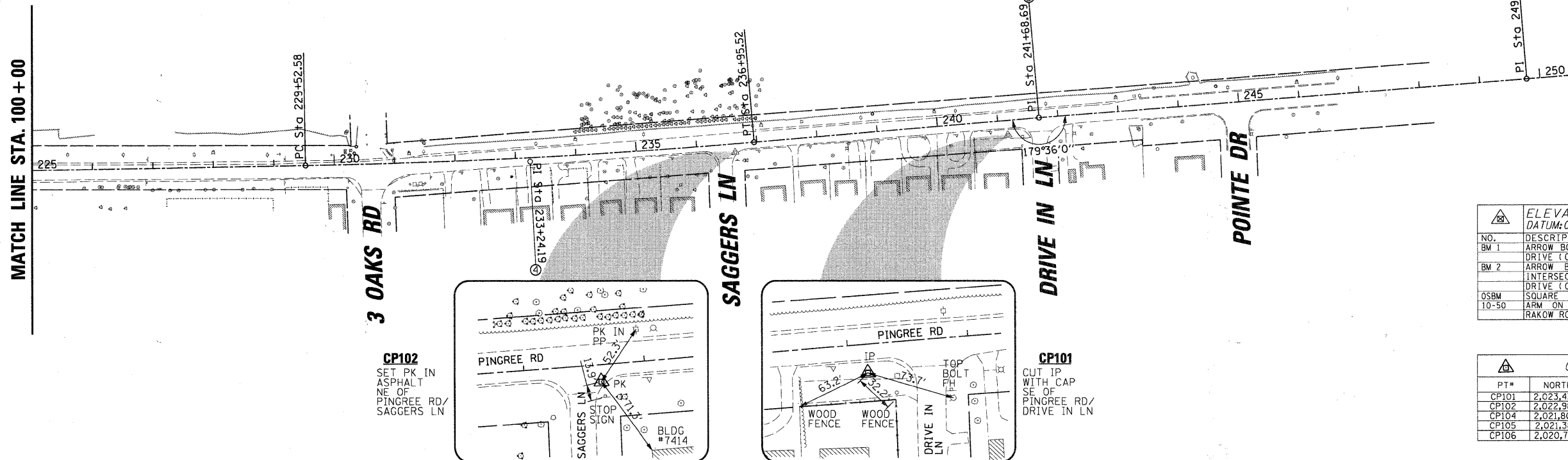


PROP. CURVE PR. PING-1
 PI STA. = 233+24.19
 $\Delta = 3^\circ 52' 11''$ (LT)
 $D = 0^\circ 31' 15''$
 $R = 11,000.00'$
 $T = 371.61'$
 $L = 742.94'$
 $E = 6.28'$
 P.C. STA = 229+52.58
 P.T. STA = 236+95.52

ALIGNMENT			
	NORTHING (Y)	EASTING (X)	STATION
○	2,020,036.75	994,299.74	207+12.04
○	2,020,746.23	994,332.81	214+22.29
○	2,021,422.15	994,358.14	220+98.69
○	2,022,647.41	994,382.67	233+24.19
○	2,023,491.23	994,342.53	241+68.69
○	2,024,299.86	994,309.73	249+77.98



ELEVATION BENCHMARKS DATUM: CIORBA GROUP, INC. DATUM		
NO.	DESCRIPTION	ELEV.
BM 1	ARROW BOLT OF HYDRANT AT #735 MCGARDLE DRIVE (CIORBA GROUP, INC.)	884.83
BM 2	ARROW BOLT OF HYDRANT AT NORTHEAST INTERSECTION OF PINGREE ROAD & MCGARDLE DRIVE (CIORBA GROUP, INC.)	886.44
OSBM 10-50	SQUARE CUT ON CONCRETE BASE OF MAST ARM ON NORTHEAST CORNER OF JAMES R RAKOW ROAD & PINGREE ROAD	881.88

CONTROL POINTS			
PT#	NORTHING (Y)	EASTING (X)	DESCRIPTION
CP101	2,023,438.8700	994,369.2100	IP WITH CAP
CP102	2,022,986.8900	994,380.7900	PK NAIL
CP104	2,021,808.4000	994,368.6200	IP WITH CAP
CP105	2,021,384.1500	994,378.9500	CUT "X"
CP106	2,020,788.1300	994,356.8600	CUT "X"

FILE NAME = N:\CRYSTALLAKE\100316\Civil\10N\100316.dwg
 USER NAME = CMCCOLLD
 PLOT SCALE = 1/8" = 1'
 PLOT DATE = 12/23/2010

DESIGNED - PMM
 DRAWN - PMM
 CHECKED - BDC
 DATE -

REVISED -
 REVISED -
 REVISED -
 REVISED -

STATE OF ILLINOIS
 DEPARTMENT OF TRANSPORTATION

BENCHMARK, TIES AND ALIGNMENT
 PINGREE ROAD

SCALE: 100' SHEET NO. 1 OF 1 SHEETS STA. 204+00 TO STA. 247+00

F.A.U. RTE.	SECTION	COUNTY	TOTAL SHEETS	SHEET NO.
126	08-00107-00-FP	MCHENRY	50	6

CONTRACT NO. [ILLINOIS] FED. AID PROJECT