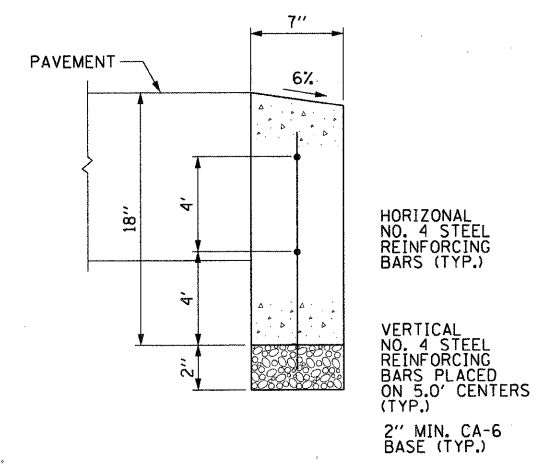
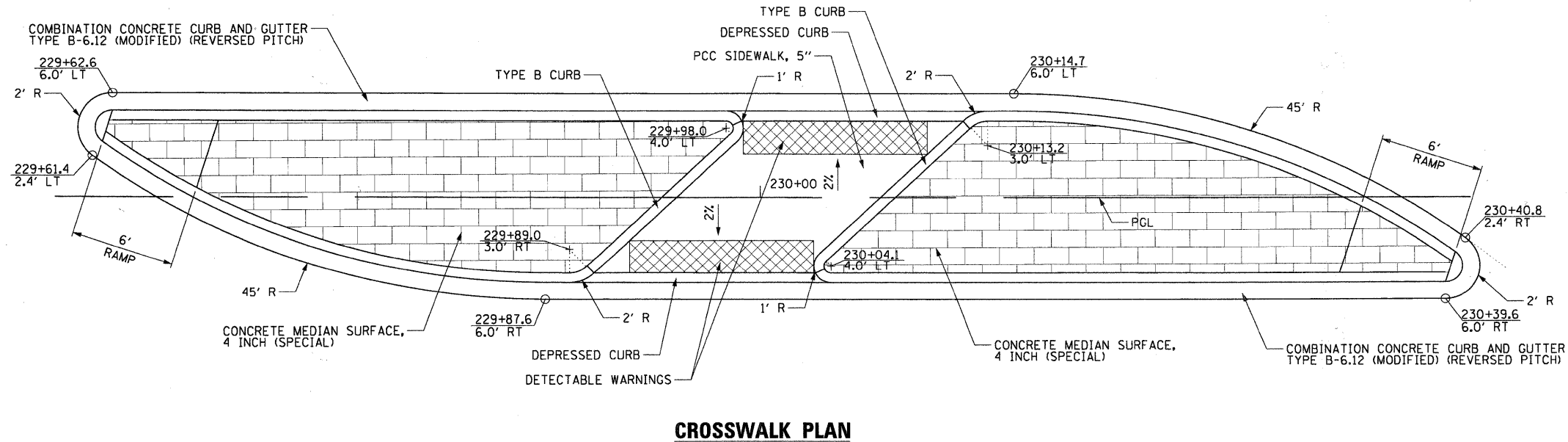
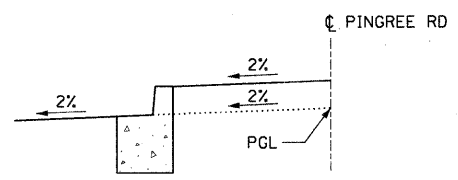


- NOTES:**
1. Contraction joints and expansion joints shall be installed in the curb or curb and gutter in prolongation with joints in adjacent P.C.C. Pavement or Base Course.
 2. When curb and gutter is constructed adjacent to flexible pavement, A 1" thick preformed expansion joint filler, conforming to the cross section of the curb and gutter, shall be installed at points of curvature for short-radius curves and construction joints shall be placed between expansion joints at distances not to exceed 20 feet.
 3. All expansion joints shall be installed with a 1" diameter x 18" coated smooth dowel bar conforming to art. 1006.11 of the IDOT standard specifications. The dowel bar shall be fitted with a cap having a pinched stop that will provide 1" of expansion.
 4. All construction joints shall be provided with 5/8" diameter bar conforming to ASTM M-31 or M-53. Tie bars shall be placed on 9" centers (minimum 2 per joint).
 5. Transitions-the transitions from full height curb to depressed curb shall be made at the rate of 3" per foot of length or flatter.
 6. Expansion joints shall be placed at intervals not to exceed 100 feet.



BARS TO BE SET AND TIED PRIOR TO CONCRETE POUR. BAR PLACEMENT DURING POUR WILL NOT BE PERMITTED.

CONCRETE CURB (SPECIAL)



FILE NAME =	USER NAME = CMCCOLLO	DESIGNED - MCW	REVISED -	STATE OF ILLINOIS DEPARTMENT OF TRANSPORTATION	CONSTRUCTION DETAILS PINGREE ROAD		F.A.U. RTE. 126	SECTION 08-00107-00-FP	COUNTY MCHENRY	TOTAL SHEETS 50	SHEET NO. 23	
N:\CRYSTALLAKE\100316\Civil\DET01\100316.dwt		DRAWN - PMM	REVISED -		SCALE:	SHEET NO. 1 OF 7 SHEETS	STA. TO STA.	CONTRACT NO. [ILLINOIS] FED. AID PROJECT				
		CHECKED - MCW	REVISED -									
		DATE - 12/23/2012	REVISED -									