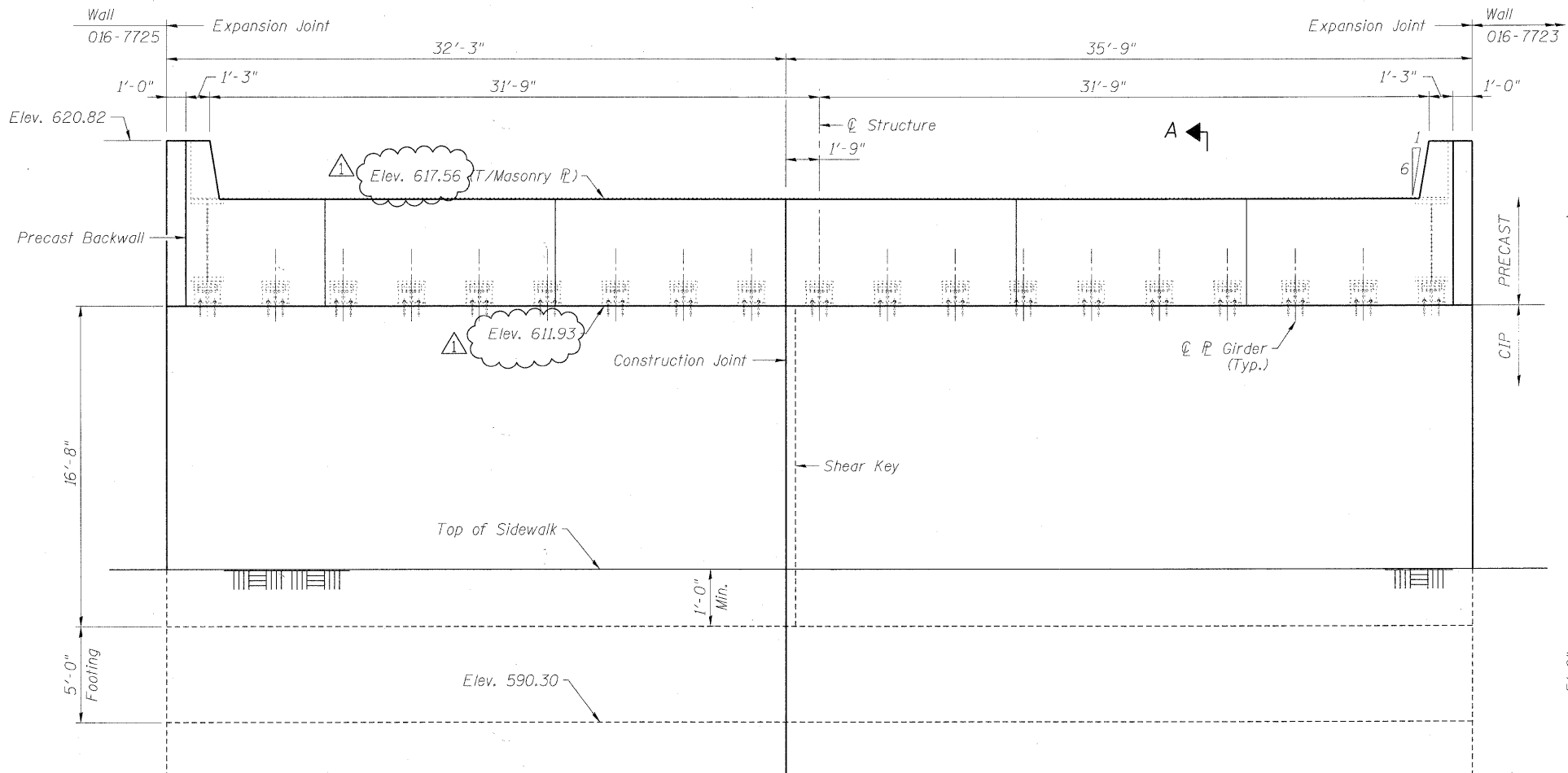
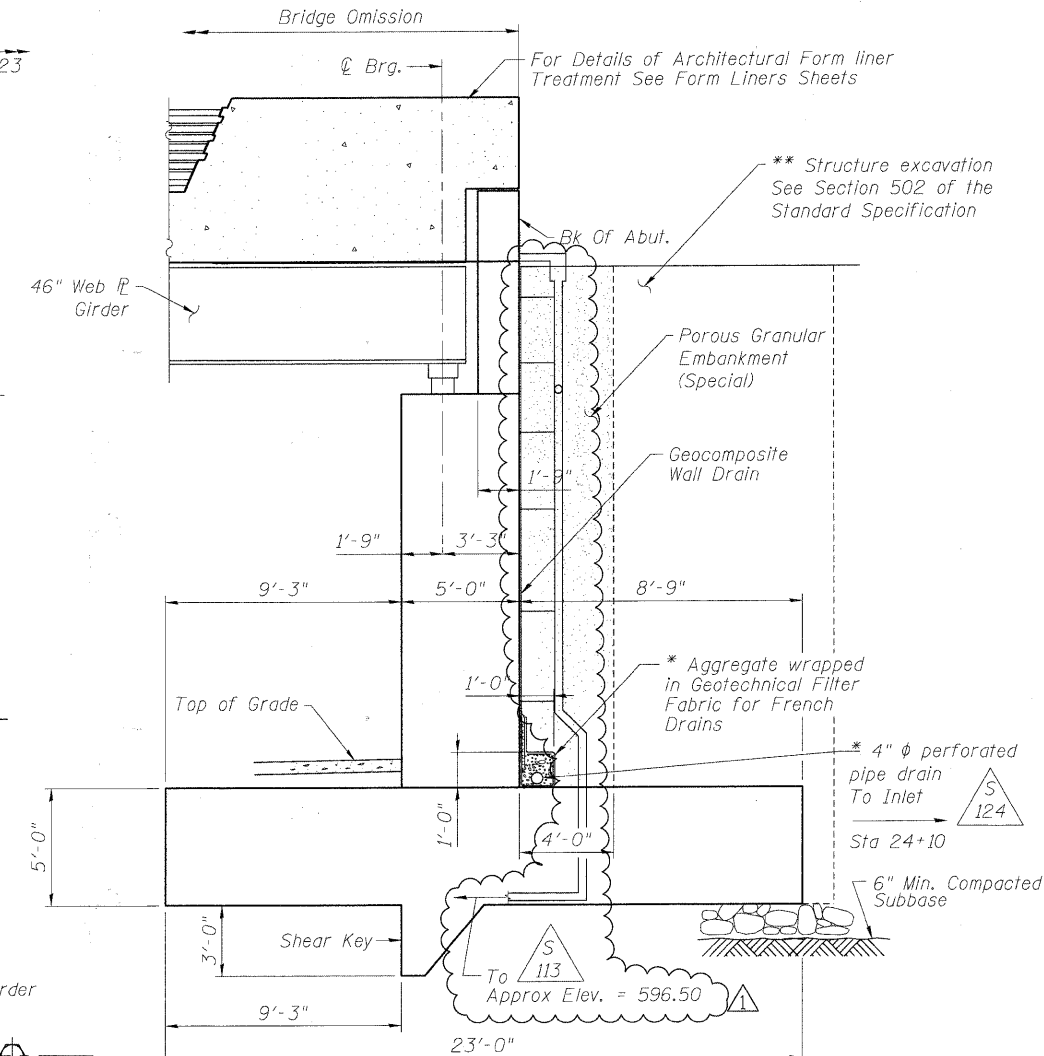


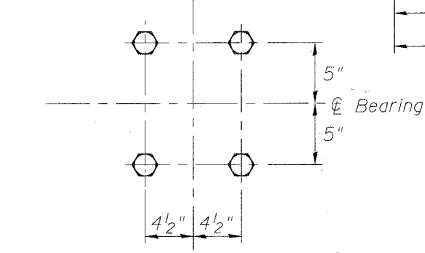
TOP PLAN



SOUTH ABUTMENT ELEVATION



SECTION A-A



ANCHOR BOLT LAYOUT

- Notes:
1. For Form Liner Rustification Details, See Architectural Sheets.
  2. For Bar Splicer Details, See Sheet No. 9 of 65.
  3. For Precast Backwall Details, See Sheet No. 8 of 65.
  4. For Steel Masonry Plate Details, See Sheet No. 8 of 65.
  5. Provide 3" x 1'-6" shear key at abutment stem construction joint.
  6. Roughen surfaces of horizontal construction joints (typ.).
  7. Pipe Underdrain to connect to Catch Basin. See Drainage Drawings.

\*Included in cost of "Pipe Underdrains for Structures"

\*\* Backfill remainder of structure excavation and overexcavation with same material specified for roadway embankment

FILE NAME = P:\6215877\002\_CAD\001\_Drawing\Sheet\Structure\016-7721\_001.dwg; 5-Abutment.dwg

	USER NAME = floresg	DESIGNED - BMR	REVISED - 4/14/11 ADDENDUM A	<b>STATE OF ILLINOIS</b> <b>DEPARTMENT OF TRANSPORTATION</b>	<b>SOUTH ABUTMENT</b> <b>STRUCTURE NO. 016-7721</b>		F.A.U. RTE.	SECTION	COUNTY	TOTAL SHEETS	SHEET NO.
	PLOT SCALE = 8:1' / 1/4"	DRAWN - COM	REVISED -				1537	06-00050-00-G5	COOK	209	98
PLOT DATE = 4/12/2011	CHECKED - DD	REVISED -			SCALE: NONE SHEET NO. 4 OF 65 SHEETS STA. TO STA.		CONTRACT NO. 63556				
DATE - 11/23/2010	REVISED -				FED. ROAD DIST. NO. 1 ILLINOIS FED. AID PROJECT CRE-9003(709)						