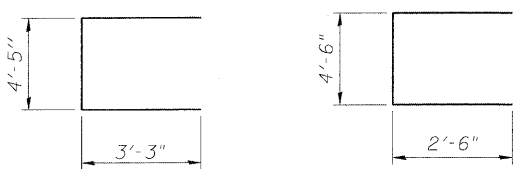


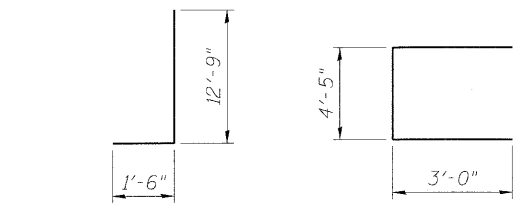
BILL OF MATERIAL

Bar	No.	Size	Length	Shape
n(E)	36	#6	32'-0"	—
n ₁ (E)	36	#6	35'-6"	—
n(E)	137	#7	14'-3"	—
n ₁ (E)	137	#11	14'-3"	—
s(E)	137	#6	10'-11"	—
s ₁ (E)	322	#5	9'-6"	—
s ₂ (E)	36	#6	10'-5"	—
t(E)	137	#8	22'-6"	—
t ₁ (E)	137	#10	22'-6"	—
v(E)	137	#5	16'-6"	—
v ₁ (E)	137	#7	16'-6"	—
w(E)	48	#7	32'-0"	—
w ₁ (E)	48	#7	35'-6"	—
w ₂ (E)	6	#5	32'-0"	—
w ₃ (E)	6	#5	35'-6"	—
Structure Excavation		Cu. Yd.	727.9	
Concrete Structures		Cu. Yd.	525.9	
Reinforcement Bars, Epoxy Coated		Pound	64,980	
Geocomposite Wall Drain		Sq. Yd.	166	
Bar Splicers		Each	90	

For details of Bar Splicers, See Sheet 9 of 61



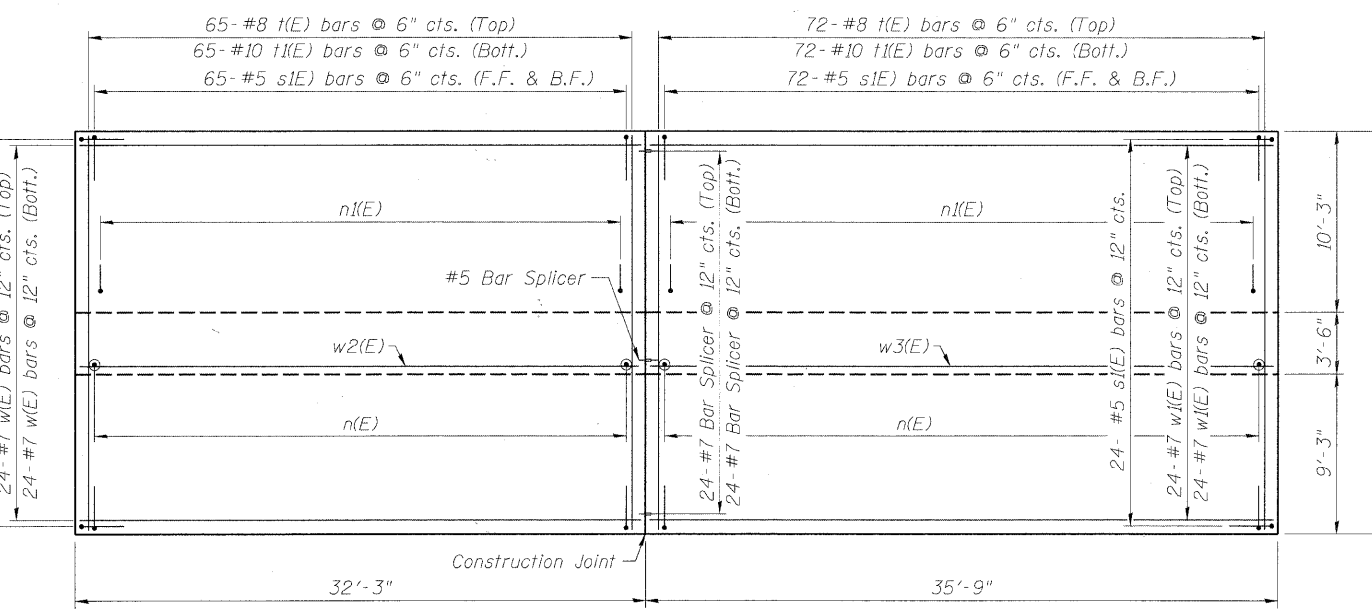
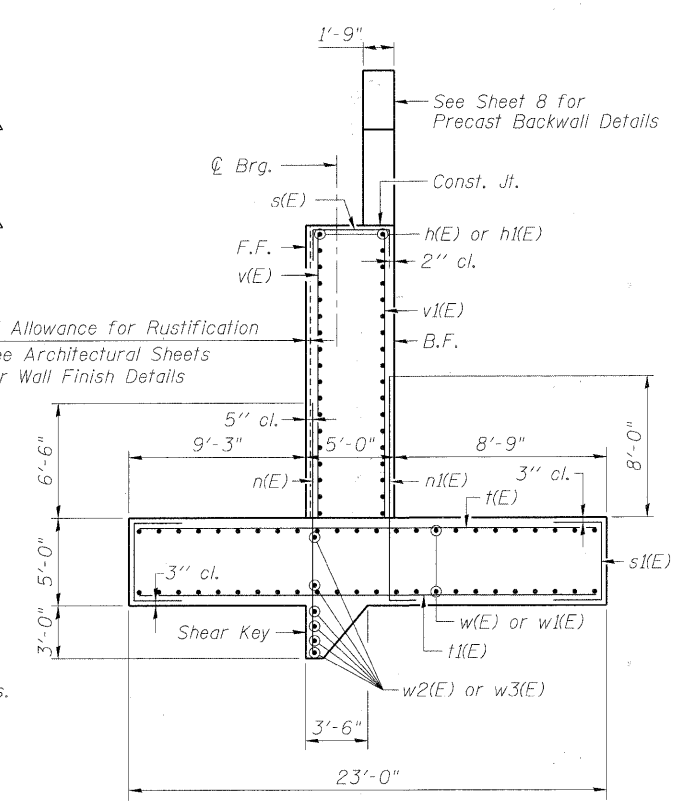
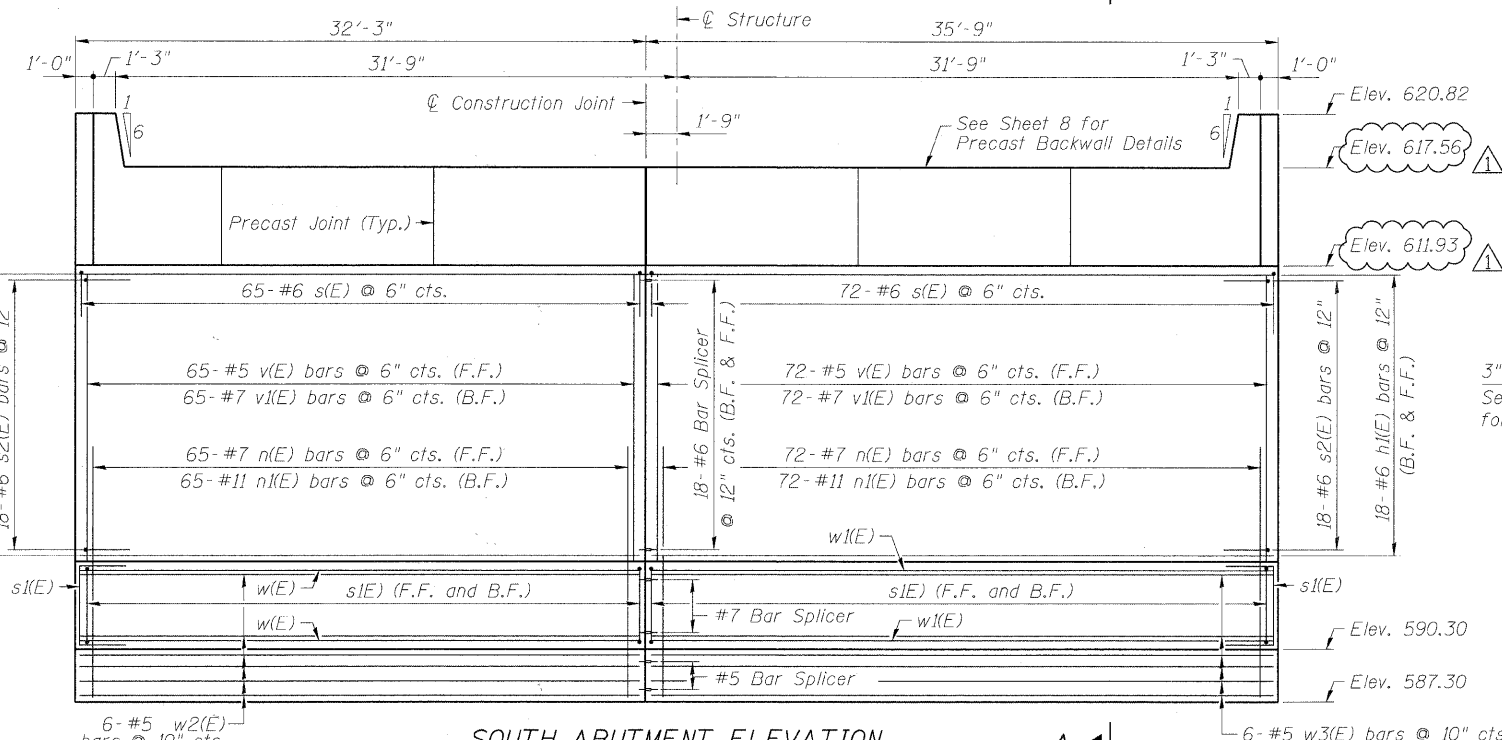
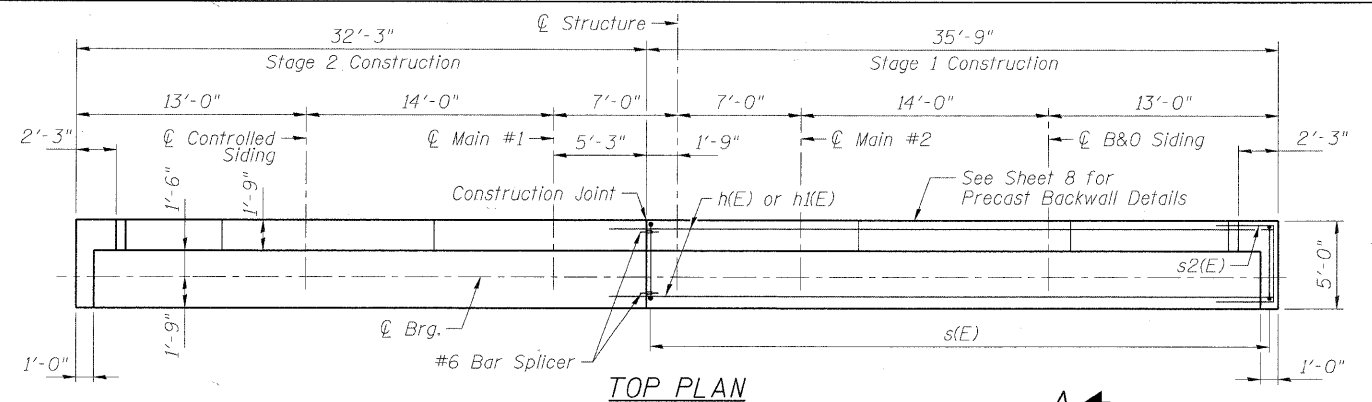
BAR s(E) BARS s₁(E)



BAR n₁(E) BARS s₂(E)

Notes:
 F.F. = Front Face
 B.F. = Back Face
 Bott. = Bottom

NOTE:
 1. Contractor to submit revised reinforcement plans for review if staging requirements require revised reinforcement. Minimum development lengths as listed in sheet 2 of 65 shall be provided.
 2. Work this sheet with Sheet 8 of 65.



FILE NAME = P:\AECOM\5877\0600 CAD\001_Drawing\Shasta\Structure\016-7721_1001_11105_5-Abutment-Des.dgn

STATE OF ILLINOIS
 DEPARTMENT OF TRANSPORTATION