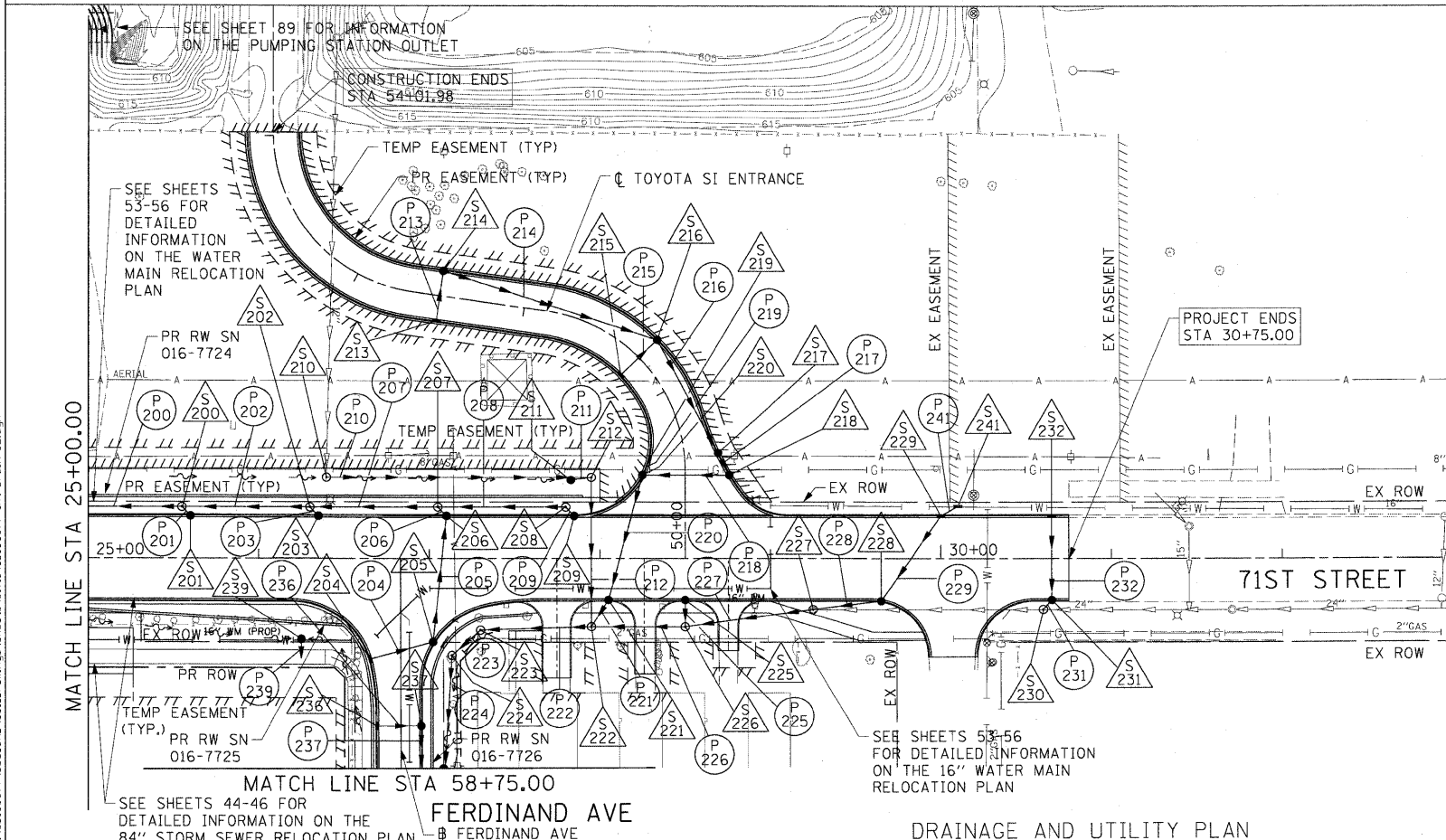
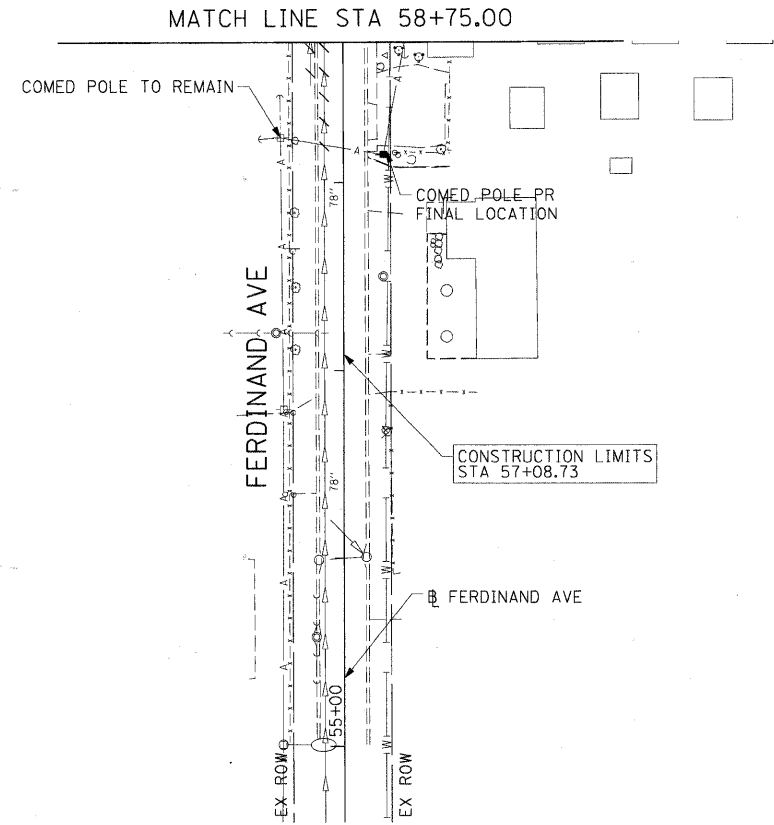
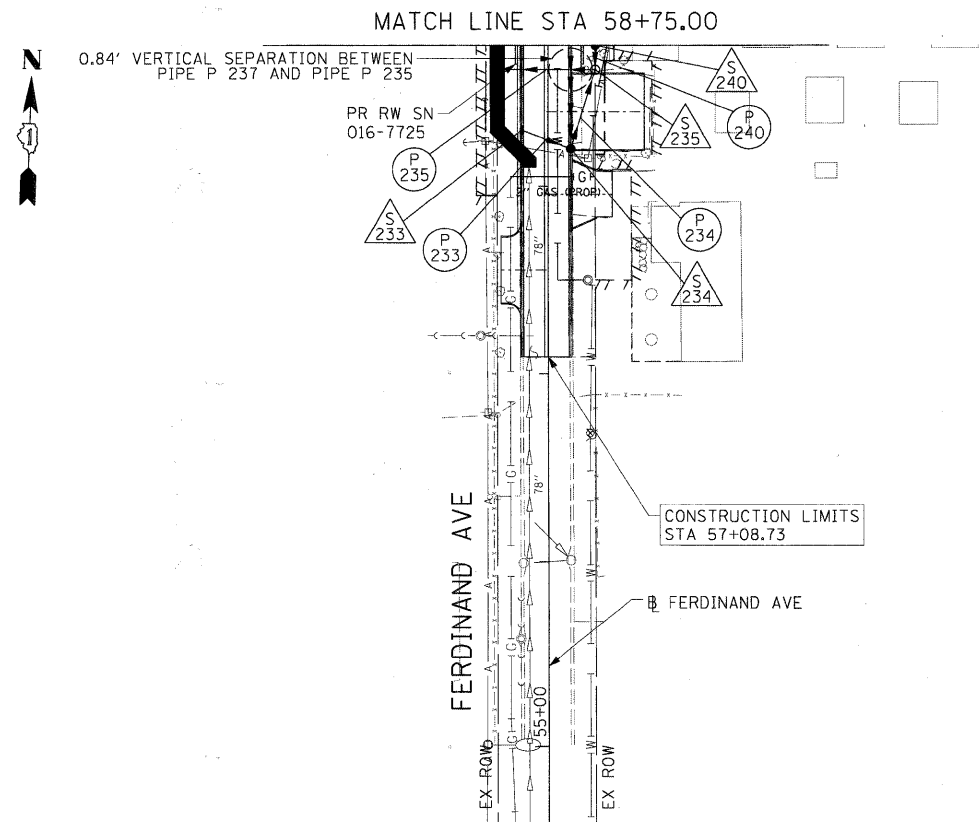


EXISTING CONDITIONS AND REMOVAL



DRAINAGE AND UTILITY PLAN



FILE NAME = F:\8015877\028\_CAD\001\_Drains\Shops\Civil\6215877\prt-D.ram-82.dgn



USER NAME = whalant	DESIGNED - KLK	REVISED -
PLOT SCALE = 50.000' / 1"	DRAWN - KLK	REVISED -
PLOT DATE = 3/16/2011	CHECKED - EKY	REVISED -
	DATE - March 17, 2011	REVISED -

STATE OF ILLINOIS  
DEPARTMENT OF TRANSPORTATION

DRAINAGE AND UTILITY PLAN		
SCALE: 1"=50'	SHEET NO. 2 OF 3 SHEETS	STA 25+00.00 TO STA 30+75.00

F.A.U. RTE.	SECTION	COUNTY	TOTAL SHEETS	SHEET NO.
1537	06-00050-00-GS	COOK	209	48
CONTRACT NO. 63556			FED. ROAD DIST. NO. 1 ILLINOIS FED. AID PROJECT CRE-90031099	