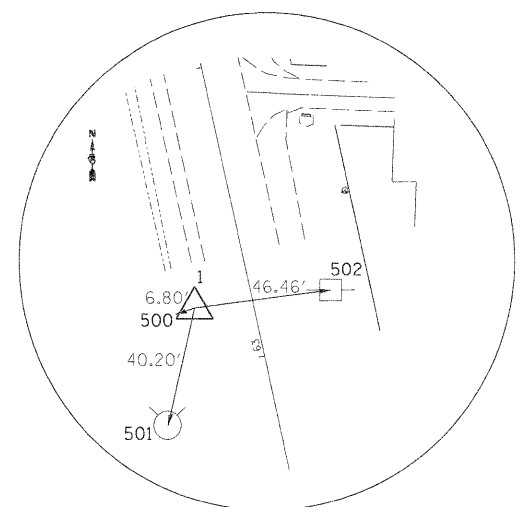
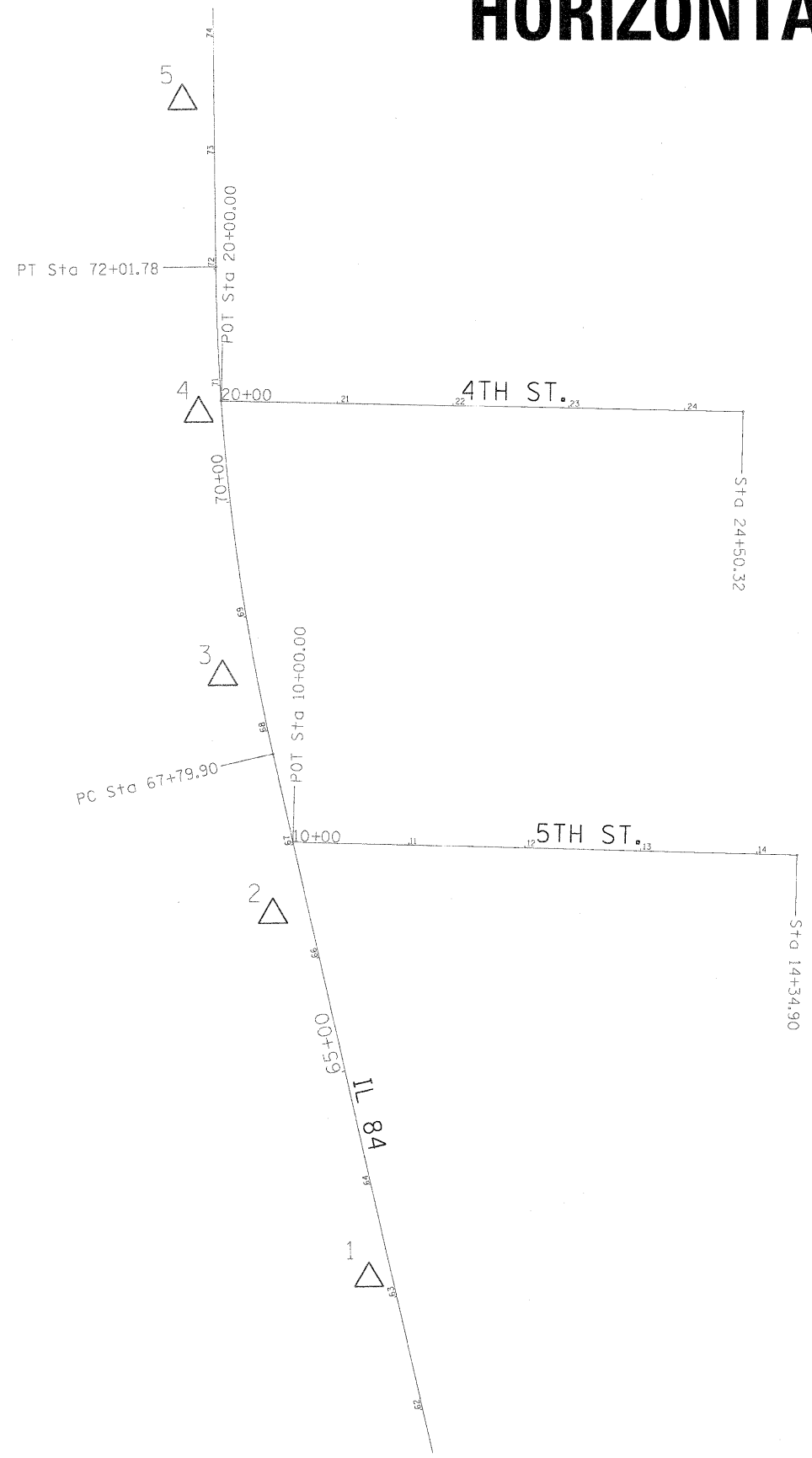
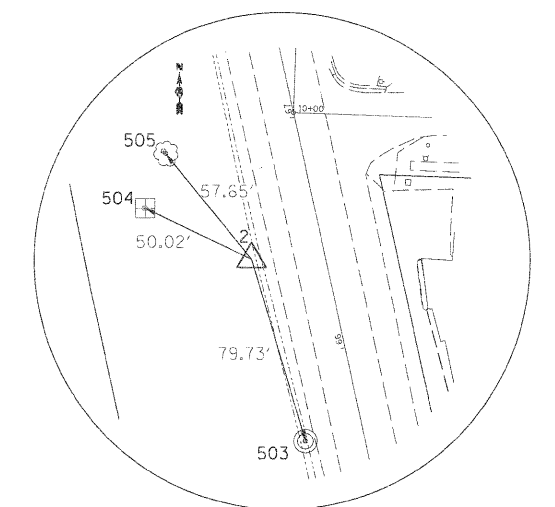


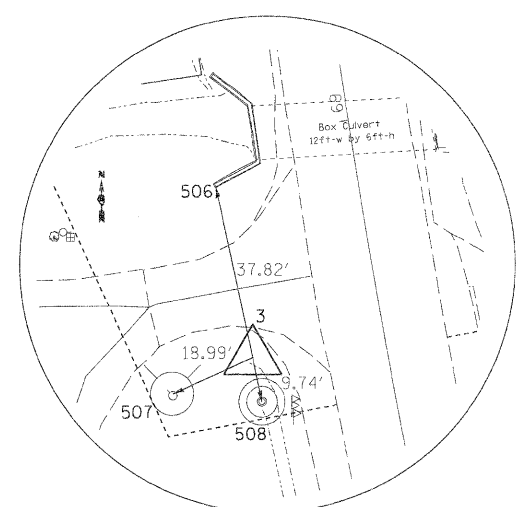
HORIZONTAL & VERTICAL CONTROL



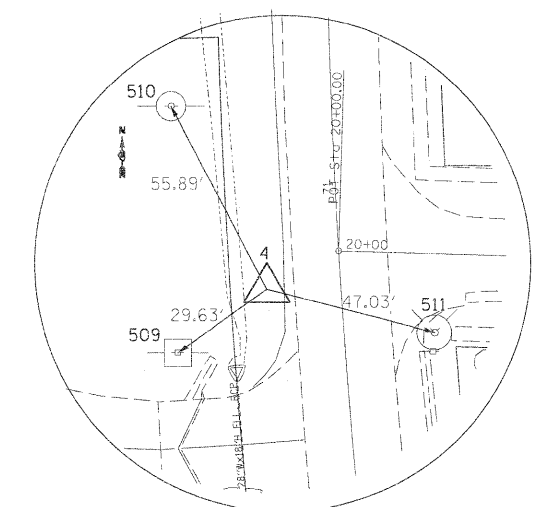
HORIZONTAL CONTROL POINT 1



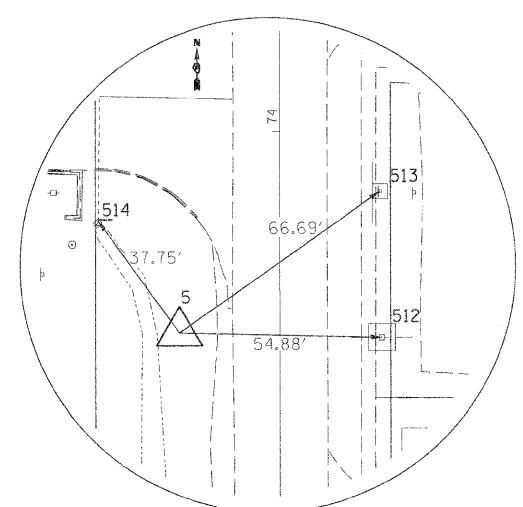
HORIZONTAL CONTROL POINT 2



HORIZONTAL CONTROL POINT 3



HORIZONTAL CONTROL POINT 4



HORIZONTAL CONTROL POINT 5

Curve Data

Curve 250
 P.I. Station 69+91.6558 N 1,757,760.0823 E 2,235,299.7178
 Delta = 12° 17' 50.7463" (RT)
 Degree = 2° 54' 53.7421"
 Tangent = 211.7523'
 Length = 421.8776'
 Radius = 1,965.5982'
 External = 11.3730'
 Long Chord = 421.0683'
 Mid. Ord. = 11.3076'
 P.C. Station 67+79.9034 N 1,757,553.2168 E 2,235,344.9474
 P.T. Station 72+01.7810 N 1,757,971.8345 E 2,235,299.5855
 C.C. N 1,757,973.0625 E 2,237,265.1833

Course from PT 250 to PC 260 359° 57' 51.1422" Dist 866.1301'

DRAWING NTS

FILE NAME =	USER NAME = cushmanbw	DESIGNED -	REVISED -	STATE OF ILLINOIS DEPARTMENT OF TRANSPORTATION	HORIZONTAL & VERTICAL CONTROL	F.A.U. RTE.	SECTION	COUNTY	TOTAL SHEETS	SHEET NO.
ca:\pwork\pwork\dot\cushmanbw\d0133431\0204\04-08-sh-t-ATB.dgn	DRAWN -	REVISED -	5857			IR-T	ROCK ISLAND	25	10	
PLOT SCALE = 50.0000' / IN.	CHECKED -	REVISED -	CONTRACT NO. 64E31							
PLOT DATE = Wed Oct 06 08:07:47 2010	DATE -	REVISED -	ILLINOIS FED. AID PROJECT							
				SCALE:	SHEET NO. OF SHEETS	STA. TO STA.				