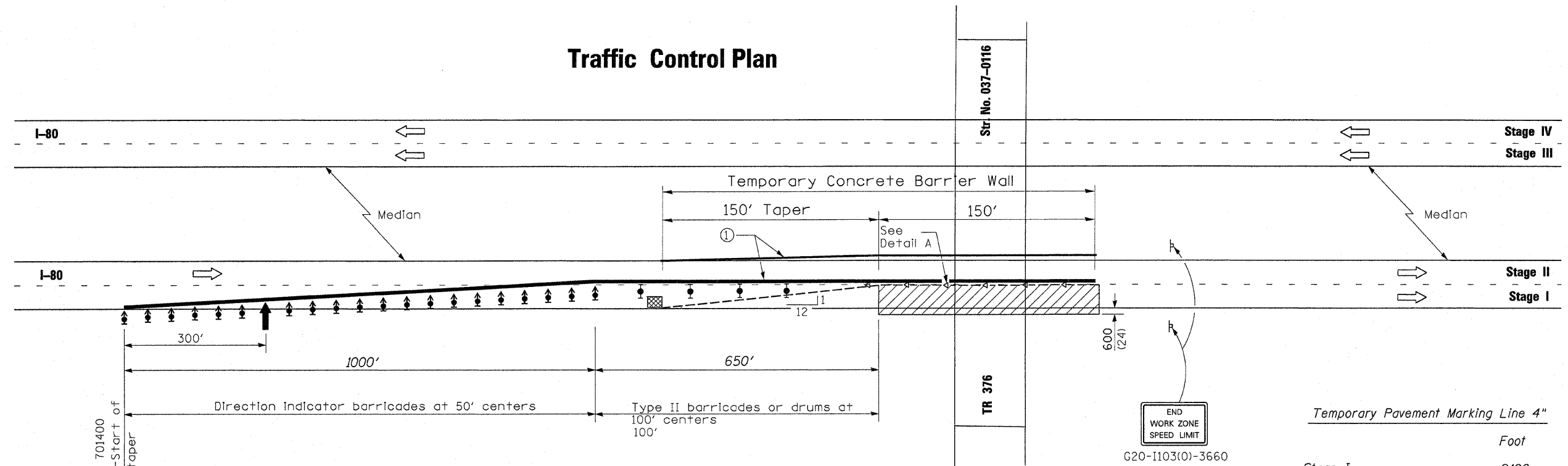


Traffic Control Plan



See Standard 701400 for approach-start of lane closure taper

Pavement Marking Removal

Stage I	100
Stage II	100
Stage III	100
Stage IV	100
Total	400 Sq Ft

Temporary Concrete Barrier

Stage I	300 Feet
Total	300 Feet

Relocate Temporary Concrete Barrier

Stage II	300
Stage III	300
Stage IV	300
Total	900

Impact Attenuators, Temporary

Stage I	1 Each
Total	1 Each

Impact Attenuators, Relocate

Stage II	1
Stage III	1
Stage IV	1
Total	3 Each

Temporary Pavement Marking Line 4"

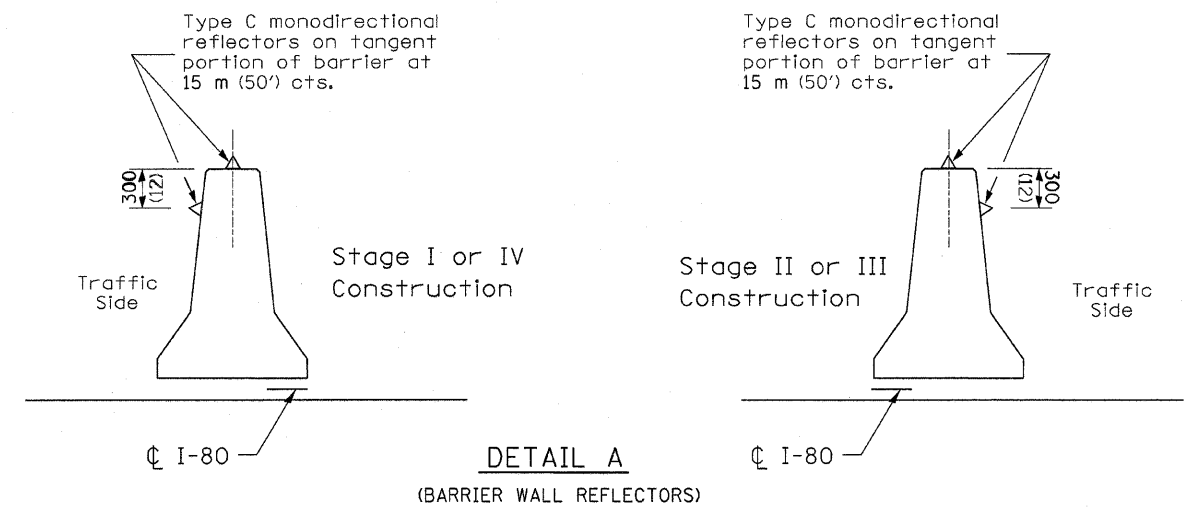
Stage I	2100
Stage II	2100
Stage III	2100
Stage IV	2100
Total	8400 Foot

Workzone Pavement Marking Removal

Stage I	700
Stage II	700
Stage III	700
Stage IV	700
Total	2800 Sq Ft

Short-term pavement marking

Project	48
Total	48 Feet



- SYMBOLS**
- ↑ Arrow board
 - ▨ Work area
 - ⊥ Sign
 - ⬆ Direction indicator barricade with steady burn monodirectional light
 - ⬇ Type II barricade or drum with steady burn monodirectional light
 - - - - Temporary concrete barrier
 - ◁ Type C Monodirectional reflector
 - ▣ Impact attenuator

① Temporary pavement marking shall be placed throughout the taper and along-side the work area. The edge line shall be white for right lane closure and yellow for left lane closures.

All dimensions are in millimeters (inches) unless otherwise shown.

*Traffic Control Plan
TR 376 over I-80
Various Routes Section D2 Bridge Painting 2011-2
Various Counties
Structure No. 037-0116*

FILE NAME =	USER NAME = linkdj	DESIGNED -	REVISED -	STATE OF ILLINOIS DEPARTMENT OF TRANSPORTATION	Traffic Control Plan Structure 037-0116	F.A. RTE.	SECTION	COUNTY	TOTAL SHEETS	SHEET NO.	
0:\BR\Bridge Painting\Contracts\PAINTING	54088\PLAN\dgn	DRAWN -	REVISED -			var	D2 Bridge Painting 2011-2	Various	25	5	
	PLOT SCALE = 50.0000' / IN.	CHECKED -	REVISED -			CONTRACT NO. 64088					
	PLOT DATE = Sat Jan 22 07:11:47 2011	DATE -	REVISED -			ILLINOIS FED. AID PROJECT					