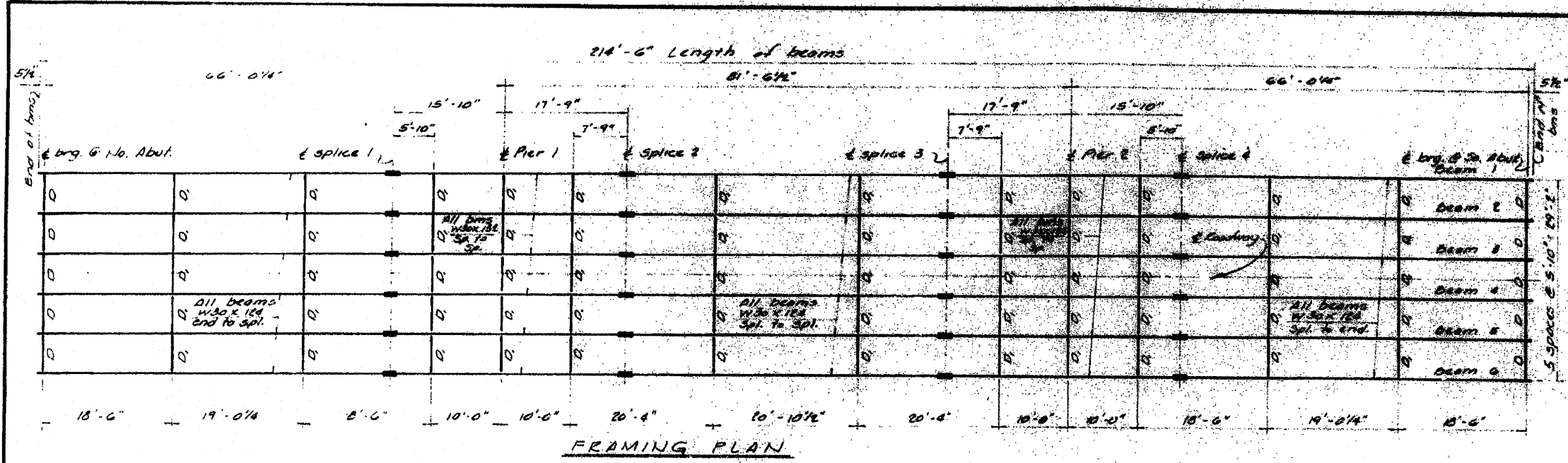
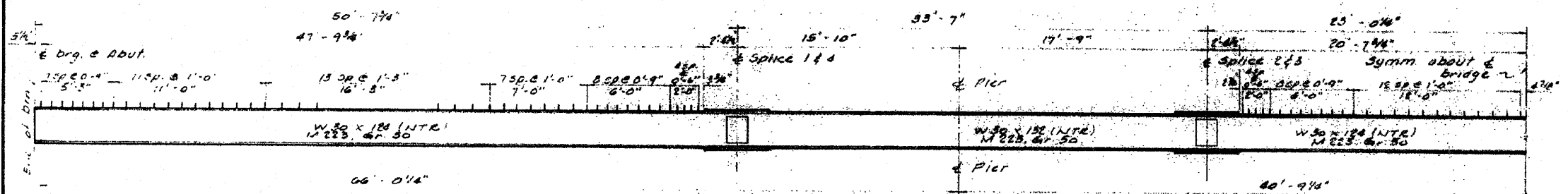


Route	Section	County	Sheet No.
PA 634	02	HENRY	29
Sheet 29 of 29			



FRAMING PLAN



HALF-ELEVATION
NTE stands for Notch Toughness Requirements

SECTION A-A

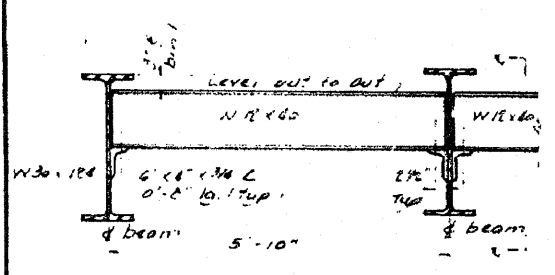
STUD SPACING

STUD SHEAR CONNECTOR

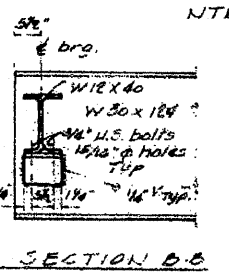
PLAN

SECTION A-A

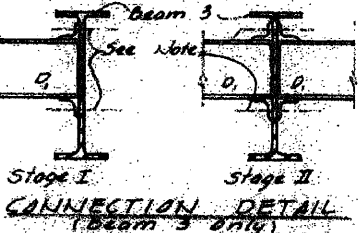
Note: See Br. Sht. No. 81 for determining fillet height "L".



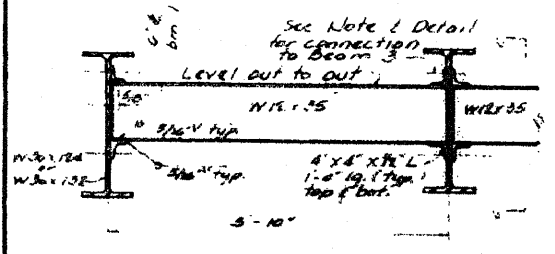
DIAPHRAM "D"
(10 required)



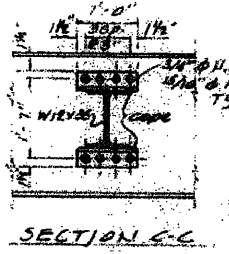
SECTION B-B



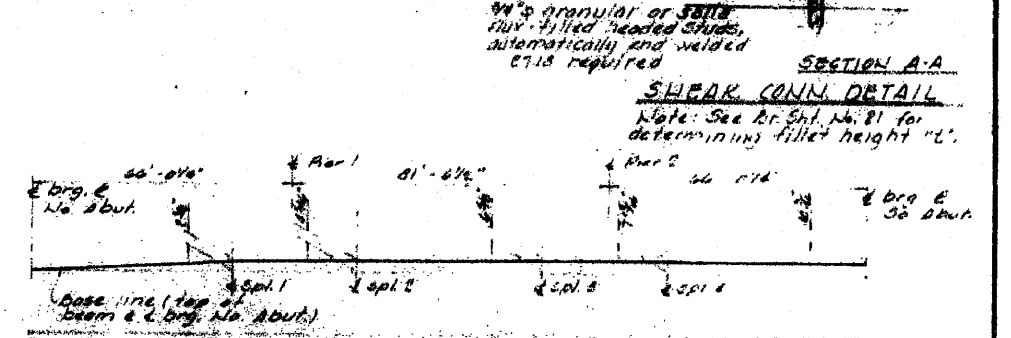
CONNECTION DETAIL
(Beam 3 only)



DIAPHRAM "D"
(6 required)



SECTION C-C



TOP OF BEAM ELEVATIONS (for fabrication only)

Beam	1st Splice	2nd Splice	3rd Splice	4th Splice	5th Splice	6th Splice	7th Splice	8th Splice	9th Splice	10th Splice
BEAMS 1 & 2	785.25	785.45	785.65	785.85	786.05	786.25	786.45	786.65	786.85	787.05
BEAMS 3 & 4	785.35	785.55	785.75	785.95	786.15	786.35	786.55	786.75	786.95	787.15
BEAMS 5 & 6	785.45	785.65	785.85	786.05	786.25	786.45	786.65	786.85	787.05	787.25

NOTE: BEAMS ARE W30 x 124
DIAPHRAGMS ARE W12

FOR INFORMATION ONLY

FRAMING PLAN

PROJECT

RTE PA 634 (IL 02)

SECTION 02 BR over South Branch of Edwards River

COUNTY HENRY

FILE NAME =	USER NAME = linkdj	DESIGNED -	REVISED -	STATE OF ILLINOIS	Existing Bridge Plans	F.A. RTE.	SECTION	COUNTY	TOTAL SHEETS	SHEET NO.
0:\BR\Bridge Painting\Contracts\PAINTING	64GB8\PLAN.dgn	DRAWN -	REVISED -	DEPARTMENT OF TRANSPORTATION	Structure No. 037-0138	var	02 Bridge Painting 2011-2	various	25	15
PLOT SCALE = 50.00000' / IN.	CHECKED -	REVISED -	REVISED -							
PLOT DATE = Sat Jan 22 07:18:30 2011	DATE -	REVISED -	REVISED -			SCALE:	SHEET NO. OF SHEETS	STA. TO STA.	CONTRACT NO. 64GB8	
									ILLINOIS FED. AID PROJECT	