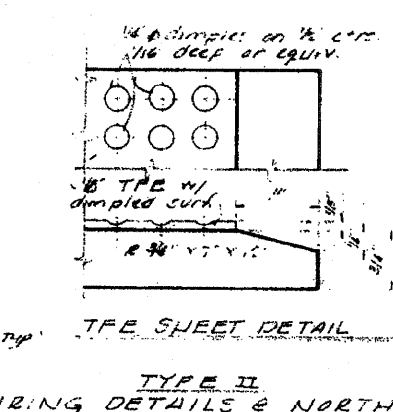
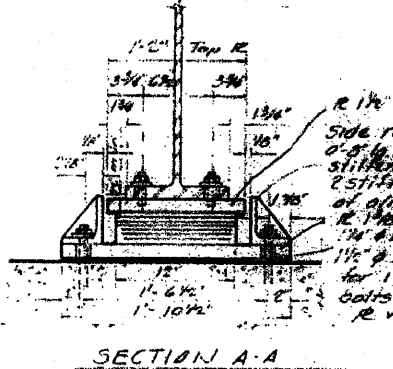
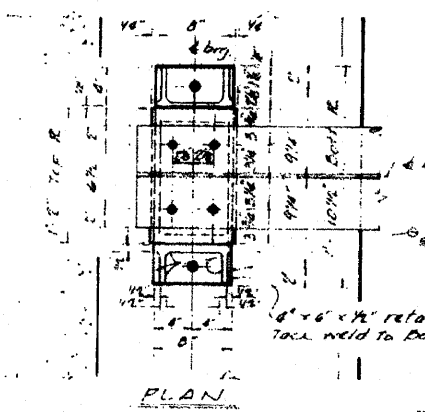
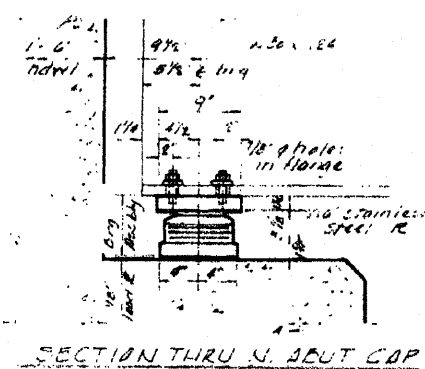


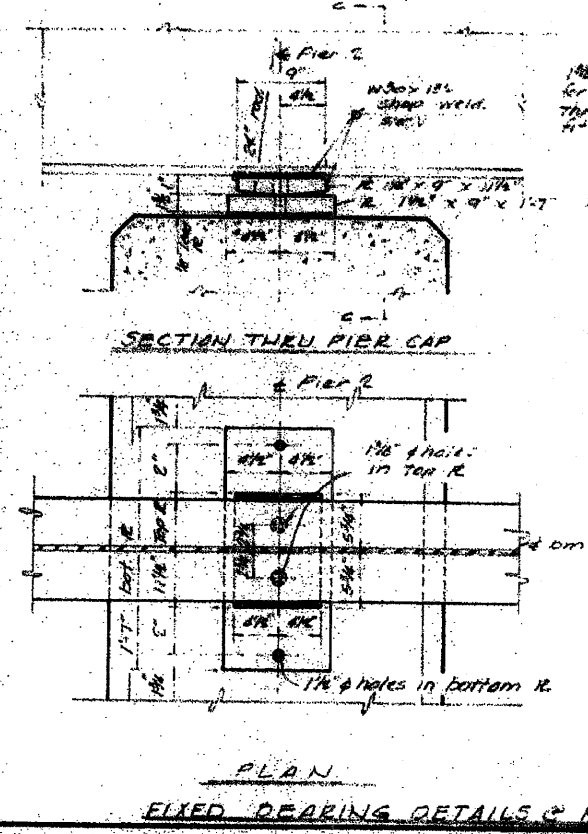
# FOR INFORMATION ONLY



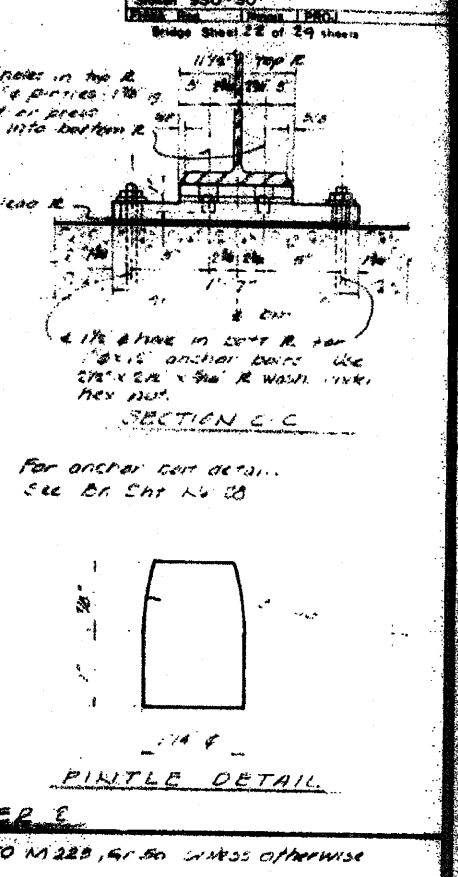
3/4" threaded studs (M16)  
3/4" lg w/ flat washers & hex nuts (4 req. ea. assembly).

Side retainers - 0'-8" lg with 3/4" x 2 1/2" x 1/4" stiffeners (1 R makes 2 stiffeners). Inside of outer beam inside of beam & 1 1/4" hole in side retainer for 1" x 12" anchor bolt. Use 2 1/2" x 2 1/2" x 1/4" washer under hex nut. For anchor bolt detail, see Br. Sht. No. 25.

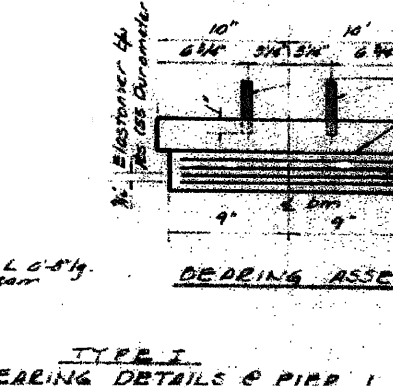
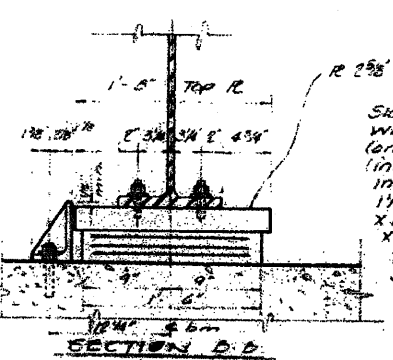
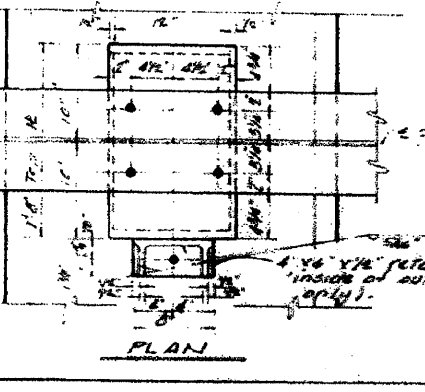
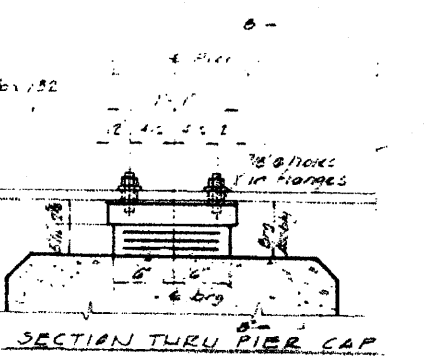
NOTE: The 1/8" TFE sheet shall be bonded directly to the top steel R with a two component, medium viscosity epoxy resin, conforming to the requirements of the Fed. Spec. TAMM A-138 Type 1. The bonding agent shall be applied on the full area of the contact surfaces. Bonding of 1/8" TFE sheet during vulcanizing process will be permitted provided the process and method of adjusting assembly height is approved by the Engineer.



NOTE: All steel R except side retainers shall be AASHTO M 228, G1 or G2 unless otherwise noted.

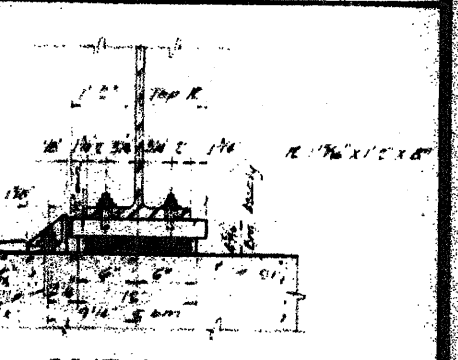
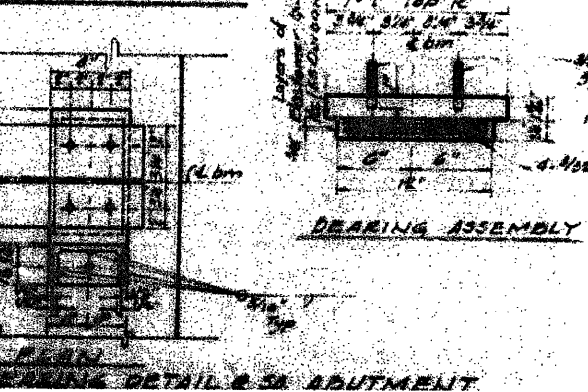
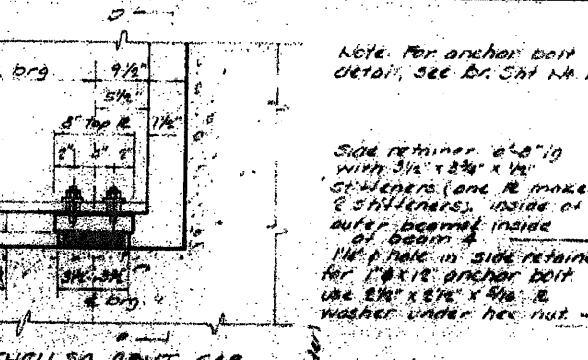


For anchor bolt detail, see Br. Sht. No. 25.



Side retainer - 0'-8" lg with 3/4" x 2 1/2" x 1/4" stiffeners (one R makes 2 stiffeners). Inside of outer beam inside of beam & 1 1/4" hole in side retainer for 1" x 12" anchor bolt. Use 2 1/2" x 2 1/2" x 1/4" washer under hex nut. For anchor bolt detail, see Br. Sht. No. 25.

NOTE: The 1/8" TFE sheet shall be bonded directly to the top steel R with a two component, medium viscosity epoxy resin, conforming to the requirements of the Fed. Spec. TAMM A-138 Type 1. The bonding agent shall be applied on the full area of the contact surfaces. Bonding of 1/8" TFE sheet during vulcanizing process will be permitted provided the process and method of adjusting assembly height is approved by the Engineer.



NOTE: For anchor bolt detail, see Br. Sht. No. 15.

Side retainer - 0'-8" lg with 3/4" x 2 1/2" x 1/4" stiffeners (one R makes 2 stiffeners). Inside of outer beam inside of beam & 1 1/4" hole in side retainer for 1" x 12" anchor bolt. Use 2 1/2" x 2 1/2" x 1/4" washer under hex nut.

FILE NAME =	USER NAME = linkdj
D:\NBR\Bridg Painting\Contracts\PAINTING\64G88\PLA\eng.dgn	
PLOT SCALE = 50.0000 / IN.	
PLOT DATE = Sat Jan 22 07:10:21 2011	

DESIGNED -	REVISD -
DRAWN -	REVISD -
CHECKED -	REVISD -
DATE -	REVISD -

STATE OF ILLINOIS  
DEPARTMENT OF TRANSPORTATION

Existing Bridge Plans  
Structure No. 037-0138

F.A. RTE.	SECTION	COUNTY	TOTAL SHEETS	SHEET NO.
var D2 Bridge Painting 2011-2		various	25	16
ILLINOIS FED. AID PROJECT			CONTRACT NO. 64G88	