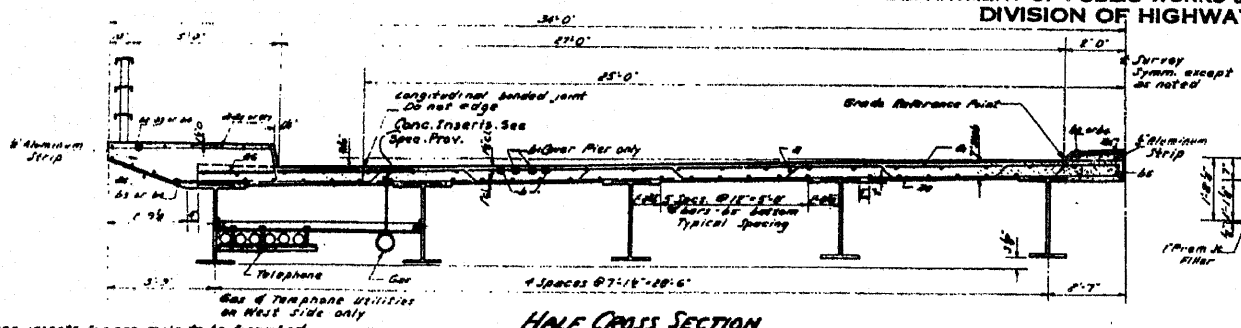
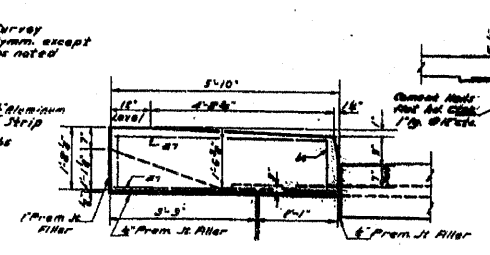


STATE OF ILLINOIS
DEPARTMENT OF PUBLIC WORKS & BUILDINGS
DIVISION OF HIGHWAYS

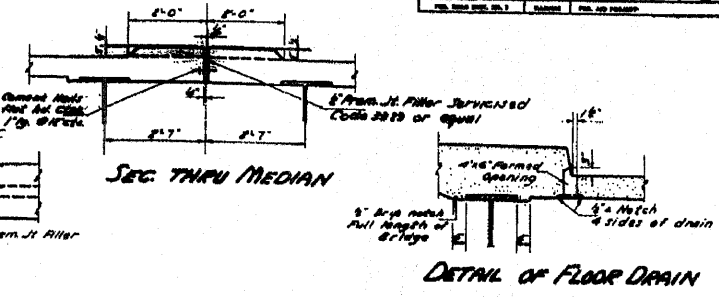
DATE	NO.	BY	CHKD.	APP'D.	SHEET NO. 3
4-11-21	10	WINNEBAGO	9	10	65' ETS



HALF CROSS SECTION



VIEW A-A

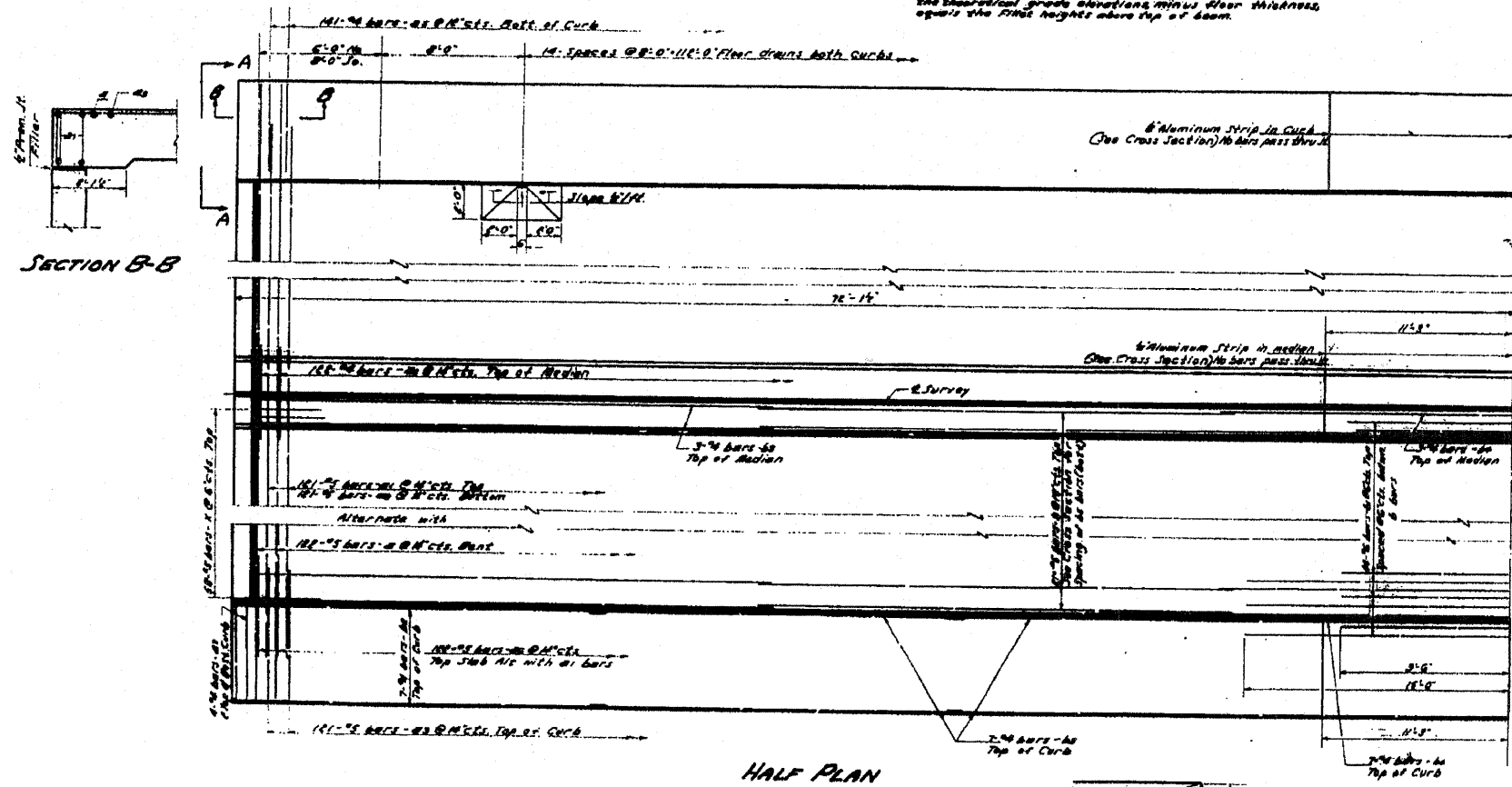


SEC THRU MEDIAN

DETAIL OF FLOOR DRAIN

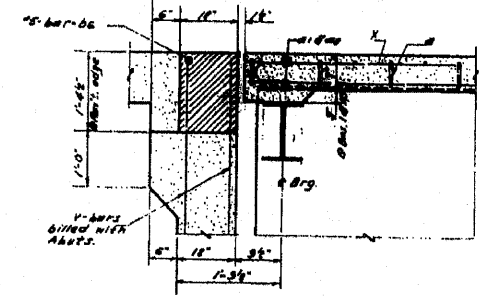
Hanger inserts for gas main to be furnished and installed by CONTRACTOR. Cost to be incidental. All material used to hang telephone conduits shall be furnished and installed by Wisconsin telephone Co.

METHOD OF DETERMINING FILLET HEIGHT-'x'
After all structural steel has been erected, elevations of the top flanges of the beams shall be taken at intervals not to exceed 10 ft. From these elevations, the amount of deflection for these points, determined from Dead load Deflection Diagram. The elevation is obtained subtracted from the theoretical grade elevations minus floor thickness equals the fillet height where top of beam.

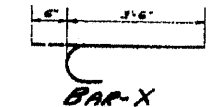


SECTION B-B

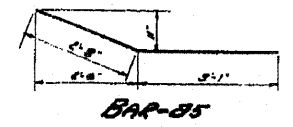
HALF PLAN



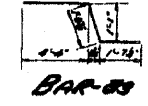
SEC. THRU ABUT.



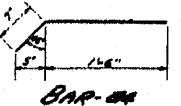
BAR-X



BAR-BS



BAR-BS

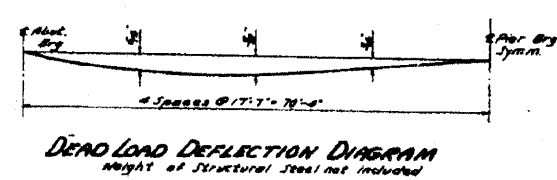


BAR-BS

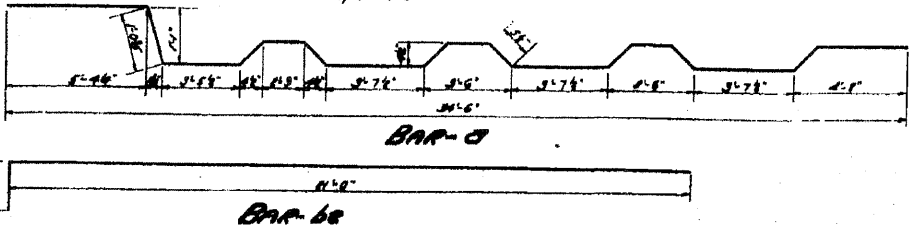
BILL OF MATERIAL
SUBSTRUCTURE

BAR NO.	SIZE	LENGTH	SHAPE
1	1/2"	25'	3x3"
2	1/2"	25'	3x3"
3	1/2"	25'	3x3"
4	1/2"	25'	3x3"
5	1/2"	25'	3x3"
6	1/2"	25'	3x3"
7	1/2"	25'	3x3"
8	1/2"	25'	3x3"
9	1/2"	25'	3x3"
10	1/2"	25'	3x3"
11	1/2"	25'	3x3"
12	1/2"	25'	3x3"
13	1/2"	25'	3x3"
14	1/2"	25'	3x3"
15	1/2"	25'	3x3"
16	1/2"	25'	3x3"
17	1/2"	25'	3x3"
18	1/2"	25'	3x3"
19	1/2"	25'	3x3"
20	1/2"	25'	3x3"
21	1/2"	25'	3x3"
22	1/2"	25'	3x3"
23	1/2"	25'	3x3"
24	1/2"	25'	3x3"
25	1/2"	25'	3x3"
26	1/2"	25'	3x3"
27	1/2"	25'	3x3"
28	1/2"	25'	3x3"
29	1/2"	25'	3x3"
30	1/2"	25'	3x3"
31	1/2"	25'	3x3"
32	1/2"	25'	3x3"
33	1/2"	25'	3x3"
34	1/2"	25'	3x3"
35	1/2"	25'	3x3"
36	1/2"	25'	3x3"
37	1/2"	25'	3x3"
38	1/2"	25'	3x3"
39	1/2"	25'	3x3"
40	1/2"	25'	3x3"
41	1/2"	25'	3x3"
42	1/2"	25'	3x3"
43	1/2"	25'	3x3"
44	1/2"	25'	3x3"
45	1/2"	25'	3x3"
46	1/2"	25'	3x3"
47	1/2"	25'	3x3"
48	1/2"	25'	3x3"
49	1/2"	25'	3x3"
50	1/2"	25'	3x3"
51	1/2"	25'	3x3"
52	1/2"	25'	3x3"
53	1/2"	25'	3x3"
54	1/2"	25'	3x3"
55	1/2"	25'	3x3"
56	1/2"	25'	3x3"
57	1/2"	25'	3x3"
58	1/2"	25'	3x3"
59	1/2"	25'	3x3"
60	1/2"	25'	3x3"
61	1/2"	25'	3x3"
62	1/2"	25'	3x3"
63	1/2"	25'	3x3"
64	1/2"	25'	3x3"
65	1/2"	25'	3x3"
66	1/2"	25'	3x3"
67	1/2"	25'	3x3"
68	1/2"	25'	3x3"
69	1/2"	25'	3x3"
70	1/2"	25'	3x3"
71	1/2"	25'	3x3"
72	1/2"	25'	3x3"
73	1/2"	25'	3x3"
74	1/2"	25'	3x3"
75	1/2"	25'	3x3"
76	1/2"	25'	3x3"
77	1/2"	25'	3x3"
78	1/2"	25'	3x3"
79	1/2"	25'	3x3"
80	1/2"	25'	3x3"
81	1/2"	25'	3x3"
82	1/2"	25'	3x3"
83	1/2"	25'	3x3"
84	1/2"	25'	3x3"
85	1/2"	25'	3x3"
86	1/2"	25'	3x3"
87	1/2"	25'	3x3"
88	1/2"	25'	3x3"
89	1/2"	25'	3x3"
90	1/2"	25'	3x3"
91	1/2"	25'	3x3"
92	1/2"	25'	3x3"
93	1/2"	25'	3x3"
94	1/2"	25'	3x3"
95	1/2"	25'	3x3"
96	1/2"	25'	3x3"
97	1/2"	25'	3x3"
98	1/2"	25'	3x3"
99	1/2"	25'	3x3"
100	1/2"	25'	3x3"

Class X Concrete Cu 100 275.0
Reinforcement Bars 141 48350
Structural Steel 165 34880
Metal Handrail 10.0 790



DEAD LOAD DEFLECTION DIAGRAM
Weight of Structural Steel not included



BAR-BS

DESIGNED	K. W. [Signature]
CHECKED	[Signature]
DRAWN	K. W. [Signature]
CHECKED	[Signature]

APRIL 9 1957
DESIGNED K. W. [Signature]
DRAWN K. W. [Signature]
CHECKED [Signature]

FOR INFORMATION ONLY

FILE NAME = G:\BRV\Bridge Painting\Contracts\PAINTING\64688\PLANeng.dgn	USER NAME = linkdj	DESIGNED -	REVISED -	STATE OF ILLINOIS DEPARTMENT OF TRANSPORTATION	Existing Bridge Plans Structure No. 101-0003	F.A. RTE. = var D2 Bridge Painting 2011-2	SECTION = various	COUNTY = WINNEBAGO COUNTY	TOTAL SHEETS = 25	SHEET NO. = 25
PLOT SCALE = 50.0000 / IN.	CHECKED -	REVISED -	REVISED -	SCALE: _____	SHEET NO. _____ OF _____ SHEETS	CONTRACT NO. 64688	ILLINOIS FED. AID PROJECT			