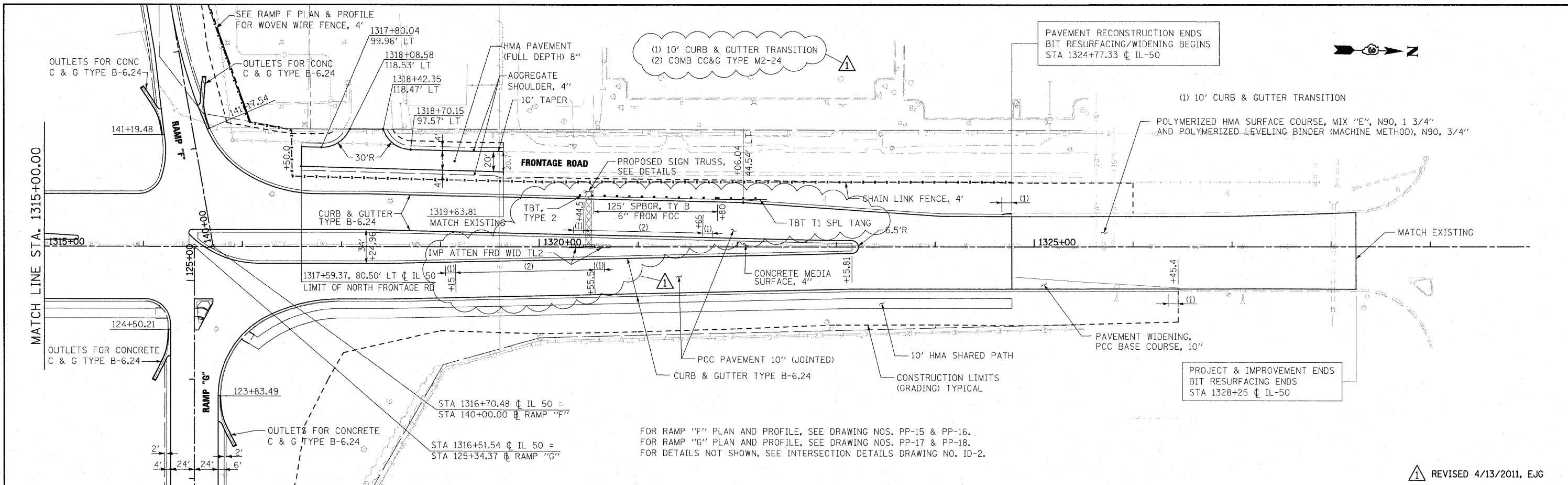


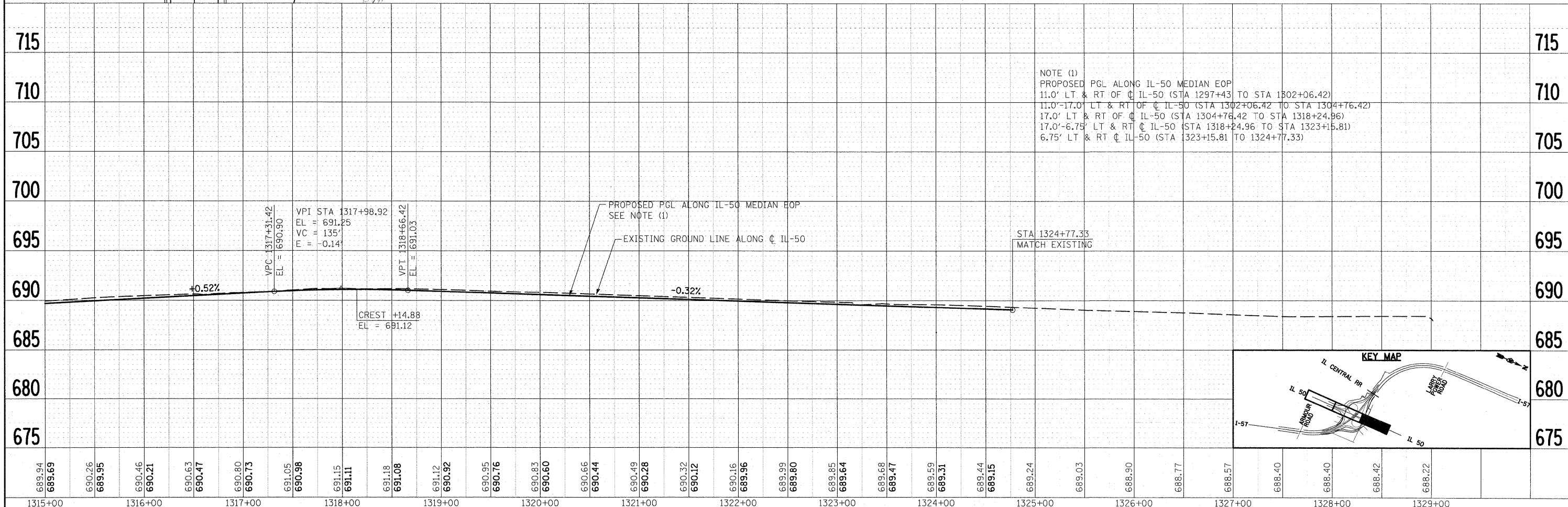
PLAN	SURVEYED	DATE
	PLOTTED	
	ALIGNMENT CHECKED	
	GRADES CHECKED	
	STRUCTURE NOTATIONS CHECKED	
	NOTE BOOK NO.	
	PAID FILE NAME	

PROFILE	SURVEYED	DATE
	PLOTTED	
	GRADES CHECKED	
	STRUCTURE NOTATIONS CHECKED	
	NOTE BOOK NO.	
	PAID FILE NAME	

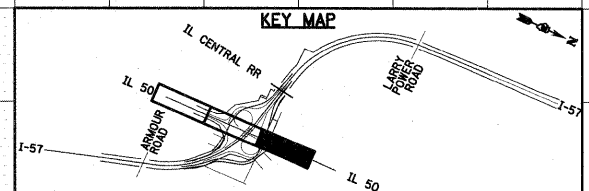


FOR RAMP "F" PLAN AND PROFILE, SEE DRAWING NOS. PP-15 & PP-16.
 FOR RAMP "G" PLAN AND PROFILE, SEE DRAWING NOS. PP-17 & PP-18.
 FOR DETAILS NOT SHOWN, SEE INTERSECTION DETAILS DRAWING NO. ID-2.

REVISD 4/13/2011, E.J.G.



NOTE (1)
 PROPOSED PGL ALONG IL-50 MEDIAN EOP
 11.0' LT & RT OF CL IL-50 (STA 1297+43 TO STA 1302+06.42)
 11.0'-17.0' LT & RT OF CL IL-50 (STA 1302+06.42 TO STA 1304+76.42)
 17.0' LT & RT OF CL IL-50 (STA 1304+76.42 TO STA 1318+24.96)
 17.0'-6.75' LT & RT CL IL-50 (STA 1318+24.96 TO STA 1323+15.81)
 6.75' LT & RT CL IL-50 (STA 1323+15.81 TO 1324+77.33)



FILE NAME = 1:\Dgn\sheet\pp012.dgn	USER NAME = EricG	DESIGNED - JTF	REVISED -	STATE OF ILLINOIS DEPARTMENT OF TRANSPORTATION	IL 50 PROPOSED PLAN AND PROFILE	F.A.I. RTE. 57	SECTION (46-2) I, HBR, VBR	COUNTY KANKAKEE	TOTAL SHEETS 558	SHEET NO. 62	
PLOT SCALE = 1:50	CHECKED - E.J.G.	DATE - 12/17/10	REVISED -			CONTRACT NO. 66409					
PLOT DATE = 4/14/2011	DATE - 12/17/10	REVISED -	REVISED -			FED. ROAD DIST. NO. 3 [ILLINOIS] FED. AID PROJECT					
						SCALE: SHEET NO. OF SHEETS STA. TO STA.					