

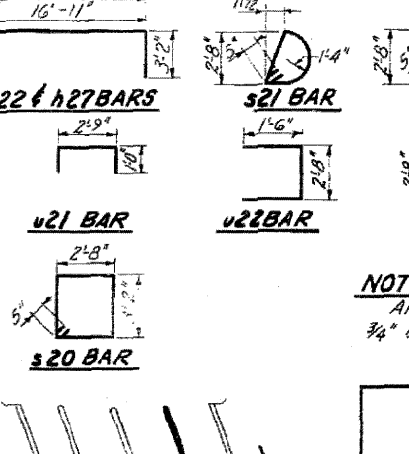
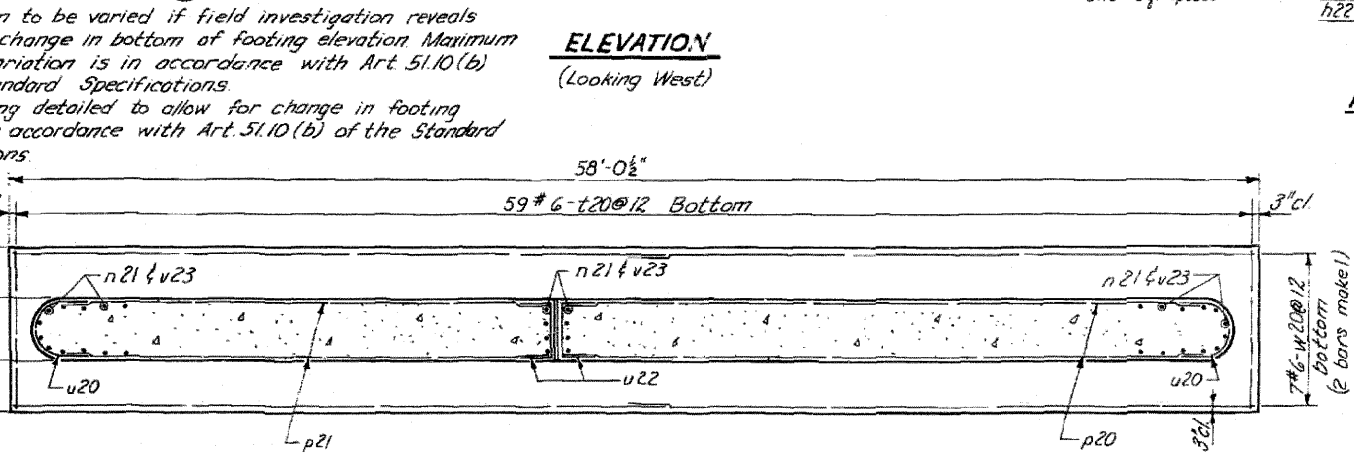
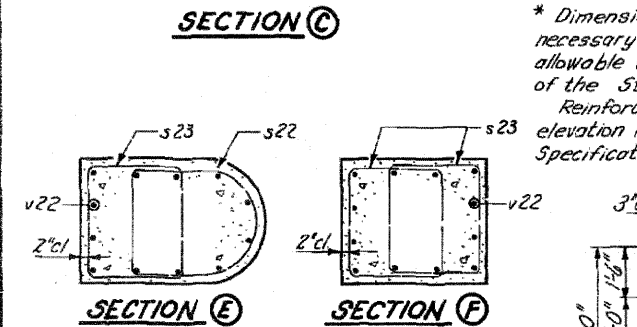
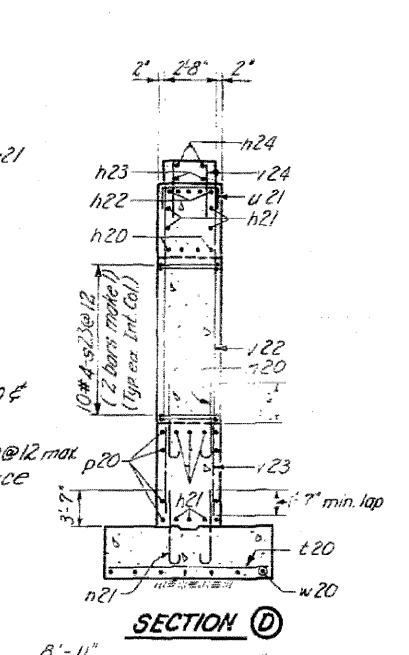
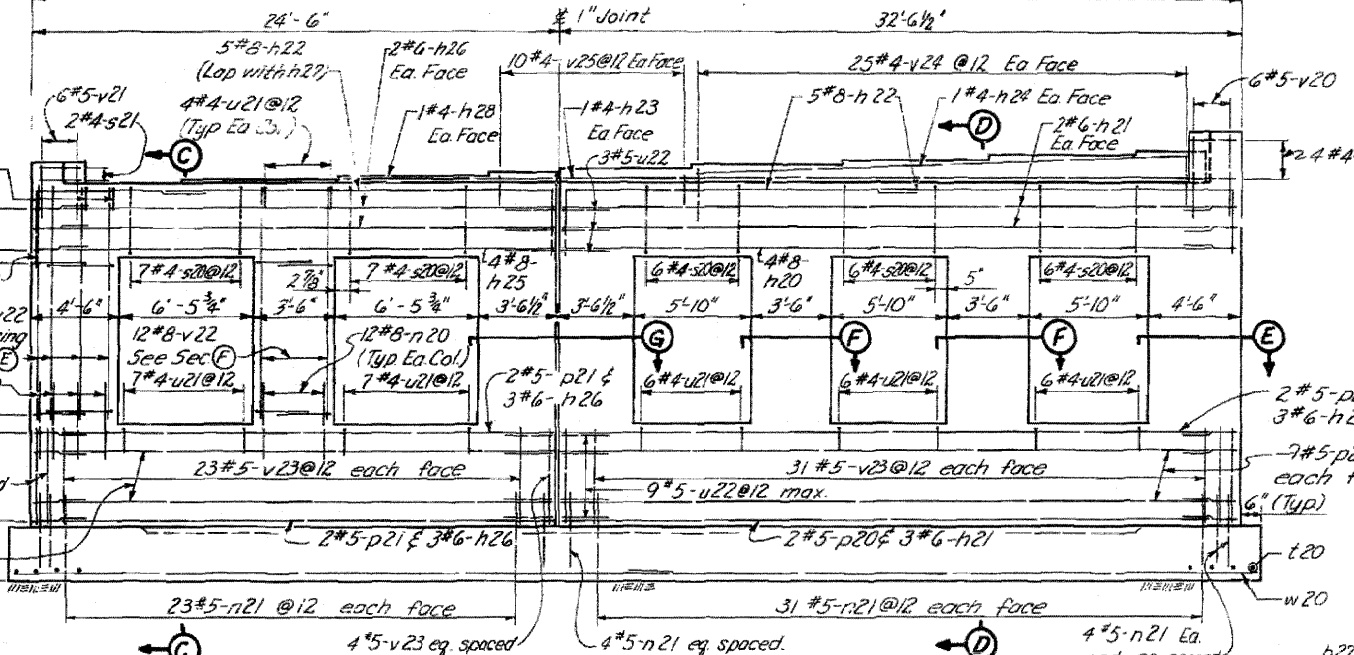
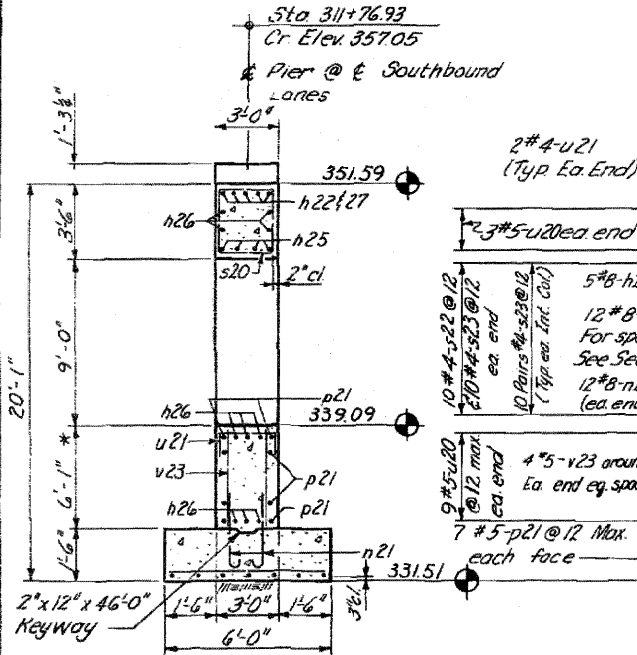
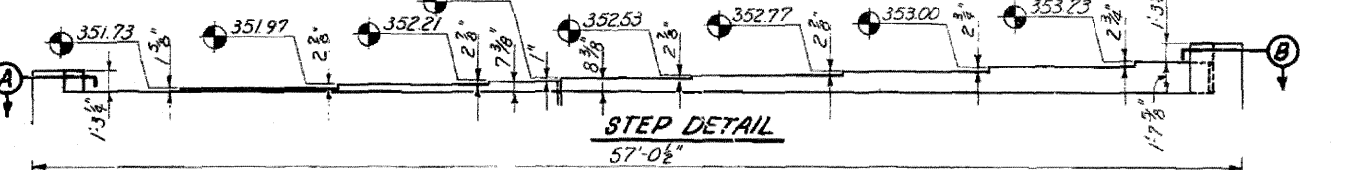
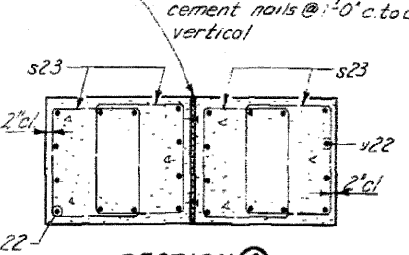
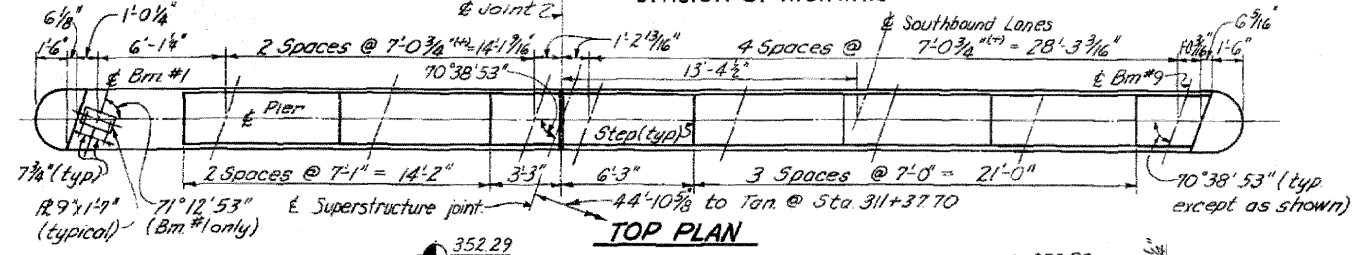
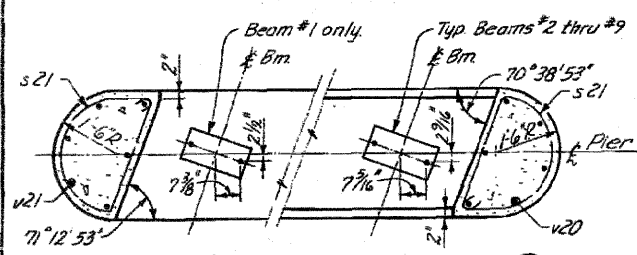
STATE OF ILLINOIS
DEPARTMENT OF PUBLIC WORKS & BUILDINGS
DIVISION OF HIGHWAYS

| | | | | |
|--|------|----------|--------------|-----------|
| ROUTE NO. | SEC. | COUNTY | TOTAL SHEETS | SHEET NO. |
| F.A.I.-57 | 46-2 | KANKAKEE | 46 | 26 |
| TO STA. | | | | |
| FED. ROAD DIST. NO. ILLINOIS; FED. AID PROJECT | | | | |

SHT. 16
OF 29

BILL OF MATERIAL

| Bar No | Size | Length | Shape |
|----------------------------|--------|---------|--------|
| h20 | 4 #8 | 30'-9" | |
| h21 | 10 #6 | 30'-9" | |
| h22 | 15 #8 | 20'-1" | |
| h23 | 2 #4 | 30'-9" | |
| h24 | 2 #4 | 24'-6" | |
| h25 | 4 #8 | 22'-9" | |
| h26 | 10 #6 | 22'-9" | |
| h27 | 5 #8 | 12'-7" | |
| h28 | 2 #4 | 9'-9" | |
| | | | |
| n20 | 84 #8 | 5'-3" | |
| n21 | 124 #5 | 5'-3" | |
| | | | |
| p20 | 10 #5 | 30'-9" | |
| p21 | 18 #5 | 22'-9" | |
| | | | |
| s20 | 32 #4 | 12'-6" | |
| s21 | 6 #4 | 8'-10" | |
| s22 | 20 #4 | 11'-7" | |
| s23 | 120 #4 | 10'-6" | |
| | | | |
| t20 | 59 #6 | 5'-6" | |
| u20 | 24 #5 | 7'-3" | |
| u21 | 36 #4 | 4'-9" | |
| u22 | 24 #5 | 5'-8" | |
| | | | |
| v20 | 6 #5 | 2'-0" | |
| v21 | 6 #5 | 2'-3" | |
| v22 | 84 #8 | 2'-3" | |
| v23 | 124 #5 | 5'-11" | |
| v24 | 50 #4 | 2'-6" | |
| v25 | 20 #4 | 1'-6" | |
| w20 | 14 #6 | 29'-6" | |
| | | | |
| Class X Concrete | | Cu. Yd. | 1099 |
| Reinforcement Bars | | Lbs. | 11,852 |
| Class A Excav. for Struct. | | Cu. Yd. | 103 |



NOTE:
All edges shall have standard 3/4" chamfer except footing.

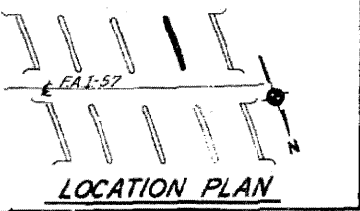
ILLINOIS DIVISION OF HIGHWAYS
PIER NO. 3, SOUTH BRIDGE
F.A.I. RTE. 57 SEC. 46-2 HB
KANKAKEE COUNTY
STA. 311 + 37.70

DESIGNED VNS.
CHECKED D.M.
DRAWN L.S. & J.L.C.
CHECKED L.J.L.

EXAMINED
ENGINEER OF BRIDGE AND TRAFFIC STRUCTURES

PASSED
ENGINEER OF DESIGN

APPROVED
CHIEF HIGHWAY ENGINEER



FOR INFORMATION ONLY Added 4-26-11