

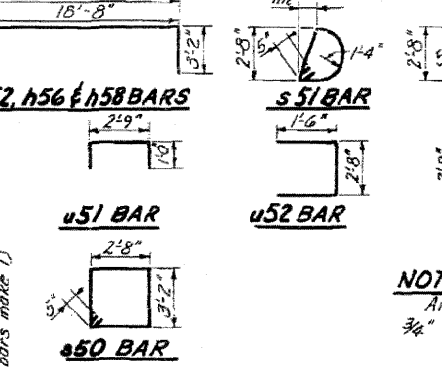
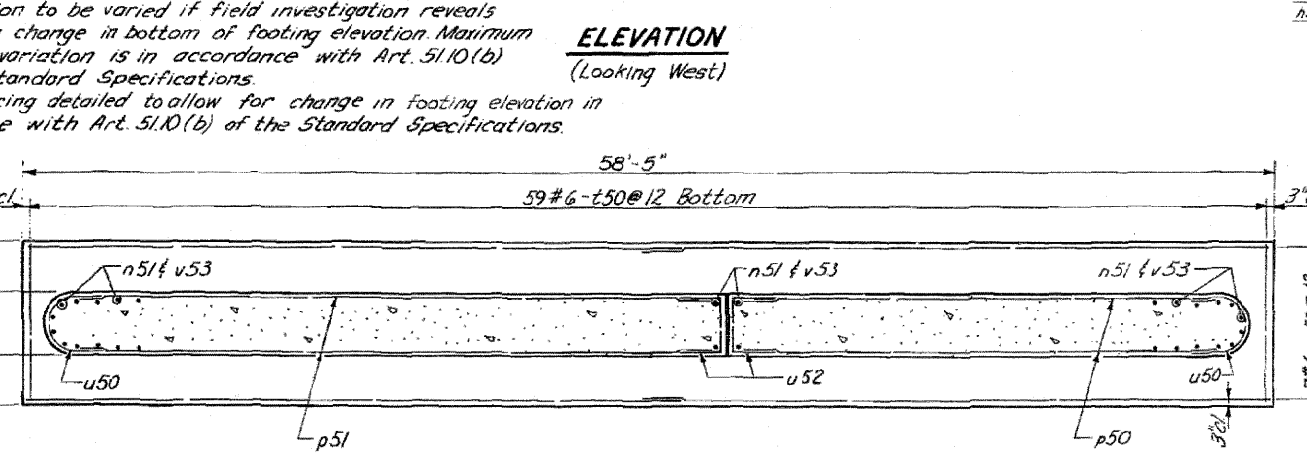
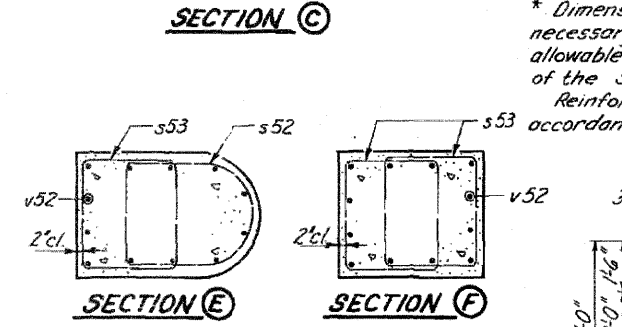
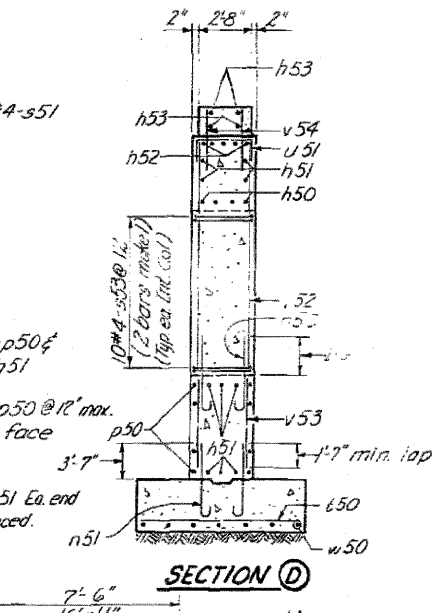
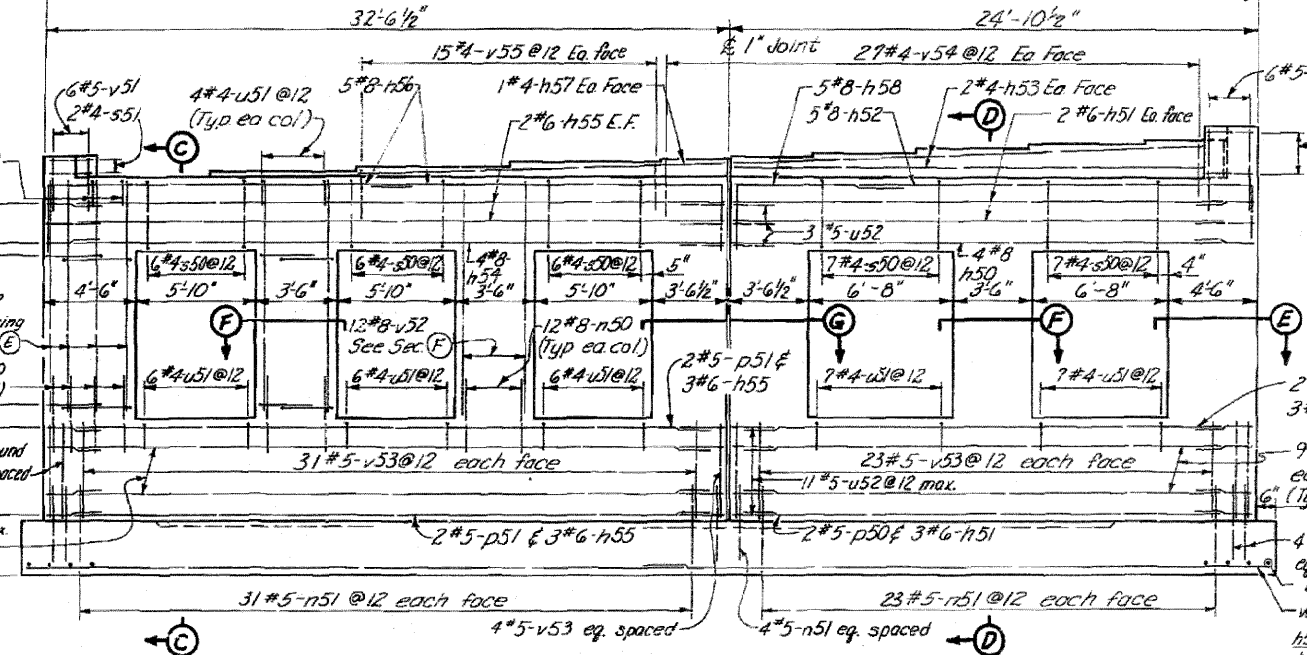
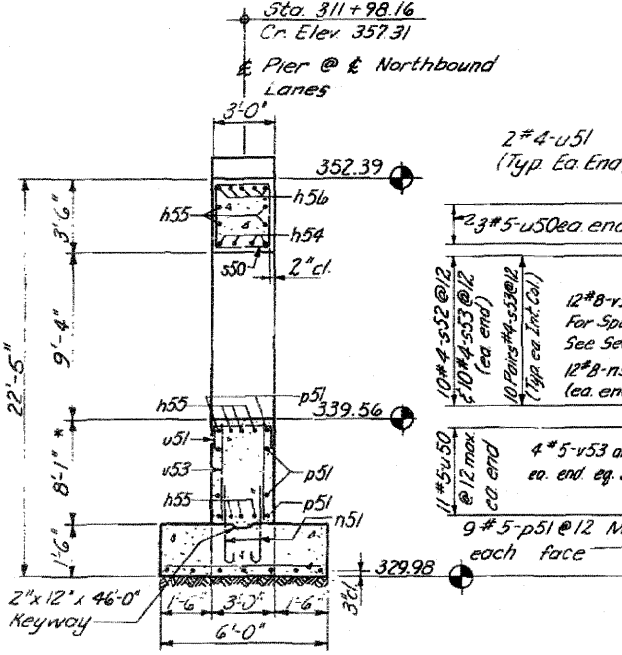
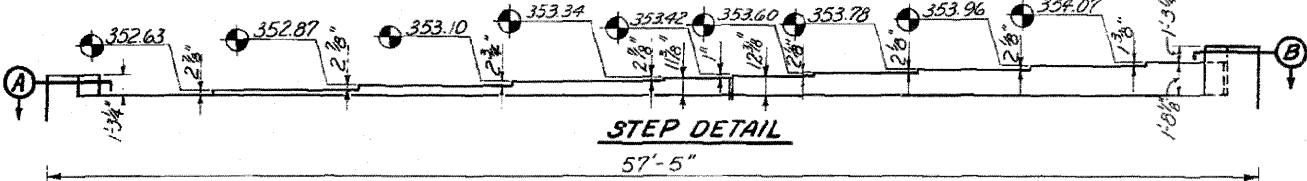
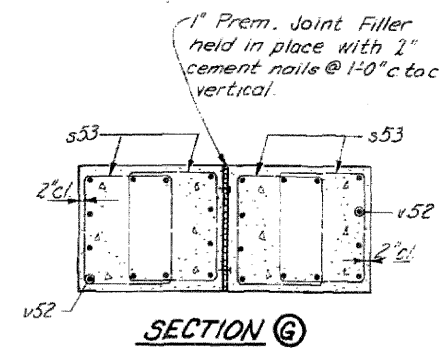
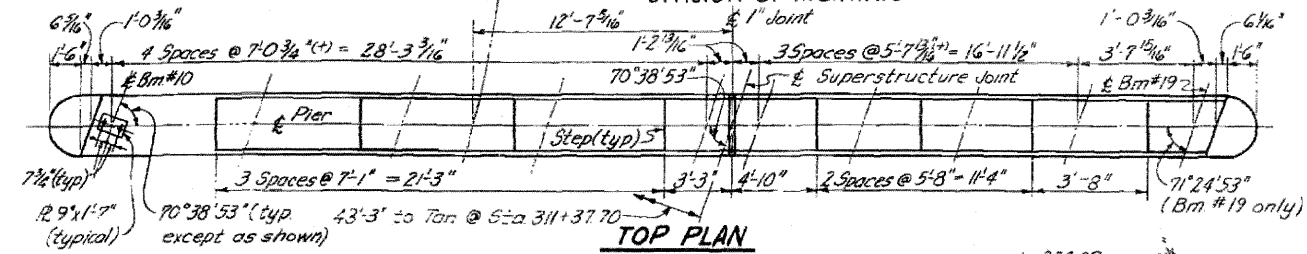
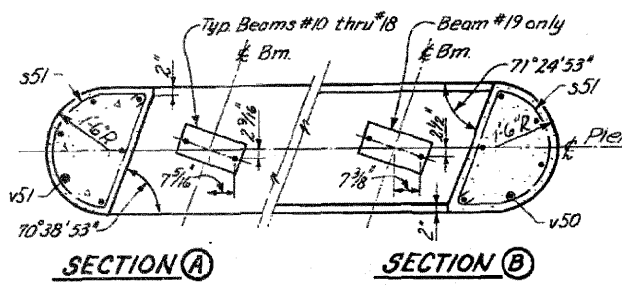
STATE OF ILLINOIS
DEPARTMENT OF PUBLIC WORKS & BUILDINGS
DIVISION OF HIGHWAYS

ROUTE NO.	SEC.	COUNTY	TOTAL SHEETS	SHEET NO.
FAI-57	46-2 NB	KANKAKEE	46	29
STA.	TO STA.			
	FED. ROAD DIST. NO. 7 ILLINOIS FED. AID PROJECT			

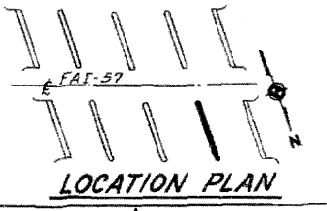
SHT. 19
OF 29

BILL OF MATERIAL

Bar	No.	Size	Length	Shape
h50	4	#8	23'-0"	
h51	10	#6	23'-0"	
h52	5	#8	21'-10"	
h53	4	#4	23'-0"	
h54	4	#8	30'-9"	
h55	10	#6	30'-9"	
h56	10	#8	20'-1"	
h57	2	#4	17'-0"	
h58	5	#8	10'-8"	
n50	84	#8	5'-3"	
n51	124	#5	5'-3"	
p50	22	#5	23'-0"	
p51	22	#5	30'-9"	
s50	32	#4	12'-6"	
s51	6	#4	8'-10"	
s52	20	#4	11'-7"	
s53	120	#4	10'-6"	
t50	59	#6	5'-6"	
u50	28	#5	7'-3"	
u51	56	#4	4'-9"	
u52	28	#5	5'-8"	
v50	6	#5	4'-0"	
v51	6	#5	2'-3"	
v52	84	#8	12'-6"	
v53	124	#5	8'-0"	
v54	59	#4	2'-6"	
v55	30	#4	1'-9"	
w50	14	#6	29'-7"	
Class X Concrete	Cu. Yd.	124.2		
Reinforcement Bars	Lbs.	12,491		
Class A Excav for Struct.	Cu. Yd.	116		



NOTE:
All edges shall have standard 3/4" chamfer except footing.



ILLINOIS DIVISION OF HIGHWAYS
PIER NO. 3, NORTH BRIDGE
FAI. RTE. 57 SEC. 46-2 NB
KANKAKEE COUNTY
STA. 311+37.70
Added 4-26-16

DESIGNED	VNS.	EXAMINED	
CHECKED	D.V.	ENGINEER OF BRIDGE AND TRAFFIC STRUCTURES	
DRAWN	J.L.C.	PASSED	
CHECKED	L.J.L.	ENGINEER OF DESIGN	
		APPROVED	
		CHIEF HIGHWAY ENGINEER	

FOR INFORMATION ONLY