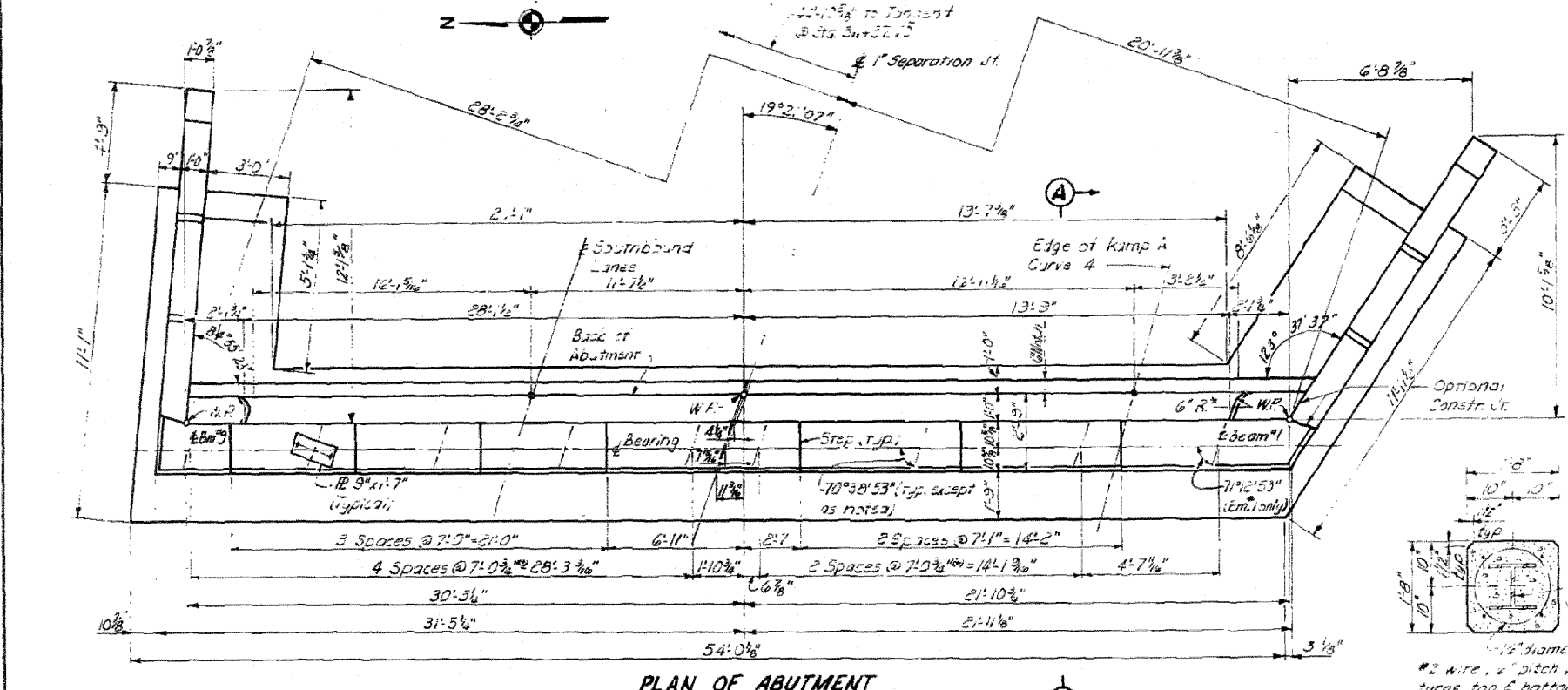
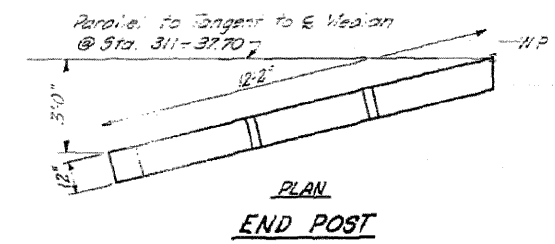
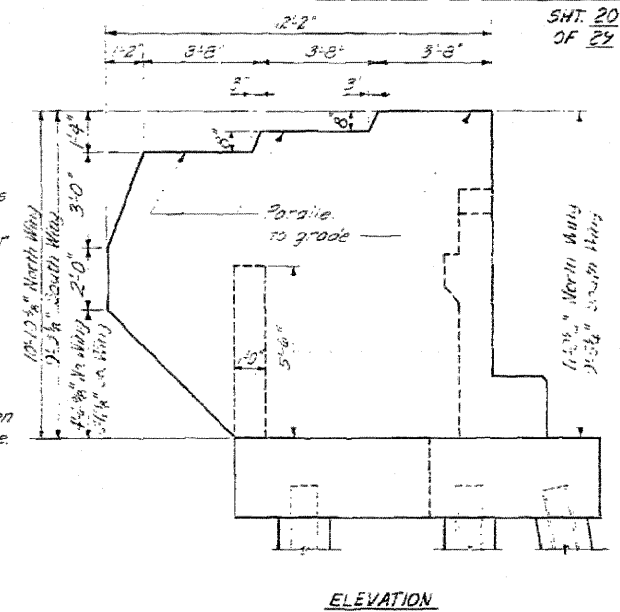
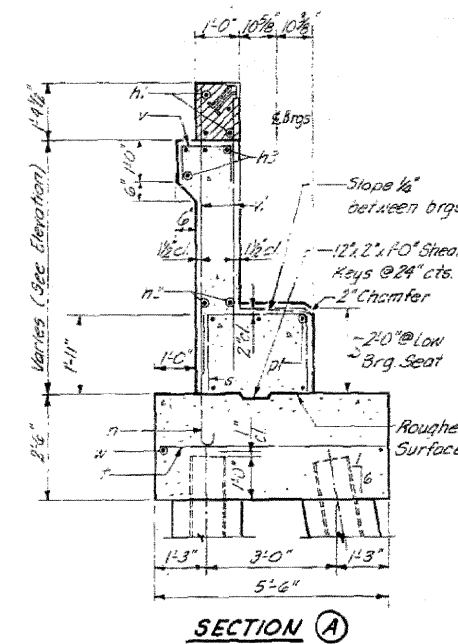
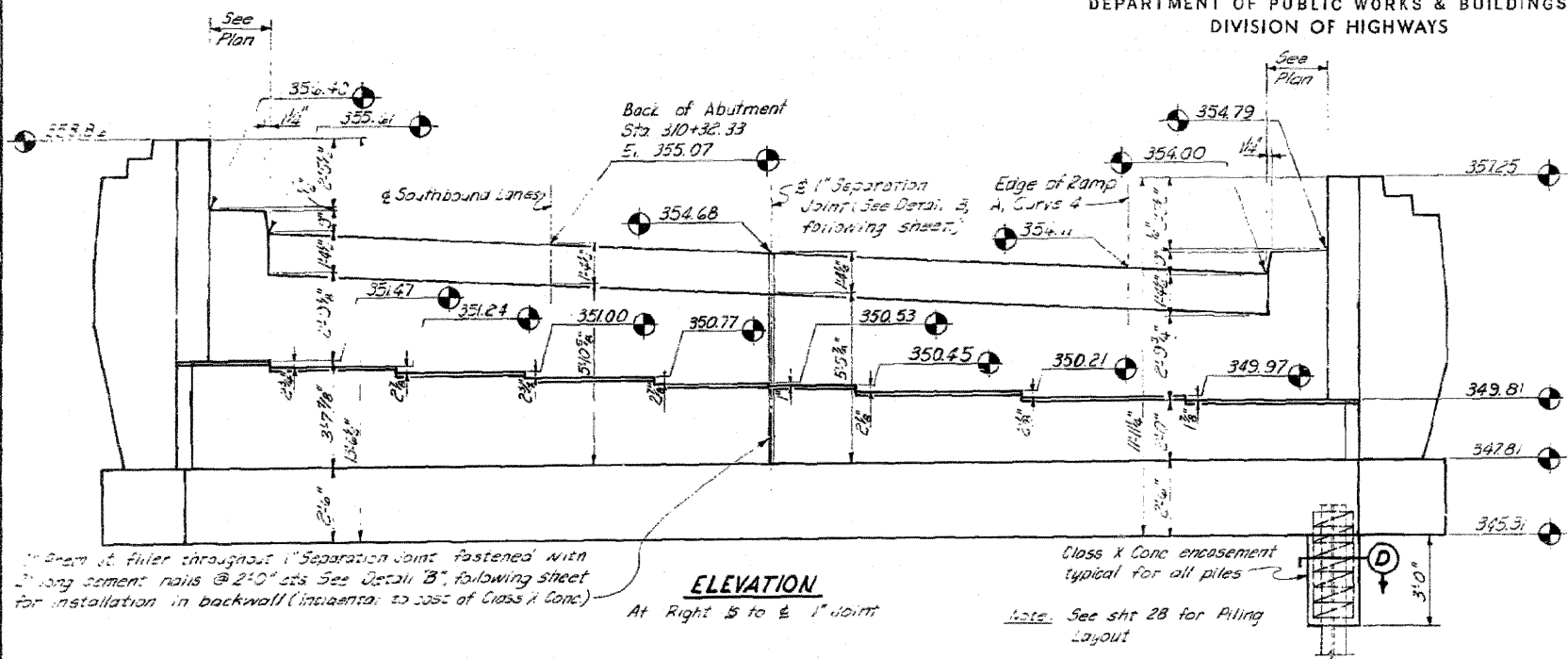


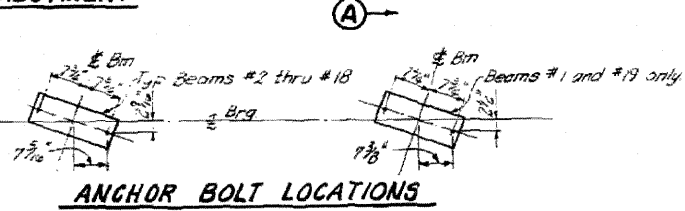
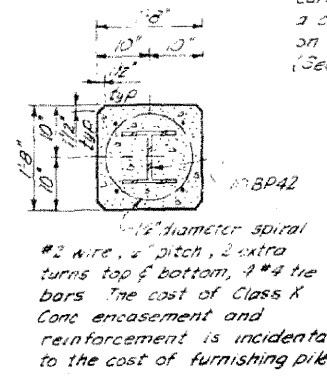
STATE OF ILLINOIS
DEPARTMENT OF PUBLIC WORKS & BUILDINGS
DIVISION OF HIGHWAYS

ROW'S NO.	SEC.	COUNTY	TOTAL SHEETS	SHEET NO.
FAI-57	46-2	KANKAKEE	46	30
STA.	TO STA.			
FED. ROAD DIST. NO. 7 ILLINOIS' FED. AID PROJECT.				

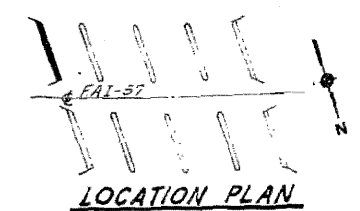
SHT. 20
OF 24



* CONTRACTOR SHALL CONSTRUCT CURB WITHOUT RADIUS WHEN A CURB & GUTTER ARE USED ON BRIDGE APPROACHES. (See ROAD PLANS)



DESIGNED	WRT	EXAMINED	
CHECKED	LJL	ENGINEER OF BRIDGE AND TRAFFIC STRUCTURES	
DRAWN	L.S.	PASSED	
CHECKED	WRT	ENGINEER OF DESIGN	
		APPROVED	
		CHIEF HIGHWAY ENGINEER	



ILLINOIS DIVISION OF HIGHWAYS
SOUTH BRIDGE, EAST ABUTMENT DIMENSIONS
FAI-RTE. 57 SEC. 46-2 HB
KANKAKEE COUNTY
STA. 311+37.70
Added 4-26-11

FOR INFORMATION ONLY