

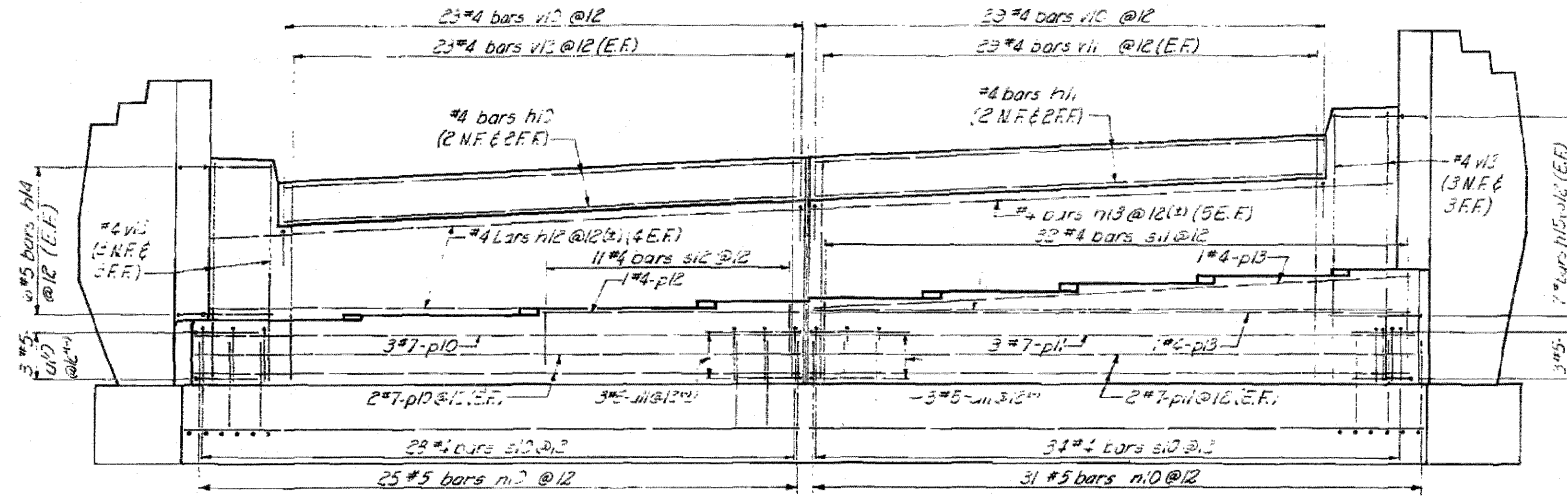
STATE OF ILLINOIS DEPARTMENT OF PUBLIC WORKS & BUILDINGS DIVISION OF HIGHWAYS

POLY. NO.	SEC.	COUNTY	TOTAL SHEETS	SHEET NO.
FAL-57	46-2	KANKAKEE	46	33

STA. TO STA. ILL. RD. DIST. NO. 7 ILLINOIS FED. AID PROJECT

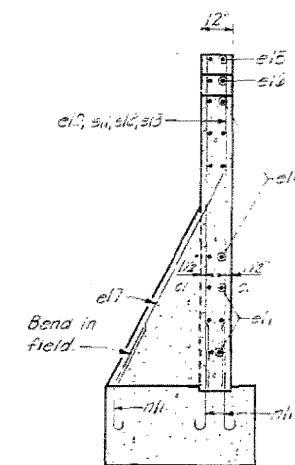
A

12 #4 bars @ 3' tops (each face) 4-e10, 4-e11, 2-e12, 2-e13 #4 bars @ 5' 2#4 bars @ 12' (each face)

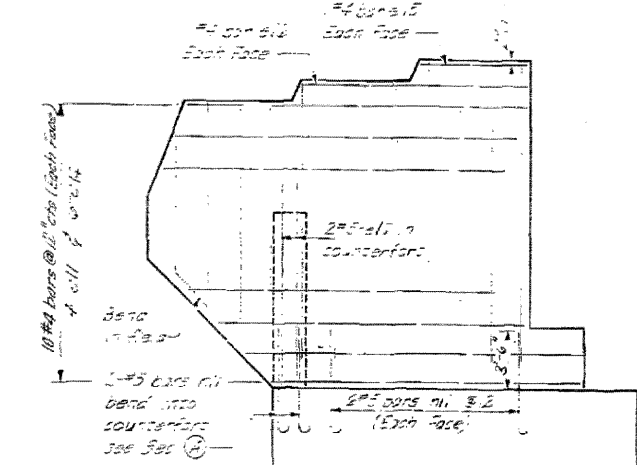


ELEVATION

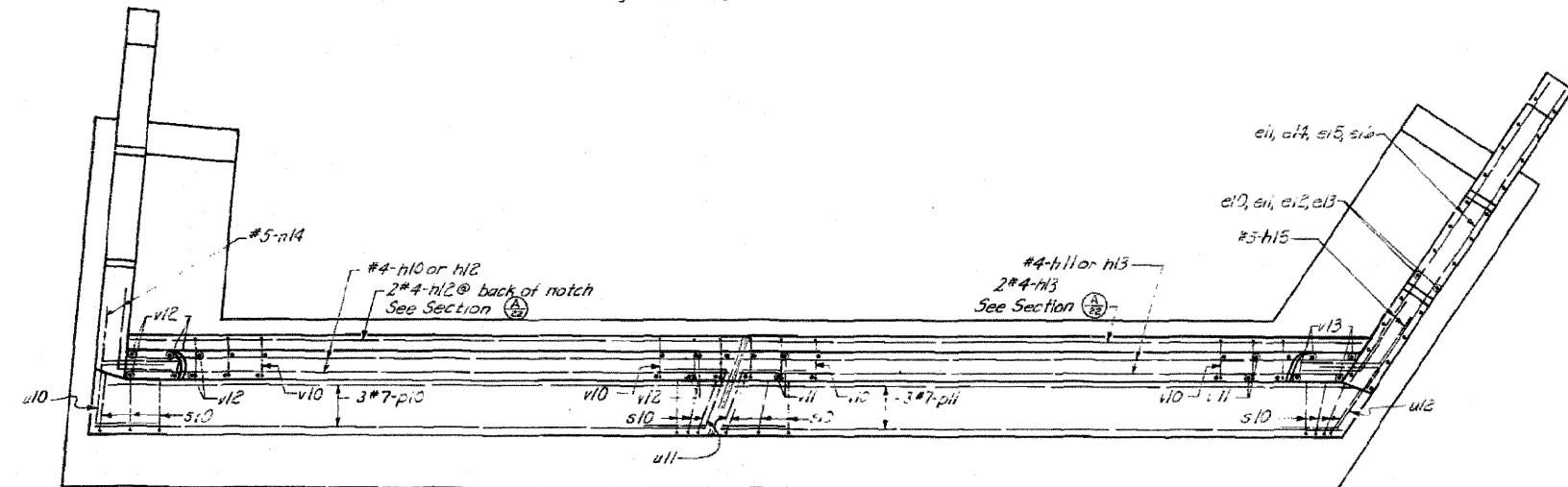
At Right is to E



SECTION A



END POST ELEVATION



PLAN OF ABUTMENT

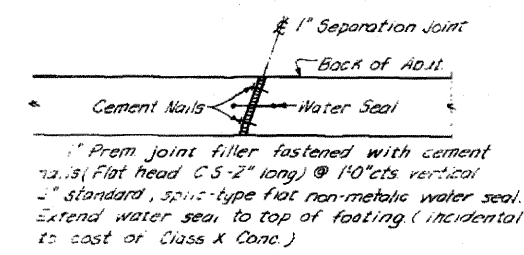
**BAR LIST - ONE ABUTMENT**

Bar No.	Size	Length	Shape	Qty.
n10	#10	31.5"	---	12
n11	#10	27.3"	---	2
n12	#10	34.0"	---	2
n13	#10	30.0"	---	2
n14	#10	4.9"	---	2
n15	#10	3.0"	---	2
n16	#10	3.0"	---	2
n17	#10	3.0"	---	2
n18	#10	3.0"	---	2
n19	#10	3.0"	---	2
n20	#10	3.0"	---	2
n21	#10	3.0"	---	2
n22	#10	3.0"	---	2
n23	#10	3.0"	---	2
n24	#10	3.0"	---	2
n25	#10	3.0"	---	2
n26	#10	3.0"	---	2
n27	#10	3.0"	---	2
n28	#10	3.0"	---	2
n29	#10	3.0"	---	2
n30	#10	3.0"	---	2
n31	#10	3.0"	---	2
n32	#10	3.0"	---	2
n33	#10	3.0"	---	2
n34	#10	3.0"	---	2
n35	#10	3.0"	---	2

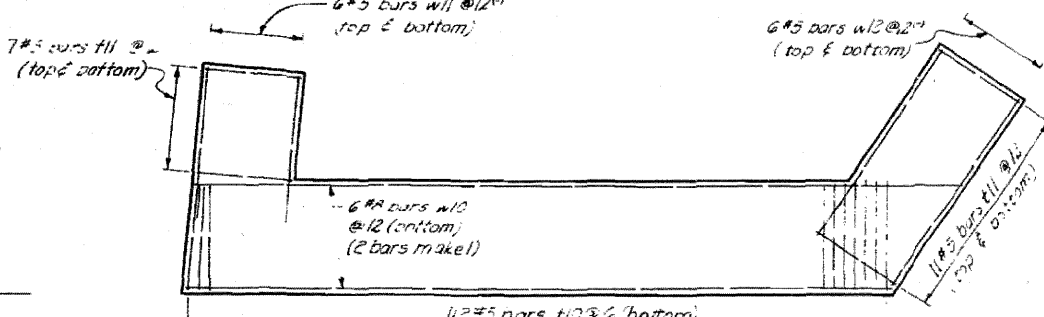
  

**BAR LIST - TWO END POSTS**

Bar No.	Size	Length	Shape	Qty.
e10	#10	3.0"	---	2
e11	#10	3.0"	---	2
e12	#10	3.0"	---	2
e13	#10	3.0"	---	2
e14	#10	3.0"	---	2
e15	#10	3.0"	---	2
e16	#10	3.0"	---	2
e17	#10	3.0"	---	2
e18	#10	3.0"	---	2
e19	#10	3.0"	---	2
e20	#10	3.0"	---	2
e21	#10	3.0"	---	2
e22	#10	3.0"	---	2
e23	#10	3.0"	---	2
e24	#10	3.0"	---	2
e25	#10	3.0"	---	2
e26	#10	3.0"	---	2
e27	#10	3.0"	---	2
e28	#10	3.0"	---	2
e29	#10	3.0"	---	2
e30	#10	3.0"	---	2
e31	#10	3.0"	---	2
e32	#10	3.0"	---	2

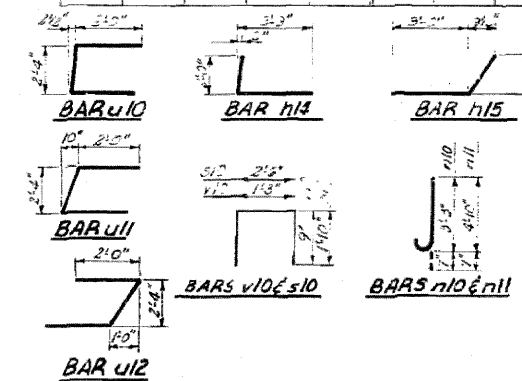


DETAIL B



FOOTING PLAN

DESIGNED	WRT	EXAMINED	
CHECKED	L.J.L.	PASSED	
DRAWN	L.S.	APPROVED	
CHECKED	WRT		



**BILL OF MATERIAL**

Concrete 237 cu yd

Reinforcement Bars 237 cu yd

Steel Piles (30F42) 2 - 50' L

Steel Pipe (30F42) 2 - 50' L

ILLINOIS DIVISION OF HIGHWAYS

SOUTH BRIDGE, WEST ABUTMENT

REINFORCEMENT

FAL-RTE. 57 SEC. 46-2 HB

KANKAKEE COUNTY

STA. 311+37.70

FOR INFORMATION ONLY (Added 4-26-11)