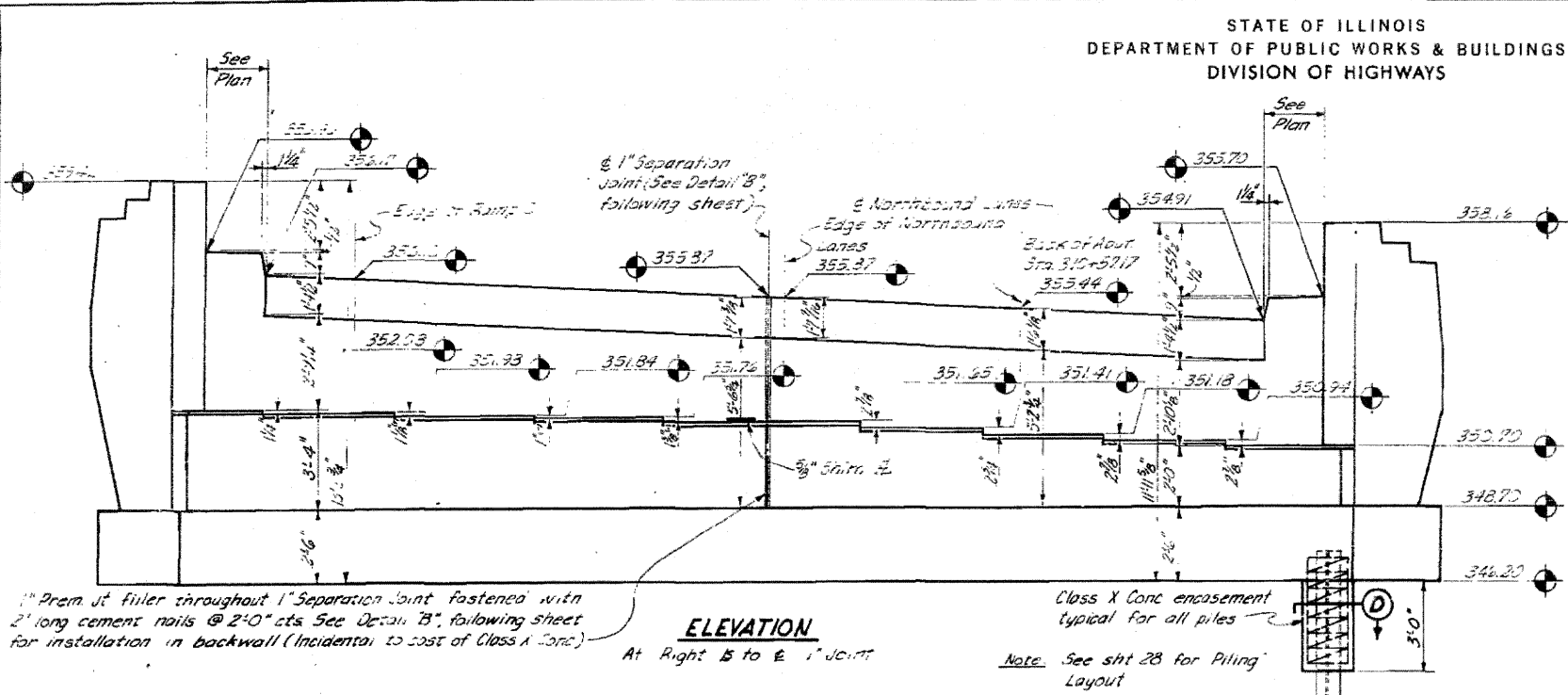


STATE OF ILLINOIS
DEPARTMENT OF PUBLIC WORKS & BUILDINGS
DIVISION OF HIGHWAYS

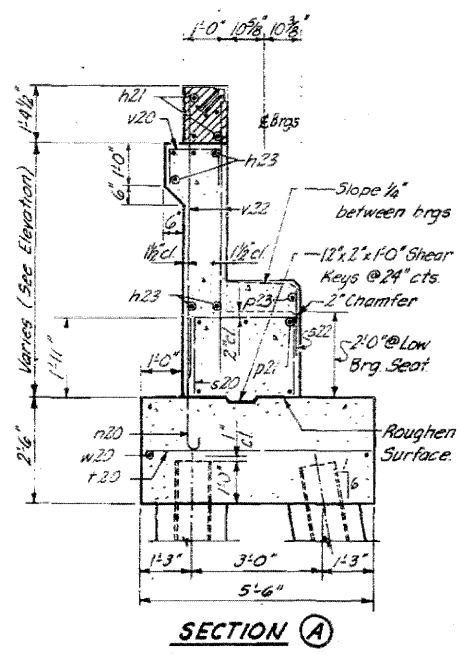
ROUTE NO.	SEC.	COUNTY	TOTAL SHEETS	SHEET NO.
FAL-57	46-2	KANKAKEE	46	34
STA.		TO STA.		
FED. ROAD DIST. No. 7 ILLINOIS FED. AID PROJECT				



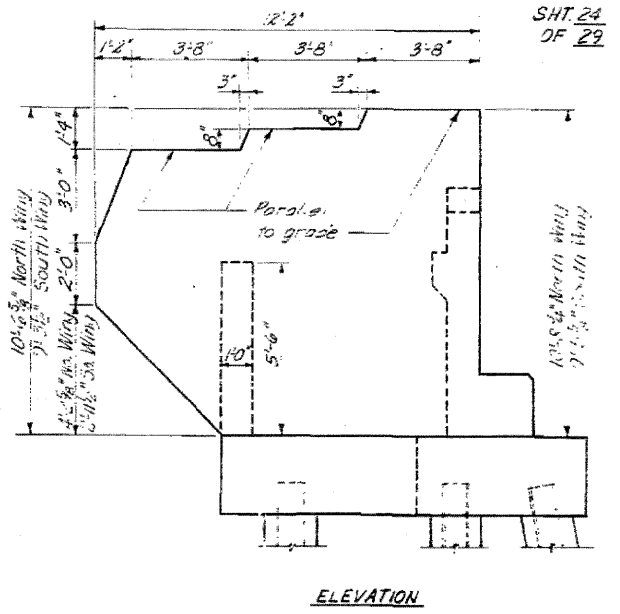
1" Prism of filler throughout 1" Separation Joint fastened with 2' long cement nails @ 2'0" cts. See Detail B, following sheet for installation in backwall (Incidental to cost of Class A Conc.)

ELEVATION

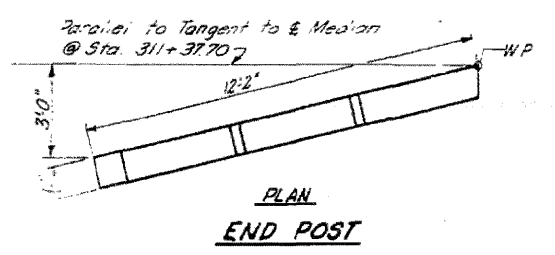
Class X Conc encasement typical for all piles
Note: See sht 28 for Piling Layout



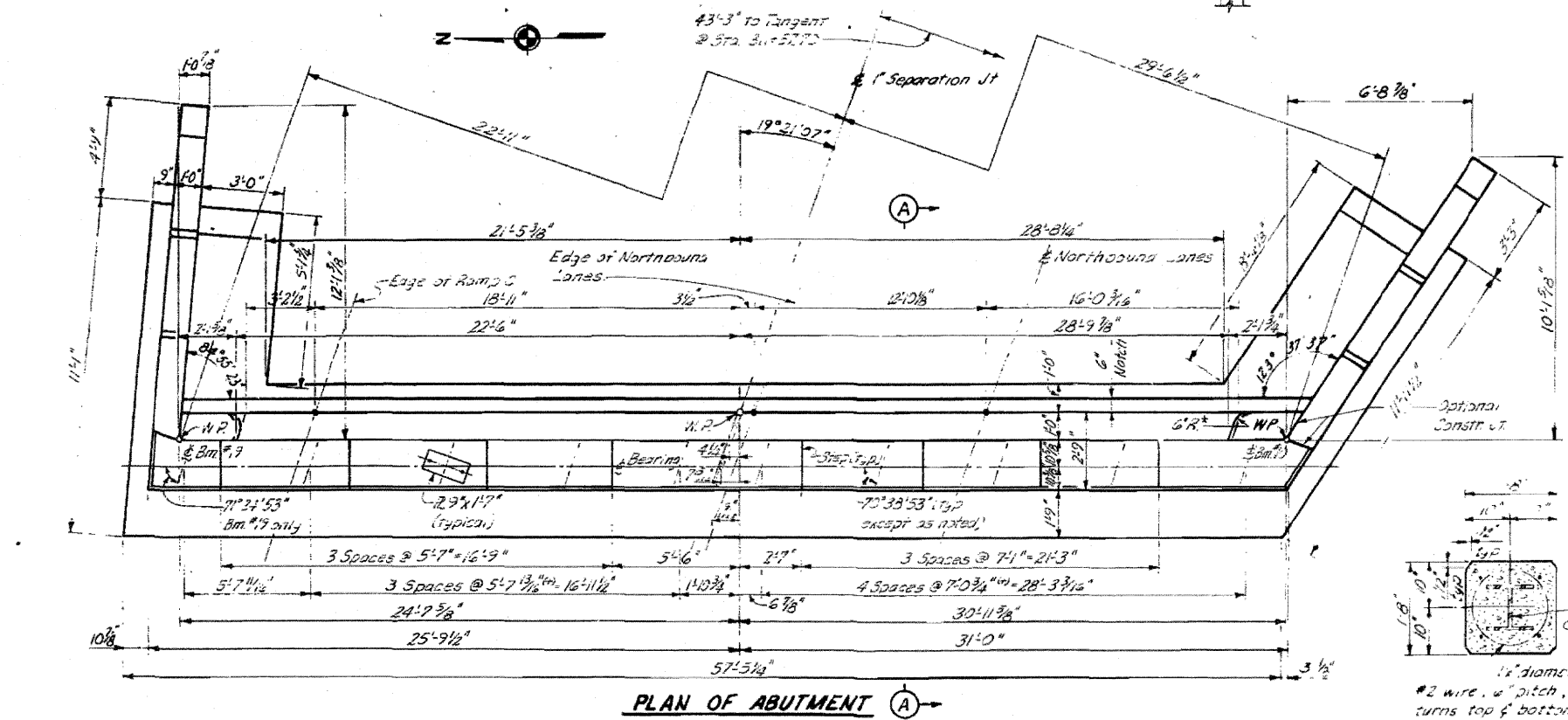
SECTION A



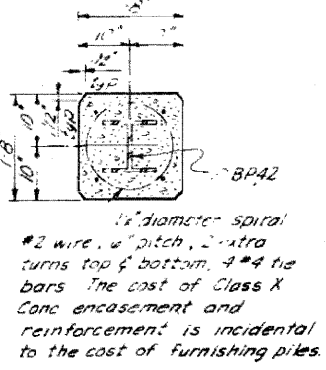
ELEVATION



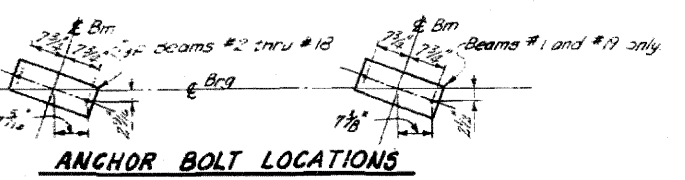
PLAN END POST



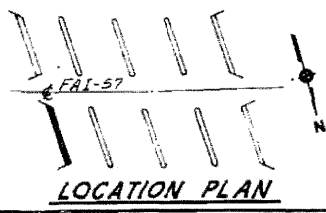
PLAN OF ABUTMENT A



SECTION D



ANCHOR BOLT LOCATIONS



LOCATION PLAN

ILLINOIS DIVISION OF HIGHWAYS
NORTH BRIDGE, EAST ABUTMENT DIMENSIONS
F.A.I.-RTE. 57 SEC. 46-2 HB
KANKAKEE COUNTY
STA. 311+37.70
Added 4-26-11

FOR INFORMATION ONLY

DESIGNED	WRT	EXAMINED	
CHECKED	LSL	ENGINEER OF BRIDGE AND TRAFFIC STRUCTURES	
DRAWN	L.S.	PASSED	
CHECKED	WRT	APPROVED	
		ENGINEER OF DESIGN	
		CHIEF HIGHWAY ENGINEER	