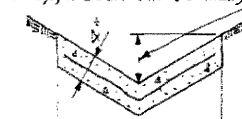


STATE OF ILLINOIS
DEPARTMENT OF PUBLIC WORKS & BUILDINGS
DIVISION OF HIGHWAYS

ROUTE NO.	SEC.	COUNTY	TOTAL SHEETS	SHEET NO.
FAI-57	46-2	KANKAKEE	46	13

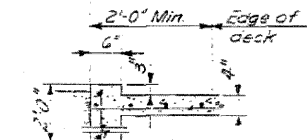
SHT. 3
OF 29

Varies to suit edge of slope wall, shoulder and approach fill. (6" Max)

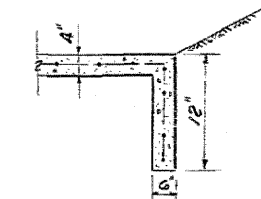


Reinforce with wire mesh weighing not less than 58 lbs. per 100 sq. ft.

PAVED DITCH
Paved ditch to be paid for as slope wall



SECTION A



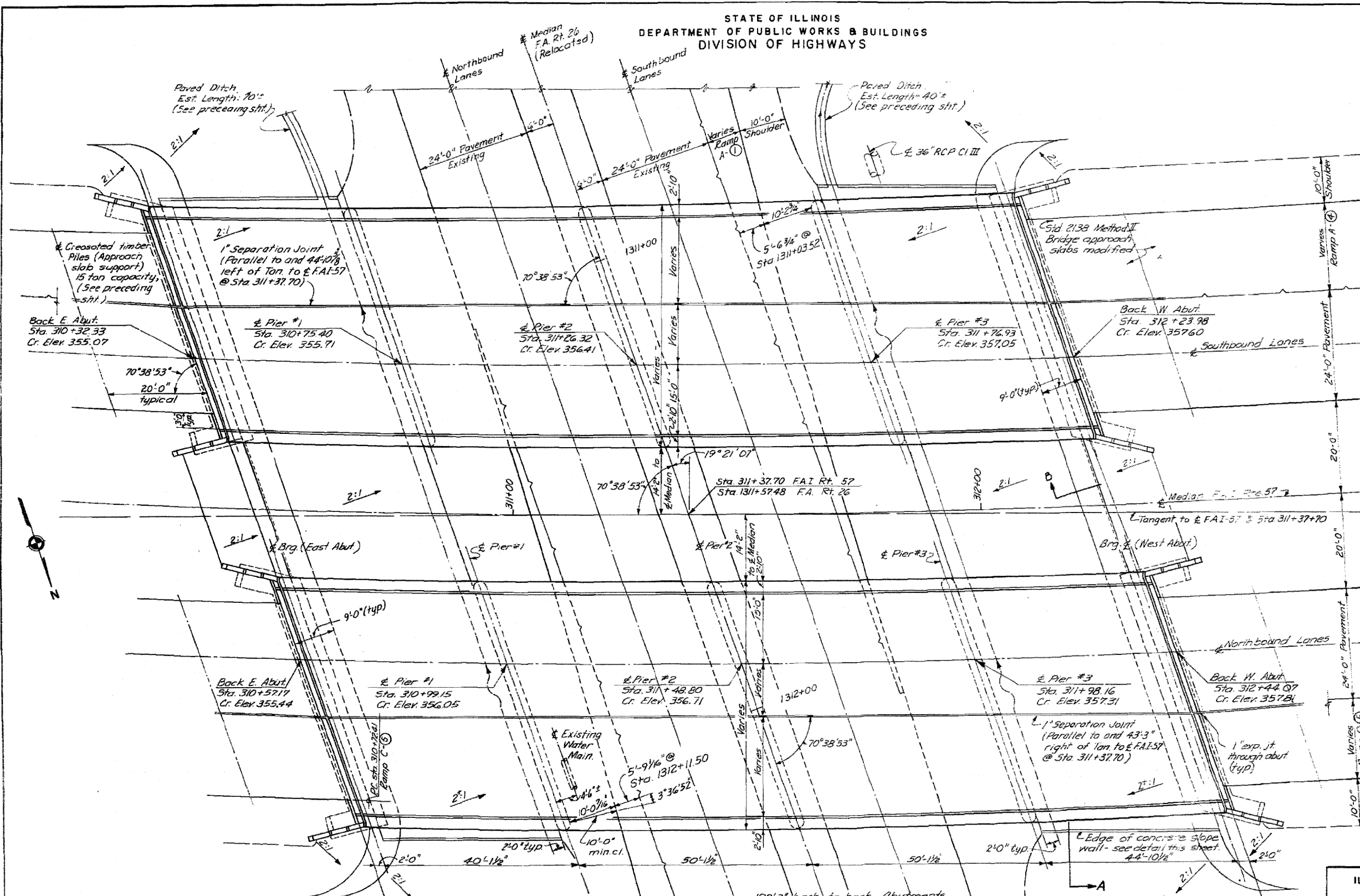
SECTION B

NOTE:
F.A.I.-57 stations and elevations shown are as projected from F.A.I.-57 profile.
For Ramp Geometrics, see Sheet 4.

ILLINOIS DIVISION OF HIGHWAYS
GENERAL PLAN
F.A.I. RTE. 57 SEC. 46-2 HB
KANKAKEE COUNTY
STA. 311 + 37.70

FOR INFORMATION ONLY

GENERAL PLAN



DESIGNED	L.J.L.	EXAMINED	ENGINEER OF BRIDGE AND TRAFFIC STRUCTURES
CHECKED	K.J.H.	PASSED	ENGINEER OF DESIGN
DRAWN	L.S.	APPROVED	CHIEF HIGHWAY ENGINEER
CHECKED	L.J.L.		

TR-CITY BLUE 100

Revised plan wall between bridges of added section B F4-83 L.S.W.

Added 4-26-11
paved ditch paid for as slope wall 2/6/85 B.W.