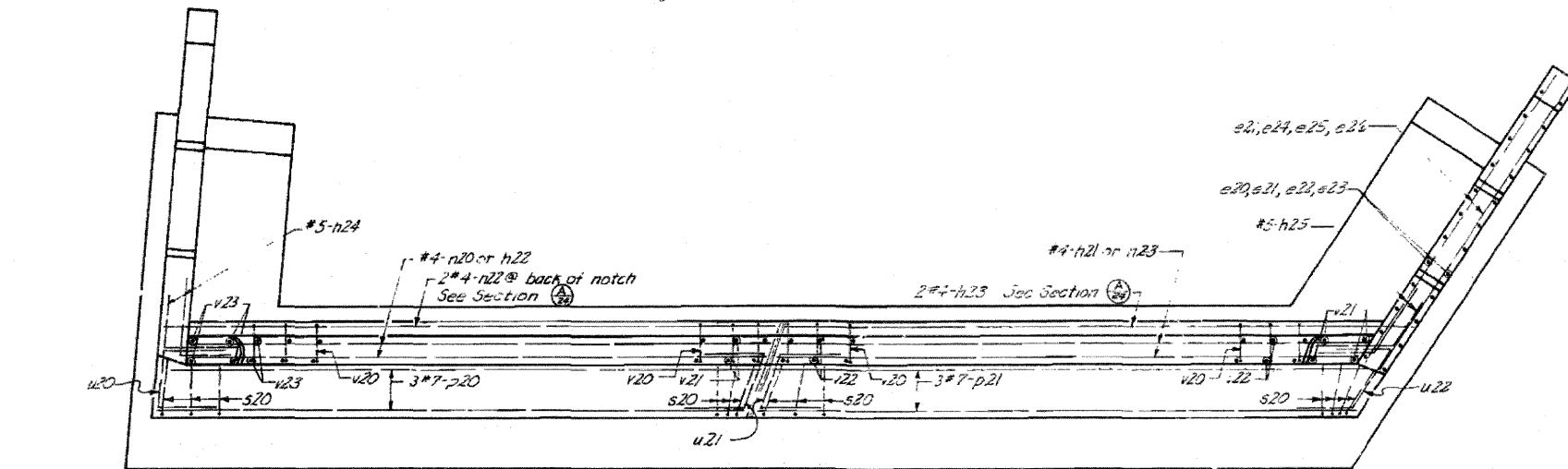
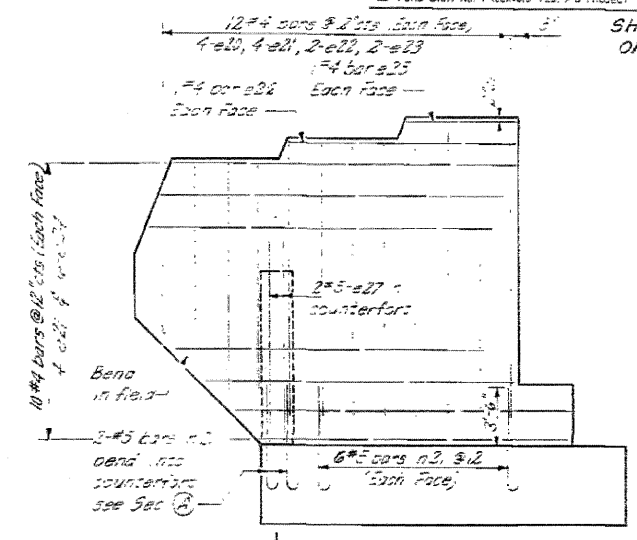
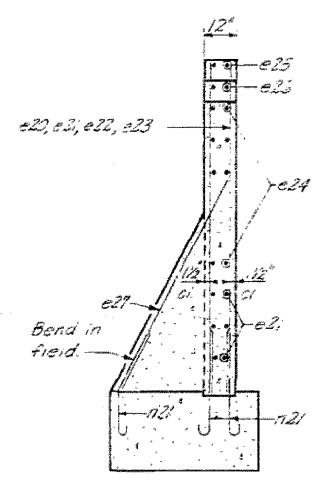
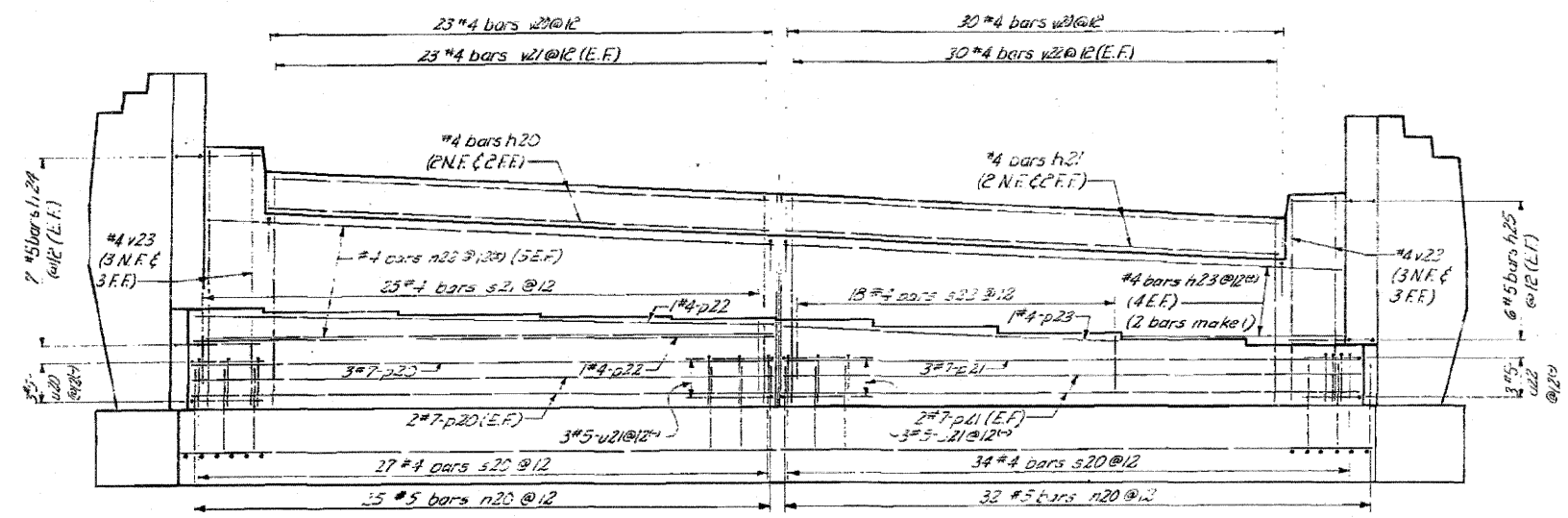
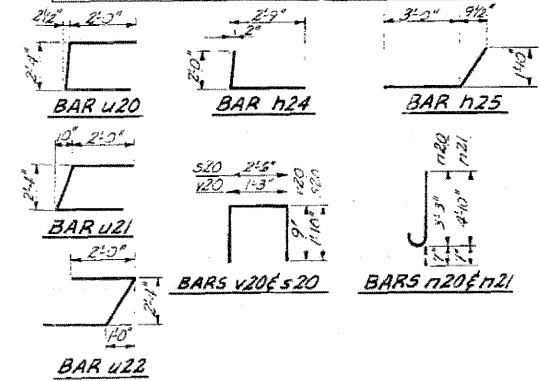
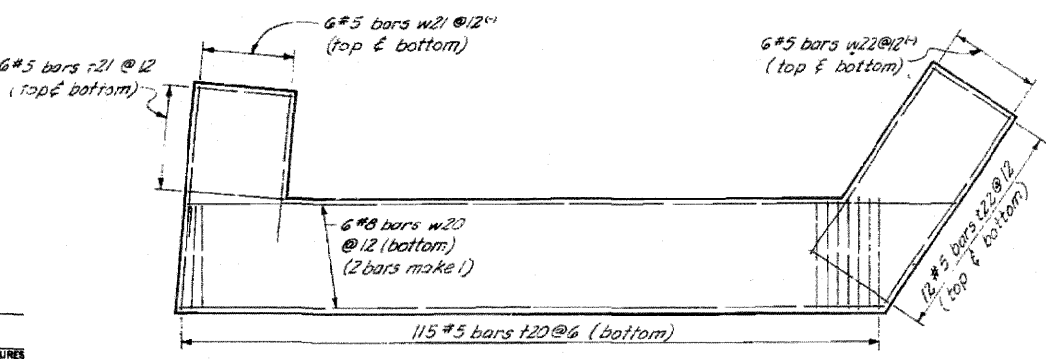
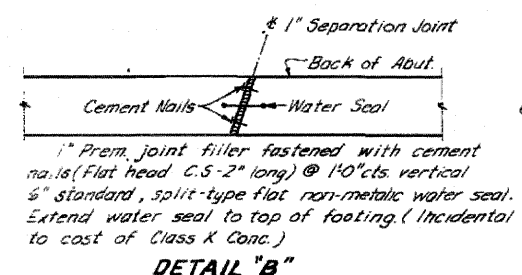


STATE OF ILLINOIS
DEPARTMENT OF PUBLIC WORKS & BUILDINGS
DIVISION OF HIGHWAYS

ROUTE NO.	SEC.	COUNTY	STA.	SHEET
EAL-57	46-2	KANKAKEE	46	35
STA.	TO STA.			
FED. ROAD DIST. NO. 7 ILLINOIS REG. P.D. PROJECT				



BAR LIST - ONE ABUTMENT										BAR LIST - TWO END POSTS									
Bar	No.	Size	Length	Shape	Bent	No.	Size	Length	Shape	Bar	No.	Size	Length	Shape	Bent				
n20	57	#5	3'-0"			e20	15	#4	3'-3"	e20	15	#4	3'-3"						
n21	28	#5	5'-10"			e21	33	#4	2'-5"	e21	33	#4	2'-5"						
p20	7	#7	24'-7"			e22	8	#4	4'-3"	e22	8	#4	4'-3"						
p21	7	#7	31'-6"			e23	8	#4	5'-0"	e23	8	#4	5'-0"						
p22	2	#4	24'-6"			e24	24	#6	10'-3"	e24	24	#6	10'-3"						
p23	1	#4	17'-3"			e25	4	#4	3'-8"	e25	4	#4	3'-8"						
s20	61	#4	6'-2"			e26	4	#4	7'-3"	e26	4	#4	7'-3"						
s21	25	#4	2'-6"			e27	4	#5	7'-0"	e27	4	#5	7'-0"						
s22	13	#4	2'-3"																



BILL OF MATERIAL			
Item	Unit	Quantity	Remarks
Class A Concrete	Cu Yds	37.6	
Reinforcement Bars	Lbs	5173	
Steel Piles (108P42)	Lin Ft	425	
Test Pile (108P12)	Each		

ILLINOIS DIVISION OF HIGHWAYS
NORTH BRIDGE, EAST ABUTMENT
REINFORCEMENT
EAL-RTE. 57 SEC. 46-2 HB
KANKAKEE COUNTY
STA. 311+37.70
Added 4-26-11

DESIGNED	WRT	EXAMINED	
CHECKED	L.J.L.	ENGINEER OF BRIDGE AND TRAFFIC STRUCTURES	
DRAWN	L.S.	PASSED	
CHECKED	WRT	ENGINEER OF DESIGN	
		APPROVED	
		CHIEF HIGHWAY ENGINEER	

FOR INFORMATION ONLY