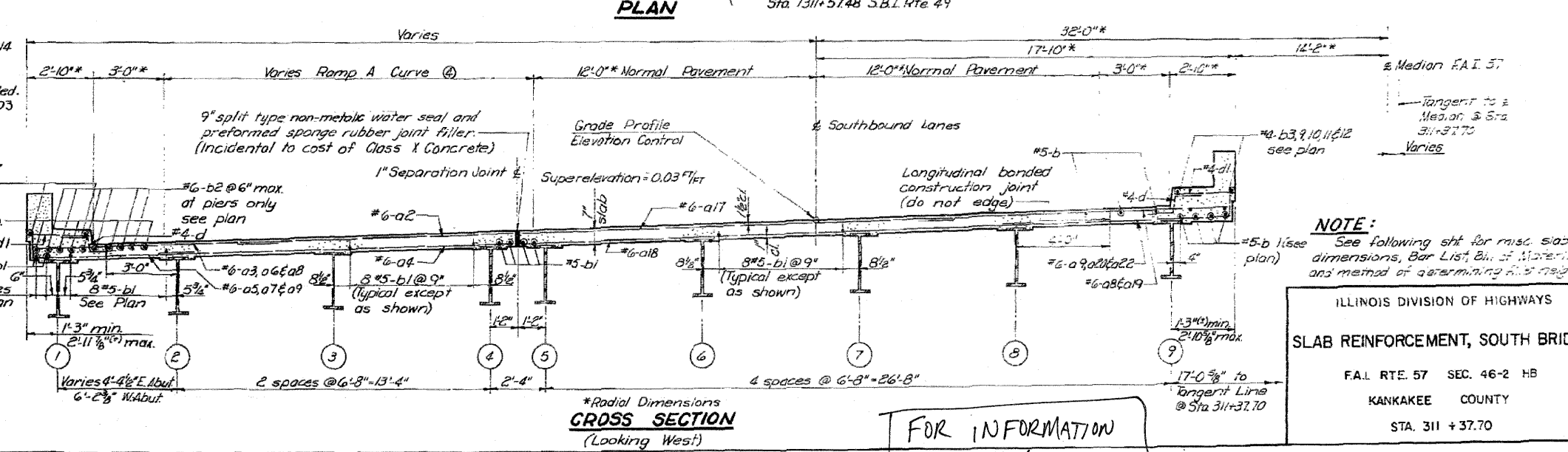
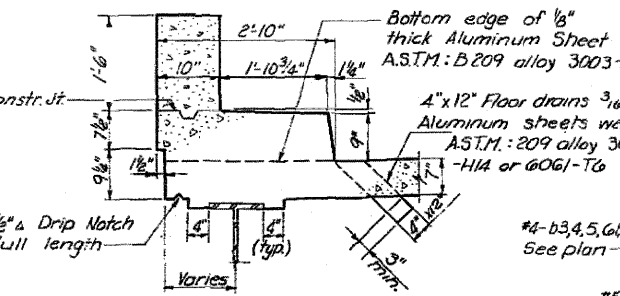
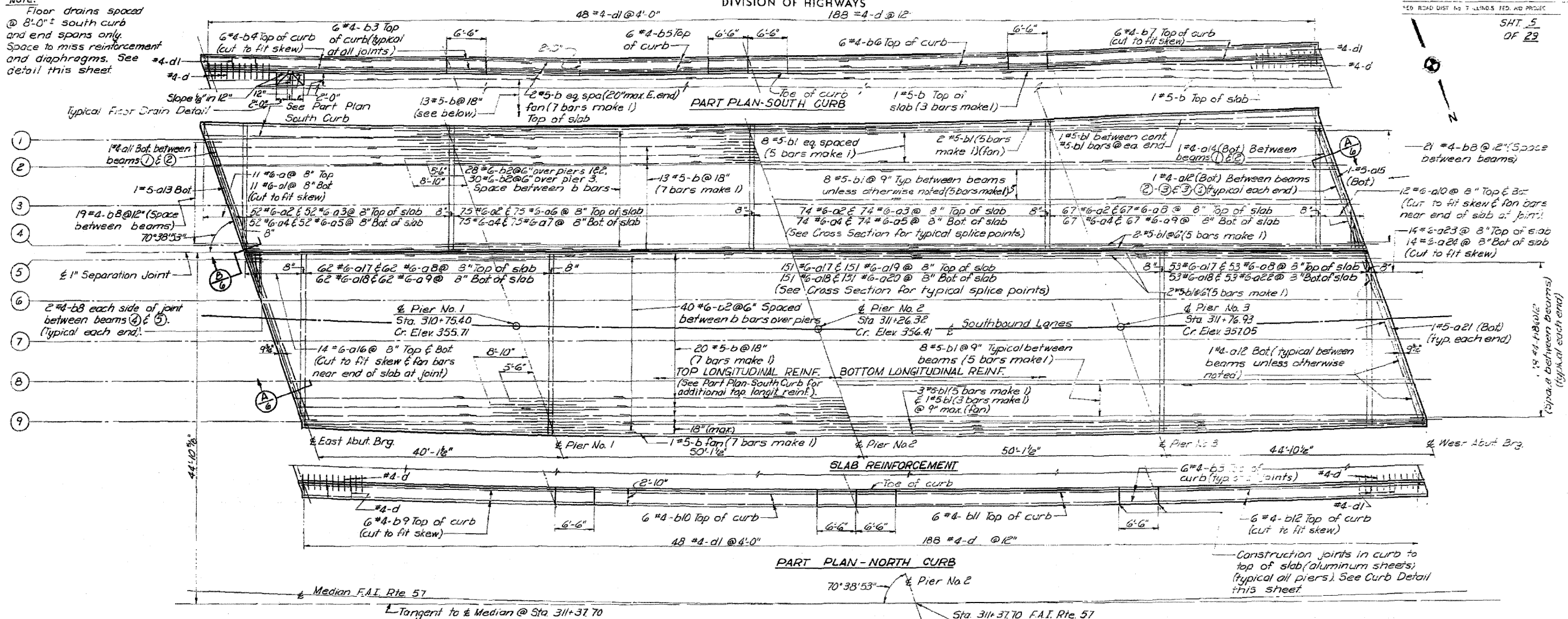


STATE OF ILLINOIS
DEPARTMENT OF PUBLIC WORKS & BUILDINGS
DIVISION OF HIGHWAYS

ROUTE NO.	SEC.	COUNTY	TOTAL SHEETS	SHEET NO.
FL. ST. 46-2	HB	KANKAKEE	46	15
STA.	TO STA.			
			SHT. 5 OF 29	

Note:
Floor drains spaced @ 8'-0" south curb and end spans only. Space to miss reinforcement and diaphragms. See #4-d1 detail this sheet.



DESIGNED	L.J.L.	EXAMINED	
CHECKED	D.N.	PASSED	
DRAWN	L.L.S.	APPROVED	
CHECKED	L.J.L.		

NOTE:
See following sheet for misc. slab dimensions, Bar List, Bill of Materials and method of determining final design.

ILLINOIS DIVISION OF HIGHWAYS
SLAB REINFORCEMENT, SOUTH BRIDGE
F.A.I. RTE. 57 SEC. 46-2 HB
KANKAKEE COUNTY
STA. 311 + 37.70

FOR INFORMATION ONLY

Revised detail #4-b1 to #5-b1, floor drains, Al. Sheets, 1-28-63 L.R.W.

Added 4-26-11