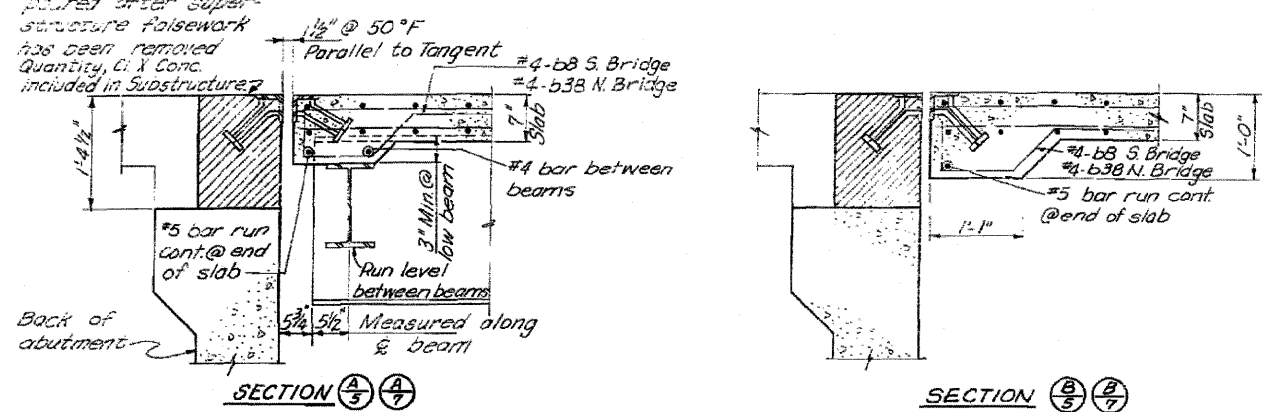


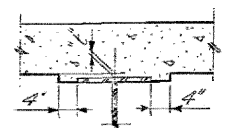
STATE OF ILLINOIS  
DEPARTMENT OF PUBLIC WORKS & BUILDINGS  
DIVISION OF HIGHWAYS

SHT 6 OF 29  
ROUTE NO. SEC. COUNTY TOTAL SHEETS SHEET NO.  
46-2 HB KANKAKEE 46 16  
FED. R.D. DIST. NO. 7 ILLINOIS FED. AID PROJECT

Spaced area to be poured after superstructure falsework has been removed. Quantity, Class X Conc. included in Substructure.



**DETAILS AT ABUTMENTS**  
See Structural Steel Details sheet for Expansion Guard Details.



**METHOD OF DETERMINING FILLET HEIGHT "t"**  
After all Structural Steel has been erected, elevations of the top flanges of the beams shall be taken at lines marked A thru U as shown on sht. 8. From these elevations subtract the increment of deflection for these points, determined from the D.L. deflection diagram. The elevations so obtained subtracted from the theoretical grade elevations, minus floor thickness, equals the fillet heights above top of beam.

**SOUTH BRIDGE SUPERSTRUCTURE BILL OF MATERIAL**

Bar No	Size	Length	Shape
a	#6	21'-3"	
a1	#6	22'-6"	
a2	#6	11'-7"	
a3	#6	11'-3"	
a4	#6	13'-0"	
a5	#6	8'-11"	
a6	#6	10'-8"	
a7	#6	21'-11"	
a8	#6	13'-0"	
a9	#6	10'-5"	
a10	#6	22'-6"	
a11	#4	4'-5"	
a12	#4	6'-10"	
a13	#5	19'-9"	
a14	#4	6'-0"	
a15	#5	21'-9"	
a16	#6	28'-0"	
a17	#6	18'-3"	
a18	#6	21'-7"	
a19	#6	13'-6"	
a20	#6	11'-3"	
a21	#5	29'-3"	
a22	#6	10'-10"	
a23	#6	29'-0"	
a24	#6	30'-11"	

**NORTH BRIDGE SUPERSTRUCTURE BILL OF MATERIAL**

Bar No	Size	Length	Shape
a30	#6	30'-0"	
a31	#6	21'-1"	
a32	#6	12'-3"	
a33	#6	12'-5"	
a34	#6	12'-6"	
a35	#6	10'-5"	
a36	#6	12'-3"	
a37	#6	12'-11"	
a38	#6	13'-0"	
a39	#6	11'-4"	
a40	#6	29'-6"	
a41	#4	6'-10"	
a42	#5	22'-3"	
a43	#6	23'-7"	
a44	#6	15'-0"	
a45	#6	10'-6"	
a46	#6	12'-3"	
a47	#6	12'-2"	
a48	#6	12'-11"	
a49	#6	12'-2"	
a50	#6	12'-5"	
a51	#6	12'-5"	
a52	#6	22'-7"	
a53	#6	24'-0"	
a54	#4	5'-6"	
a55	#4	2'-2"	
a56	#5	21'-3"	

BARS d, 5, 7, 9

21'-3"	a1
7'-10"	a5
7'-0"	a7
9'-7"	a9
15'-6"	a20
9'-7"	a22
29'-0"	a24

BARS a1, 5, 7, 9

20, 22, 24
------------

BARS a31, 35, 37

39, 47, 49, 51, 52
--------------------

BARS b8 & b38

30'-0"	b31
9'-9"	b35
9'-0"	b37
10'-3"	b39
13'-11"	b47
12'-11"	b49
11'-9"	b5
21'-6"	b52

BARS d & d30

1'-0"	d
1'-0"	d30

BARS b8 & b38

1'-3"	b8
6"	b38
10"	b38

BARS d & d30

1'-0"	d
1'-0"	d30

BARS d & d30

1'-0"	d
1'-0"	d30

**BAR DETAILS**

BARS b8 & b38

1'-3"	b8
6"	b38
10"	b38

BARS d & d30

1'-0"	d
1'-0"	d30

BARS d & d30

1'-0"	d
1'-0"	d30

BARS d & d30

1'-0"	d
1'-0"	d30

BARS d & d30

1'-0"	d
1'-0"	d30

BARS d & d30

1'-0"	d
1'-0"	d30

BARS d & d30

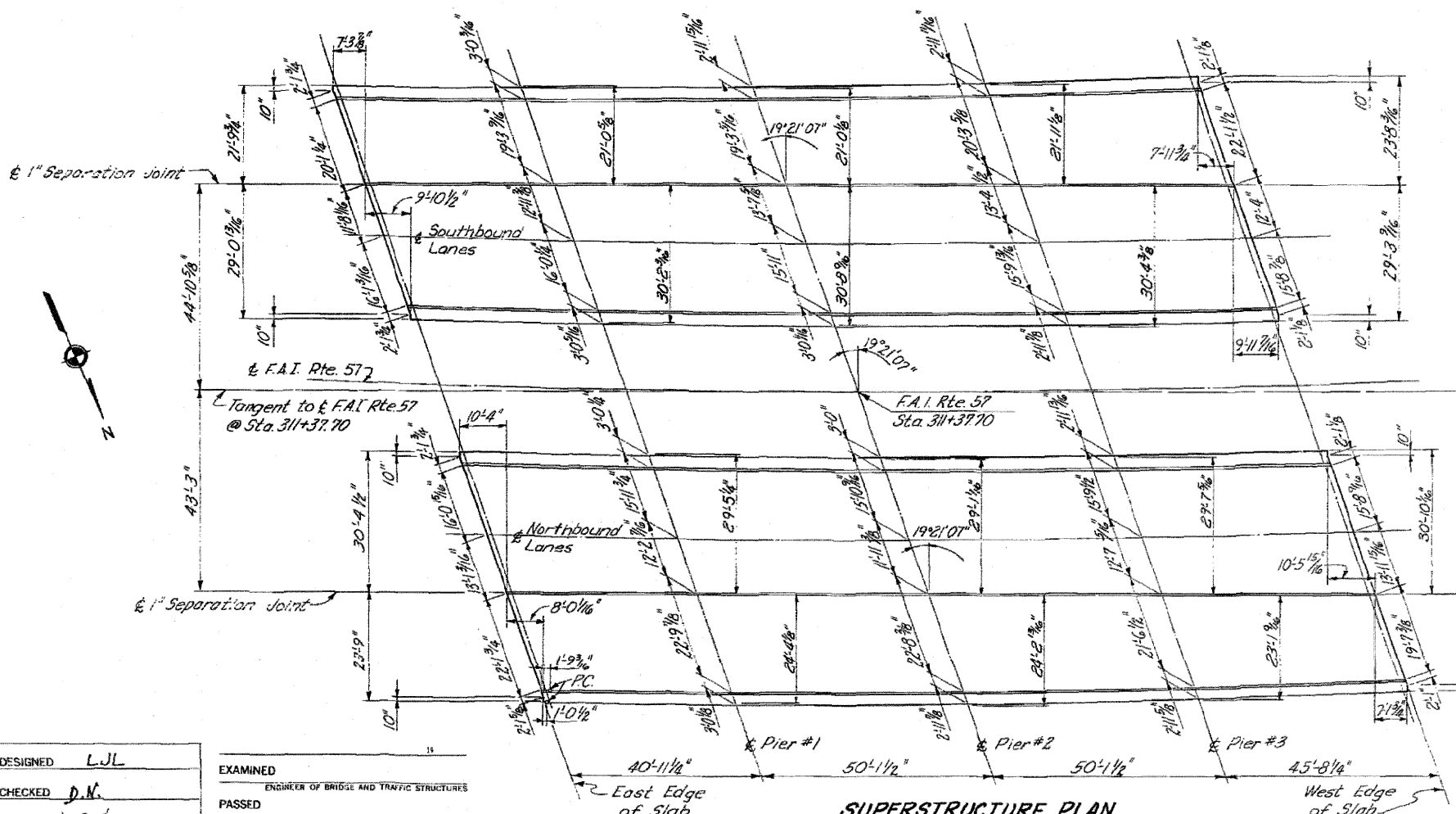
1'-0"	d
1'-0"	d30

BARS d & d30

1'-0"	d
1'-0"	d30

BARS d & d30

1'-0"	d
1'-0"	d30



**TOTAL BILL OF MATERIAL SUPERSTRUCTURE**

Class X Concrete	Cu. Yd.	533.5
Reinforcement Bars	Lbs.	162,169
Structural Steel	Lbs.	536,522
Metal Handrail	Lin. Ft.	746
Name Plates	Each	2

\*Includes parapet quantities (See Shts. 12 & 13.)

FOR INFORMATION ONLY

\*Weight of Bolsters, Rockers, Bearing Plates, Lead Plates and Anchor Bolts included as Structural Steel, Est. 1: South Bridge 12,619; Est. Wt. North Bridge 12,941.

ILLINOIS DIVISION OF HIGHWAYS  
SLAB DETAILS  
F.A.I.-RTE 57 SEC. 46-2 HB  
KANKAKEE COUNTY  
STA. 311+37.70

Added 4-26-11

DESIGNED	L.J.L.
CHECKED	D.N.
DRAWN	L.S. & L.L.S.
CHECKED	L.J.L.
EXAMINED	ENGINEER OF BRIDGE AND TRAFFIC STRUCTURES
PASSED	ENGINEER OF DESIGN
APPROVED	CHIEF HIGHWAY ENGINEER

Revised Bill of Materials to include quantities for 12-11-11 and 12-11-11. Total 12,941 lbs. 12-11-11 L.R.W.