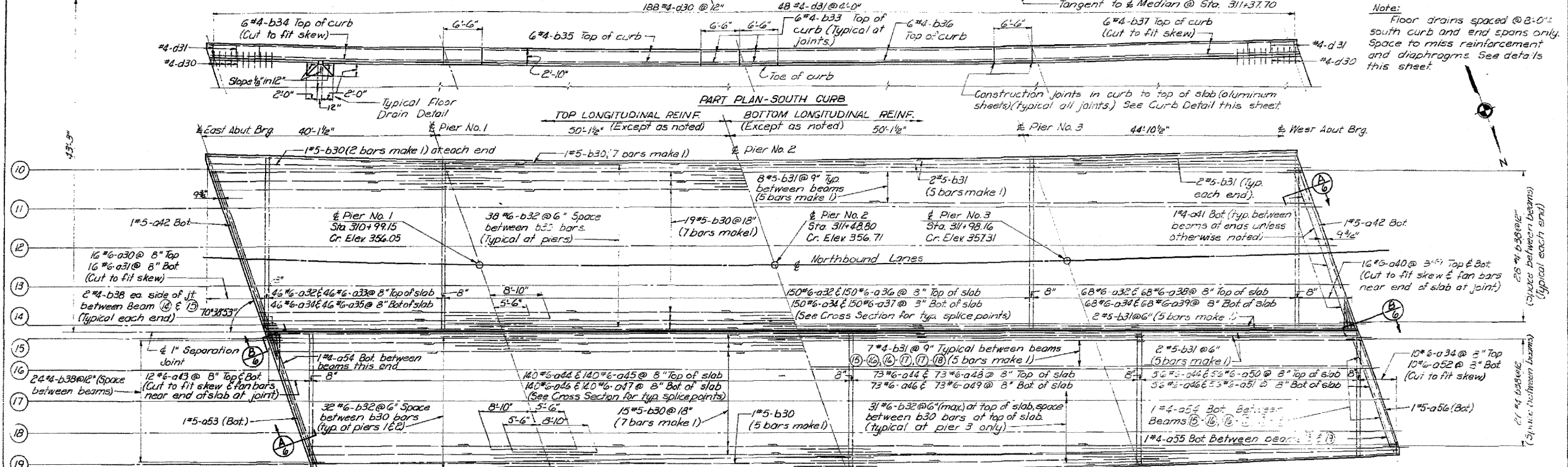
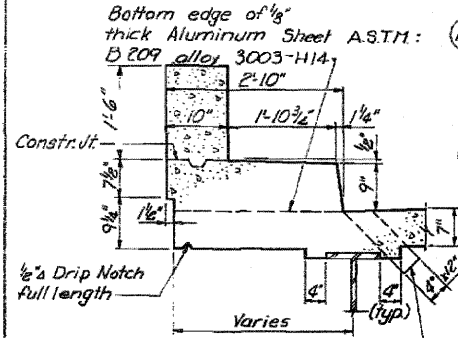
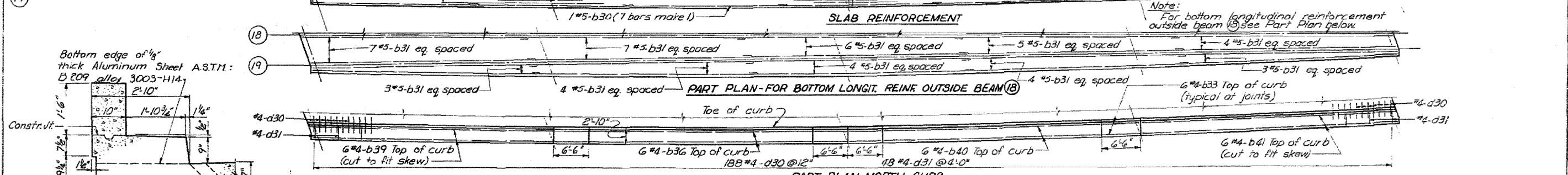


STATE OF ILLINOIS
DEPARTMENT OF PUBLIC WORKS & BUILDINGS
DIVISION OF HIGHWAYS
Sta. 311+37.70 F.A.I. Rte. 57
Sta. 1311+5748 S.B.I. Rte. 49

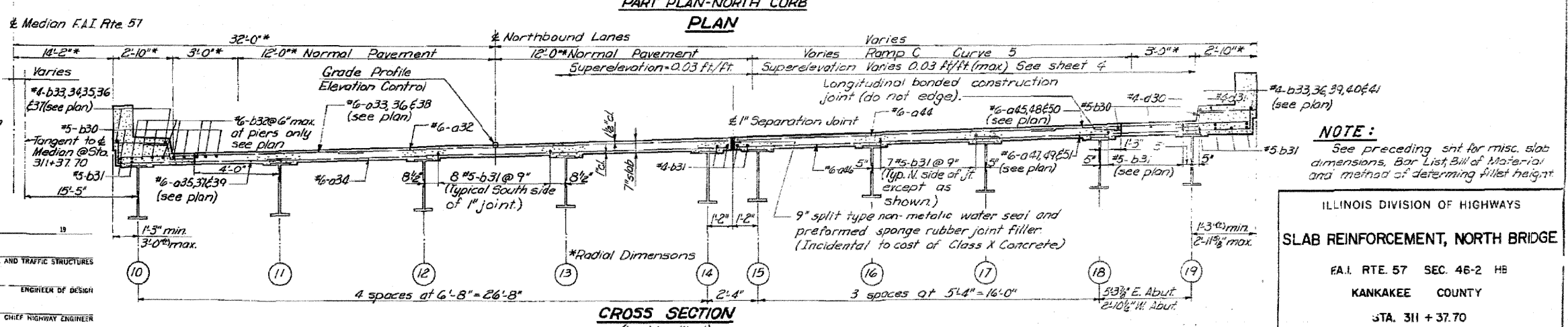
SHT. 7
OF 29
ROUTE NO. SEC. COUNTY TOTAL SHEETS SHEET NO.
F.A.I. Rte. 57 46 17
TO STA. FROM STA.
FED. ROAD DIST. NO. ILL. FED. AID PROJ. NO.



Note:
Floor drains spaced @ 8'-0" south curb and end spans only. Space to miss reinforcement and diaphragms. See details this sheet.



CURB DETAIL
See Sht. 13 for Parapet Details.



DESIGNED	L.J.L.
CHECKED	J.M.
DRAWN	L.L.S.
CHECKED	L.J.L.

EXAMINED	ENGINEER OF BRIDGE AND TRAFFIC STRUCTURES
PASSED	ENGINEER OF DESIGN
APPROVED	CHIEF HIGHWAY ENGINEER

ILLINOIS DIVISION OF HIGHWAYS
SLAB REINFORCEMENT, NORTH BRIDGE
F.A.I. RTE. 57 SEC. 46-2 HB
KANKAKEE COUNTY
STA. 311 + 37.70

FOR INFORMATION ONLY
Added 4-26-11