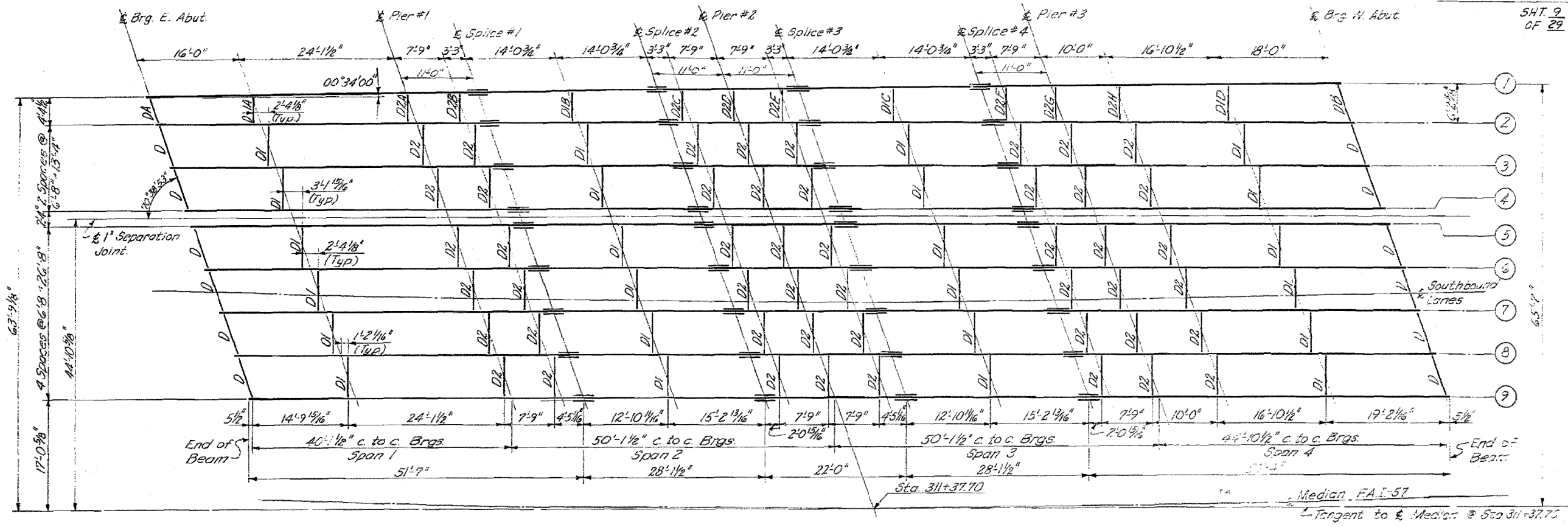


STATE OF ILLINOIS
DEPARTMENT OF PUBLIC WORKS & BUILDINGS
DIVISION OF HIGHWAYS

ROUTE NO.	SEC.	COUNTY	TOTAL SHEETS	SHEET NO.
46-2	HB	KANKAKEE	46	19
STA.	TO STA.			
			SHT. 9 OF 29	



STRUCTURAL STEEL LAYOUT - SOUTH BRIDGE

Beam #9 - 30WF124
Beams #1, #2, #3, #4, #5, #6, #7, #8 - 30WF116

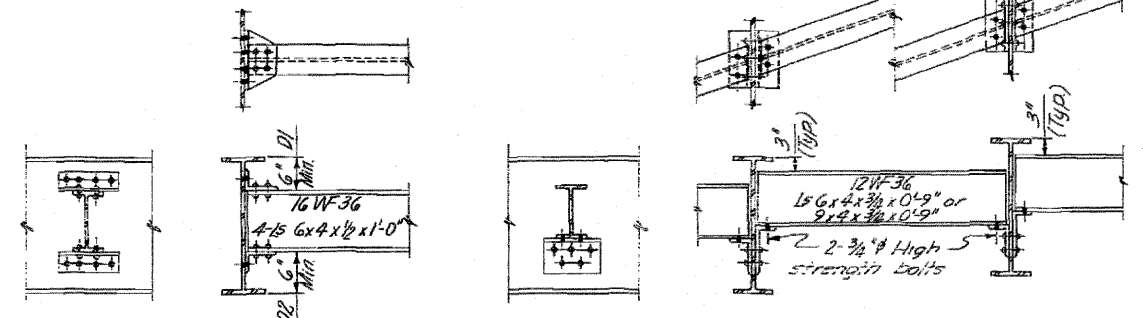
ELEVATION TOP OF BEAMS - SOUTH BRIDGE

BEAM NO.	1	2	3	4	5	6	7	8	9
Brig. East Abut.	353.448	353.004	353.823	354.081	354.164	354.402	354.699	354.876	355.113
Brig. Pier No. 1	353.963	354.115	354.354	354.592	354.675	354.913	355.150	355.387	355.624
Splice #1	354.104	354.255	354.494	354.792	354.815	355.053	355.290	355.527	355.764
Splice #2	354.436	354.699	354.872	355.110	355.193	355.431	355.668	355.905	356.142
Brig. Pier No. 2	354.632	354.777	355.016	355.254	355.337	355.575	355.812	356.049	356.286
Splice #3	354.778	354.922	355.161	355.399	355.482	355.720	355.957	360.194	356.431
Splice #4	355.140	355.282	355.521	355.759	355.842	356.080	356.317	356.554	356.791
Brig. Pier No. 3	355.289	355.429	355.668	355.906	355.989	356.227	356.464	356.701	356.938
Brig. West Abut.	355.893	356.031	356.270	356.508	356.591	356.829	357.066	357.303	357.540

**BEAMS 1 & 2
DIAPHRAGM LENGTH TABLE**

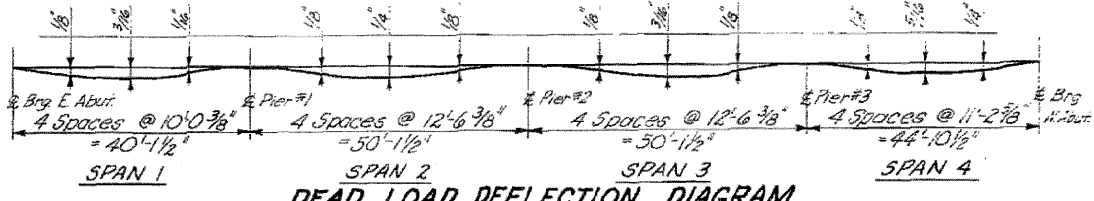
LOCATION	DIAPHRAGM LENGTH
DA	4'-7 3/8"
D1A	4'-6 7/8"
D2A	4'-9 3/8"
D2B	4'-10 1/2"
D1B	5'-0 1/2"
D2C	5'-2 1/2"
D2D	5'-3 1/2"
D2E	5'-4 3/8"
D1C	5'-3 1/2"
D2F	5'-8 1/2"
D2G	5'-9 3/8"
D2H	5'-0 3/8"
D1D	6'-0 3/8"
DB	6'-6 3/8"

Note: Lengths shown are E-E beams measured along E diaphragms.



DIAPHRAGMS D1 & D2
84- Required

DIAPHRAGM D
14- Required



DEAD LOAD DEFLECTION DIAGRAM
(Deflection due to concrete only)

NOTE:
See following list for Structural Steel Details.

DESIGNED	VNS	19
CHECKED	D.N.	ENGINEER OF BRIDGE AND TRAFFIC STRUCTURES
DRAWN	L.S.	ENGINEER OF DESIGN
CHECKED	L.J.L.	APPROVED
		CHIEF HIGHWAY ENGINEER

ILLINOIS DIVISION OF HIGHWAYS
STRUCTURAL STEEL, SOUTH BRIDGE
FAI RTE. 57 SEC. 46-2 HB
KANKAKEE COUNTY
STA. 311 + 37.70

FOR INFORMATION ONLY

Added 4-26-11