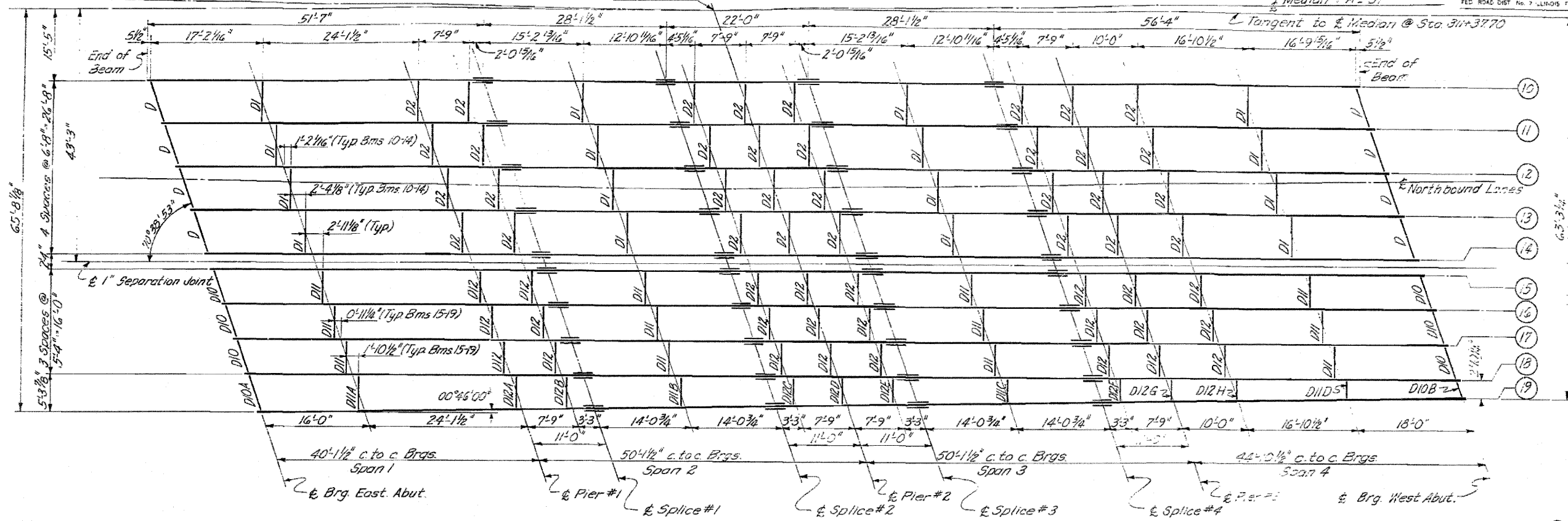


STATE OF ILLINOIS  
DEPARTMENT OF PUBLIC WORKS & BUILDINGS  
DIVISION OF HIGHWAYS

ROUTE NO.	SEC.	COUNTY	TOTAL SHEETS	SHEET
46	2	KANKAKEE	46	21
STA.	TO STA.	FED. ROAD DIST. NO. 7 ILLINOIS FED. AID PROJ.		
311+37.70				



**STRUCTURAL STEEL LAYOUT - NORTH BRIDGE**

Beam #10 - 30W124  
Beams #11, #12, #13, #14, #15, #16, #17, #18 & #19 - 30W116

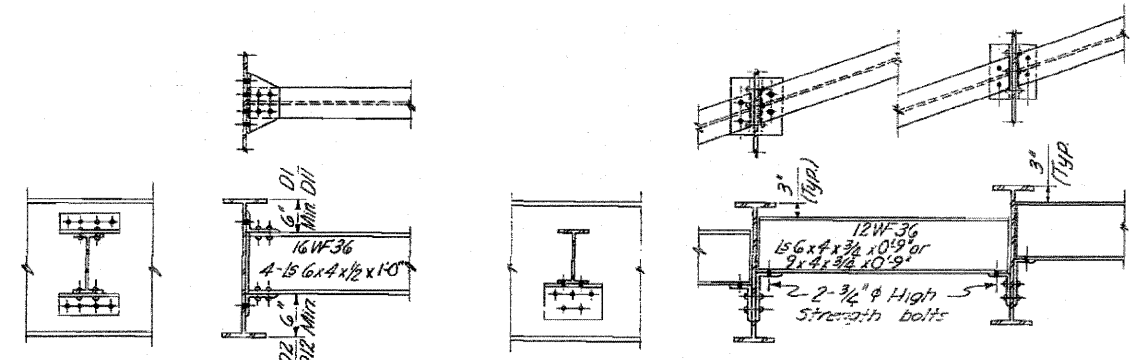
**ELEVATION TOP OF BEAMS - NORTH BRIDGE**

BEAM NO.	10	11	12	13	14	15	16	17	18	19
Brig East Abut.	352.948	352.513	352.814	355.048	355.088	355.982	355.999	355.477	355.555	355.558
Brig Pier No. 1	352.851	355.066	355.302	355.536	355.171	355.844	355.294	355.149	355.927	355.552
Brig Splice #1	354.965	355.200	355.486	355.670	355.925	355.964	355.157	355.888	355.511	355.552
Brig Splice #2	355.308	355.563	355.799	355.098	355.058	355.348	355.532	355.716	355.899	355.552
Brig Pier No. 2	355.165	355.701	355.987	355.171	355.406	355.360	355.670	355.854	357.088	357.173
Brig Splice #3	355.605	355.840	356.076	356.210	356.545	356.625	356.008	356.991	357.173	357.258
Brig Splice #4	355.952	356.187	356.423	356.657	356.892	356.071	357.159	357.894	357.515	357.587
Brig Pier No. 3	356.094	356.929	356.565	356.799	356.034	357.119	357.294	357.475	357.655	357.772
Brig West Abut.	356.872	356.909	357.145	357.979	357.614	357.692	357.871	358.050	358.229	358.325

**BEAMS 18 & 19  
DIAPHRAGM LENGTH TABLE**

LOCATION	DIAPHRAGM LENGTH
D18A	5'-7 1/2"
D18B	5'-7 1/2"
D18C	4'-9 3/4"
D18D	4'-9 3/4"
D18E	4'-2 3/4"
D18F	4'-9 3/4"
D18G	4'-9 3/4"
D18H	3'-9 1/2"
D18I	3'-9 1/2"
D18J	3'-9 1/2"
D18K	3'-9 1/2"
D18L	3'-9 1/2"
D18M	3'-9 1/2"
D18N	3'-9 1/2"
D18O	3'-9 1/2"
D18P	3'-9 1/2"
D18Q	3'-9 1/2"
D18R	3'-9 1/2"
D18S	3'-9 1/2"
D18T	3'-9 1/2"
D18U	3'-9 1/2"
D18V	3'-9 1/2"
D18W	3'-9 1/2"
D18X	3'-9 1/2"
D18Y	3'-9 1/2"
D18Z	3'-9 1/2"

Note: Lengths shown are E & W beams measured along E & W diaphragms.

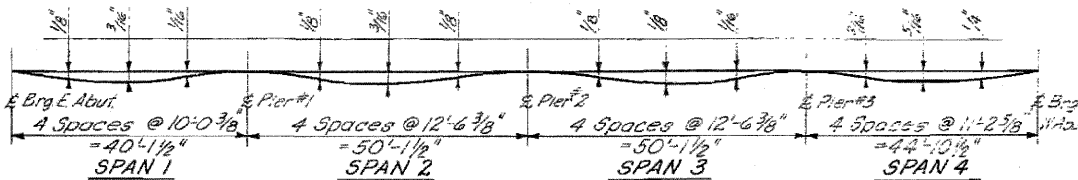


**DIAPHRAGMS D1, D2, D11 & D12**

D1 & D2: AB Required  
D11 & D12: AB Required

**DIAPHRAGMS D & D10**

D: B Required  
D10: B Required



**DEAD LOAD DEFLECTION DIAGRAM**

(Deflection due to concrete only)

**NOTE:**  
See preceding Sht. for Structural Steel Details

DESIGNED	VNS
CHECKED	J.N.
DRAWN	L.S.
CHECKED	L.J.L.

EXAMINED	ENGINEER OF BRIDGE AND TRAFFIC STRUCTURES
PASSED	ENGINEER OF DESIGN
APPROVED	CHIEF HIGHWAY ENGINEER

ILLINOIS DIVISION OF HIGHWAYS  
**STRUCTURAL STEEL, NORTH BRIDGE**  
FAI. RTE. 57 SEC. 46-2 HB  
KANKAKEE COUNTY  
STA. 311 + 37.70

FOR INFORMATION ONLY Added 4-26-11