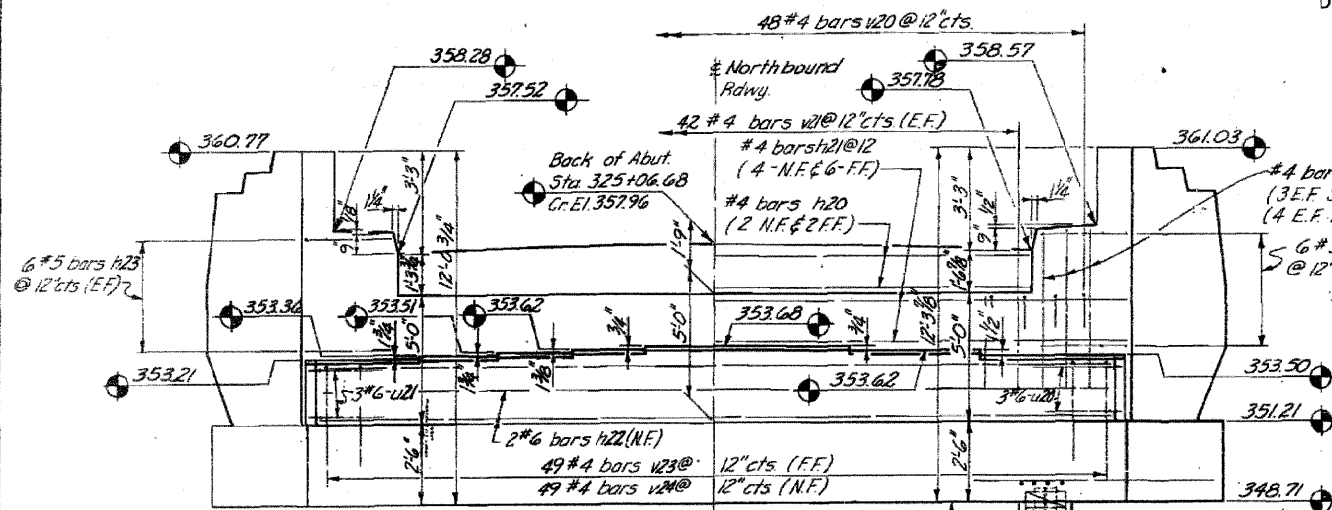
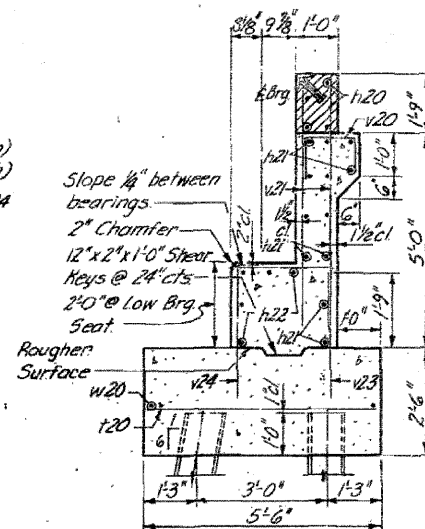


ROUTE NO.	SEC	COUNTY	TOTAL SHEETS	SHEET NO.
FAI-57	46-2VB	KANKAKEE	28	20
STA.	TO STA.			
FED ROAD DIST. No.	ILLINOIS FED AID PROJECT 75-57-7(21)7			

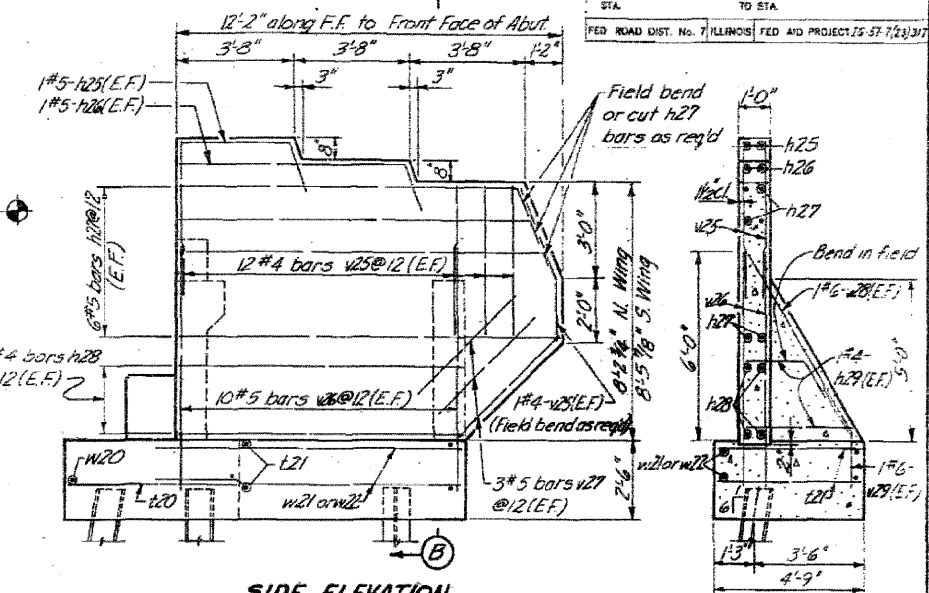


ELEVATION

At Rt. 1/2 to E Roadway

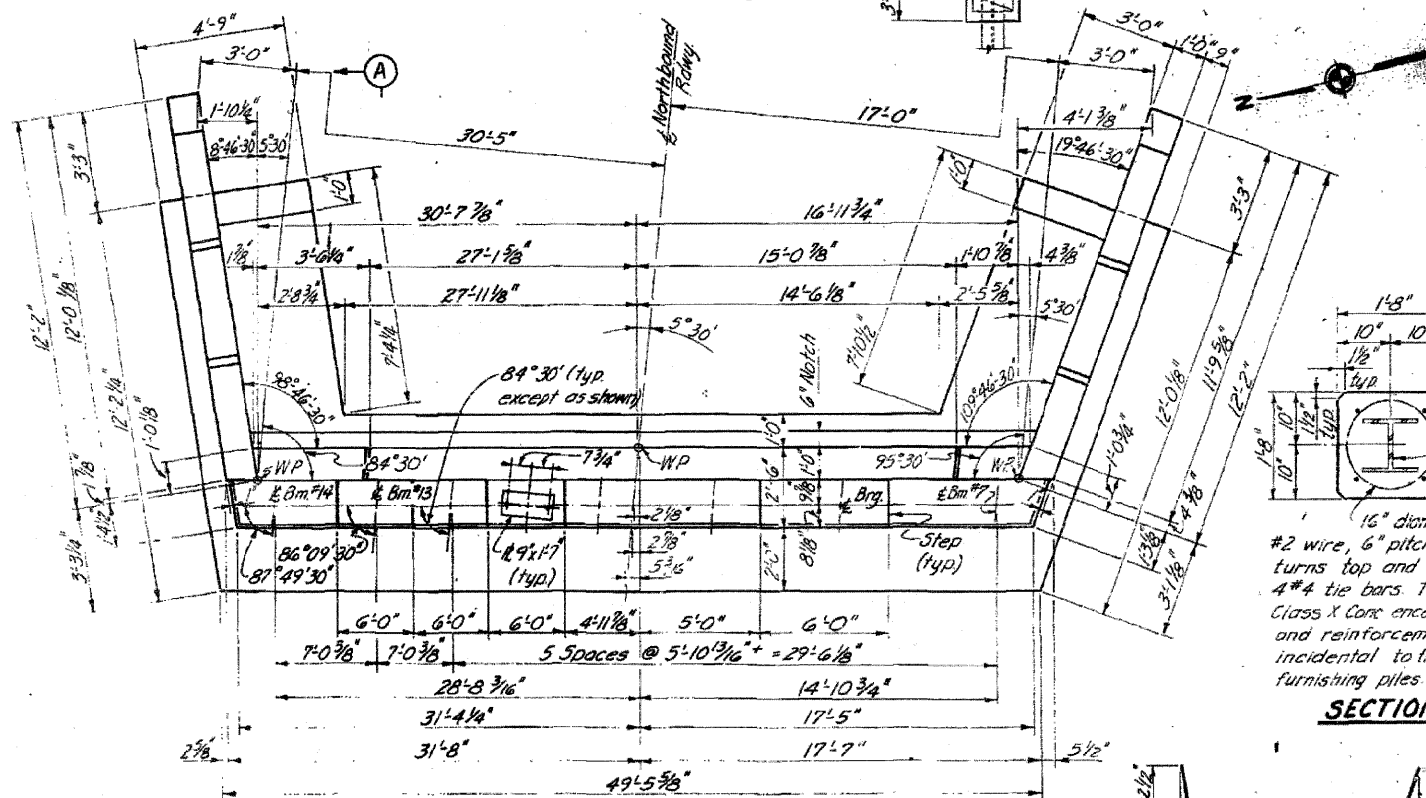


SECTION A



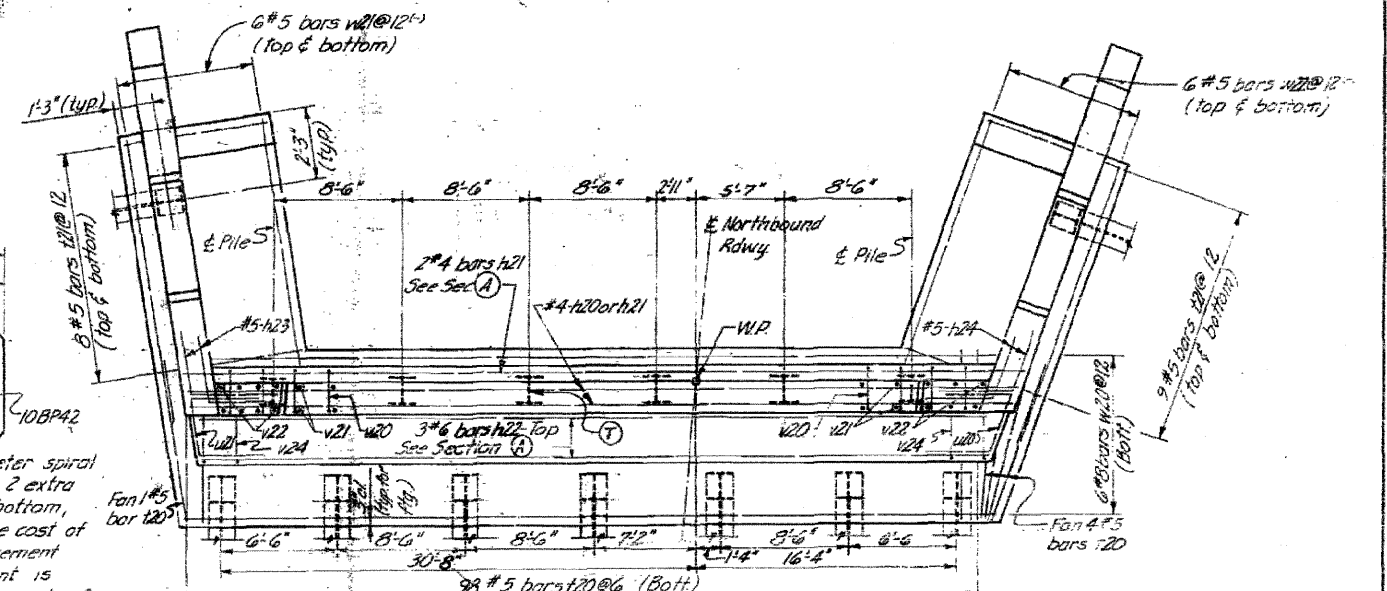
SIDE ELEVATION

SECTION B



PLAN OF ABUTMENT

Dimensions



PLAN OF ABUTMENT

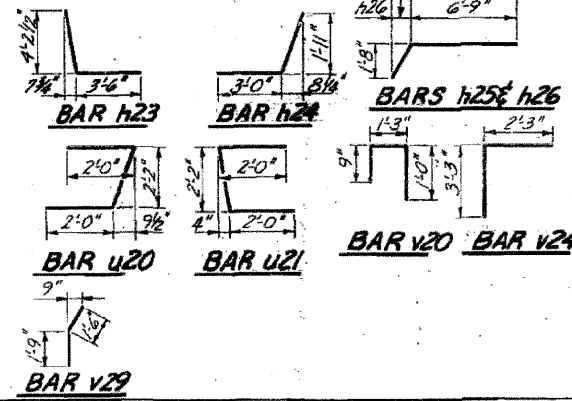
Reinforcement & Pile Spacing

BAR LIST - ONE ABUTMENT

Bar	No	Size	Length	Shape	Bar	No	Size	Length	Shape
h20	4	#4	41'-9"		v20	48	#4	3'-0"	
h21	12	#4	49'-6"		v21	84	#4	6'-0"	
h22	5	#6	48'-6"		v22	4	#4	6'-9"	
h23	12	#5	7'-9"		v23	49	#4	3'-0"	
h24	12	#5	5'-0"		v24	49	#4	5'-4"	
h25	4	#5	4'-9"		v25	52	#4	4'-9"	
h26	4	#5	8'-6"		v26	40	#5	7'-6"	
h27	24	#5	11'-9"		v27	12	#5	4'-6"	
h28	12	#4	8'-9"		v28	4	#6	7'-0"	
h29	8	#4	3'-6"		v29	4	#6	3'-3"	
u20	103	#5	5'-0"						
u21	34	#5	4'-3"		w20	6	#8	49'-0"	
					w21	12	#5	8'-9"	
					w22	12	#5	9'-3"	

PILE DATA

Type: Steel 10BP42
Capacity: 35 Tons
Estimated Length: 31'
No Req'd for 1 abut: 15 (Includes 1 Test Pile)
All abutment piling to be encased.



BILL OF MATERIAL

Item	Unit	Quantity
Class X Concrete	Cu Yd	594
Reinforcement Bars	Lbs	4590
Steel Piles (10BP42)	L.F.	434
Test Pile (Steel)	Each	1

ILLINOIS DIVISION OF HIGHWAYS
EAST ABUTMENT, NORTH BRIDGE

FAI RTE. 57 SEC. 46-2VB
KANKAKEE COUNTY
STA. 325+93.10

DESIGNED	L.J.L.	EXAMINED	
CHECKED	L.E.D.	PASSED	
DRAWN	L.S.	APPROVED	
CHECKED	L.J.L.		

FOR INFORMATION ONLY