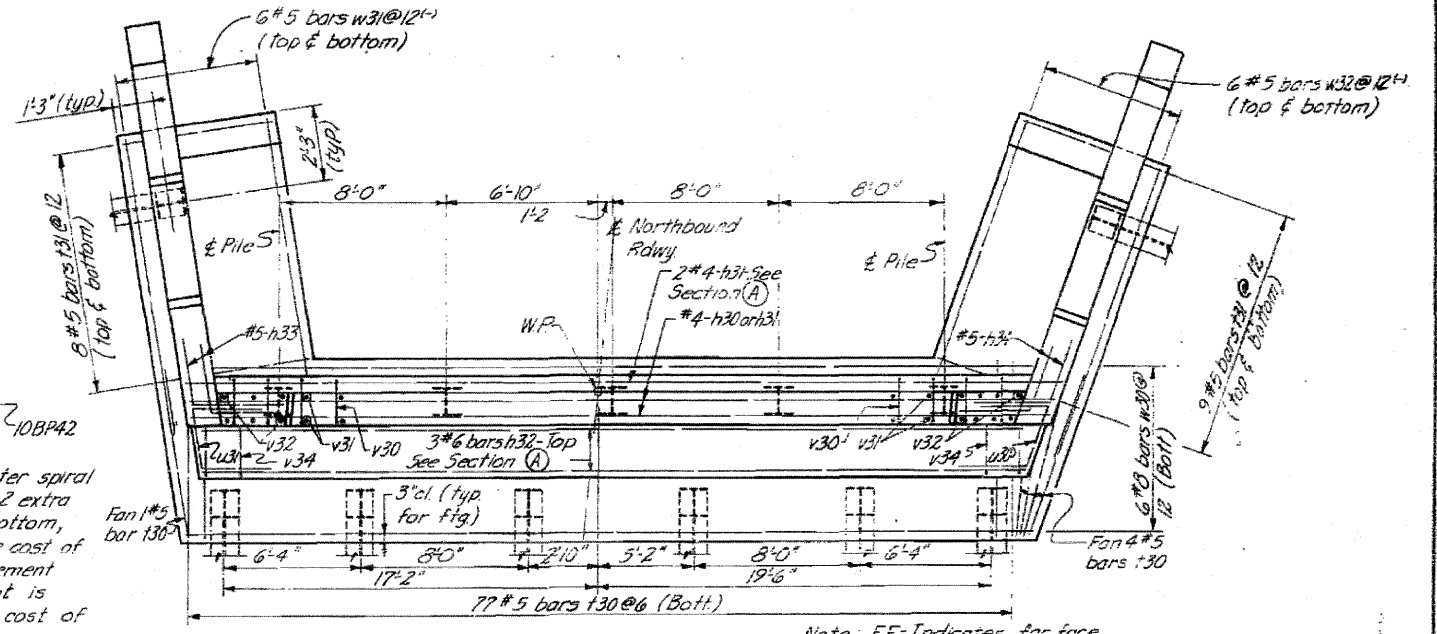
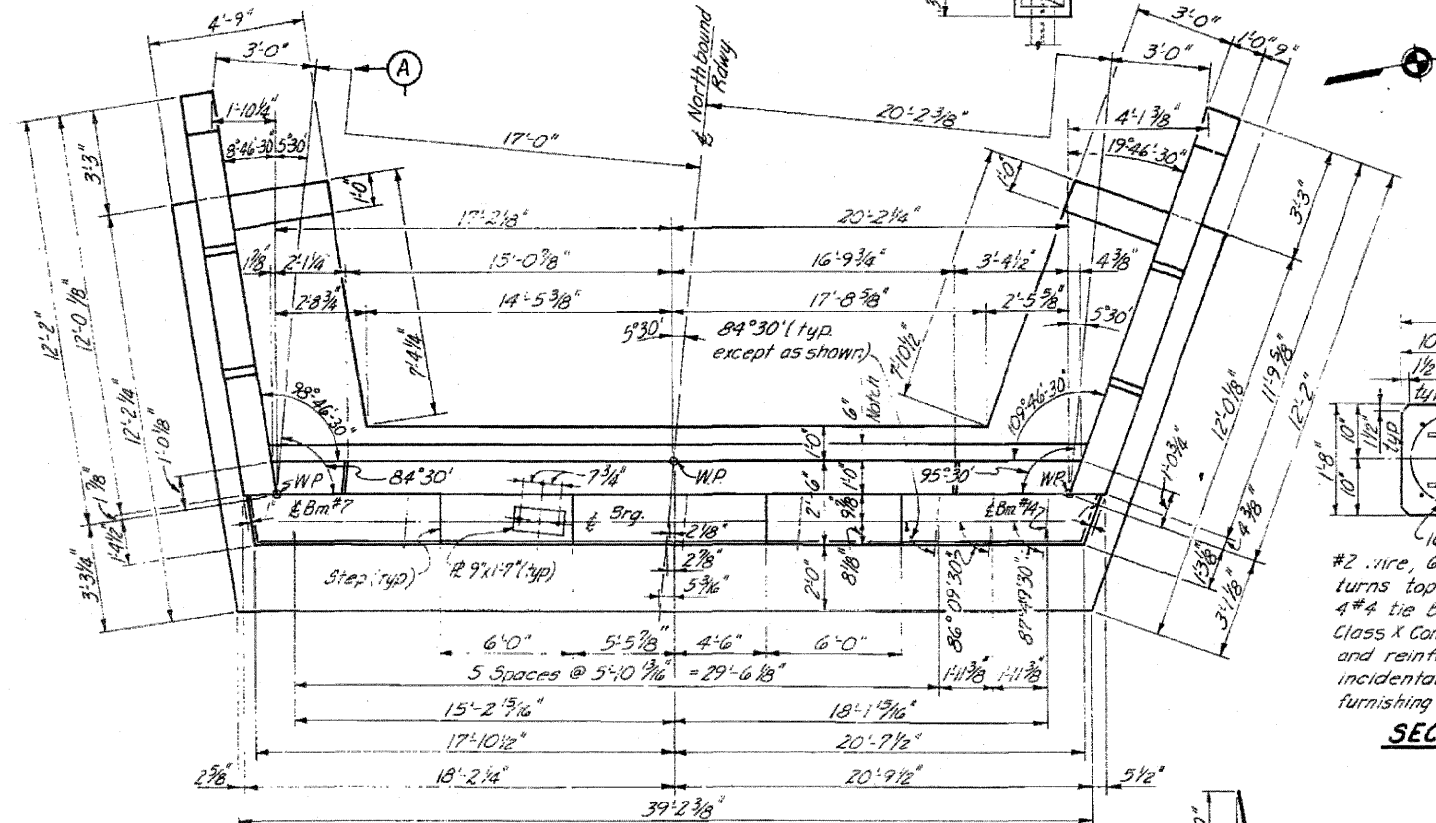
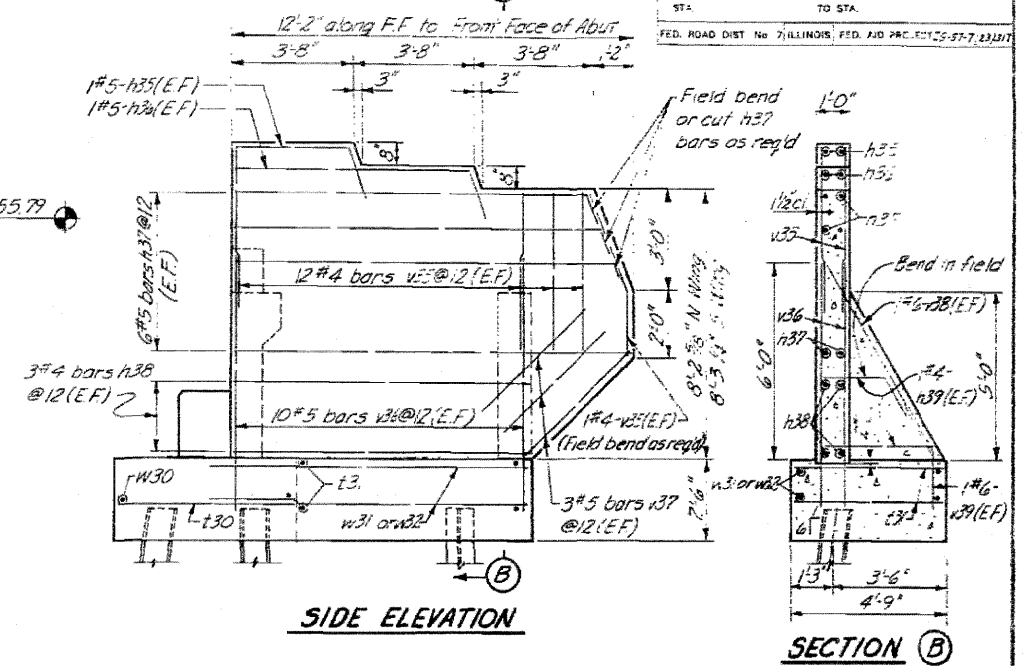
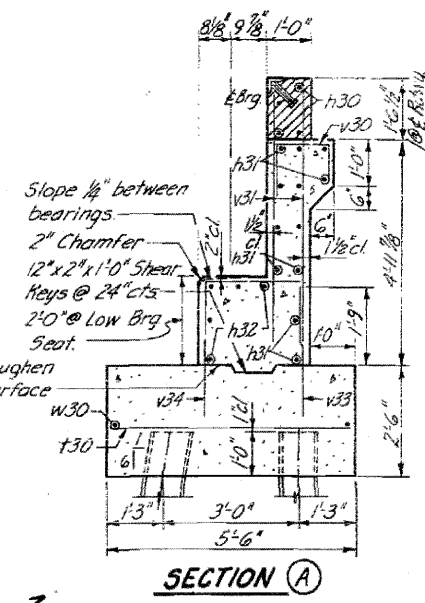
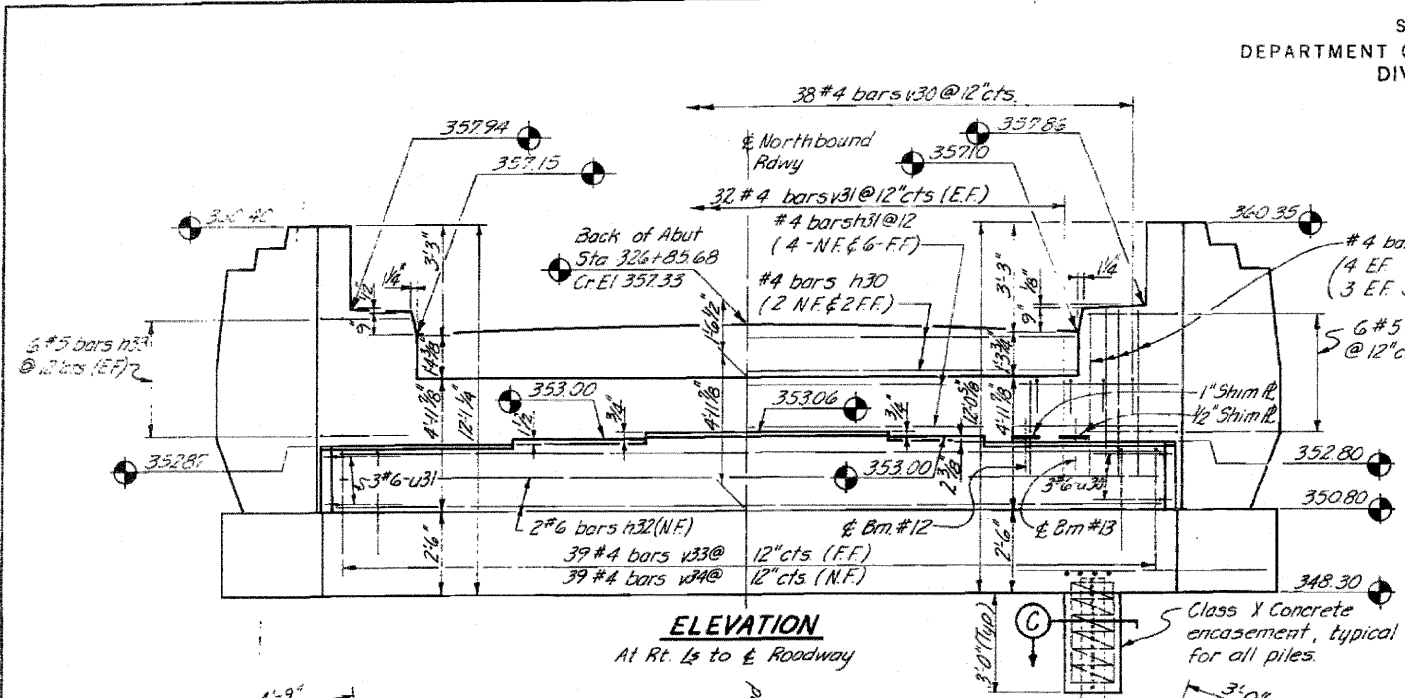
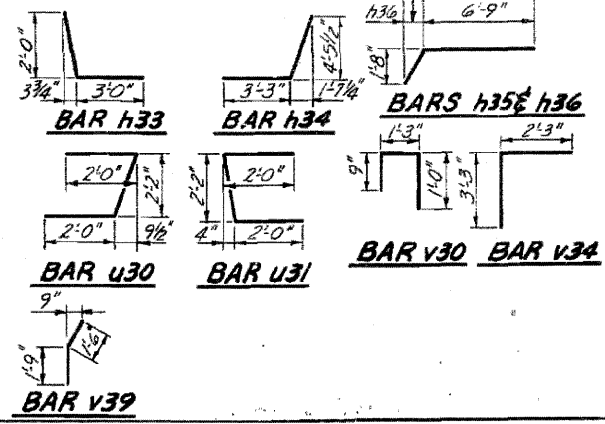


ROUTE NO.	SEC.	COUNTY	TOTAL SHEETS	SHEET NO.
74-1-57	46-2-VB	KANKAKEE	28	21
STA.	TO STA.		FED. ROAD DIST. No. ILLINOIS, FED. AID PROJ. E-125-57-7(21)11	



SECTION C



BAR LIST - ONE ABUTMENT

Bar No.	Size	Length	Shape	Bar No.	Size	Length	Shape
h30	#4	31'-6"	—	v30	#4	3'-0"	□
h31	#4	39'-3"	—	v31	#4	3'-9"	—
h32	#6	38'-3"	—	v32	#4	6'-6"	—
h33	#5	5'-0"	—	v33	#4	3'-0"	—
h34	#5	8'-0"	—	v34	#4	5'-4"	—
h35	#5	4'-9"	—	v35	#4	4'-9"	—
h36	#5	8'-6"	—	v36	#5	7'-6"	—
h37	#5	11'-9"	—	v37	#5	4'-6"	—
h38	#4	8'-9"	—	v38	#6	7'-0"	—
h39	#4	3'-6"	—	v39	#6	3'-3"	—
t30	#5	5'-0"	—	w30	#8	38'-9"	—
t31	#5	4'-3"	—	w31	#5	8'-9"	—
u30	#6	6'-4"	—	w32	#5	9'-3"	—
u31	#6	6'-3"	—				

BILL OF MATERIAL

Item	Unit	Quantity
Class X Concrete	Cu Yd	85.4
Reinforcement Bars	Lbs	3954
Steel Piles (10BP42)	Lin Ft	390

DESIGNED	L.S.	EXAMINED	
CHECKED	L.S.	PASSED	
DRAWN	L.S.	APPROVED	
CHECKED	L.S.		

PILE DATA
Type: Steel 10BP42
Capacity: 35 Tons
Estimated Length: 30'
No Req'd for 1 abut: 13
All abutment piling to be encased.

ILLINOIS DIVISION OF HIGHWAYS
WEST ABUTMENT, NORTH BRIDGE
F.A.I. RTE. 57 SEC. 46-2-VB
KANKAKEE COUNTY
STA. 325 + 93.10

FOR INFORMATION ONLY

Added 4-26-11