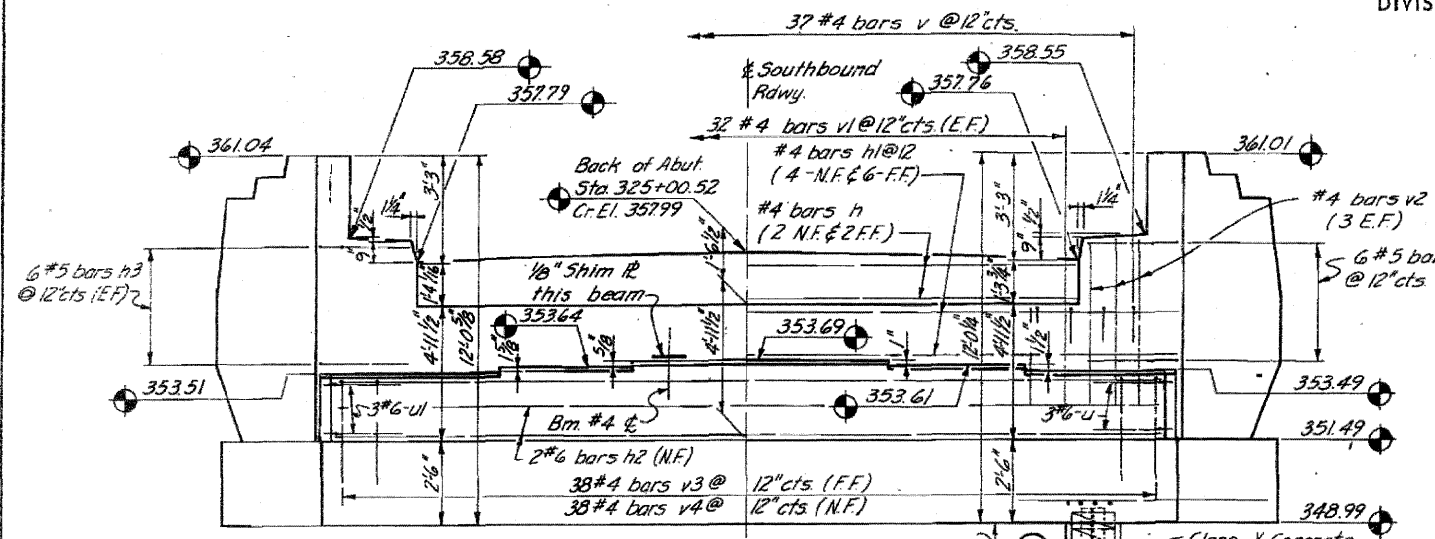
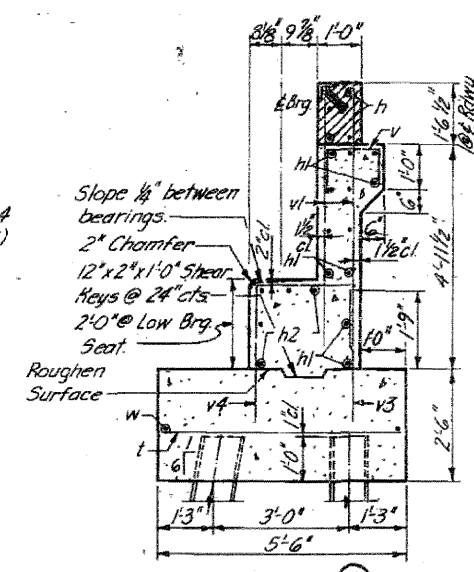


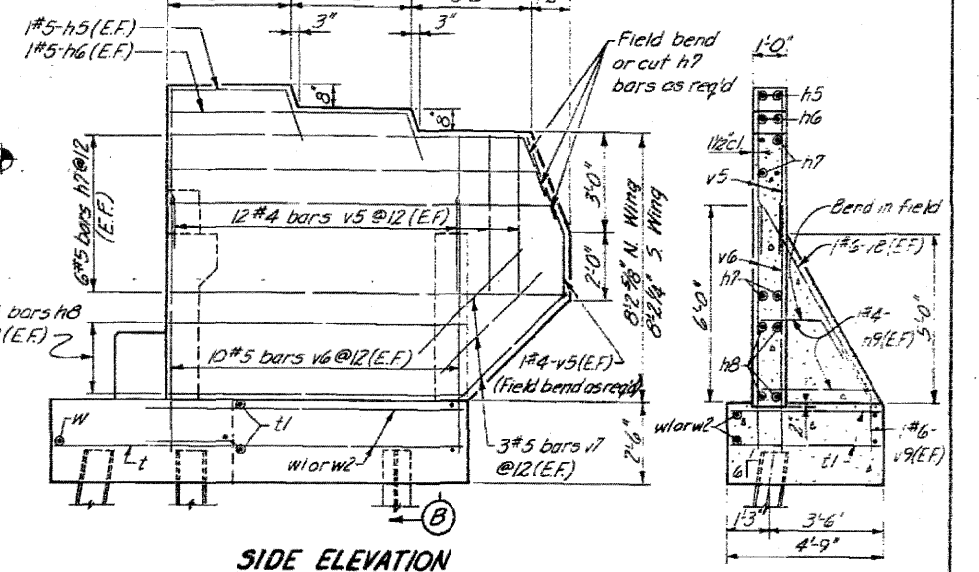
ROUTE NO.	SEC.	COUNTY	TOTAL SHEETS	SHEET NO.
EA.1-57	46-2VB	KANKAKEE	28	13
STA.	TO STA.			
FED. ROAD DIST. No. 7 ILLINOIS; FED. AID PROJ. CT. 57-2(13)				



ELEVATION
At Rt. L to E Roadway

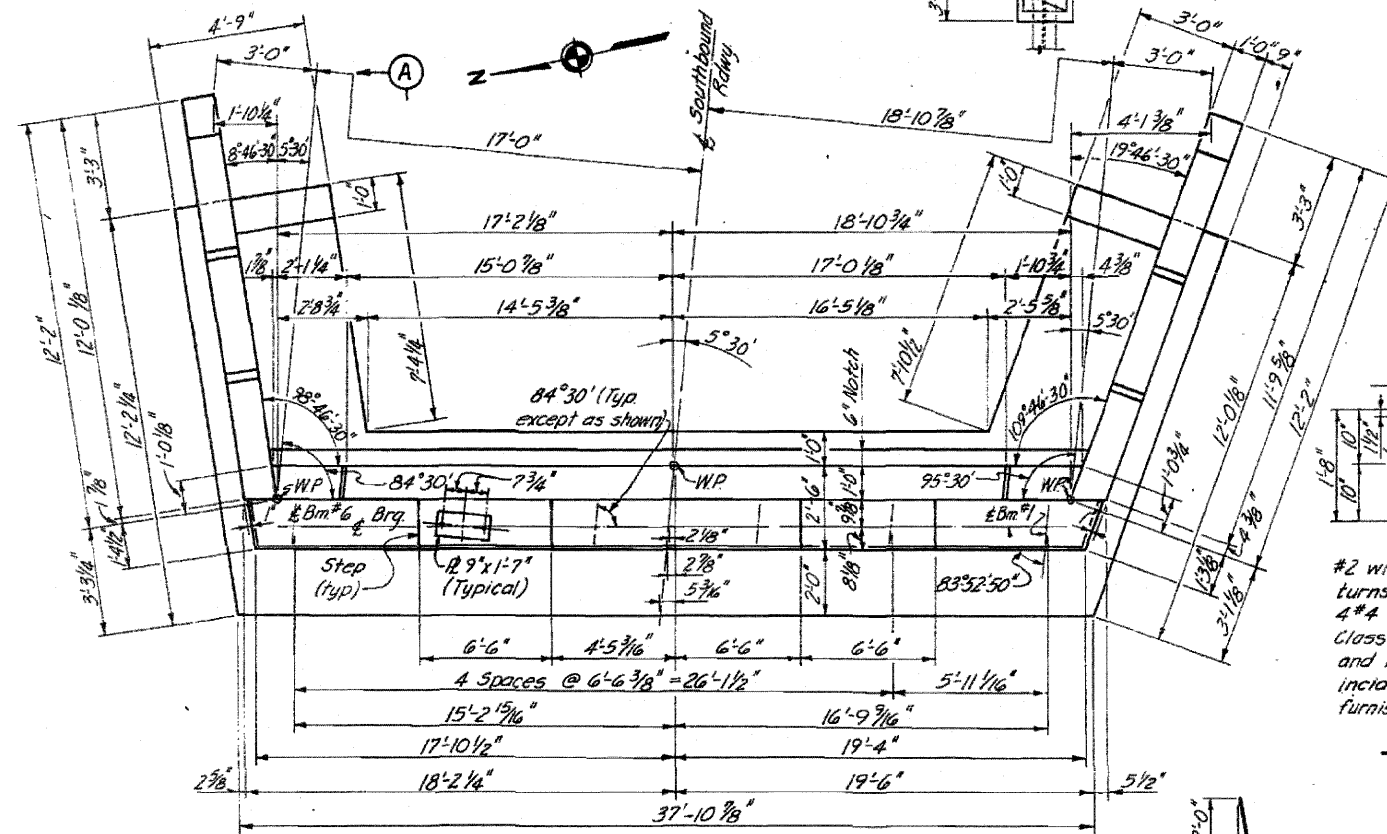


SECTION (A)



SIDE ELEVATION

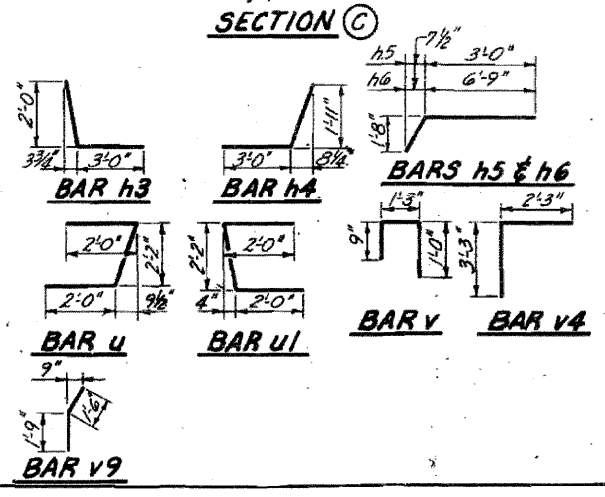
SECTION (B)



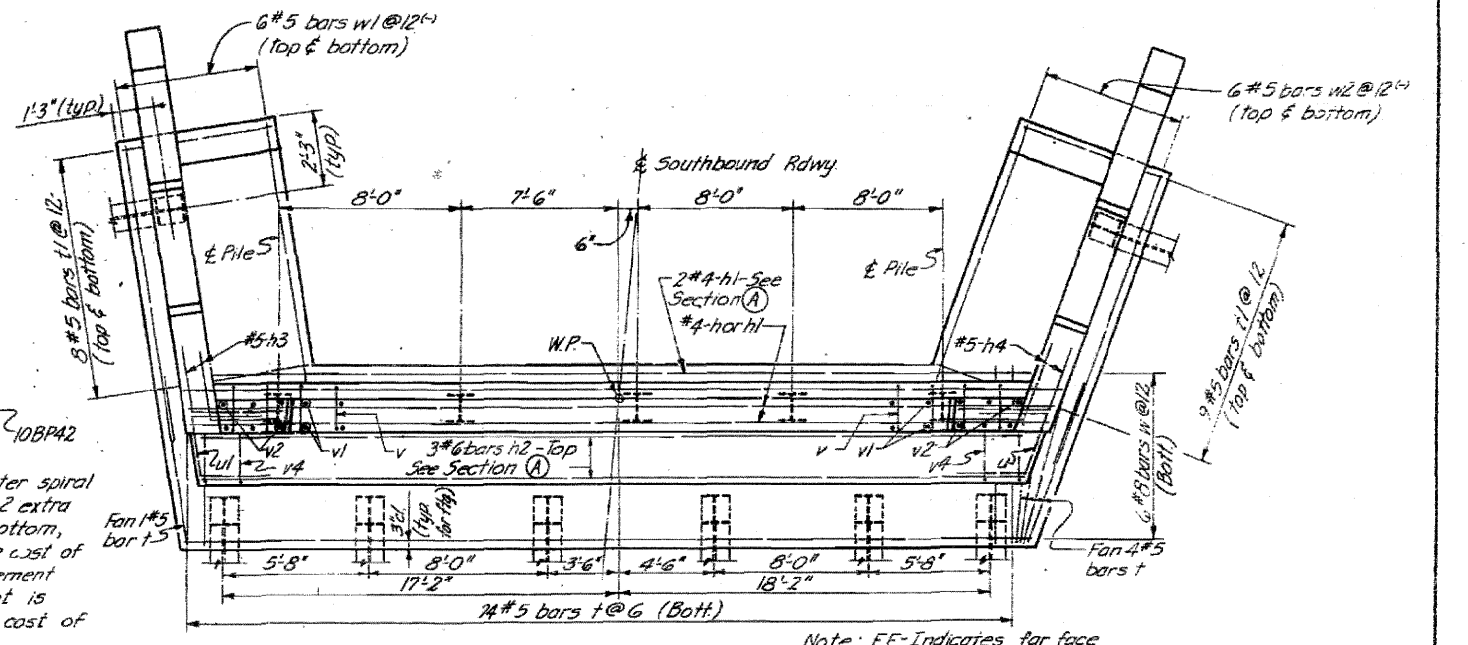
PLAN OF ABUTMENT
Dimensions

PILE DATA

Type: Steel 10BP42
Capacity: 35 Tons
Estimated Length: 33'
No Req'd for 1 abut: 13
All abutment piling to be encased.



SECTION (C)



PLAN OF ABUTMENT
Reinforcement & Pile Spacing

Note: FF Indicates far face
NF Indicates near face
EF Indicates each face

BAR LIST - ONE ABUTMENT

Bar	No.	Size	Length	Shape	Bar	No.	Size	Length	Shape
h	4	#4	31'-9"		v	37	#4	3'-0"	
h1	12	#4	37'-10"		v1	64	#4	5'-9"	
h2	5	#6	36'-9"		v2	12	#4	6'-6"	
h3	12	#5	5'-0"		v3	38	#4	3'-0"	
h4	12	#5	5'-0"		v4	38	#4	5'-4"	
h5	4	#5	4'-9"		v5	52	#4	4'-9"	
h6	4	#5	8'-6"		v6	40	#5	7'-6"	
h7	24	#5	11'-9"		v7	12	#5	4'-6"	
h8	12	#4	8'-9"		v8	4	#6	7'-0"	
h9	8	#4	3'-6"		v9	4	#6	3'-3"	
u	3	#5	5'-0"		w	6	#8	37'-3"	
u1	3	#5	4'-3"		w1	12	#5	8'-9"	
					w2	12	#5	9'-3"	

BILL OF MATERIAL

Item	Unit	Quantity
Class X Concrete	Cu Yd	42.3
Reinforcement Bars	Lbs	3849
Steel Piles (10BP42)	Lin. Ft.	439

DESIGNED	L.J.L.	EXAMINED	
CHECKED	L.E.D.	PASSED	
DRAWN	L.S.	APPROVED	
CHECKED	L.L.		

ILLINOIS DIVISION OF HIGHWAYS
EAST ABUTMENT, SOUTH BRIDGE
EA.1. RTE. 57 SEC. 46-2VB
KANKAKEE COUNTY
STA. 325 + 93.10

FOR INFORMATION ONLY