

F.A.P. RTE.	SECTION	COUNTY	TOTAL SHEETS	SHEET NO.
681	(117-BR-1)I	IROQUOIS	6	1
		ILLINOIS	CONTRACT NO. 66B24	

STATE OF ILLINOIS
DEPARTMENT OF TRANSPORTATION
DIVISION OF HIGHWAYS
PROPOSED
HIGHWAY PLANS
FAP ROUTE 681 (IL 116)
SECTION (117-BR-1)I

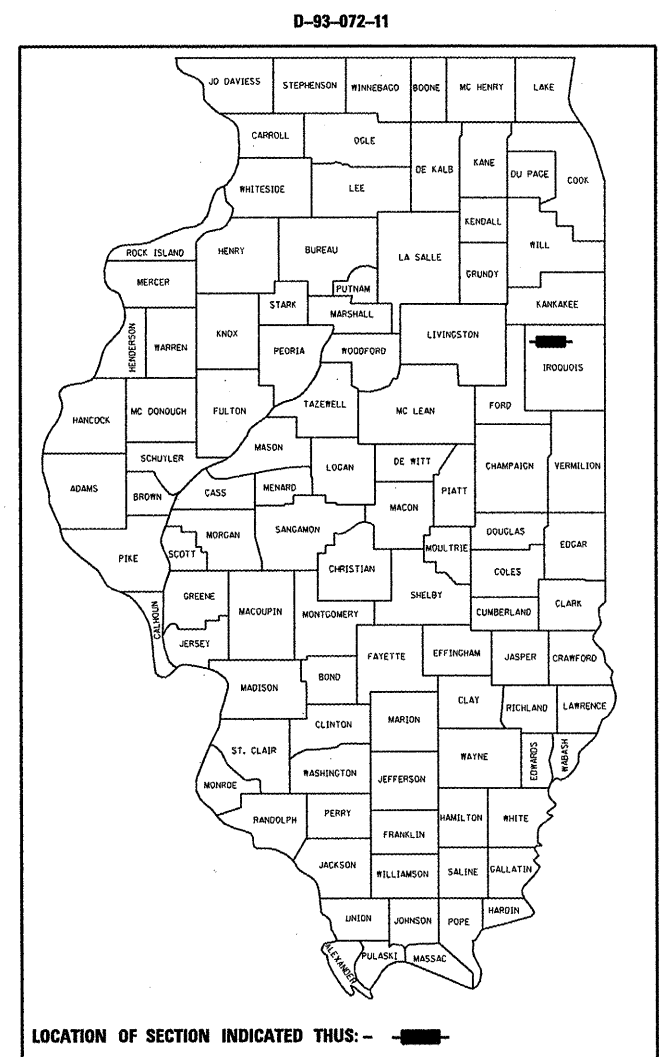
INDEX OF SHEETS

1. COVER SHEET
2. GENERAL NOTES
3. SUMMARY OF QUANTITIES
4. TYPICAL SECTION
5. GENERAL PLAN AND ELEVATION SN 038-0172
6. REPAIR DETAILS SN 038-0172

STANDARDS

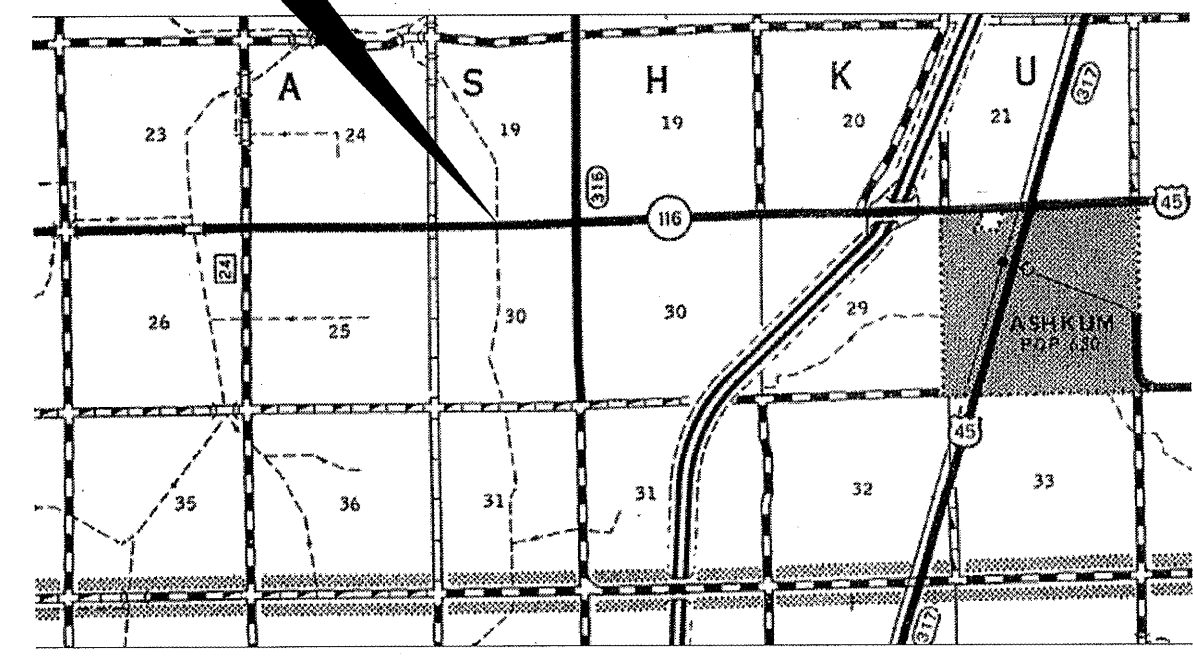
- | | |
|-----------|--|
| 000001-06 | STANDARD SYMBOLS, ABBREVIATIONS AND PATTERNS |
| 001006 | DECIMAL OF AN INCH AND OF A FOOT |
| 701001-02 | OFF-ROAD OPERATIONS 2L, 2W, MORE THAN 15' (4.5 m) AWAY |
| 701006-03 | OFF-ROAD OPERATIONS 2L, 2W, 15' (4.5 m) TO 24" (600 mm) FROM PAVEMENT EDGE |
| 701201-04 | LANE CLOSURE, 2L, 2W, DAY ONLY, FOR SPEEDS Δ 45 MPH |
| 701301-04 | LANE CLOSURE, 2L, 2W, SHORT TIME OPERATIONS |
| 701901-01 | TRAFFIC CONTROL DEVICES |

BRIDGE REPAIR
S.N. 038-0172
FAP ROUTE 681 (IL 116) OVER
AN UNNAMED CREEK
2.15 MILES WEST OF I-57 (ASHKUM)
IROQUOIS COUNTY
C-93-090-11

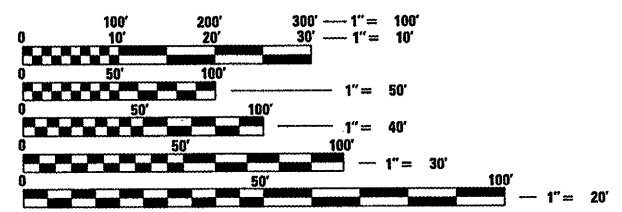


FUNCTIONAL CLASSIFICATION
RURAL - MINOR ARTERIAL
FAP RTE. 681 (IL 116)
2009 ADT 1400
P.V. 76.79%
S.U. 10.71%
M.U. 12.50%

PROJECT LOCATION



LOCATION MAP - NOT TO SCALE
POINT LOCATION



FULL SIZE PLANS HAVE BEEN PREPARED USING STANDARD ENGINEERING SCALES. REDUCED SIZED PLANS WILL NOT CONFORM TO STANDARD SCALES. IN MAKING MEASUREMENTS ON REDUCED PLANS, THE ABOVE SCALES MAY BE USED.

J.U.L.I.E.
JOINT UTILITY LOCATION INFORMATION FOR EXCAVATION
1-800-892-0123
OR 811

PROJECT ENGINEER: JOE KANNEL P.E.
UNIT CHIEF: RON WOODSHANK
TOWNSHIP: ASHKUM
CONTRACT NO. 66B24

STATE OF ILLINOIS
DEPARTMENT OF TRANSPORTATION
DIVISION OF HIGHWAYS

SUBMITTED 02/25 20 11
Eric S. Thacker
DEPUTY DIRECTOR OF HIGHWAYS, REGION ENGINEER

March 05 20 11
Scott E. Stitt P.E.
Acting ENGINEER OF DESIGN AND ENVIRONMENT

March 25 20 11
Christine M. Reed
DIRECTOR OF HIGHWAYS, CHIEF ENGINEER

PRINTED BY THE AUTHORITY
OF THE STATE OF ILLINOIS

GENERAL NOTES

PLAN DIMENSIONS AND DETAILS RELATIVE TO EXISTING PLANS ARE SUBJECT TO NOMINAL CONSTRUCTION VARIATIONS. THE CONTRACTOR SHALL FIELD VERIFY EXISTING DIMENSIONS AND DETAILS AFFECTING NEW CONSTRUCTION AND MAKE NECESSARY APPROVED ADJUSTMENTS PRIOR TO CONSTRUCTION OR ORDERING OF MATERIALS. SUCH VARIATIONS SHALL NOT BE CAUSE FOR ADDITIONAL COMPENSATION FOR A CHANGE IN SCOPE OF THE WORK; HOWEVER, THE CONTRACTOR WILL BE PAID FOR THE QUANTITY ACTUALLY FURNISHED AT THE UNIT PRICE BID FOR THE WORK.

COST OF REMOVAL AND RE-INSTALLATION OF ALL MEMBERS NECESSARY TO COMPLETE THE WORK AS DETAILED ON THE PLANS AND AS SPECIFIED IN THE SPECIAL PROVISIONS SHALL BE INCLUDED WITH FURNISHING AND ERECTING STRUCTURAL STEEL.

FOR STABILIZATION, ALL TYPE III BARRICADES SHALL REQUIRE A MINIMUM OF FOUR SAND BAGS PER BARRICADE.

ANY REFERENCE TO A STANDARD IN THESE PLANS SHALL BE INTERPRETED TO MEAN THE EDITION AS INDICATED BY THE SUBNUMBER SHOWN IN THE LIST OF STANDARDS OR THE COPY INCLUDED IN THESE PLANS.

THE CONTRACTOR SHALL CONTACT JULIE AT LEAST 48 HOURS PRIOR TO EXCAVATION TO DETERMINE WHICH UTILITIES ARE IN THE AREA.

COMMITMENTS

1. SN 038-0172 IS RESTRICTED TO 20 TON LOAD LIMIT

DATE: 02/25/2011

PREPARED BY: Dave Brivik
DISTRICT STUDIES & PLANS ENGINEER

EXAMINED BY: Harbert K. Long
DISTRICT CONSTRUCTION ENGINEER

Wayne Phillips
DISTRICT MATERIALS ENGINEER

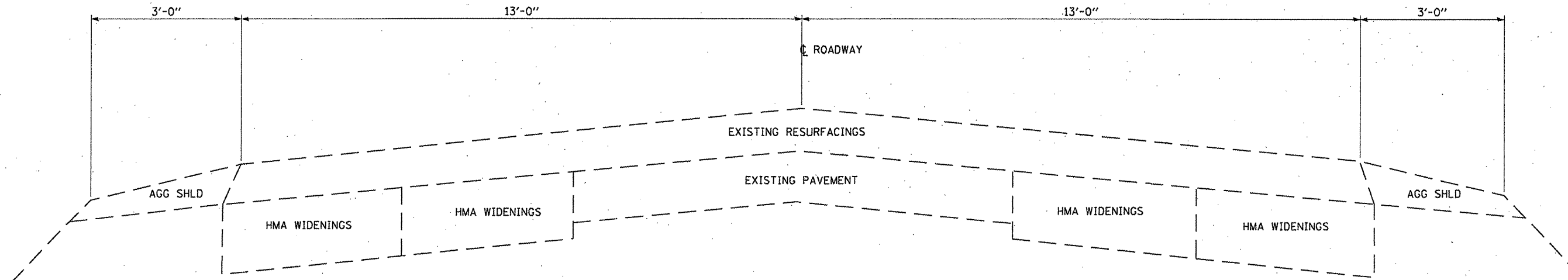
Bruce A. Wheeler
DISTRICT OPERATIONS ENGINEER

FILE NAME =	USER NAME = patelij	DESIGNED - RON WOODSHANK	REVISED -	STATE OF ILLINOIS DEPARTMENT OF TRANSPORTATION	GENERAL NOTES	F.A.P. RTE.	SECTION	COUNTY	TOTAL SHEETS	SHEET NO.
ca:\pw\work\p\patelij\0257586\036824-sht-details.DGN	DRAWN - RON WOODSHANK	REVISED -	681			(117-BR-1)I	IROQUOIS	6	2	
PLOT SCALE = 99.9849' / IN.	CHECKED -	REVISED -	CONTRACT NO. 66B24							
PLOT DATE = Feb 17, 2011 - 08:34:17 AM	DATE -	REVISED -	ILLINOIS FED. AID PROJECT							
SCALE: _____ SHEET NO. 1 OF 1 SHEETS STA. _____ TO STA. _____										

CONSTR. CODE
STATE FUNDS
100% STATE
STRUCTURE
0014
RURAL

CODE NO.	ITEM	UNIT	TOTAL QUANTITY
50500405	FURNISH ^{ING} AND ERECT ^{ING} STRUCTURAL STEEL	POUND	13,090
67100100	MOBILIZATION	L SUM	1
70100450	TRAFFIC CONTROL AND PROTECTION, STANDARD 701201	L SUM	1

Rev.



TYPICAL SECTION

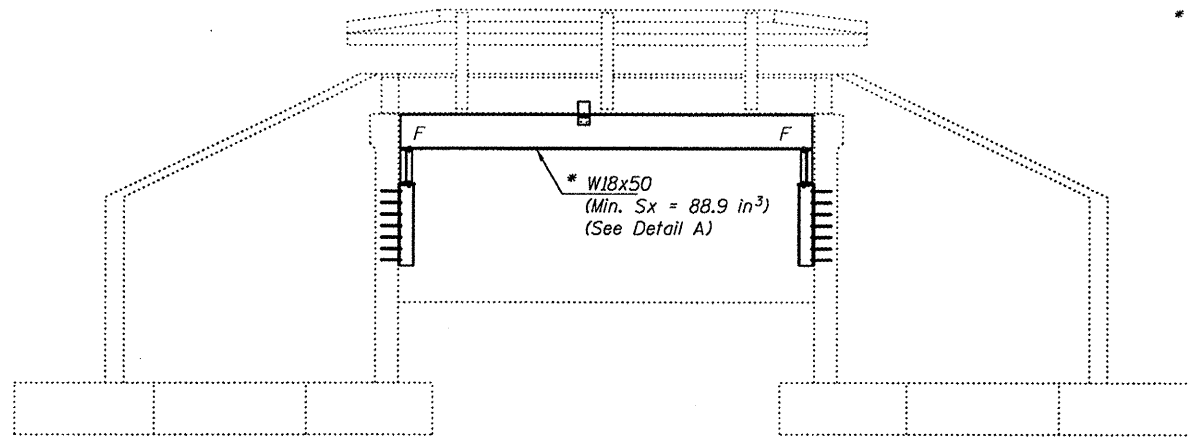
FILE NAME =	USER NAME = petely.j	DESIGNED - RQN_WOODSHANK	REVISED -
c:\pwork\pwork\petely\0257586\0366	24-sht-details.dgn	DRAWN - RQN_WOODSHANK	REVISED -
	PLDT SCALE = 100.1508' / IN.	CHECKED -	REVISED -
	PLOT DATE = Feb 17, 2011 - 08:39:22 AM	DATE -	REVISED -

**STATE OF ILLINOIS
DEPARTMENT OF TRANSPORTATION**

TYPICAL ROADWAY SECTION

SCALE: _____ SHEET NO. 1 OF 1 SHEETS STA. _____ TO STA. _____

F.A.P. RTE.	SECTION	COUNTY	TOTAL SHEETS	SHEET NO.
681	(117-BR-1)I	IROQUOIS	6	4
CONTRACT NO. 66B24			ILLINOIS FED. AID PROJECT	

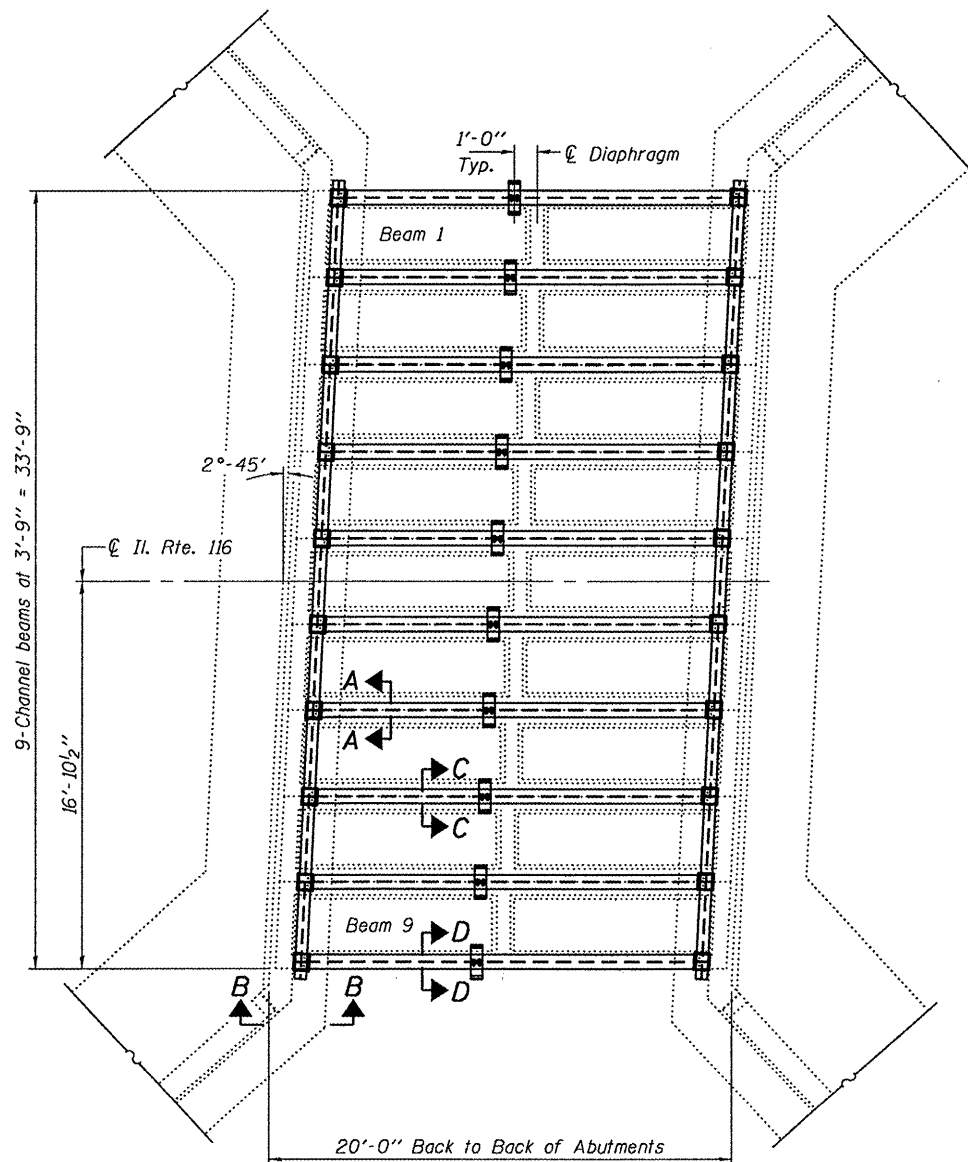
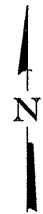


ELEVATION

* Contractor is to verify beam length prior to ordering material. Other sections meeting the section modulus requirements shown may be allowed subject to approval by the Bureau of Bridges and Structures. Maximum Girder depth = 18". No additional payment will be allowed if the contractor chooses a heavier steel section than the one specified in the plans.

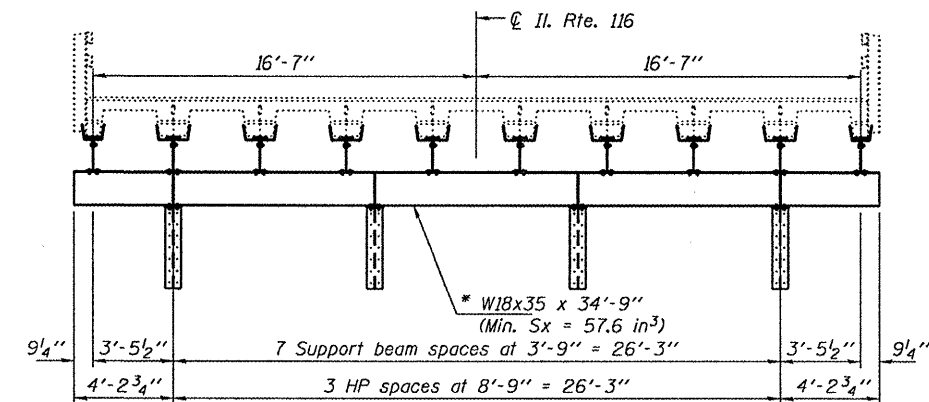
GENERAL NOTES

All structural steel shall conform to AASHTO Classification M-270 Gr. 36, unless otherwise noted.
 Plan dimensions and details relative to existing plans are subject to nominal construction variations. The Contractor shall field verify existing dimensions and details affecting new construction and make necessary approved adjustments prior to construction or ordering of materials. Such variations shall not be cause for additional compensation for a change in scope of the work, however, the Contractor will be paid for the quantity actually furnished at the unit price bid for the work.
 The contractor is advised that the existing Channel Beams are in a deteriorated condition with reduced load carrying capacity. It is the contractors responsibility to account for the condition of the beams when developing construction procedures.
 See Section 584 of the Standard Specifications for Epoxy Grouting of Threaded Rods; Minimum embedment 9".
 If the contractor's procedure for placement of beams involves placement of cranes or other heavy equipment on the bridge, a detailed procedure shall be submitted to the Engineer for approval. The procedure shall include calculations, prepared and sealed by an Illinois Licensed Structural Engineer, verifying that the equipment and procedure used will not overstress the existing beams. To distribute load to multiple beams and protect the existing surface, in all cases a double layer mat of heavy timbers shall be used at all times under crane tracks or wheels and any outriggers in the down position. If necessary, shims shall be used under the crane mat to ensure uniform contact with the underlying beams.
 The cost of epoxy grouting threaded rods on the pier cap, abutments and beams shall be included with Furnishing and Erecting Structural Steel.
 The Contractor has the option of using used steel. See Special Provisions.

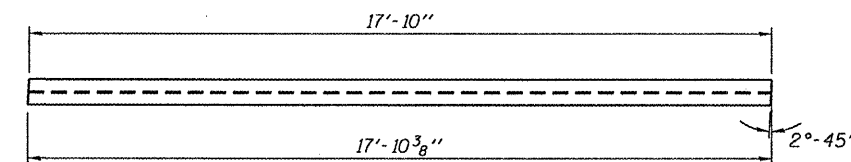


PLAN

For Sections A-A, B-B, C-C and D-D, See sheet 2 of 2.



CROSS SECTION



DETAIL A

TOTAL BILL OF MATERIAL

ITEM	UNIT	QUANTITY
Furnishing and Erecting Structural Steel	Pound	13090



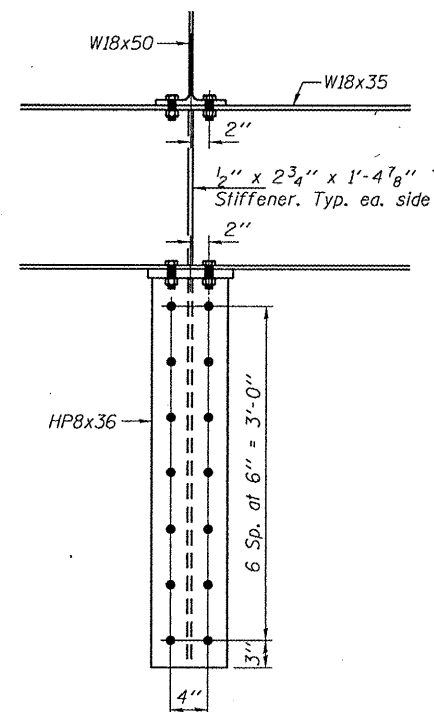
DESIGNED: <i>[Signature]</i>	EXAMINED: <i>[Signature]</i>	DATE: MARCH 14, 2011
CHECKED: <i>[Signature]</i>	PASSED: <i>[Signature]</i>	
DRAWN: <i>[Signature]</i>		
CHECKED: <i>[Signature]</i>		

**STATE OF ILLINOIS
DEPARTMENT OF TRANSPORTATION**

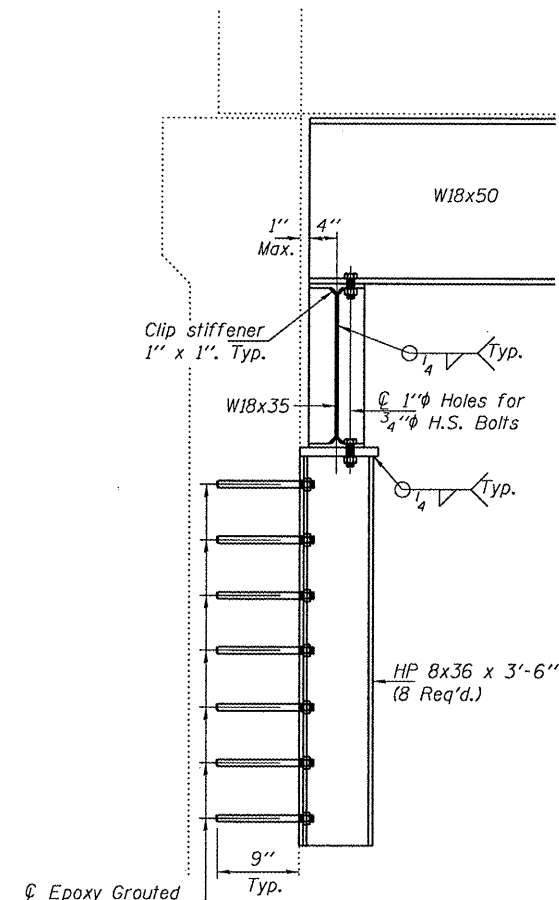
**GENERAL PLAN & ELEVATION
SN 038-0172**

SHEET NO. 1 OF 2 SHEETS

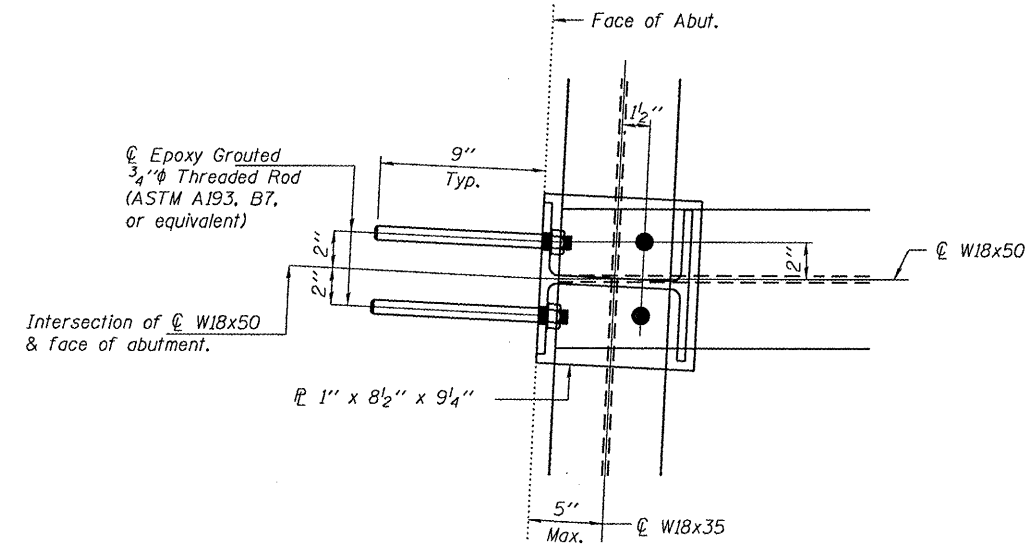
F.A.P. RTE.	SECTION	COUNTY	TOTAL SHEETS	SHEET NO.
681	(117-BR-11)	IRROUOIS	6	5
CONTRACT NO. 66B24			ILLINOIS FED. AID PROJECT	



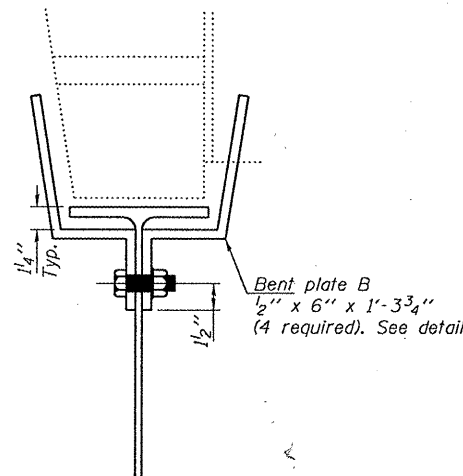
SECTION A-A



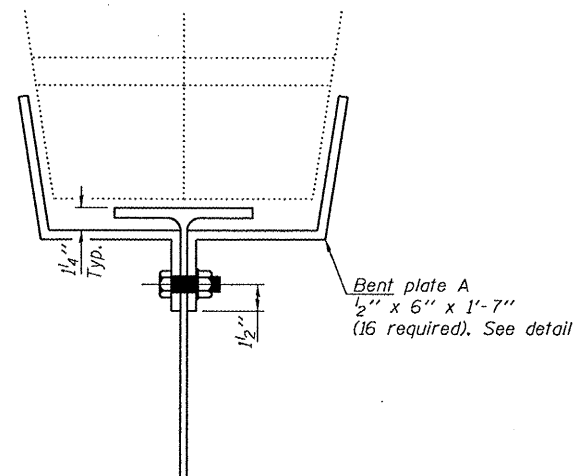
SECTION B-B



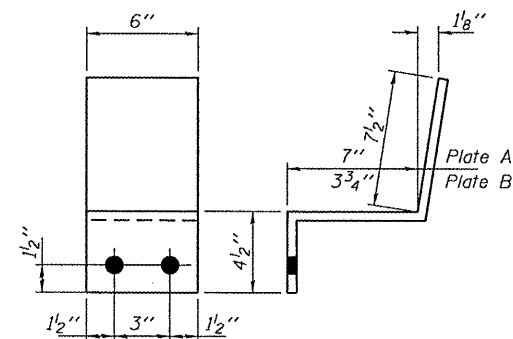
TYPICAL SECTION AT END OF SUPPORT BEAMS



SECTION D-D



SECTION C-C



BENT PLATE A & B

Place shims at 1/4 points. Securely weld shims to top flange of support beam. Minimum shim size is 6" x 9".

DESIGNED - GGE	EXAMINED - <i>Joanne F. Jaffe</i>	DATE - MARCH 14, 2011
CHECKED - IJL	ACTING ENGINEER OF STRUCTURAL SERVICES	
DRAWN - baliva	PASSED - <i>Carl Pinner</i>	
CHECKED - GGE IJL	ACTING ENGINEER OF BRIDGES AND STRUCTURES	

STATE OF ILLINOIS
DEPARTMENT OF TRANSPORTATION

REPAIR DETAILS
SN 038-0172

F.A.P. RTE.	SECTION	COUNTY	TOTAL SHEETS	SHEET NO.
681	(117-BR-1)I	IRROOUIS	6	6
CONTRACT NO. 66B24			ILLINOIS FED. AID PROJECT	

SHEET NO. 2 OF 2 SHEETS