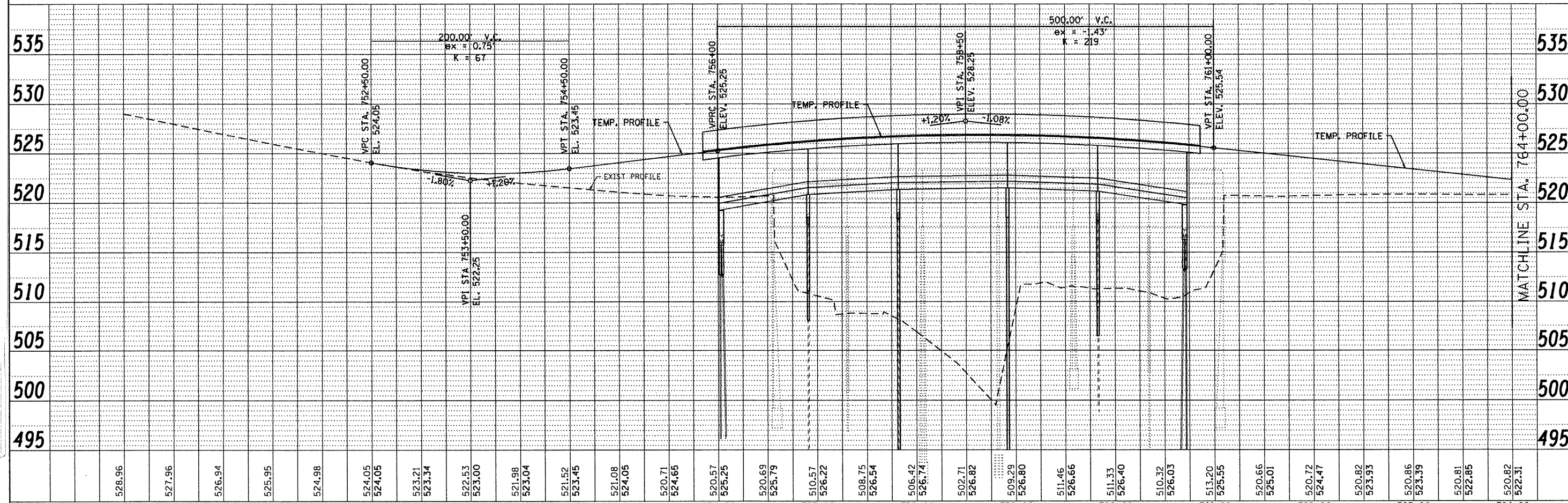


- LEGEND**
- TEMPORARY TRAFFIC SIGNAL
 - ▨ AREA OF CONSTRUCTION
 - ↔ DIRECTION OF TRAFFIC
 - ▨ PAVEMENT WIDENING
 - TEMPORARY CONCRETE BARRIER
 - ▨ IMPACT ATTENUATOR
 - ▨ GEOTEXTILE RETAINING WALL
 - PEDESTRIAN PUSH BUTTON

NOTES:
 1. INSTALL SOLAR-POWERED YELLOW FLASHING BEACON ON SIGNAL AHEAD SIGN FOR NORTHBOUND IL 61.

STAGE II



USER NAME = g.jameson	DESIGNED -	REVISED -	7018 KINGSMILL CT., SPRINGFIELD, IL (217) 483-9457 DESIGN FIRM #184001038	STATE OF ILLINOIS DEPARTMENT OF TRANSPORTATION		TRAFFIC CONTROL PLANS - STAGE II IL 61 OVER LAMOINE RIVER		F.A. RTE. 542	SECTION 105BR-1	COUNTY MCDONOUGH	TOTAL SHEETS 117	SHEET NO. 35
FILE NAME = D468482-stage 2	CHECKED -	REVISED -		SCALE: 1" = 50'		SHEET NO. 1 OF 2 SHEETS STA. 751+00.00 TO STA. 764+00.00		CONTRACT NO. 68482				
PLOT DATE = 12/21/2018	DRAWN -	REVISED -						ILLINOIS FED. AID PROJECT				
PLOT TIME = 10:28:16 AM	CHECKED -	REVISED -										