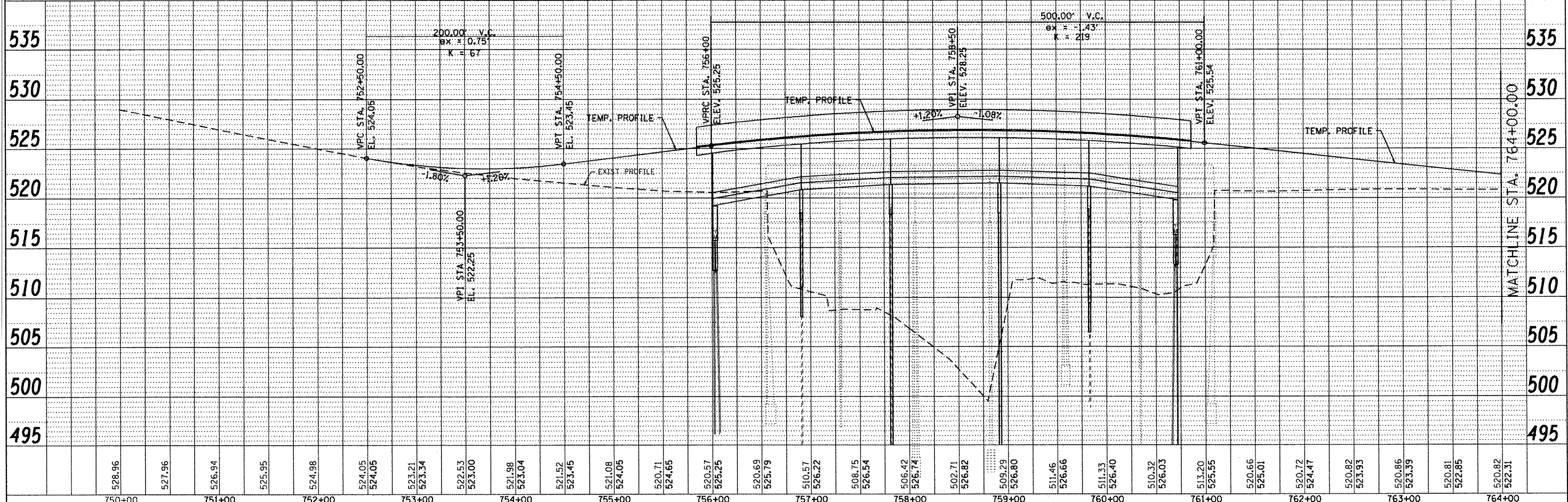


NOTES:

- INSTALL SOLAR-POWERED YELLOW FLASHING BEACON ON SIGNAL AHEAD SIGN FOR NORTHBOUND IL 61.

STAGE III



USER NAME = gjameson	DESIGNED -	REVISED -
FILE NAME = D468482-stage 3 sheet 117.dwg	DRAWN -	REVISED -
PLOT DATE = 12/21/2018	CHECKED -	REVISED -
PLOT TIME = 10:28:25 AM		

WHKS & CO.
ENGINEERING

7018 KINGSMILL CT.,
SPRINGFIELD, IL
(217) 483-9457
DESIGN FIRM #184001038

STATE OF ILLINOIS
DEPARTMENT OF TRANSPORTATION

TRAFFIC CONTROL PLANS - STAGE III
IL 61 OVER LAMOINE RIVER

SCALE: 1" = 50'
SHEET NO. 1 OF 2 SHEETS
STA. 751+00.00 TO STA. 764+00.00

F.A. RTE. 542	SECTION 105BR-1	COUNTY MCDONOUGH	TOTAL SHEETS 117	SHEET NO. 37
CONTRACT NO. 68482			ILLINOIS FED. AID PROJECT	