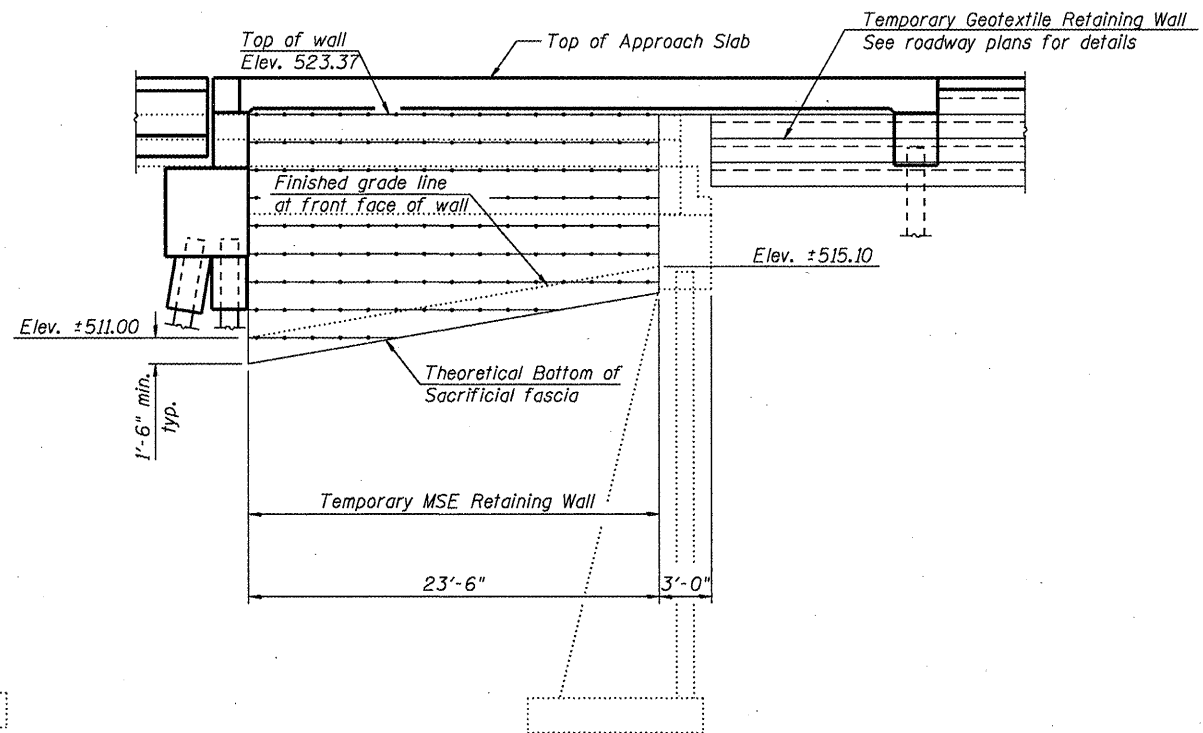


TEMPORARY SHEET PILING - SOUTH ABUTMENT



TEMPORARY MSE RETAINING WALL - NORTH ABUTMENT

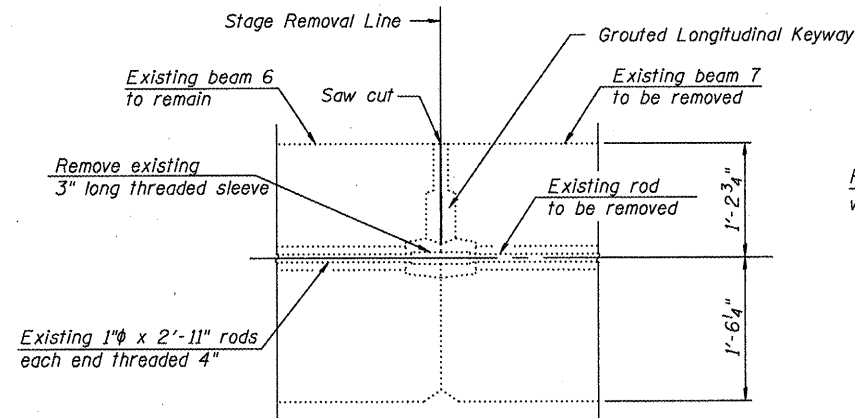
If the Contractor chooses to alter the Temporary Cantilevered Sheet Piling design requirements shown on the plans, a design submittal including plan details and calculations will be required for a review and acceptance by the Engineer.

The Contractor shall connect the first sheet to the existing abutment wall to ensure stability of sheets driven to the top of the existing footing. This connection shall be reviewed and accepted by the Engineer and included in the cost of Temporary Sheet Piling.

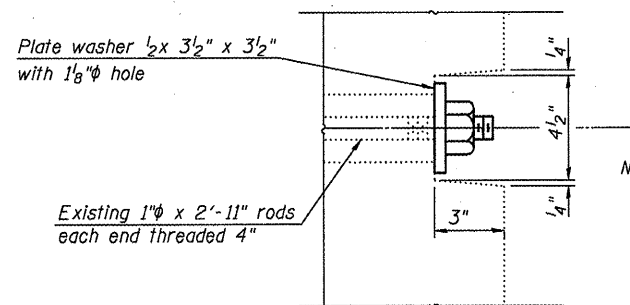
Minimum Required Section Modulus = 18.4 in³/ft.

BILL OF MATERIAL

ITEM	UNIT	SUPER	SUB	TOTAL
Temporary Sheet Piling	Sq. Ft.		1,904	1,904
Temporary Mechanically Stabilized Earth Retaining Wall	Sq. Ft.		278	278
Structure Excavation	Cu. Yd.		14	14



BEAM REMOVAL DETAIL AT TRANSVERSE TIE



EXISTING BEAM 6 TRANSVERSE TIE RECONNECTION
(18 Locations)

USER NAME = flowry	DESIGNED - BRD/FLL	REVISED - 1/24/11
FILE NAME = 0550083-68482.dgn	CHECKED - SDS/JHP	REVISED -
PLOT DATE = 1/31/2011	DRAWN - DLH	REVISED -
PLOT TIME = 3:33:45 PM	CHECKED - CWC/SDS	REVISED -

WHKS & co.
ENGINEERING
7018 KINGSMILL CT.,
SPRINGFIELD, IL
(217) 483-9457
DESIGN FIRM #184001036

STATE OF ILLINOIS
DEPARTMENT OF TRANSPORTATION

STAGE CONSTRUCTION DETAILS
S.N. 055-0083

SHEET NO. 4 OF 41 SHEETS

F.A.P. RTE. 542	SECTION 105BR-1	COUNTY MCDONOUGH	TOTAL SHEETS 117	SHEET NO. 44
CONTRACT NO. 68482			ILLINOIS FED. AID PROJECT	