

STANDARD BAR SPLICER ASSEMBLY

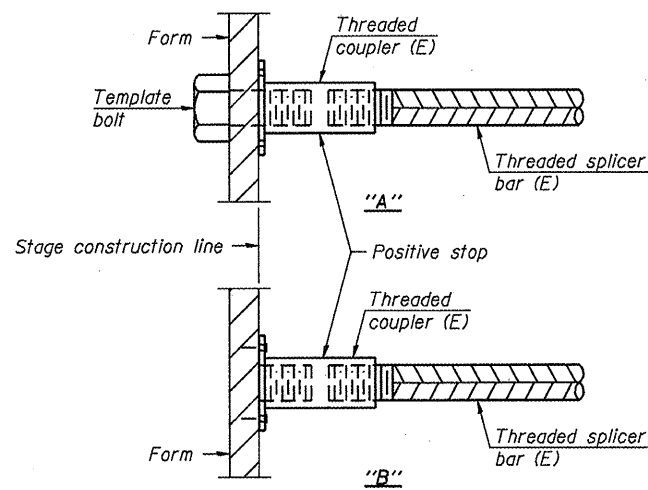
Minimum Lap Lengths					
Bar size to be spliced	Table 1	Table 2	Table 3	Table 4	Table 5
3, 4	1'-5"	1'-11"	2'-1"	2'-4"	2'-3"
5	1'-9"	2'-5"	2'-7"	2'-11"	2'-10"
6	2'-1"	2'-11"	3'-1"	3'-6"	3'-4"
7	2'-9"	3'-10"	4'-2"	4'-8"	4'-6"
8	3'-8"	5'-1"	5'-5"	6'-2"	5'-10"
9	4'-7"	6'-5"	6'-10"	7'-9"	7'-5"

- Table 1: Black bar, 0.8 Class C
- Table 2: Black bar, Top bar lap, 0.8 Class C
- Table 3: Epoxy bar, 0.8 Class C
- Table 4: Epoxy bar, Top bar lap, 0.8 Class C
- Table 5: Epoxy bar, Top bar lap, Class B

Threaded splicer bar length = min. lap length + 1/2" + thread length

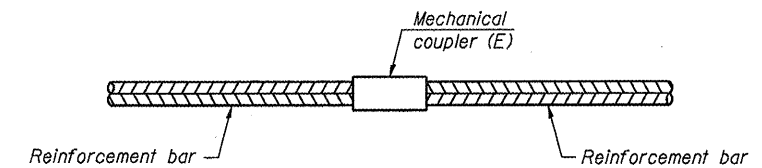
* Epoxy not required on Bar Splicer Assembly components used in conjunction with black bars.

Location	Bar size	No. assemblies required	Table for minimum lap length
North Abut.	5	10	4
North Abut.	6	7	4
North Abut.	7	8	4
South Abut.	5	10	4
South Abut.	6	7	4
South Abut.	7	8	4
Pier 1 Wall	6	14	4
Pier 1 Cap	7	12	4
Pier 2 Wall	6	42	4
Pier 2 Fig.	5	23	4
Pier 3 Wall	6	44	4
Pier 3 Cap	7	12	4
Pier 4 Wall	6	14	4
Pier 4 Cap	7	12	4
Top of Deck	5	813	4
Bottom of Deck	5	572	4
Diaphragms	4	32	4
North Approach	4	33	4
North Approach	5	61	4
North Approach	7	10	4
South Approach	4	25	4
South Approach	5	46	4
South Approach	7	10	4



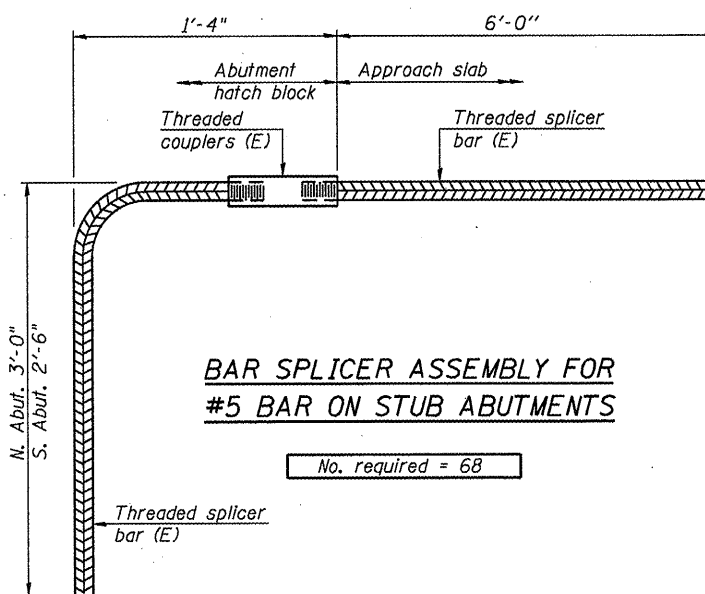
INSTALLATION AND SETTING METHODS

"A" : Set bar splicer assembly by means of a template bolt.
 "B" : Set bar splicer assembly by nailing to wood forms or cementing to steel forms.
 (E) : Indicates epoxy coating.



STANDARD MECHANICAL SPLICER

Location	Bar size	No. assemblies required
Pier 1	#6	42
Pier 2	#6	90
Pier 2	#9	70
Pier 3	#6	66
Pier 4	#6	42



BAR SPLICER ASSEMBLY FOR #5 BAR ON STUB ABUTMENTS

No. required = 68

NOTES

Splicer bars shall be deformed with threaded ends and have a minimum 60 ksi yield strength.
 All reinforcement shall be lapped and tied to the splicer bars.
 Bar splicer assemblies shall be epoxy coated according to the requirements for reinforcement bars. See Section 508 of the Standard Specifications.
 See special provision for Mechanical Splicers.
 See approved list of bar splicer assemblies and mechanical splicers for alternatives.

BSD-1

7-1-10

USER NAME = flowry	DESIGNED - BRD/FLL	REVISED - 1/24/11
FILE NAME = 0550083-68482.dgn	CHECKED - SDS/JHP	REVISED -
PLOT DATE = 1/31/2011	DRAWN - DLH	REVISED -
PLOT TIME = 3:34:40 PM	CHECKED - CWC/SDS	REVISED -

WHKS & co.
 ENGINEERING
 7018 KINGSMILL CT.,
 SPRINGFIELD, IL
 (217) 483-9457
 DESIGN FIRM #184001036

STATE OF ILLINOIS
DEPARTMENT OF TRANSPORTATION

BAR SPLICER ASSEMBLY AND MECHANICAL SPLICER DETAILS
S.N. 055-0083

SHEET NO. 32 OF 41 SHEETS

F.A.P. RTE. 542	SECTION 105BR-1	COUNTY MCDONOUGH	TOTAL SHEETS 117	SHEET NO. 72
CONTRACT NO. 68482			ILLINOIS FED. AID PROJECT	