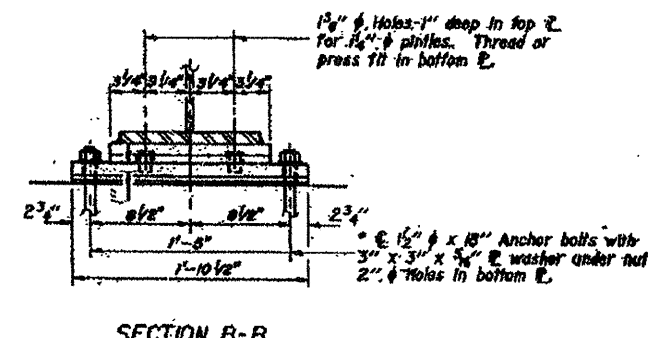
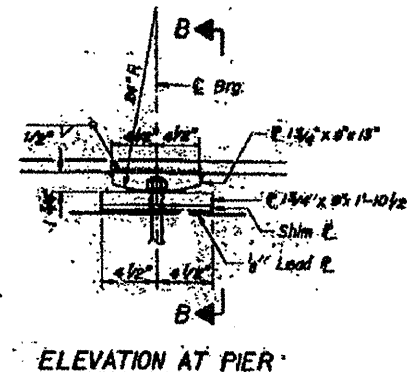
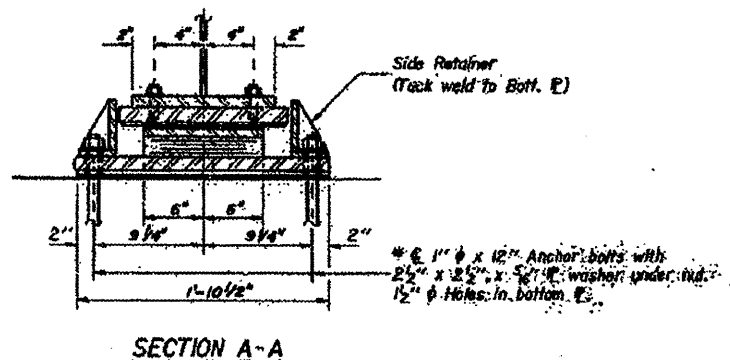
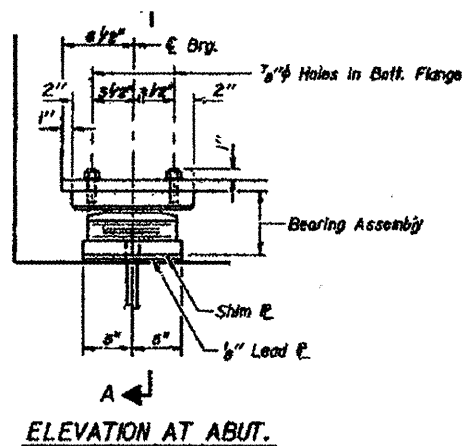


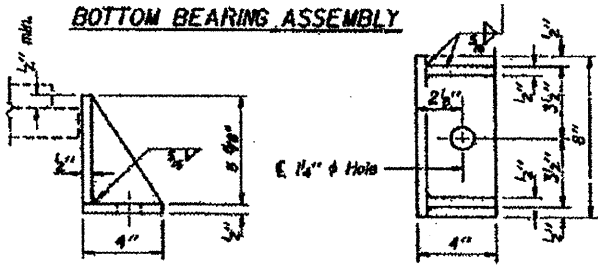
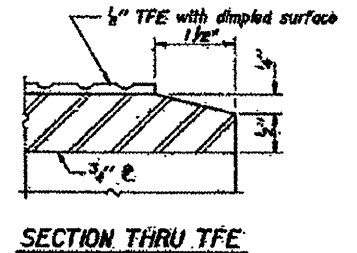
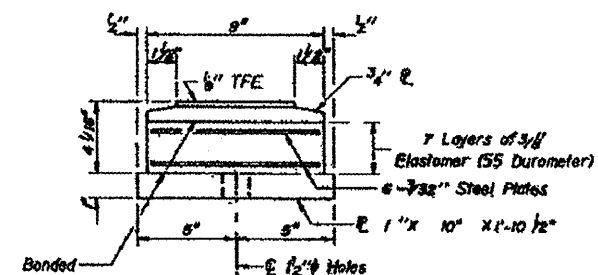
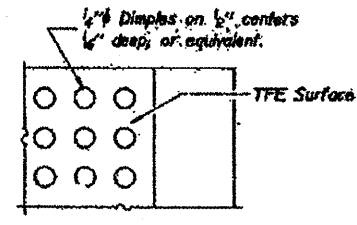
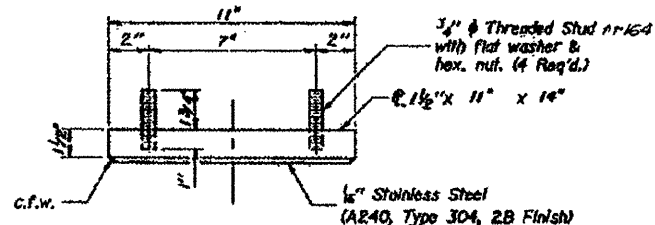
LOCATION 2 STRUCTURE NO.029-0055

SPoon RIVER OVERFLOW
INFORMATION ONLY

STATE OF ILLINOIS
DEPARTMENT OF TRANSPORTATION

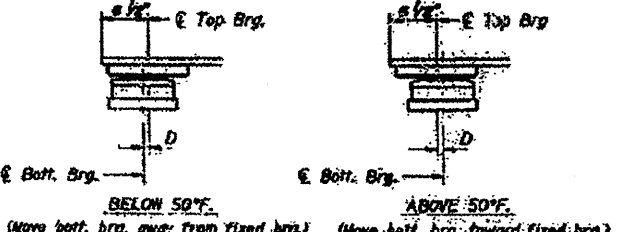


TYPE II TFE ELASTOMERIC EXP. BRG.
(At Abutments)

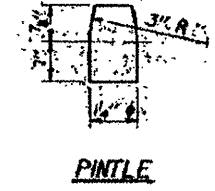


Note: The 1/2" TFE sheet shall be bonded directly to the top steel plate with a two-component, medium viscosity epoxy resin conforming to the requirements of the Federal Specification MM-A-134, Type I. The bond agent shall be applied on the full area of the contact surfaces.

Bonding of 1/2" TFE sheet during vulcanizing process shall be permitted provided the process and method of adjusting assembly height is approved by the Engineer.



FIXED BEARING
(At Piers)
(If Required)
All structural steel for fixed bearings at piers shall be AASHTO M223, GR 50



STATE OF ILLINOIS
DEPARTMENT OF TRANSPORTATION

FILE NAME = 68996 4-29-2011.dgn
USER NAME = unglstj
DESIGNED -
DRAWN -
PLDT SCALE = 28,7659' / IN.
CHECKED -
PLDT DATE = 2/14/2011
DATE -

REVISI
REVISI
REVISI
REVISI

SCALE: SHEET NO. OF SHEETS STA. TO STA.

F.A. SECTION COUNTY TOTAL SHEETS SHEET NO.
RTE. D4 Bridge Metallizing 2011 ILLION 19 10
CONTRACT NO. 68996
ILLINOIS FED. AID PROJECT