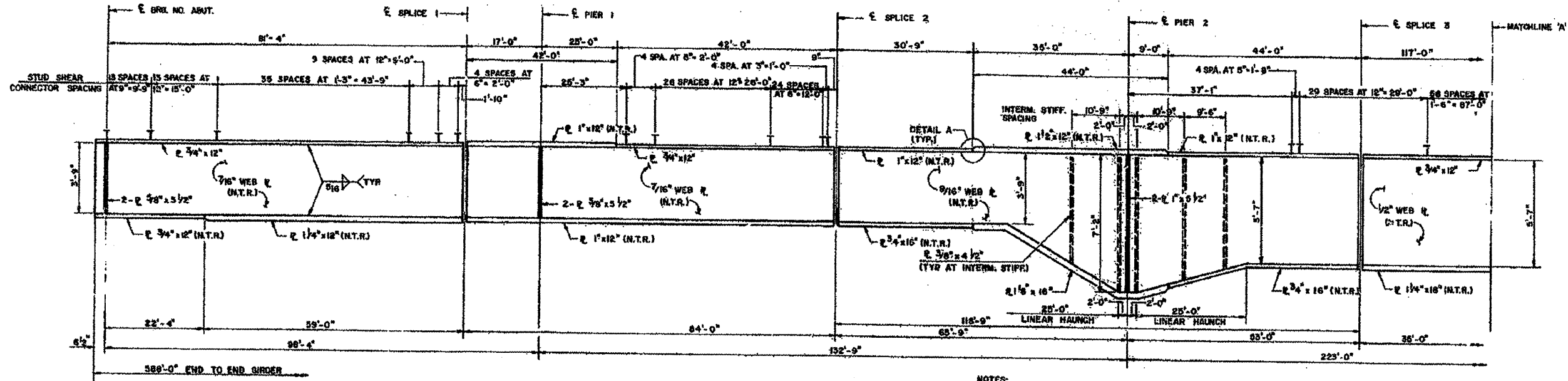


# LOCATION 3 STRUCTURE NO. 029-0056

## IL 78 & 97

### OVER SPOON RIVER

### INFORMATION ONLY

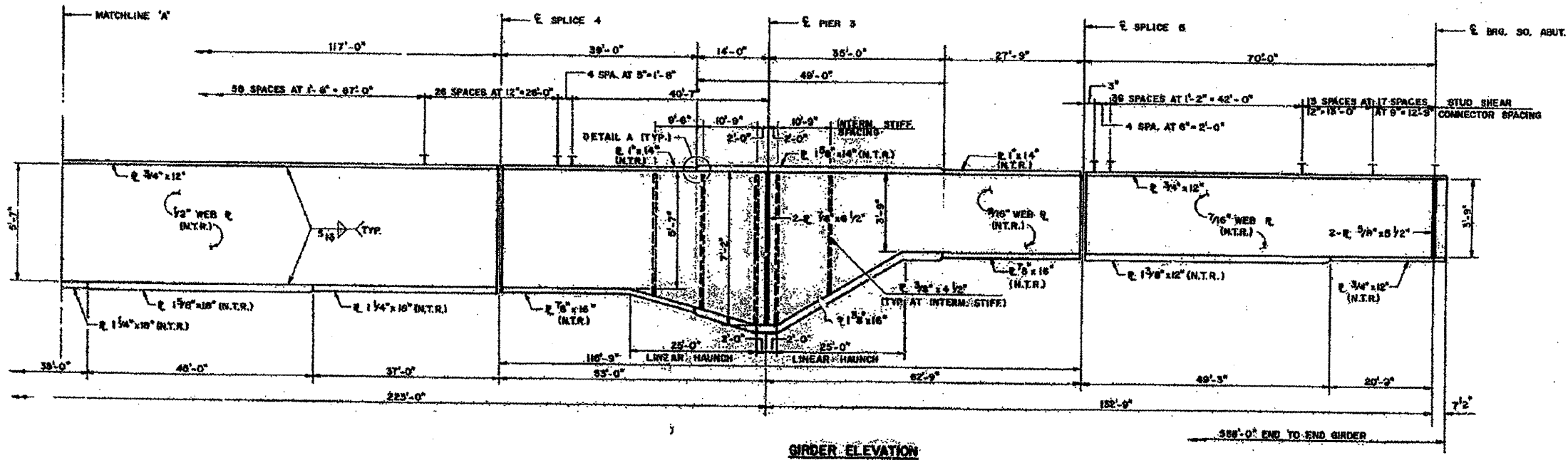


N.T.R. = NOTCH TOUGHNESS REQUIREMENTS.

#### GIRDER ELEVATION

(ALL GIRDER STEEL IS AASHTO M223, GR. 50 & ALL INTERN. STIFF. STEEL IS AASHTO M185.)

NOTES:  
 FOR FRAMING PLAN, SEE SHEET #9 OF 27.  
 FOR MISCELLANEOUS FRAMING DETAILS, SEE SHEET #11 OF 27.  
 FOR FIELD SPLICE DETAILS, SEE SHEET #12 OF 27.  
 FOR FRAMING DETAILS, SEE SHEET #13 OF 27.



#### GIRDER ELEVATION

FILE NAME = 68996 4-29-2011.dgn	USER NAME = inglistj	DESIGNED -	REVISED -	<b>STATE OF ILLINOIS DEPARTMENT OF TRANSPORTATION</b>						
		DRAWN -	REVISED -							
		CHECKED -	REVISED -							
		DATE -	REVISED -							
SCALE: _____ SHEET NO. _____ OF _____ SHEETS STA. _____ TO STA. _____										
					F.A. RTE: vac	SECTION: 04 Bridge Metallizing 201	COUNTY: FULLON	TOTAL SHEETS: 18	SHEET NO.: 12	
					CONTRACT NO. 68996 ILLINOIS FED. AID PROJECT					