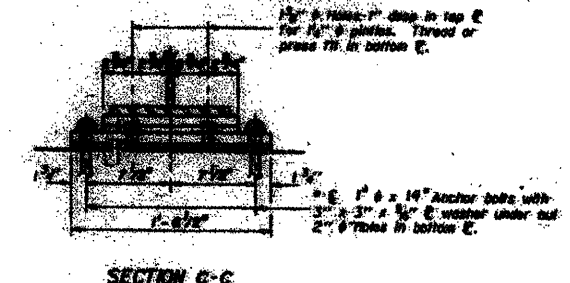
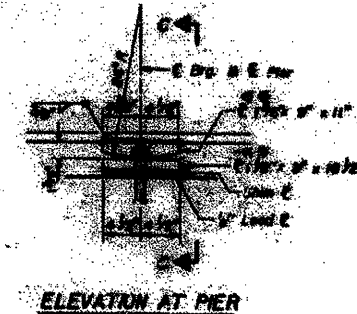
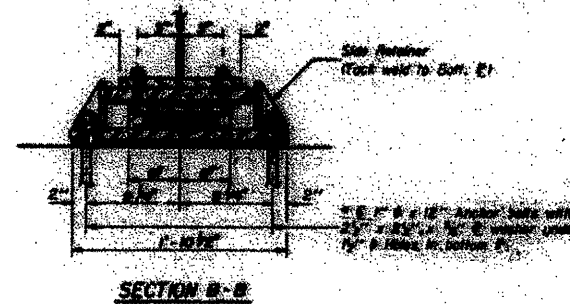
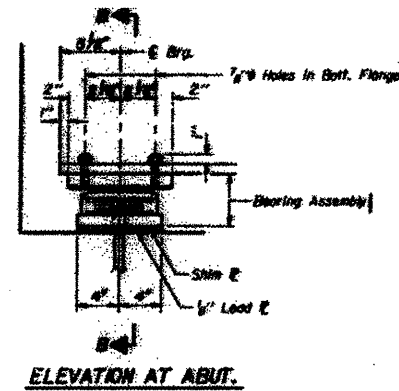


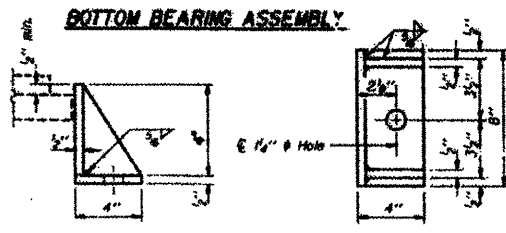
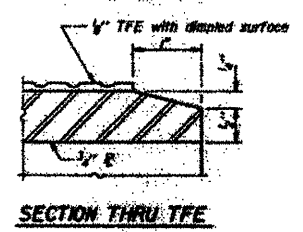
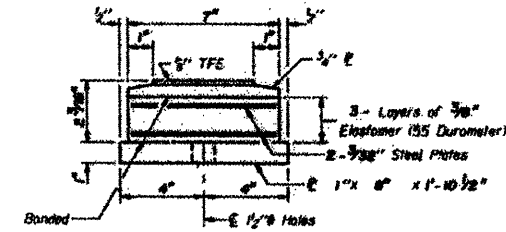
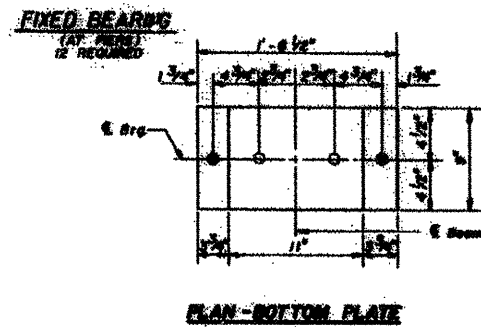
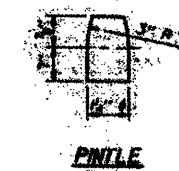
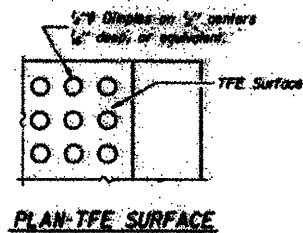
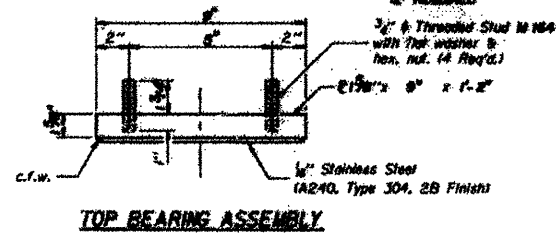
LOCATION 4 STRUCTURE NO. 029-0021

IL 78 & 97

OVER LACY DITCH
INFORMATION ONLY

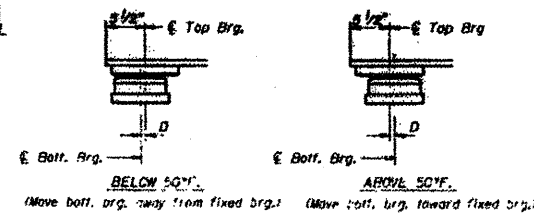


TYPE II TFE ELASTOMERIC EXP. BRG.



Note: The 1/4" TFE sheet shall be bonded directly to the top steel plate with a two-component, medium viscosity epoxy resin, conforming to the requirements of the Federal Specification WMM-A-134, Type I. The bond agent shall be applied on the full area of the contact surfaces.

Bonding of 1/4" TFE sheet during vulcanizing process will be permitted provided the process and method of adjusting assembly height is approved by the Engineer.



BILL OF MATERIAL

Item	Unit	Total
Elastomeric Bearing Assembly Type II	Each	12