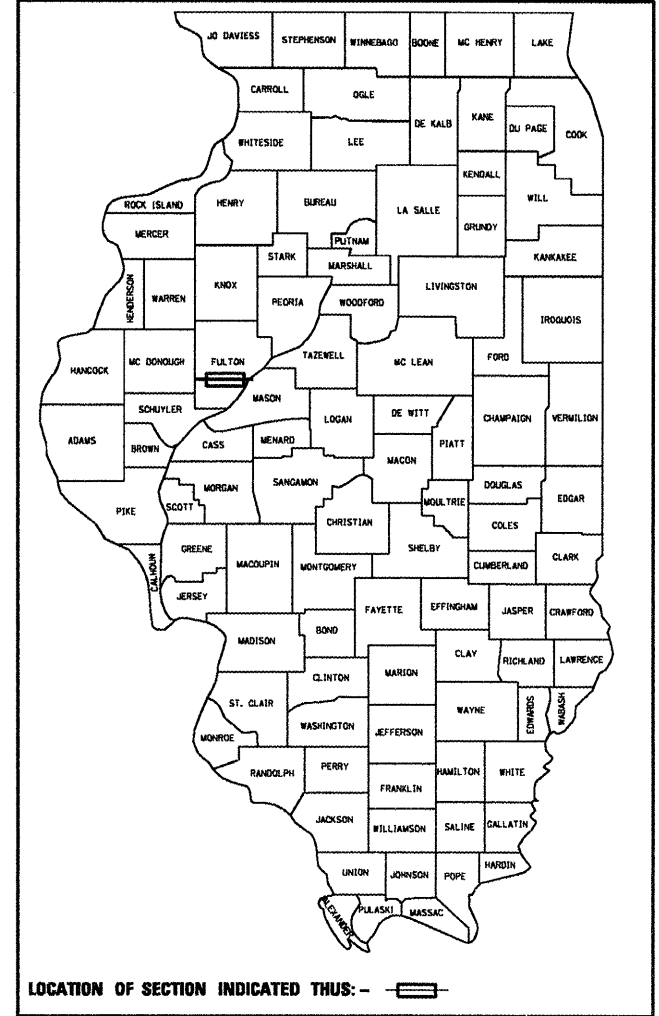


F.A. RTE.	SECTION	COUNTY	TOTAL SHEETS	SHEET NO.
VAR	D4 Bridge Metallizing 201	FULTON	19	3
		ILLINOIS	CONTRACT NO. 68996	

D-94-062-10



LOCATION OF SECTION INDICATED THUS: - [Symbol]

**STATE OF ILLINOIS
DEPARTMENT OF TRANSPORTATION
DIVISION OF HIGHWAYS**

**PROPOSED
HIGHWAY PLANS**

**ROUTE VARIOUS
SECTION D4 BRIDGE METALLIZING 2011
PROJECT N/A
TYPE of IMPROVEMENT: BRIDGE METALLIZING
COUNTY FULTON
C-94-119-10**

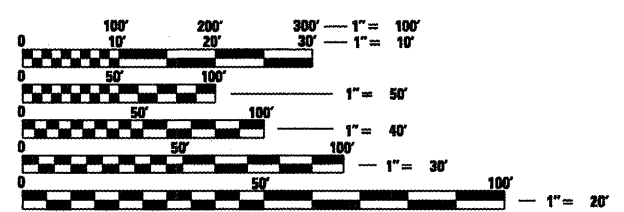
FOR INDEX OF SHEETS, SEE SHEET NO.

- 1 COVER SHEET
- 2 SUMMARY OF QUANTITIES
- 3 COMMITMENT SHEET/GENERAL NOTES
- 4-19 PLAN SHEETS

TRAFFIC STANDARDS

- 701101-02
- 701106-02
- 701201-04
- 701901-01

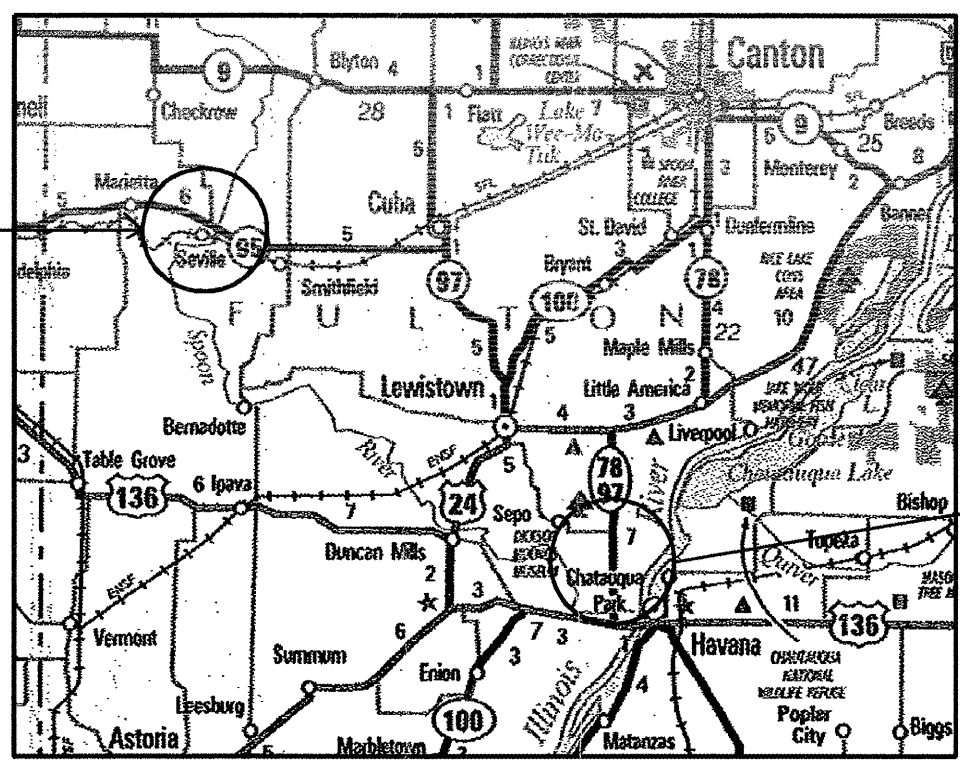
LOCATION 1
ADT 1500 TRUCK 120
LOCATION 2, 3 & 4
ADT 3350 TRUCK 375



FULL SIZE PLANS HAVE BEEN PREPARED USING STANDARD ENGINEERING SCALES. REDUCED SIZED PLANS WILL NOT CONFORM TO STANDARD SCALES. IN MAKING MEASUREMENTS ON REDUCED PLANS, THE ABOVE SCALES MAY BE USED.

J.U.L.I.E.
JOINT UTILITY LOCATION INFORMATION FOR EXCAVATION
1-800-892-0123
OR 811

LOCATION 1
STRUCTURE 029-0025



LOCATION 2, 3 & 4
STRUCTURES
029-0055
029-0056
029-0021

STATE OF ILLINOIS
DEPARTMENT OF TRANSPORTATION
DIVISION OF HIGHWAYS

SUBMITTED FEB 16 20 11

[Signature]
DEPUTY DIRECTOR OF HIGHWAYS, REGION ENGINEER

March 25 20 11
Scott E. Still P.E.
ENGINEER OF DESIGN AND ENVIRONMENT

March 25 20 11
Christine M. Reader
DIRECTOR OF HIGHWAYS, CHIEF ENGINEER

**PRINTED BY THE AUTHORITY
OF THE STATE OF ILLINOIS**

PROJECT ENGINEER JIM MILLER (309)671-3451
PROJECT DESIGNER TOM INGLIS (309)671-3451

CONTRACT NO. 68996 CATALOG NO. 034482-00D

Summary of Quantities

Code Order

ROUTE		SECTION	COUNTY	SHEET	
VAR		D4 BRIDGE METALIZING 2011	FULTON	TOTAL	NO.
VAR				19	2
			CONTRACT NO.	68996	

CONSTRUCTION TYPE CODE

VARIOUS RTE	
0014	
FULTON	
100% STATE	

CODE No.	ITEM	UNIT	Tot.QTY		
67100100	MOBILIZATION	L SUM	1	1	
70100450	TRAFFIC CONTROL AND PROTECTION, STANDARD 701201	L SUM	1	1	
X0325381	FIELD THERMAL SPRAYING (METALLIZING) STRUCTURAL STEEL NO. 1	L SUM	1	1	
X0325382	FIELD THERMAL SPRAYING (METALLIZING) STRUCTURAL STEEL NO. 2	L SUM	1	1	
X0325383	FIELD THERMAL SPRAYING (METALLIZING) STRUCTURAL STEEL NO. 3	L SUM	1	1	
X0325384	FIELD THERMAL SPRAYING (METALLIZING) STRUCTURAL STEEL NO. 4	L SUM	1	1	
X5060602	CONTAINMENT AND DISPOSAL OF NON-LEAD PAINT CLEANING RESIDUES NO.2	L SUM	1	1	
X5060603	CONTAINMENT AND DISPOSAL OF NON-LEAD PAINT CLEANING RESIDUES NO.3	L SUM	1	1	
X5060604	CONTAINMENT AND DISPOSAL OF NON-LEAD PAINT CLEANING RESIDUES NO.4	L SUM	1	1	
Z0007101	CONTAINMENT AND DISPOSAL OF LEAD PAINT CLEANING RESIDUES NO.1	L SUM	1	1	

COMMITMENTS

No Commitments have been made for this project

GENERAL NOTES

All Metalizing shall be as specified in the Special Provision for " Field Thermal Spraying Metalizing " All beams, brackets and all other structural steel shall be cleaned per Near White Blast Cleaning – SSPC SP 10 according to the following schedule:

Bridge No. 1 – 4 – All beams, bearings, brackets and all other structural steel within 5 feet (as measured along the centerline of the beam) of either side of the deck joints.

The final finish coat shall be according to the following schedule:

Bridge 1 Shall be Blue (Munsell No.10B 3/6)

Bridge 2 – 4 Shall be Green (Munsell No.7.5G 4/8)

Sealer and Top Coat Shall be from the approved list from table one (1) of the Special Provisions

AIR MONITORS

Location 1 – (1)

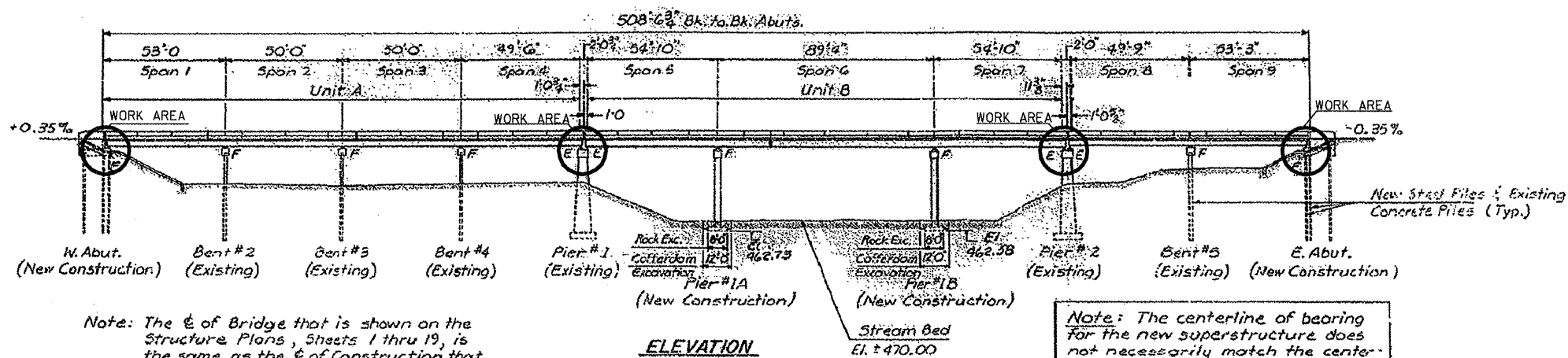
Locations 2 – 4 (0)

QP1 & QP2 Required for this Project.

FILE NAME = 68996 4-29-2011.dgn	USER NAME = mg1stj	DESIGNED - DRAWN -	REVISED - REVISED -	STATE OF ILLINOIS DEPARTMENT OF TRANSPORTATION	SCALE: _____	SHEET NO. _____ OF _____ SHEETS	STA. _____ TO STA. _____	F.A. RTE. _____	SECTION 04 Bridge Metalizing 201	COUNTY FULTON	TOTAL SHEETS 19	SHEET NO. 3	
	PLOT SCALE = 28.7728' / IN.	CHECKED -	REVISED -						VAR				
	PLOT DATE = 2/14/2011	DATE -	REVISED -										
ILLINOIS FED. AID PROJECT													

LOCATION 1 STRUCTURE NO. 029-0025 IL 95 OVER THE SPOON RIVER INFORMATION ONLY

Estimated Structural Steel in Existing Bridge 572,940 Lbs.

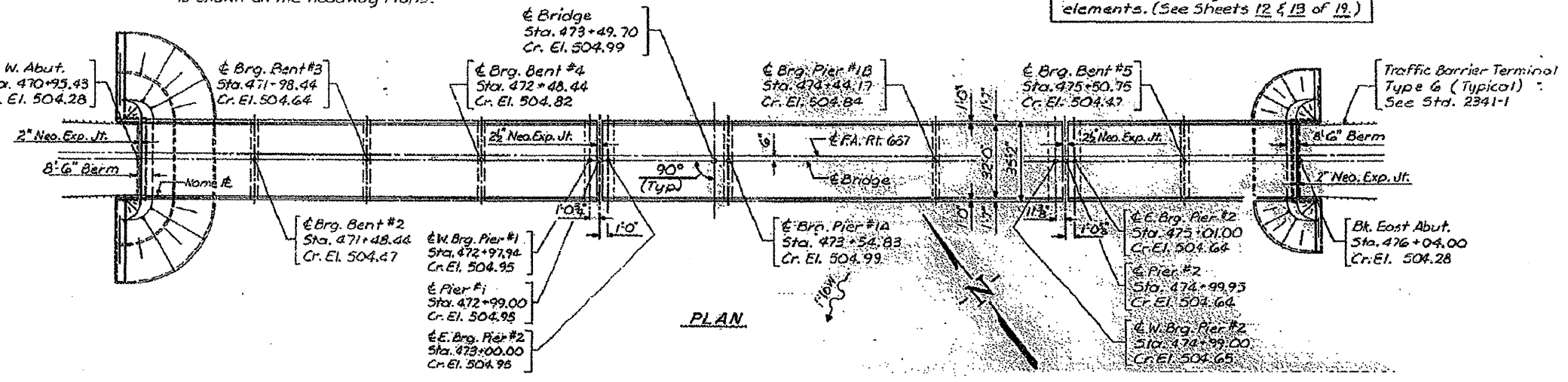


Note: The \bar{c} of Bridge that is shown on the Structure Plans, Sheets 1 thru 19, is the same as the \bar{c} of Construction that is shown on the Roadway Plans.

Note: The centerline of bearing for the new superstructure does not necessarily match the centerline of the existing substructure elements. (See Sheets 12 & 13 of 19.)

GENERAL NOTES:

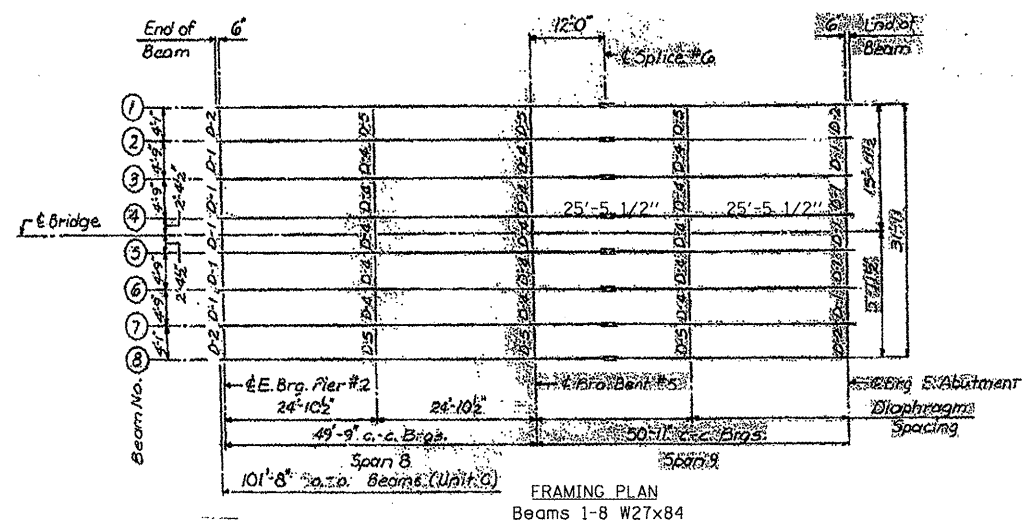
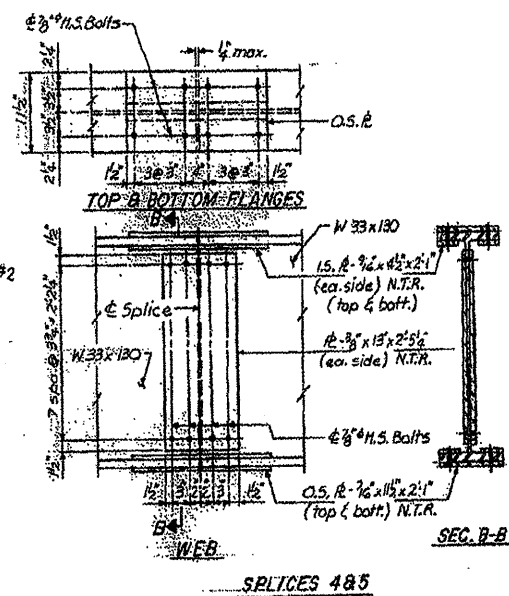
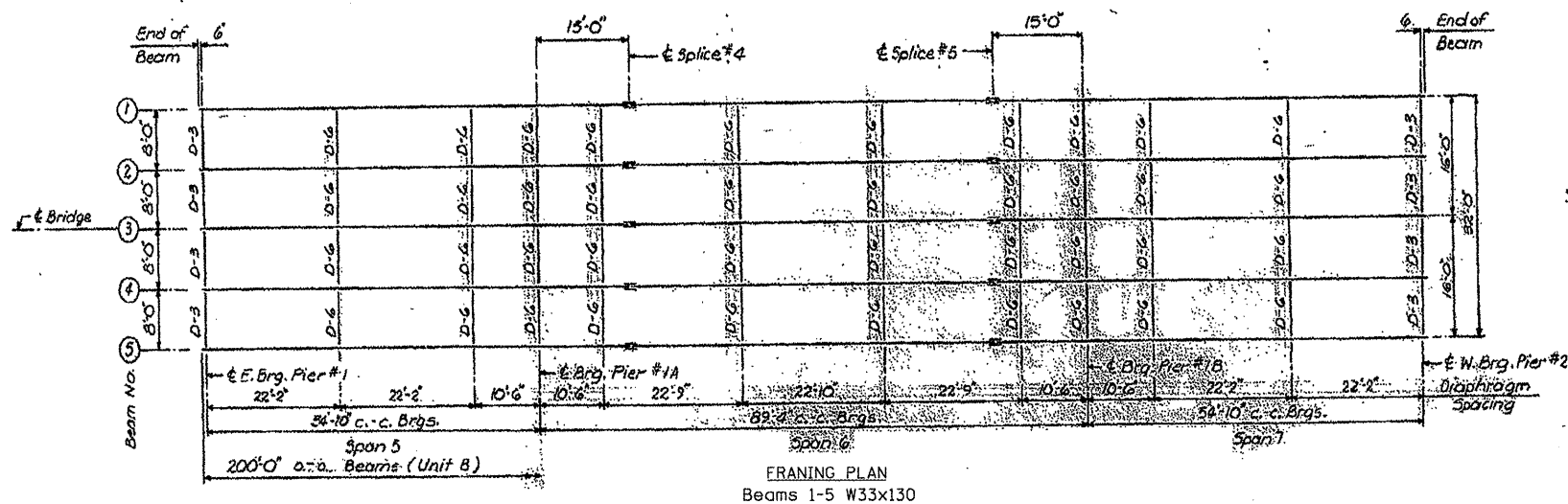
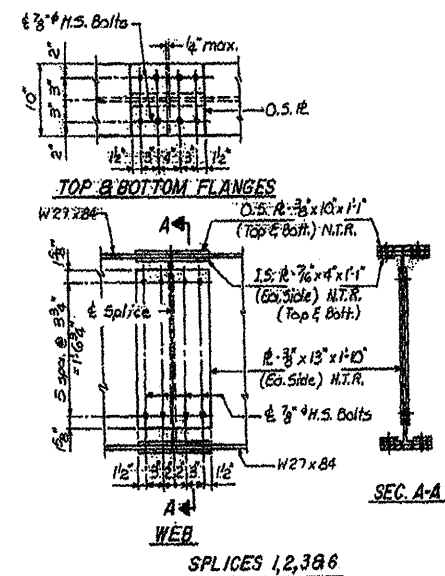
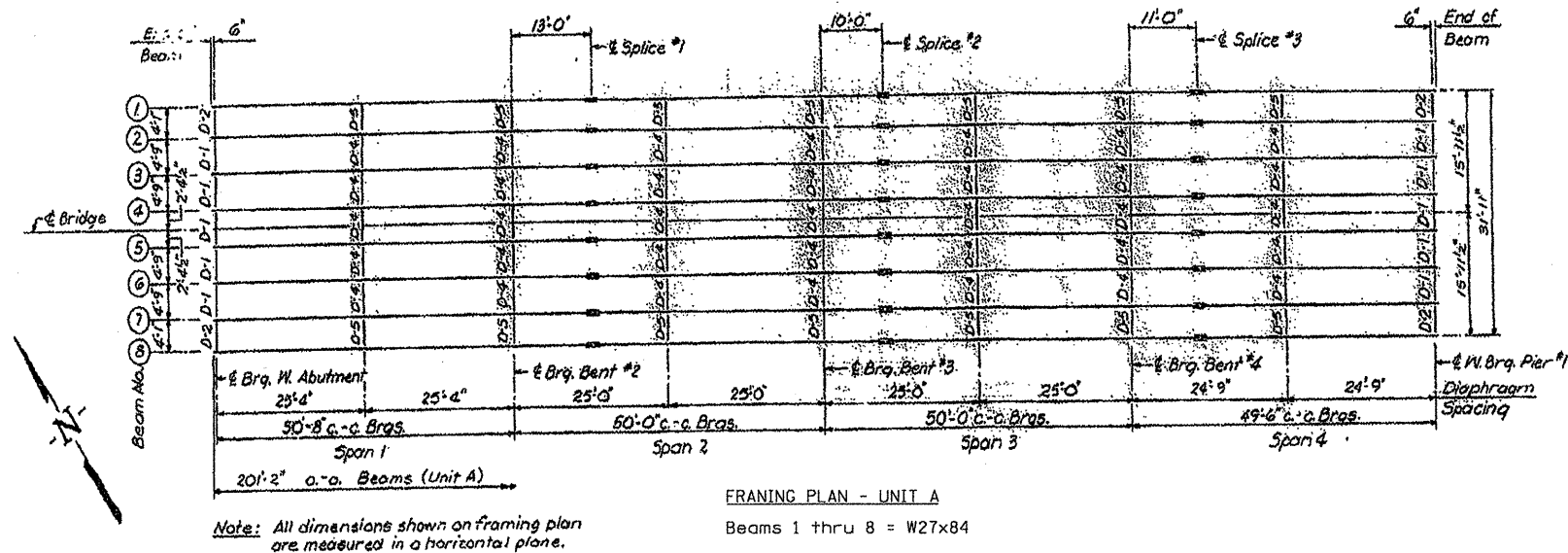
1. Reinforcement bars shall be AASHTO M-31 or M-58 Grade 60.
2. See Sheet 2 of 19 for Boring Data.
3. Fasteners shall be High Strength Bolts AASHTO M 164, Type III. Bolts $\frac{3}{8}$ "^Ø, open holes $\frac{1}{16}$ "^Ø, unless otherwise noted.
4. Calculated weight of Structural Steel = 383,990 Lbs. M 222.
5. All structural steel shall be AASHTO M 222.
6. The basic lead silico chromate paint system shall be used for shop & field painting of Structural Steel except where otherwise noted.
7. AASHTO M 222 structural steel shall not be painted except, that for a distance of three times the depth of the beams or girders (but not exceeding 10 feet) each way from deck joints, the AASHTO M 222 structural steel shall be cleaned and given one coat of the basic lead silico chromate primer & maroon field coat. Both coats to be applied in the shop with spot painting only in the field.
8. The structural steel bearing plates of the Elastomeric Bearing Assembly shall conform to the requirements of AASHTO M 222.
9. Field welding of construction accessories will not be permitted to the bottom flange of beams nor to the top flange for a distance equal to one-fourth the span length each way from the pier supports. Field welding in other areas will be permitted only when approved by the Engineer.
10. Anchor bolts shall be set before bolting diaphragms over supports.
11. Layout of slope walls may be varied in the field to suit ground conditions as directed by the Engineer.
12. The contractor shall drive two HP10x42 test piles in permanent locations, one at Bent #3 and one at the East Abutment, as directed by the Engineer before ordering the remainder of piles.
13. Plan dimensions and details relative to the existing substructure have been taken from existing plans and are subject to nominal construction variations. It shall be the Contractor's responsibility to verify such dimensions and details in the field and make necessary approved adjustments prior to construction or ordering of materials. Such variations shall not be the cause for additional compensation for a change in the scope of the work, however, the Contractor will be paid for the quantity actually furnished at the unit price bid for the work.



FILE NAME = 68996 4-29-2011.dgn	USER NAME = vng1stj	DESIGNED -	REVISED -	STATE OF ILLINOIS DEPARTMENT OF TRANSPORTATION	SCALE:	SHEET NO. OF SHEETS STA. TO STA.	F.A. RTE. SECTION COUNTY TOTAL SHEETS SHEET NO. D4 Bridge Metallizing 20 FULTON 19 4 CONTRACT NO. 68996 ILLINOIS FED. AID PROJECT
		DRAWN -	REVISED -				
		CHECKED -	REVISED -				
		DATE -	REVISED -				

INFORMATION ONLY

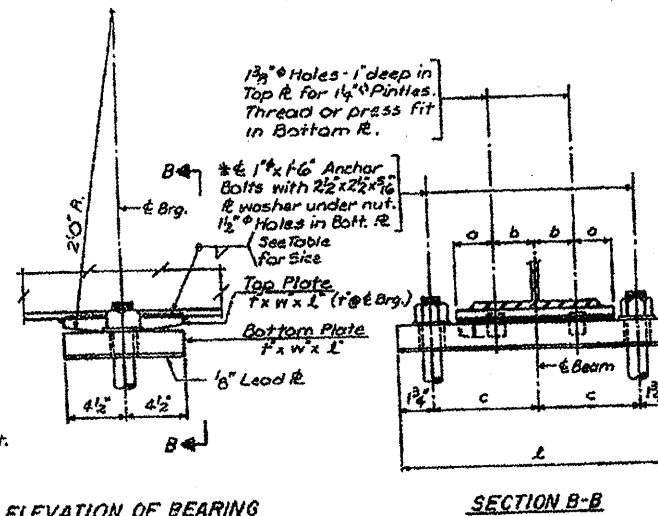
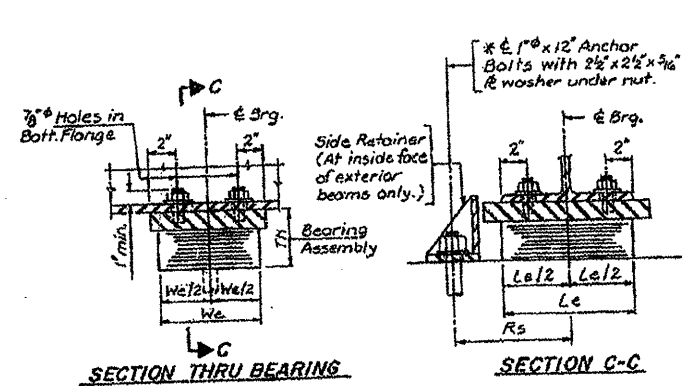
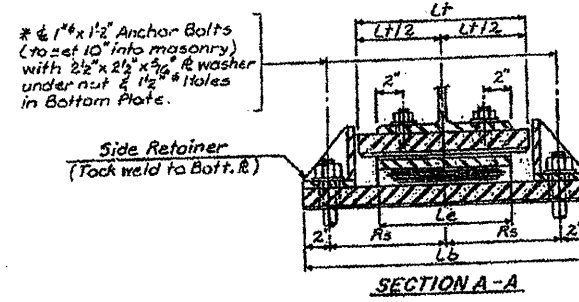
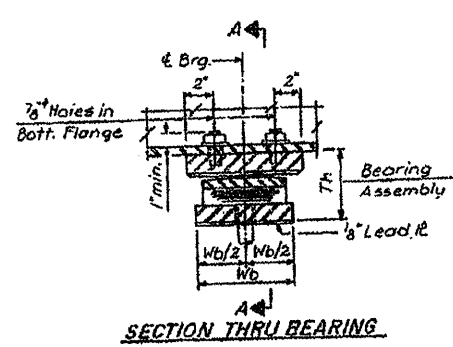
LOCATION 1 STRUCTURE NO. 029-0025
IL 95 OVER THE SPOON RIVER



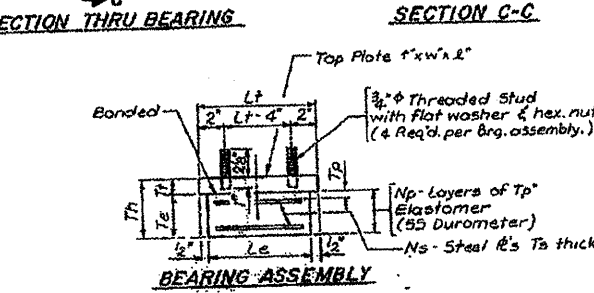
FILE NAME = 68996 4-29-2011.dgn	USER NAME = ing1stj	DESIGNED -	REVISED -	STATE OF ILLINOIS DEPARTMENT OF TRANSPORTATION	SCALE: _____ SHEET NO. _____ OF _____ SHEETS STA. _____ TO STA. _____	F.A. RTE. =	SECTION =	COUNTY =	TOTAL SHEETS =	SHEET NO. =
PLOT SCALE = 29.2896' / 1" IN.	CHECKED -	REVISED -	D4 Metrolizing 2011			EULION	19	5		
PLOT DATE = 2/18/2011	DATE -	REVISED -	CONTRACT NO. 68996							
						ILLINOIS FED. AID PROJECT				

INFORMATION ONLY

LOCATION 1 STRUCTURE NO. 029-0025
IL 95 OVER THE SPOON RIVER

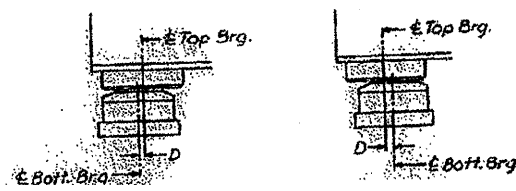
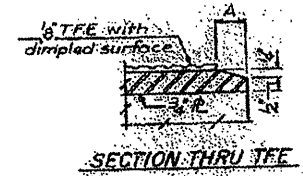
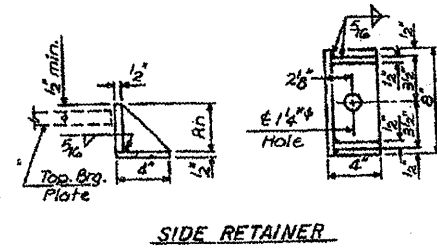
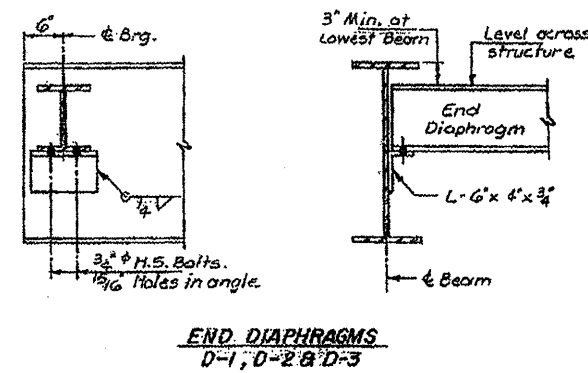
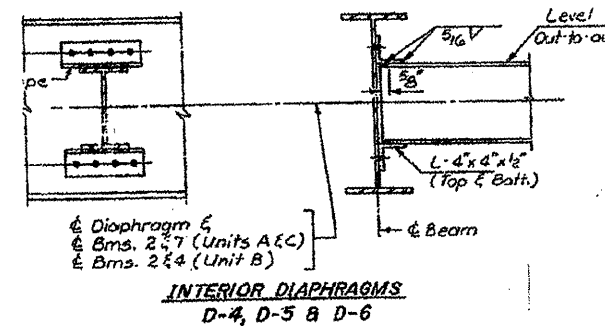
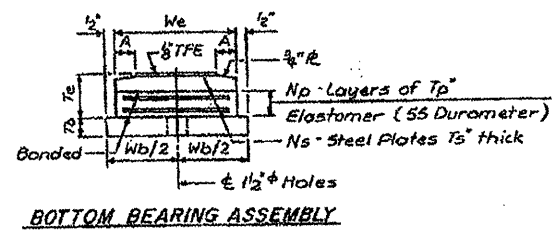
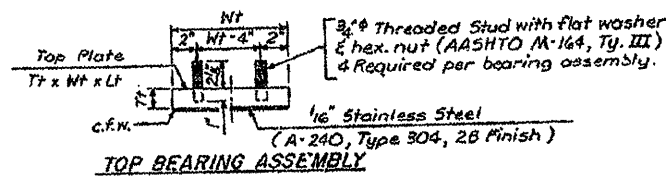


TYPE II ELASTOMERIC EXPANSION BEARING
(AT WEST ABUTMENT)
(AT PIER 1 - EAST & WEST BRGS.)
(AT PIER 2 - WEST BRGS.)



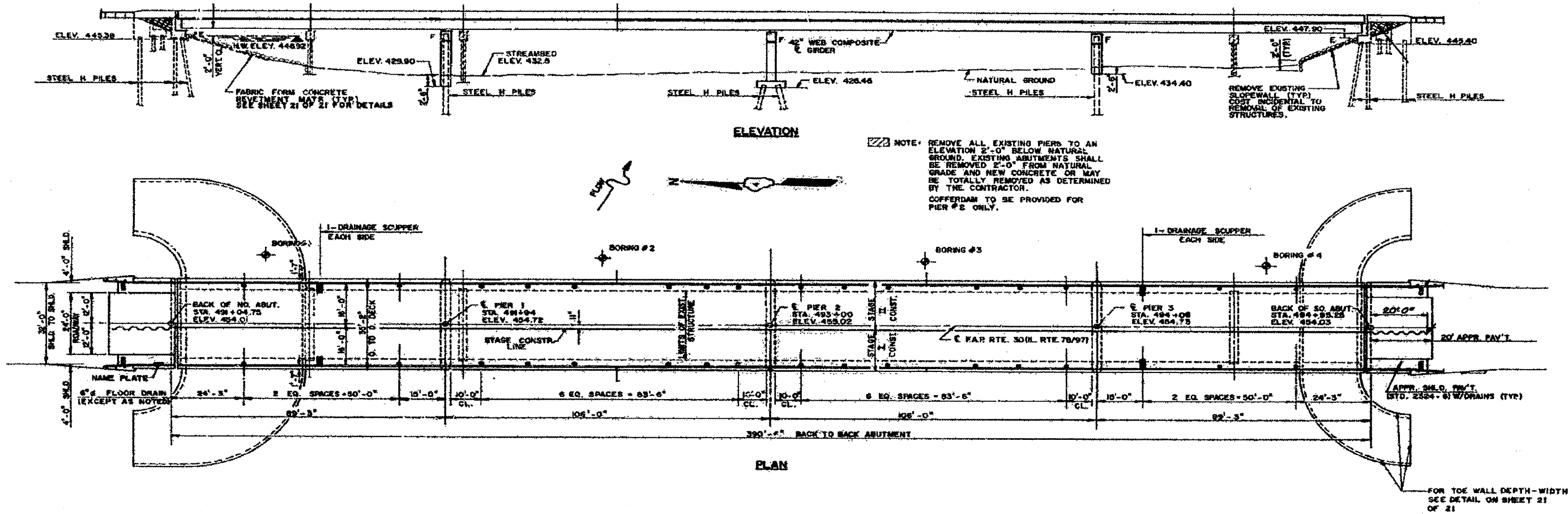
FIXED BEARING
(AT BENTS 2, 3, 4 & 5)
(AT PIERS 1A & 1B)

TYPE I ELASTOMERIC EXPANSION BEARING
(AT PIER 2 - EAST BRGS.)
(AT EAST ABUTMENT)



DIAPHRAGMS D-1 THRU D-6			
Diaph. Type	Size	Beam Spacing	No. Req'd.
D-1	W12x40	4'-9"	20
D-2	W12x40	4'-1"	8
D-3	W12x40	8'-0"	8
D-4	W12x35	4'-9"	50
D-5	W12x35	4'-1"	20
D-6	W16x36	8'-0"	40

LOCATION 2 STRUCTURE NO. 029-0055
IL 78 & 97
OVER SPOON RIVER OVERFLOW
INFORMATION ONLY

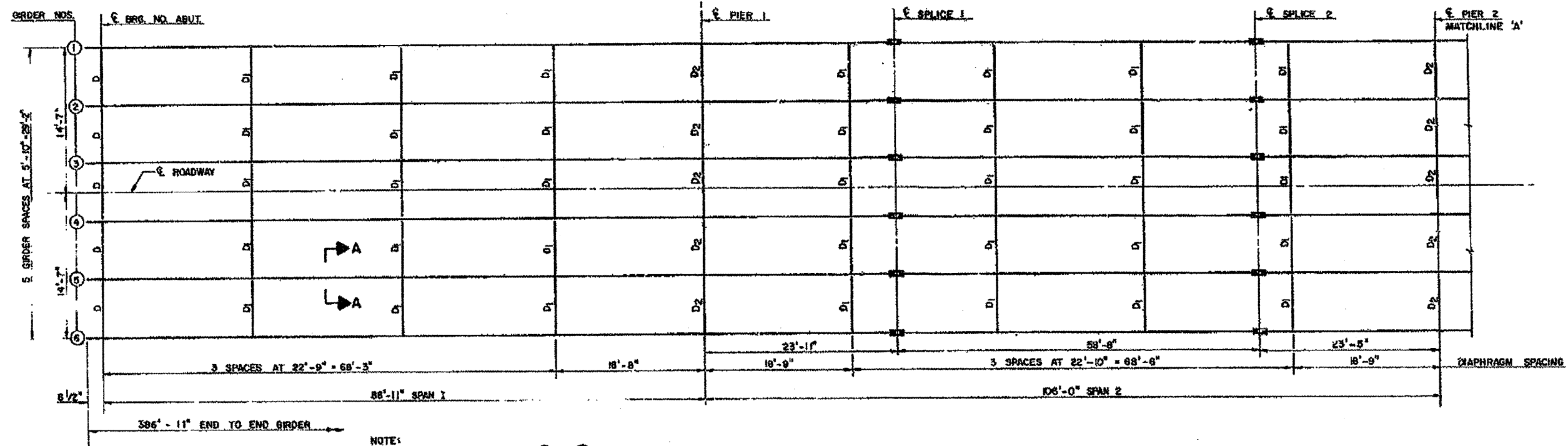


FILE NAME = 68996 4-29-2011.dgn	USER NAME = inglistj	DESIGNED -	REVISED -	STATE OF ILLINOIS DEPARTMENT OF TRANSPORTATION	SCALE: _____ SHEET NO. ____ OF ____ SHEETS STA. _____ TO STA. _____	F.A. RTE. _____	SECTION _____	COUNTY _____	TOTAL SHEETS _____	SHEET NO. _____	
	PLOT SCALE = 28.7755' / IN.	DRAWN -	REVISED -			VAR D4 Bridge Metalizing 2011	EULION	19	7	CONTRACT NO. 68996	
	PLOT DATE = 2/14/2011	CHECKED -	REVISED -			ILLINOIS FED. AID PROJECT					
		DATE -	REVISED -								

INFORMATION ONLY

LOCATION 2 STRUCTURE NO.029-0055

SPOON RIVER OVERFLOW

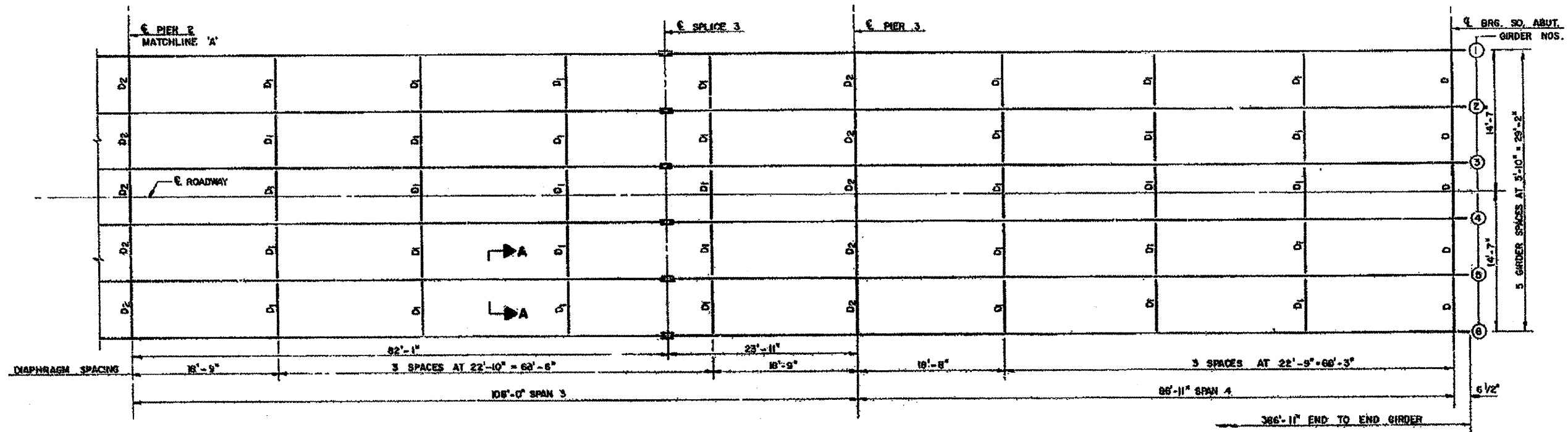


NOTE:
DIAPHRAGMS BETWEEN GIRDER ③ & ④
TO BE PLACED DURING STAGE II
CONSTRUCTION.

FRAMING PLAN
ALL GIRDERS 42"



D - END DIAPHRAGM (W12 x 40)
D₁ - INTERIOR DIAPHRAGM (W18 x 36)
D₂ - INTERIOR DIAPHRAGM AT PIERS (W18 x 36)

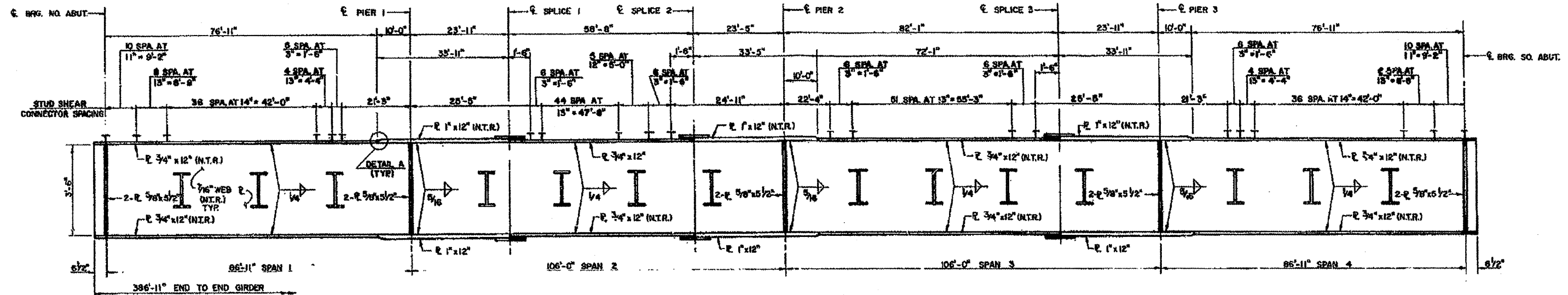


FRAMING PLAN
ALL GIRDERS 42"

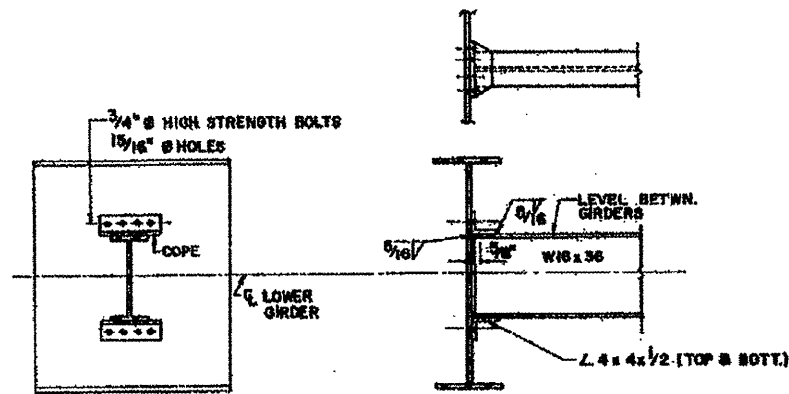


FILE NAME = 88996 4-29-2011.dgn	USER NAME = inglistj	DESIGNED -	REVISED -	STATE OF ILLINOIS DEPARTMENT OF TRANSPORTATION	SCALE: _____ SHEET NO. ____ OF ____ SHEETS STA. _____ TO STA. _____	F.A. ---	SECTION	COUNTY	TOTAL SHEETS	SHEET NO.
		DRAWN -	REVISED -			D4 Bridge Metallizing 20	EULION	19	8	
		CHECKED -	REVISED -			CONTRACT NO. 68996				
		DATE -	REVISED -			ILLINOIS FED. AID PROJECT				

LOCATION 2 STRUCTURE NO.029-0055 SPOON RIVER OVERFLOW

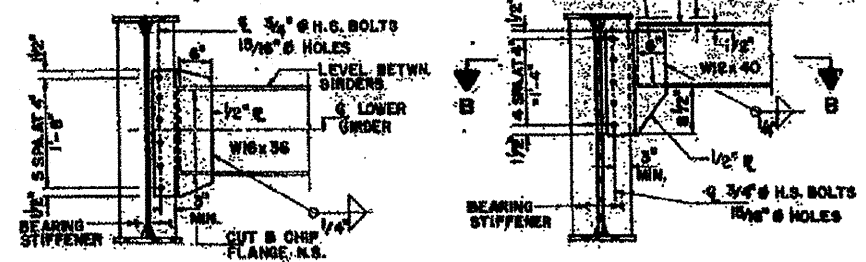


N.T.R. = NOTCH TOUGHNESS REQUIREMENTS



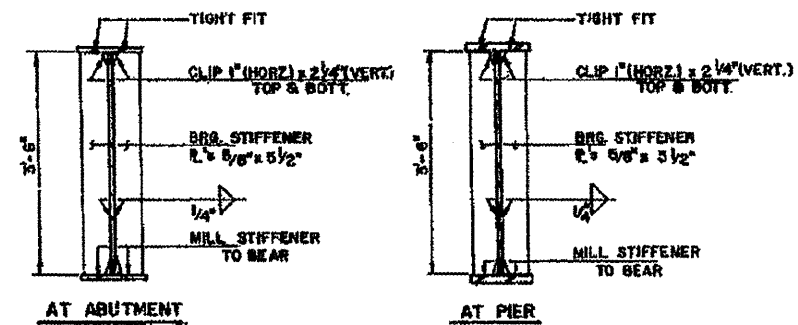
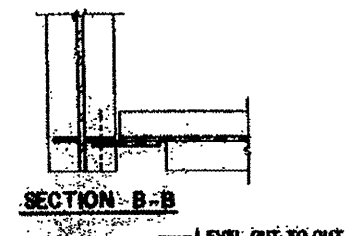
INTERIOR DIAPHRAGM D-1
(70 REQUIRED)

NOTES: ALL STRUCTURAL STEEL FOR DIAPHRAGMS SHALL BE AASHTO M103.
TWO HARDENED WASHERS SHALL BE REQUIRED OVER ALL 15/16" Ø HOLES IN DIAPHRAGM CONNECTIONS.



INTERIOR DIAPHRAGM AT PIER-D2
(16 REQUIRED)

END DIAPHRAGM D
(10 REQUIRED)



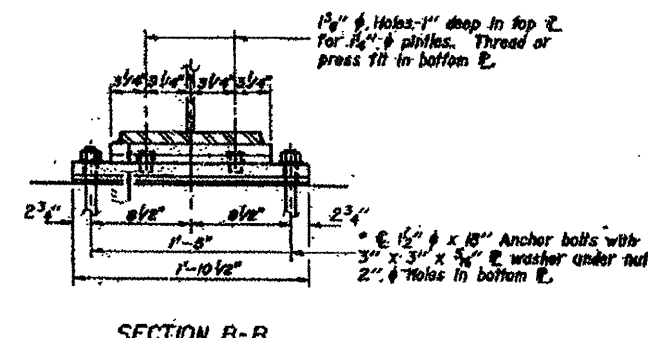
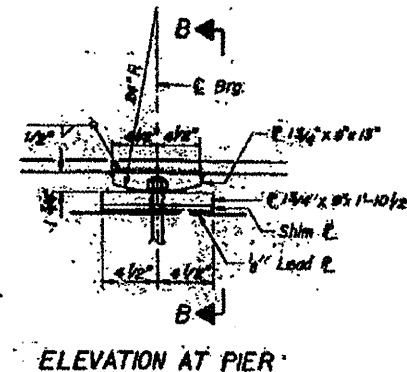
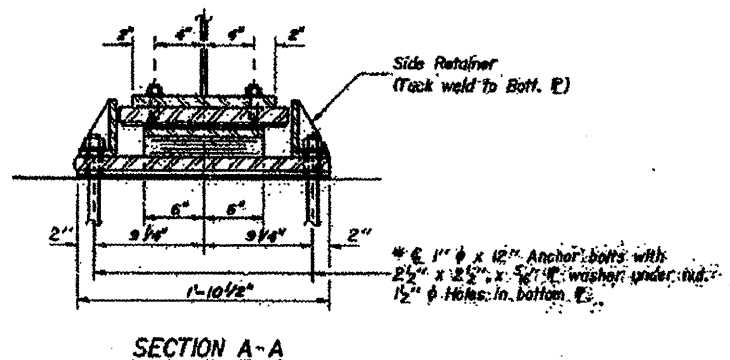
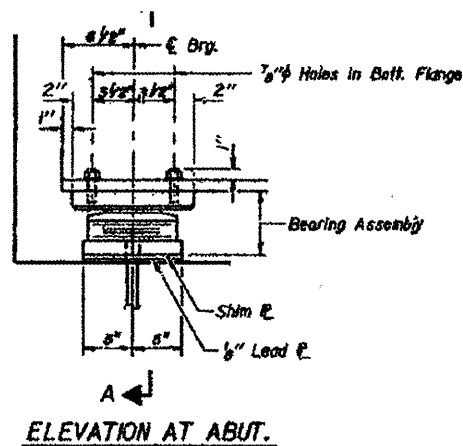
GIRDER SECTIONS

FILE NAME = 68996 4-29-2011.dgn	USER NAME = inglistj	DESIGNED -	REVISED -	STATE OF ILLINOIS DEPARTMENT OF TRANSPORTATION	SCALE: _____ SHEET NO. _____ OF _____ SHEETS STA. _____ TO STA. _____	SECTION D4 Bridge Metalizing 201	COUNTY FULTON	TOTAL SHEETS 19	SHEET NO. 8
		DRAWN -	REVISED -						
		CHECKED -	REVISED -						
		DATE -	REVISED -						
									CONTRACT NO. 68996
ILLINOIS FED. AID PROJECT									

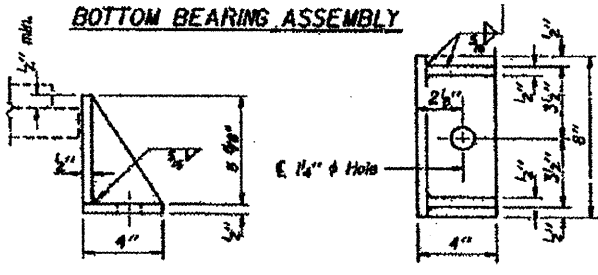
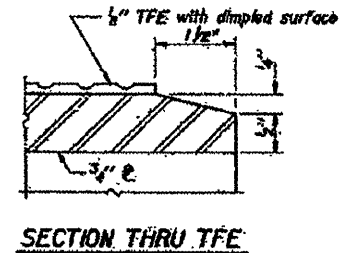
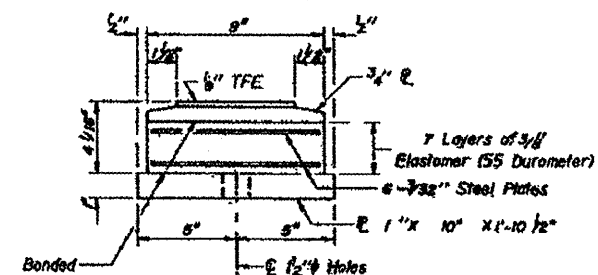
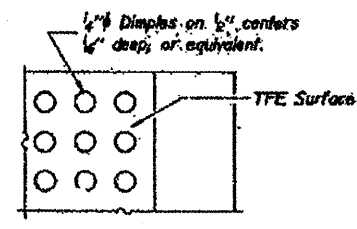
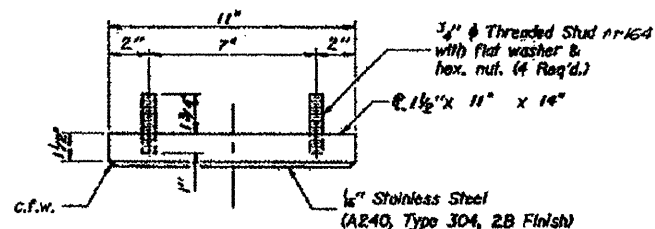
LOCATION 2 STRUCTURE NO.029-0055

SPoon RIVER OVERFLOW
INFORMATION ONLY

STATE OF ILLINOIS
DEPARTMENT OF TRANSPORTATION

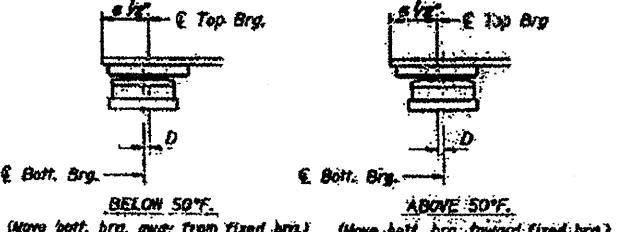


TYPE II TFE ELASTOMERIC EXP. BRG.
(At Abutments)



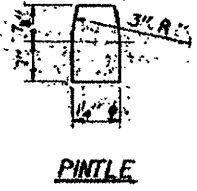
Note: The 1/2" TFE sheet shall be bonded directly to the top steel plate with a two-component, medium viscosity epoxy resin conforming to the requirements of the Federal Specification MM-A-134, Type I. The bond agent shall be applied on the full area of the contact surfaces.

Bonding of 1/2" TFE sheet during vulcanizing process shall be permitted provided the process and method of adjusting assembly height is approved by the Engineer.



Note: Anchor bolts at fixed bearings may be bolted into the masonry. See sheet 010 for Anchor Bolt Installation.

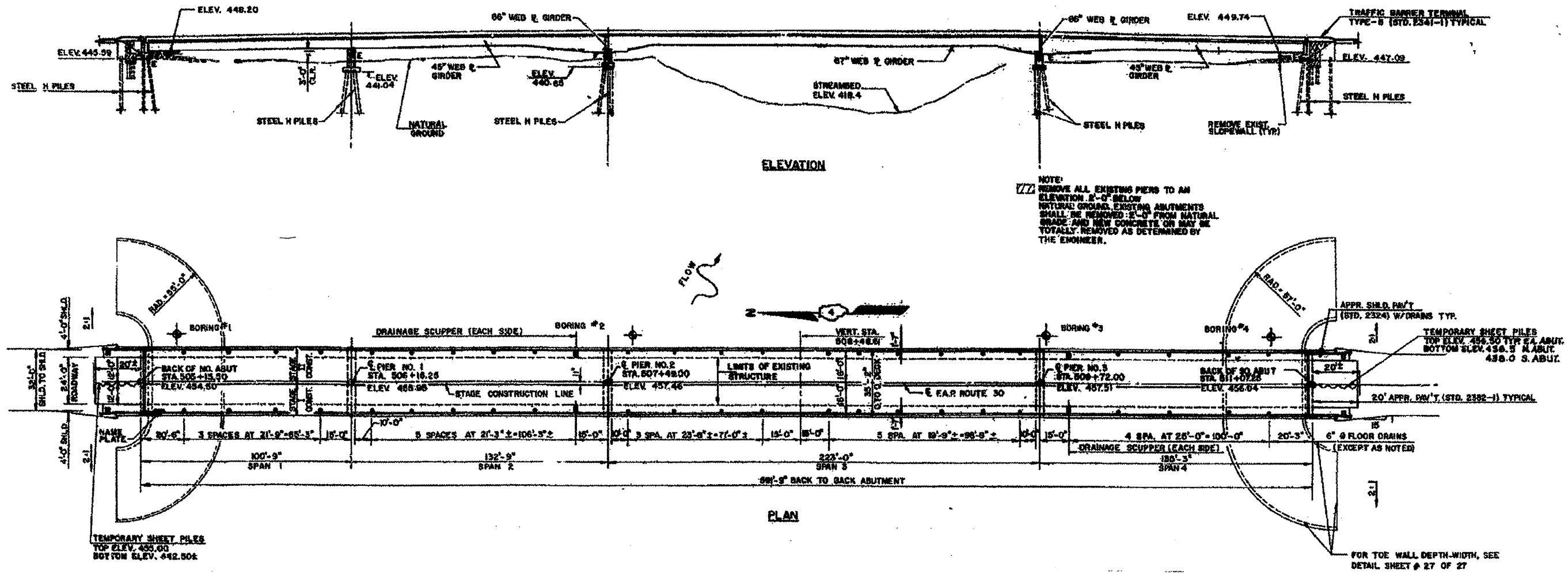
FIXED BEARING
(At Piers)
(If Required)
All structural steel for fixed bearings at piers shall be AASHTO M223, GR 50



FILE NAME = 68996 4-29-2011.dgn	USER NAME = unglstj	DESIGNED -	REVISED -	STATE OF ILLINOIS DEPARTMENT OF TRANSPORTATION	SCALE: _____ SHEET NO. _____ OF _____ SHEETS STA. _____ TO STA. _____	F.A. SECTION COUNTY TOTAL SHEETS SHEET NO.
		DRAWN -	REVISED -			04 Bridge Metalizing 2011 ILLION 19 10
		CHECKED -	REVISED -			CONTRACT NO. 68996
		DATE -	REVISED -			ILLINOIS FED. AID PROJECT

LOCATION 3 STRUCTURE NO. 029-0056

IL 78 & 97
OVER SPOON RIVER
INFORMATION ONLY



FILE NAME = 68996 4-29-2011.dgn

USER NAME = inglistj
PLOT SCALE = 28,8372' / IN.
PLOT DATE = 2/14/2011

DESIGNED - ---
DRAWN - ---
CHECKED - ---
DATE - ---

REVISED - ---
REVISED - ---
REVISED - ---
REVISED - ---

STATE OF ILLINOIS
DEPARTMENT OF TRANSPORTATION

SCALE: _____ SHEET NO. _____ OF _____ SHEETS STA. _____ TO STA. _____

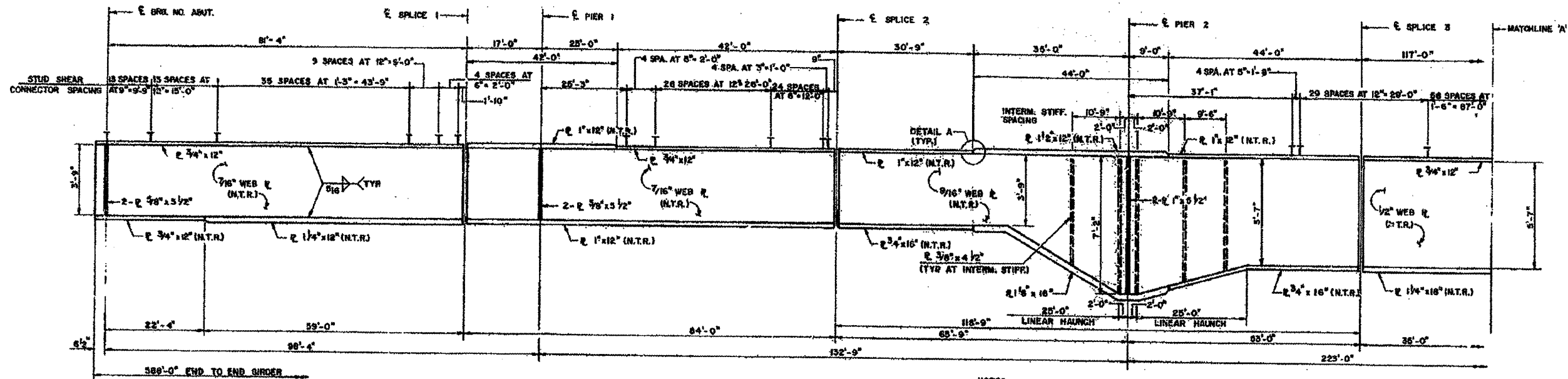
F.A. RTE.	SECTION	COUNTY	TOTAL SHEETS	SHEET NO.
D4	Bridge Metalizing 201	EULTON	19	11
CONTRACT NO. 68996			ILLINOIS FED. AID PROJECT	

LOCATION 3 STRUCTURE NO. 029-0056

IL 78 & 97

OVER SPOON RIVER

INFORMATION ONLY

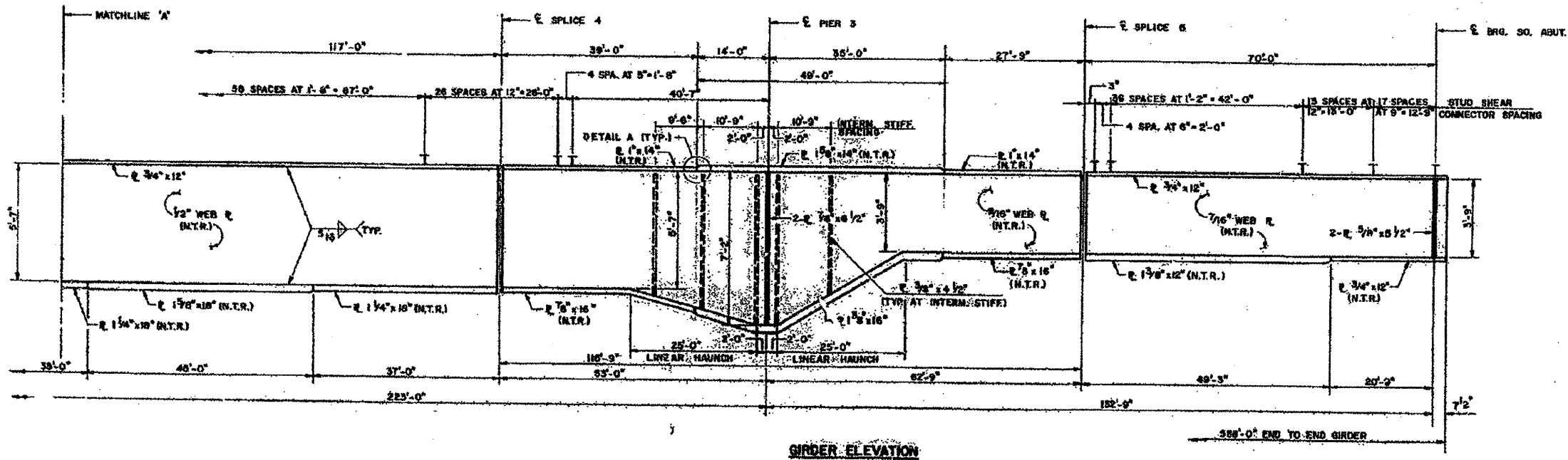


N.T.R. = NOTCH TOUGHNESS REQUIREMENTS.

GIRDER ELEVATION

(ALL GIRDER STEEL IS AASHTO M223, GR. 50 & ALL INTERN. STIFF. STEEL IS AASHTO M183.)

NOTES:
 FOR FRAMING PLAN, SEE SHEET #9 OF 27.
 FOR MISCELLANEOUS FRAMING DETAILS, SEE SHEET #11 OF 27.
 FOR FIELD SPLICE DETAILS, SEE SHEET #12 OF 27.
 FOR FRAMING DETAILS, SEE SHEET #13 OF 27.



GIRDER ELEVATION

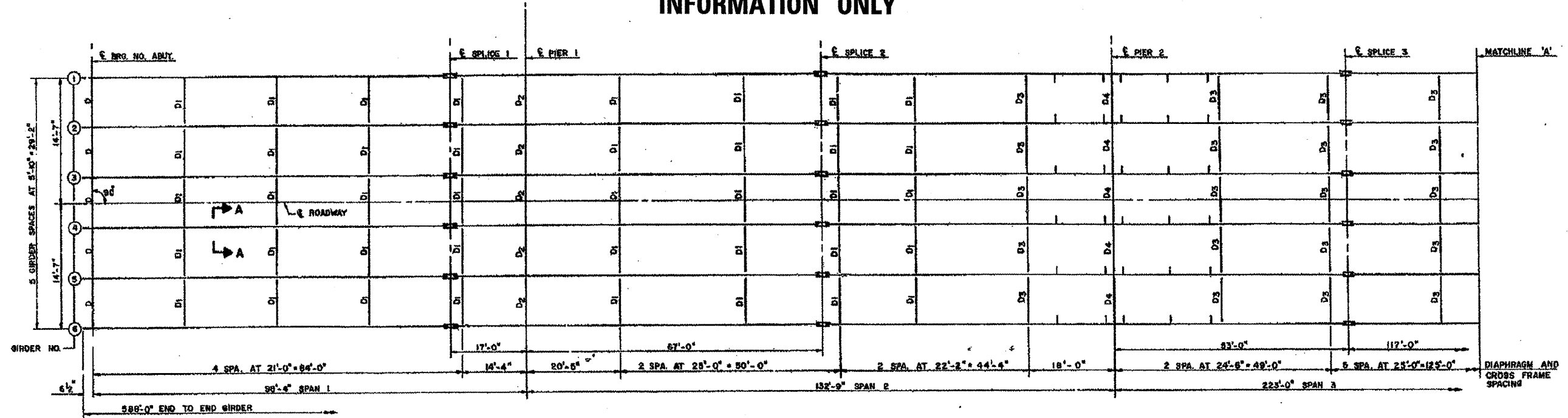
FILE NAME = 68996 4-29-2011.dgn	USER NAME = inglistj	DESIGNED -	REVISED -	STATE OF ILLINOIS DEPARTMENT OF TRANSPORTATION	SCALE: _____ SHEET NO. ____ OF ____ SHEETS STA. _____ TO STA. _____	F.A. RTE: _____	SECTION 04 Bridge Metalizing 201	COUNTY EULION	TOTAL SHEETS 18	SHEET NO. 12	
	PLOT SCALE = 28.7846' / IN.	DRAWN -	REVISED -								
	PLOT DATE = 2/14/2011	CHECKED -	REVISED -								
		DATE -	REVISED -								
						CONTRACT NO. 68996		ILLINOIS FED. AID PROJECT			

LOCATION 3 STRUCTURE NO. 029-0056

IL 78 & 97

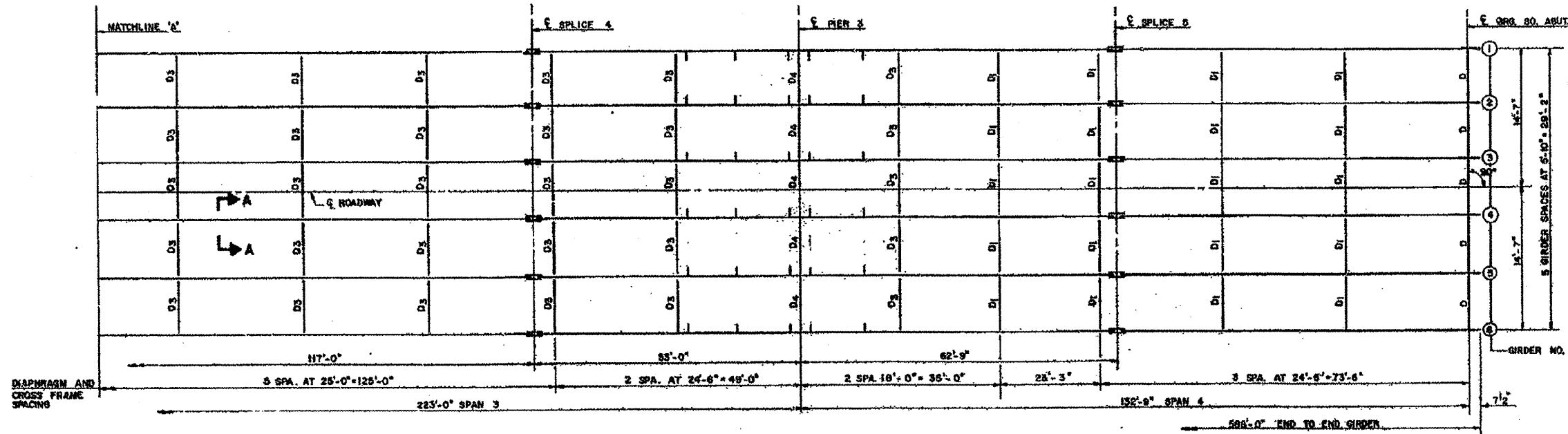
OVER SPOON RIVER

INFORMATION ONLY



NOTES: DIAPHRAGM* AND CROSS FRAMES BETWEEN GIRDERS ③ & ④ TO BE PLACED DURING STAGE II CONSTRUCTION.

FRAMING PLAN



FRAMING PLAN



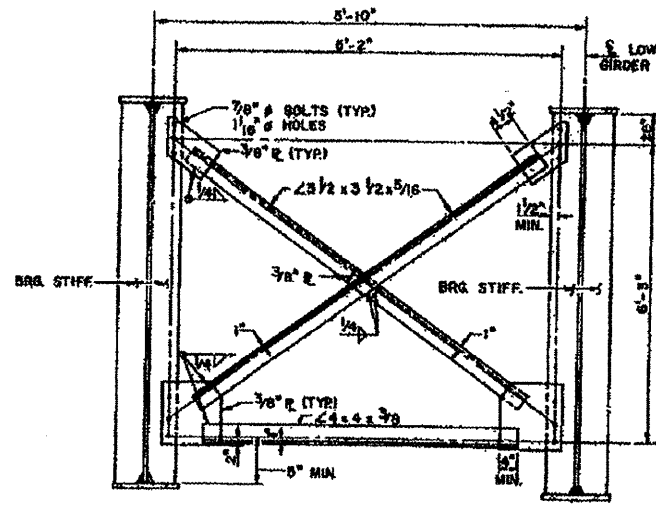
FILE NAME = 68996 4-29-2011.dgn	USER NAME = inglistj	DESIGNED -	REVISED -	STATE OF ILLINOIS DEPARTMENT OF TRANSPORTATION	F.A. RTE. =	SECTION = 04 Bridge Metalizing 201	COUNTY = EULION	TOTAL SHEETS = 19	SHEET NO. = 13
	PLOT SCALE = 28.7846' / IN.	DRAWN -	REVISED -		SCALE: _____	CONTRACT NO. 68996		ILLINOIS FED. AID PROJECT	
	PLOT DATE = 2/14/2011	CHECKED -	REVISED -		SHEET NO. _____ OF _____ SHEETS				
		DATE -	REVISED -		STA. _____ TO STA. _____				

LOCATION 3 STRUCTURE NO. 029-0056

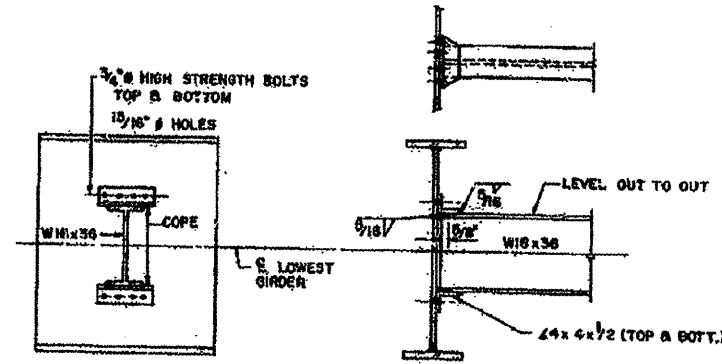
IL 78 & 97

OVER SPOON RIVER

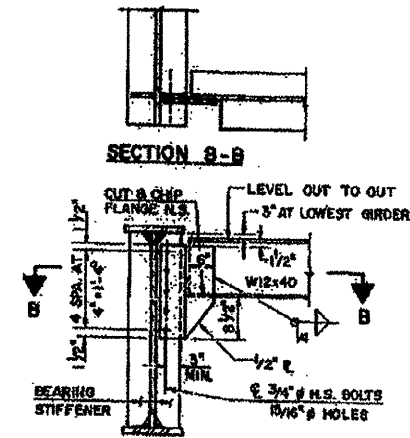
INFORMATION ONLY



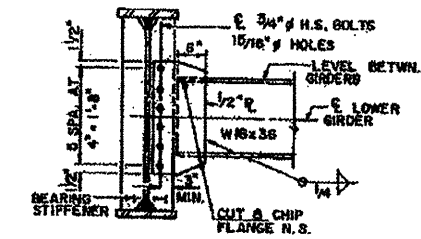
INTERIOR CROSS FRAMES AT PIERS 2 & 3 - D4
(10 REQUIRED)



INTERIOR DIAPHRAGM - D1
(80 REQUIRED)

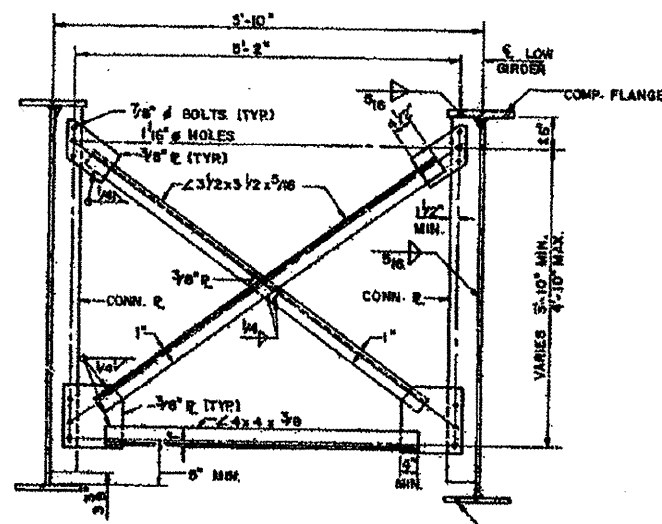


END DIAPHRAGM - D
(10 REQUIRED)

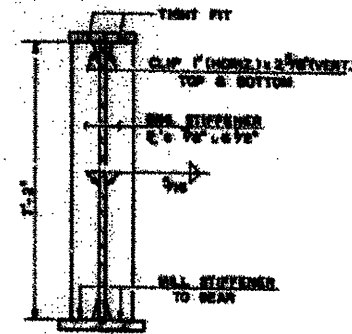


INTERIOR DIAPHRAGM AT PIER 1 - D2
(8 REQUIRED)

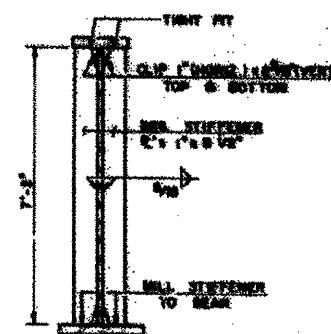
NOTE: HARDENED WASHERS SHALL BE REQUIRED OVER ALL HOLES IN DIAPHRAGM AND CROSS FRAME CONNECTIONS.



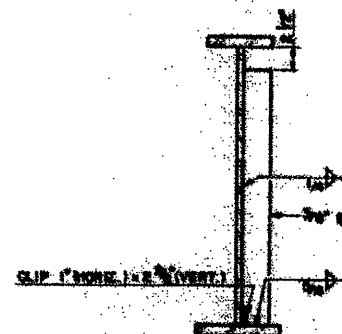
INTERIOR CROSS FRAME - D3
(80 REQUIRED)



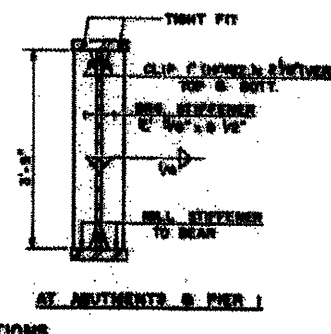
AT PIER 3



AT PIER 2



INTERMEDIATE STIFFENER DETAIL



AT ABUTMENTS & PIER 1

GIRDER SECTIONS

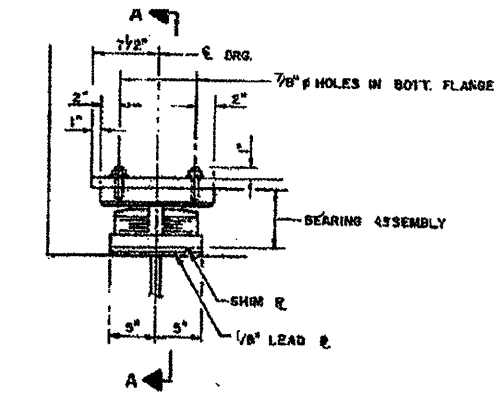
FILE NAME = 68996 4-29-2011.dgn	USER NAME = sng11x1j	DESIGNED -	REVISED -	STATE OF ILLINOIS DEPARTMENT OF TRANSPORTATION	F.A. -	SECTION	COUNTY	TOTAL SHEETS	SHEET NO.
		DRAWN -	REVISED -		VAR	D4 Bridge Metalizing 2011	EULTON	19	14
		CHECKED -	REVISED -		SCALE: _____	CONTRACT NO. 68996		ILLINOIS FED. AID PROJECT	
		DATE	REVISED -		SHEET NO. _____ OF _____ SHEETS	STA. _____ TO STA. _____			

LOCATION 3 STRUCTURE NO. 029-0056

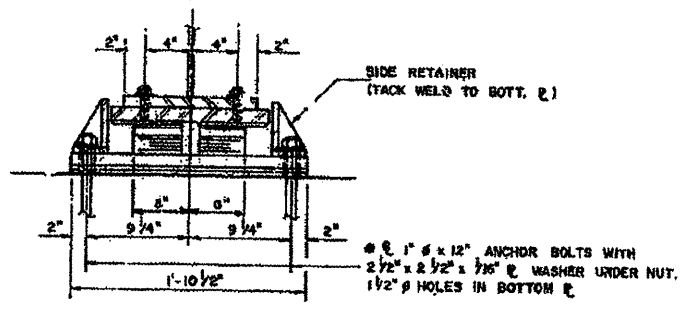
IL 78 & 97

OVER SPOON RIVER

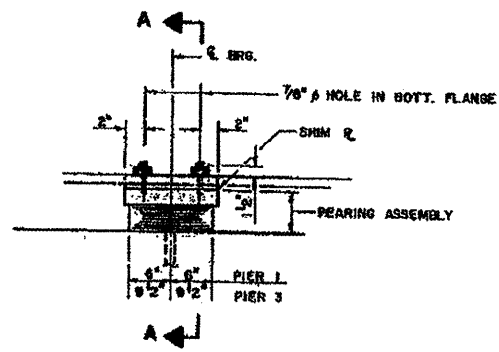
INFORMATION ONLY



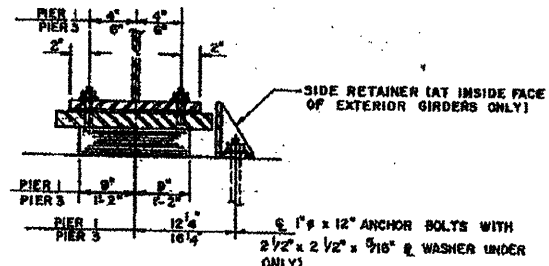
ELEVATION AT SOUTH ABUT.



SECTION A-A



ELEVATION AT PIERS 1 & 3

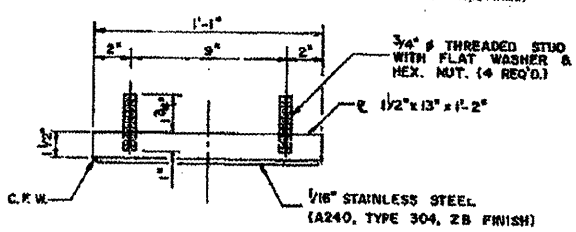


SECTION A-A

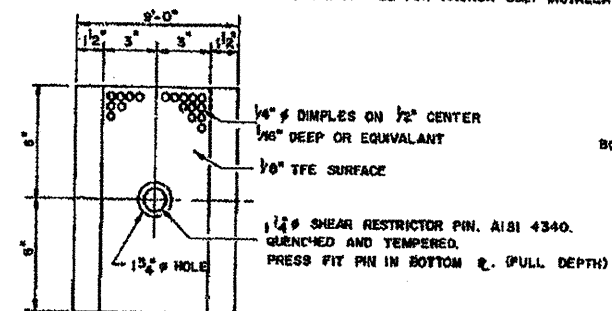
TYPE III ELASTOMERIC EXP. BRG. (AT SOUTH ABUT.)
(6 REQUIRED)

SEE SHEET #23 FOR ANCHOR BOLT INSTALLATION.

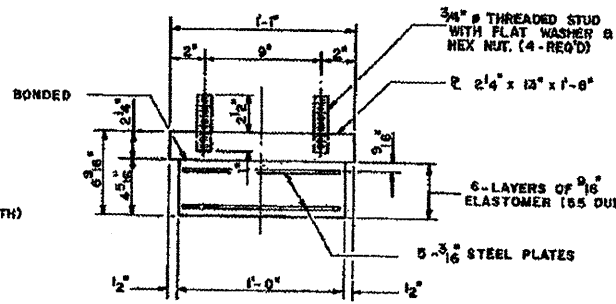
TYPE I ELASTOMERIC EXP. BRG.
(12 REQUIRED)



TOP BEARING ASSEMBLY

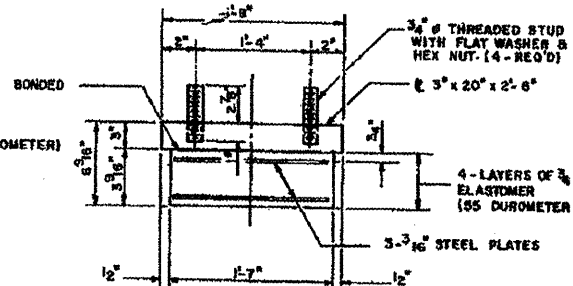


PLAN-TFE ELASTOMERIC BRG.



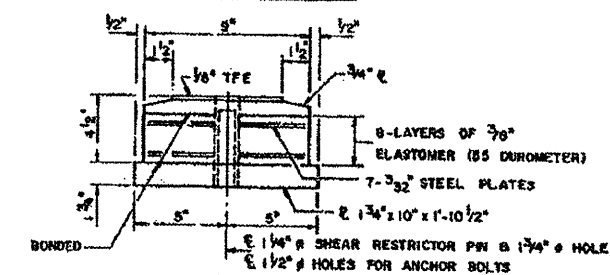
BEARING ASSEMBLY
PIER 1

NOTE: SHIM PLATES SHALL NOT BE PLACED UNDER BEARING ASSEMBLY.

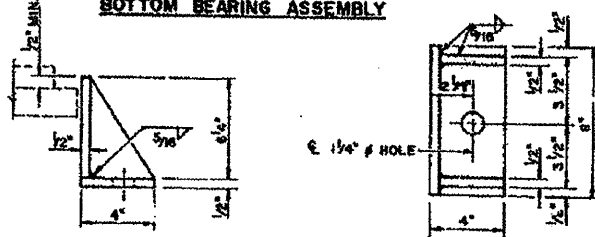


BEARING ASSEMBLY
PIER 3

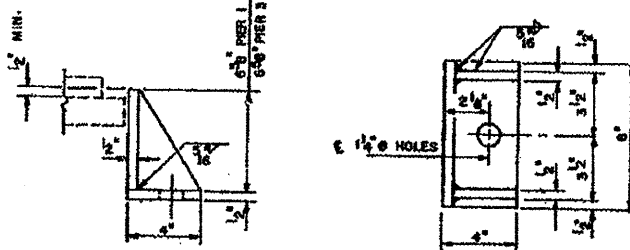
NOTE: SHIM PLATES SHALL NOT BE PLACED UNDER BEARING ASSEMBLY.



BOTTOM BEARING ASSEMBLY



SIDE RETAINER
EQUIVALENT ROLLED ANGLE WITH STIFFENERS
WILL BE ALLOWED IN LIEU OF WELDED PLATES.



SIDE RETAINER
EQUIVALENT ROLLED ANGLE WITH STIFFENERS
WILL BE ALLOWED IN LIEU OF WELDED PLATES.

BILL OF MATERIAL

Item	Unit	Total
Elastomeric Bearing Assembly Type I	Each	12
Elastomeric Bearing Assembly Type III	Each	6

FILE NAME = 68996 4-29-2011.dgn
USER NAME = inglistj
DESIGNED -
DRAWN -
PLOT SCALE = 28.7838' / IN.
CHECKED -
PLOT DATE = 2/14/2011
DATE -

DESIGNED -
DRAWN -
CHECKED -
DATE -

REVISD -
REVISD -
REVISD -
REVISD -

REVISD -
REVISD -
REVISD -
REVISD -

STATE OF ILLINOIS
DEPARTMENT OF TRANSPORTATION

SCALE: SHEET NO. OF SHEETS STA. TO STA.

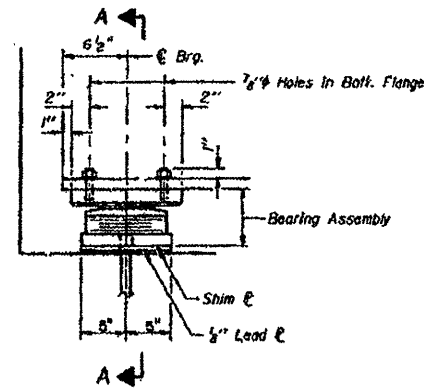
F.A. SECTION COUNTY TOTAL SHEETS SHEET NO.
RTE. 04 Bridge Metalizing 2011 ILLINOIS 19 15
VAR
CONTRACT NO. 68996
ILLINOIS FED. AID PROJECT

LOCATION 3 STRUCTURE NO. 029-0056

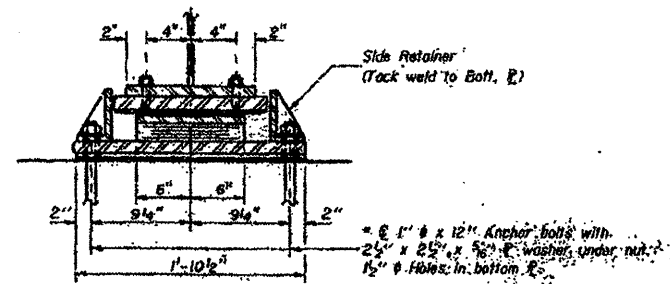
IL 78 & 97

OVER SPOON RIVER

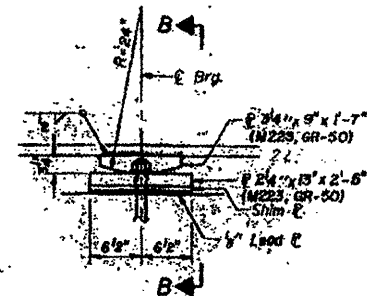
INFORMATION ONLY



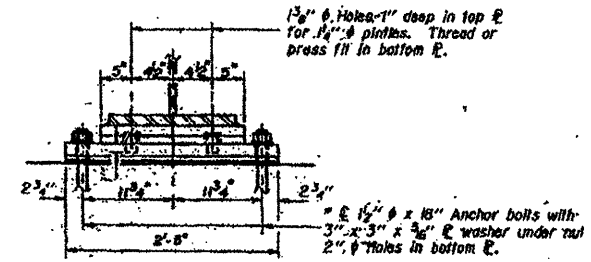
ELEVATION AT NORTH ABUT.



SECTION A-A

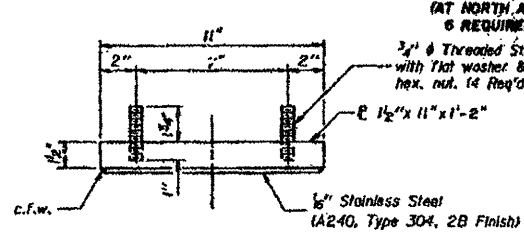


ELEVATION AT PIER 2

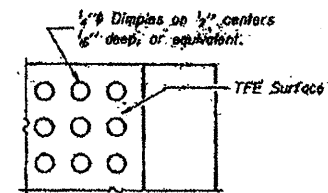


SECTION B-B

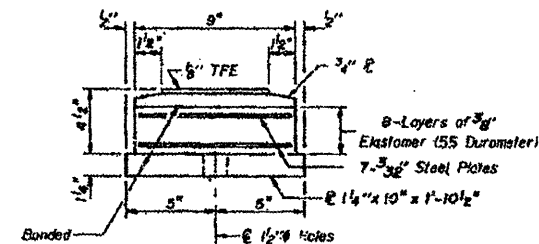
TYPE II TFE ELASTOMERIC EXP. BRG.



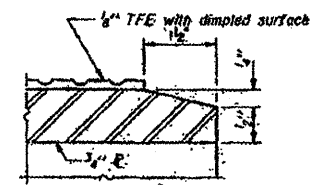
TOP BEARING ASSEMBLY



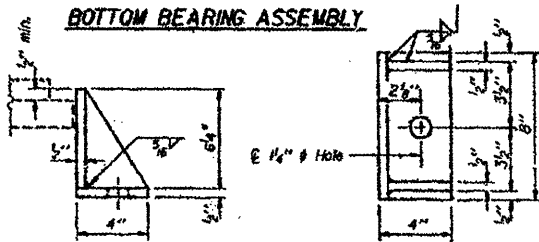
PLAN-TFE SURFACE



BOTTOM BEARING ASSEMBLY

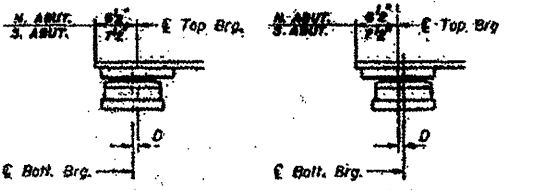


SECTION THRU TFE



SIDE RETAINER

Equivalent rolled angle with stiffeners will be allowed in lieu of welded plates.



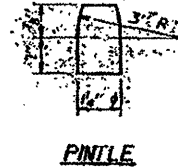
BELOW SOLE

ABOVE SOLE

(Move bottom bearing away from fixed bearing) (Move bottom bearing toward fixed bearing)

* Notes: Anchor bolts of fixed bearings may be built into the masonry. See sheet #23 for Anchor Bolt Installation.

FIXED BEARING (AT PIER 2) 6 REQUIRED



PINILE

Note: The 1/4" TFE sheet shall be bonded directly to the top steel plate with a two-component, medium viscosity epoxy resin conforming to the requirements of the Federal Specification, MIL-A-134, Type I. The bond agent shall be applied on the full area of the contact surfaces.

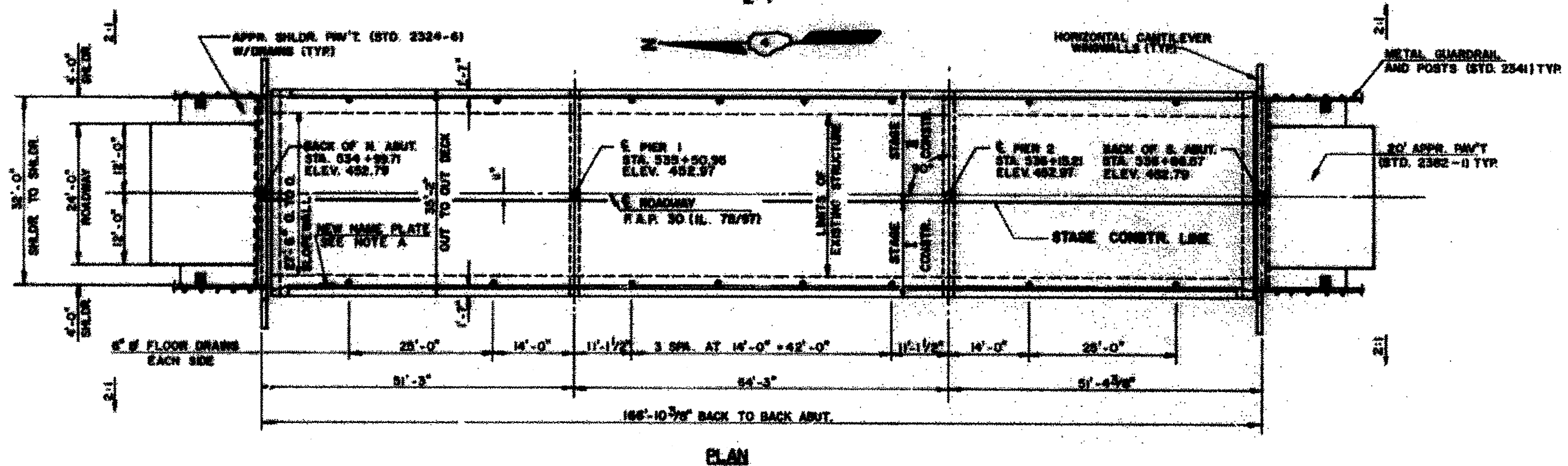
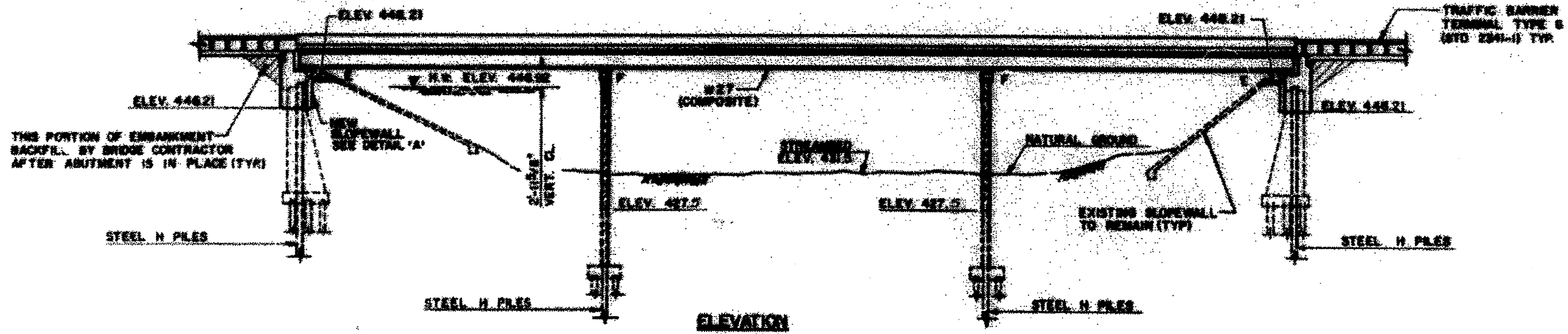
Bonding of 1/4" TFE sheet during vulcanizing process will be permitted provided the process and method of adjusting assembly height is approved by the Engineer.

FILE NAME = 68996 4-29-2811.dgn	USER NAME = inglistj	DESIGNED -	REVISED -	STATE OF ILLINOIS DEPARTMENT OF TRANSPORTATION	SCALE: _____ SHEET NO. _____ OF _____ SHEETS STA. _____ TO STA. _____	F.A. RTE. _____	SECTION _____	COUNTY _____	TOTAL SHEETS _____	SHEET NO. _____
	PLOT SCALE = 28.7483' / IN.	DRAWN -	REVISED -			var D4 Bridge Metalizing 2011	EUILTON	19	16	
	PLOT DATE = 2/14/2811	CHECKED -	REVISED -			CONTRACT NO. 68996				
		DATE -	REVISED -			ILLINOIS FED. AID PROJECT				

LOCATION 4 STRUCTURE NO. 029-0021

IL 78 & 97

OVER LACY DITCH
INFORMATION ONLY

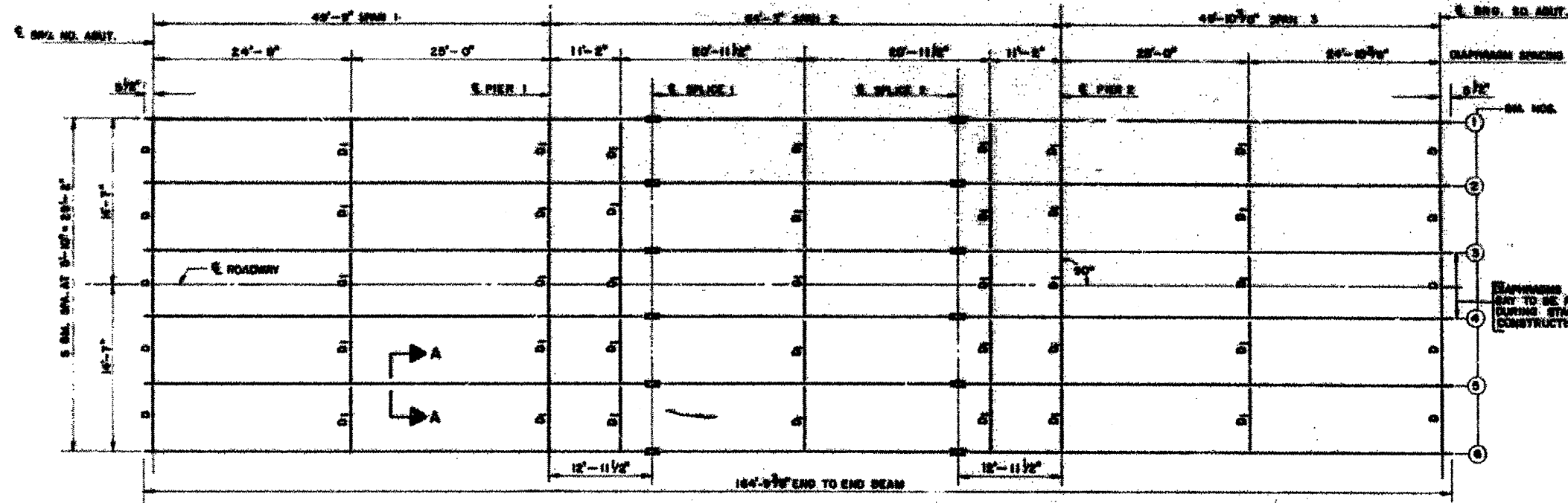


FILE NAME = 68996 4-29-2011.dgn	USER NAME = ing1stj	DESIGNED - DRAWN -	REVISED - REVISED -	STATE OF ILLINOIS DEPARTMENT OF TRANSPORTATION	SCALE: _____ SHEET NO. _____ OF _____ SHEETS STA. _____ TO STA. _____	F.A. - RTE. - var D4 Bridge Metalizing 201	SECTION	COUNTY	TOTAL SHEETS	SHEET NO.	
PLOT SCALE = 28.7968' / IN.	CHECKED -	REVISED -									
PLOT DATE = 2/14/2011	DATE -	REVISED -									
						CONTRACT NO. 68996		ILLINOIS FED. AID PROJECT			

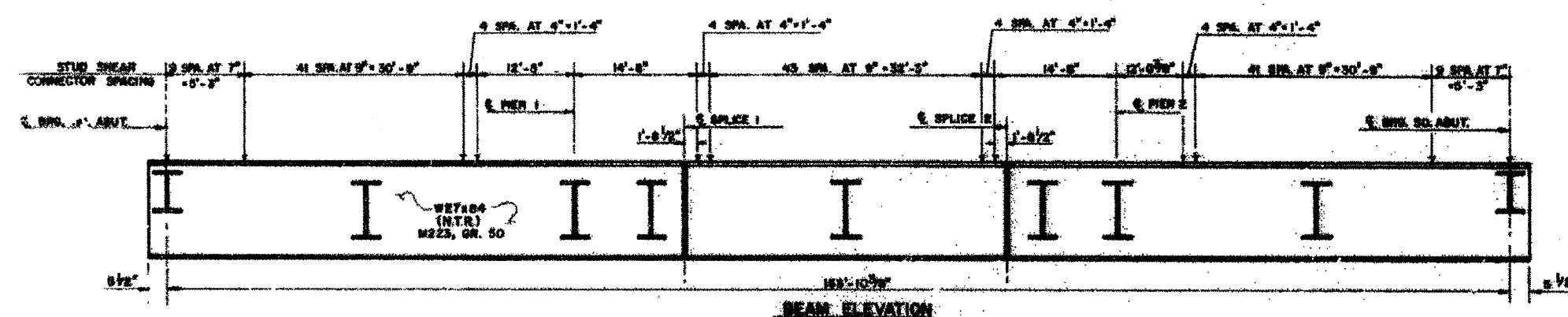
LOCATION 4 STRUCTURE NO. 029-0021

IL 78 & 97

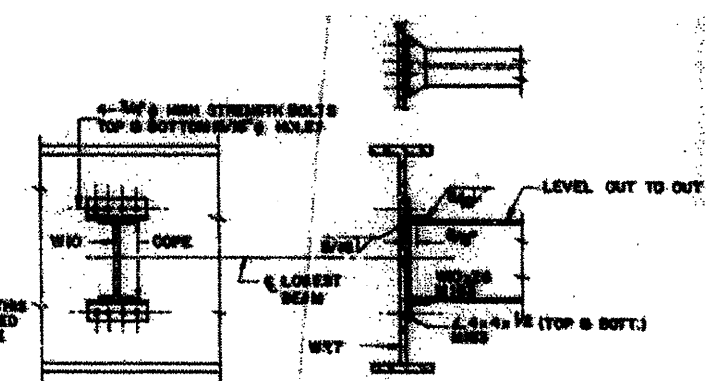
OVER LACY DITCH
INFORMATION ONLY



FRAMING PLAN
D- END DIAPHRAGM (W12 x 40)
Di- INTERIOR DIAPHRAGM (W10 x 20)

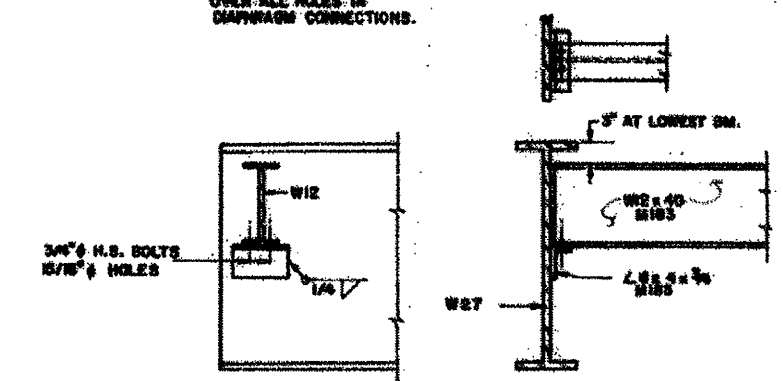


BEAM ELEVATION



INTERIOR DIAPHRAGM D
(38 REQUIRED)

NOTE: HARDENED WASHERS SHALL BE REQUIRED OVER ALL HOLES IN DIAPHRAGM CONNECTIONS.



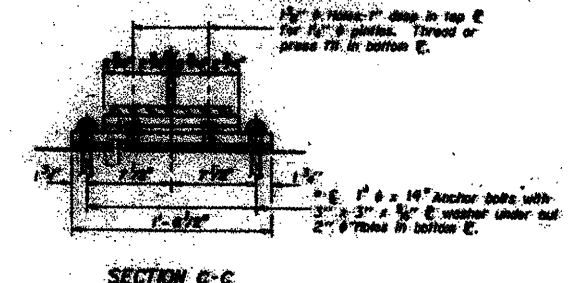
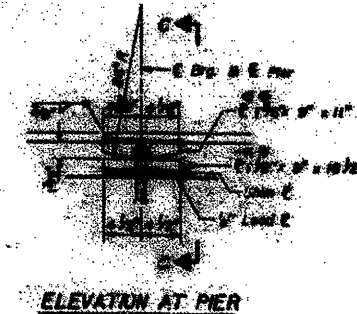
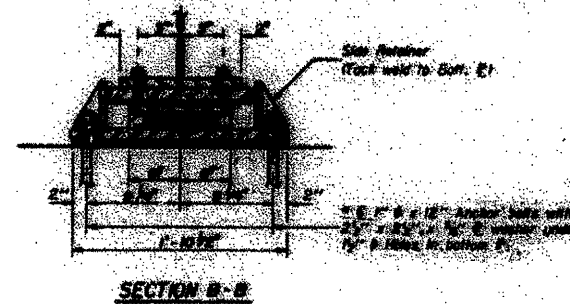
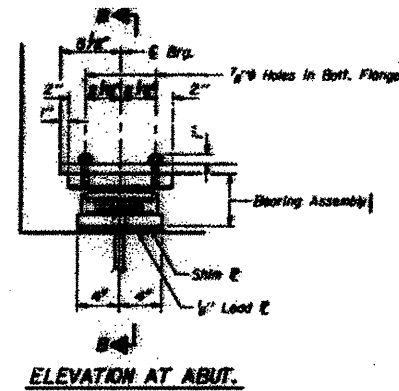
END DIAPHRAGM D
(10 REQUIRED)

FILE NAME = 68996 4-29-2011.dgn	USER NAME = inglistj	DESIGNED -	REVISED -	STATE OF ILLINOIS DEPARTMENT OF TRANSPORTATION	SCALE: _____ SHEET NO. _____ OF _____ SHEETS STA. _____ TO STA. _____	F.A. -	SECTION	COUNTY	TOTAL SHEETS	SHEET NO.	
		DRAWN -	REVISED -			var	04 Bridge Metalizing 201	FULTON	19	18	
		CHECKED -	REVISED -			CONTRACT NO. 68996					
		DATE -	REVISED -			ILLINOIS FED. AID PROJECT					

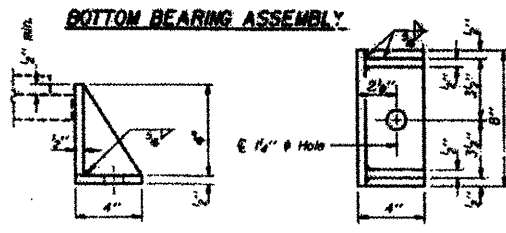
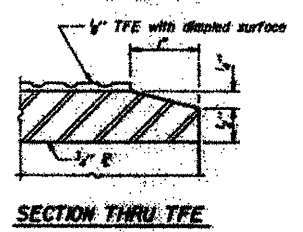
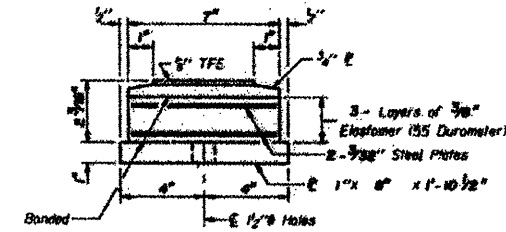
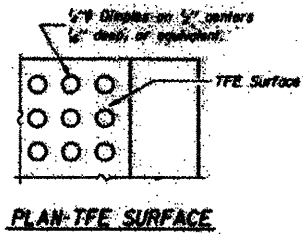
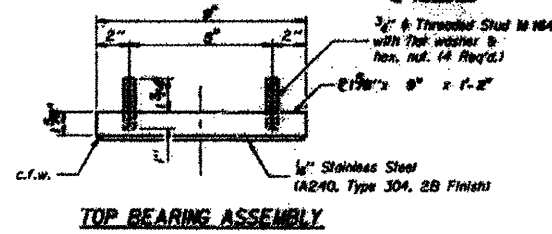
LOCATION 4 STRUCTURE NO. 029-0021

IL 78 & 97

OVER LACY DITCH
INFORMATION ONLY

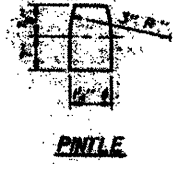
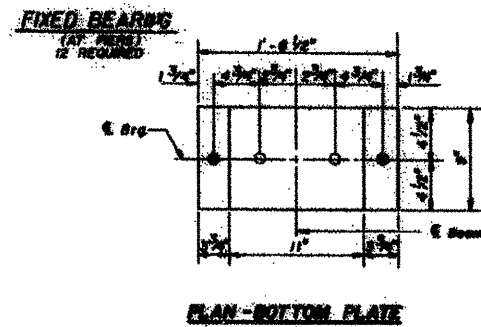
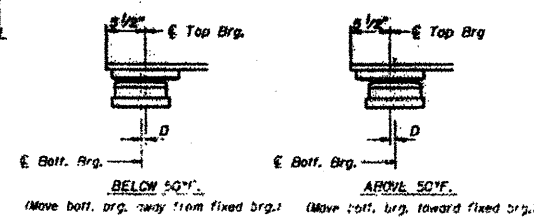


TYPE II TFE ELASTOMERIC EXP. BRG.



Note: The 1/4" TFE sheet shall be bonded directly to the top steel plate with a two-component, medium viscosity epoxy resin, conforming to the requirements of the Federal Specification WMM-A-134, Type I. The bond agent shall be applied on the full area of the contact surfaces.

Bonding of 1/4" TFE sheet during vulcanizing process will be permitted provided the process and method of adjusting assembly height is approved by the Engineer.



BILL OF MATERIAL

Part	Unit	Total
Elastomeric Bearing Assembly Type II	Each	12