

STATE OF ILLINOIS
DEPARTMENT OF TRANSPORTATION
DIVISION OF HIGHWAYS
PROPOSED
HIGHWAY PLANS

F.A.P. RTE.	SECTION	COUNTY	TOTAL SHEETS	SHEET NO.
721	(113RS-4, 124RS)	DEWITT	153	1
		ILLINOIS	CONTRACT NO. 70660	

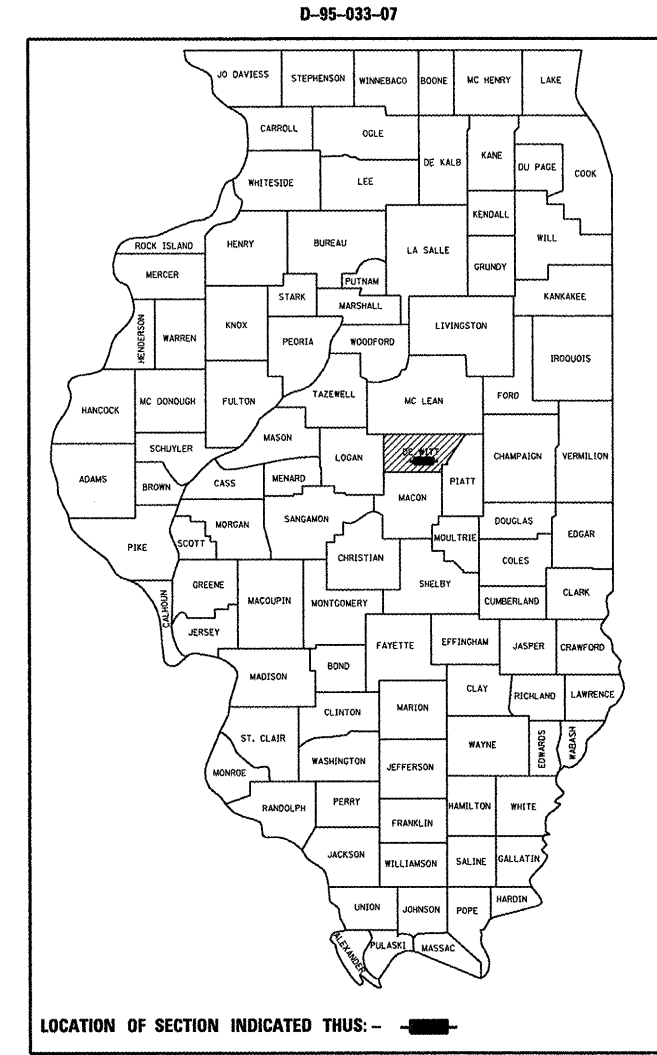
FOR INDEX OF SHEETS, SEE SHEET NO. 2
 FOR SUMMARY OF QUANTITIES, SEE SHEET NO. 5-7

STRUCTURE INFORMATION

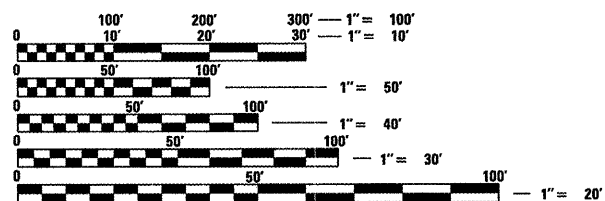
S.N.	SCOPE OF WORK
020-8042 (PROP.)	CULVERT REPLACEMENT
020-8028	HMA RESURFACING
020-8043	HMA RESURFACING
020-8029	HMA RESURFACING
020-0062	OMISSION
020-8030	HMA RESURFACING
020-8031	HMA RESURFACING

F.A.P. ROUTE 721 (IL 10)
SECTION (113RS-4, 124RS)
PROJECT F-0721(078)
RESURFACING (3P)
DEWITT COUNTY
E.C.L. OF CLINTON TO IL. 48

C-95-033-07



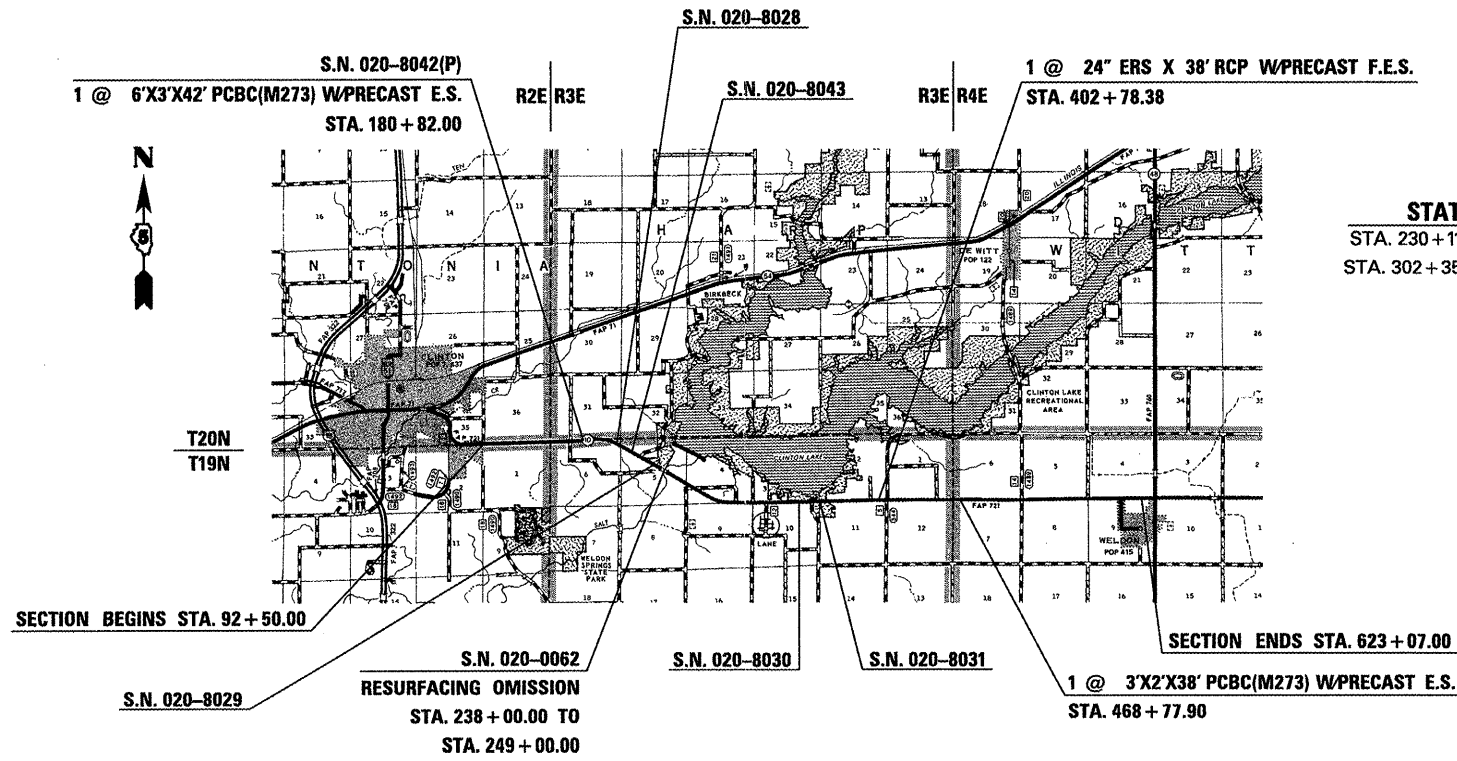
CURRENT ADT
 MINOR ARTERIAL
 FAP 721 (IL 10) = 1600 (2010)
 SU = 8.0% MU = 6.1%



FULL SIZE PLANS HAVE BEEN PREPARED USING STANDARD ENGINEERING SCALES. REDUCED SIZED PLANS WILL NOT CONFORM TO STANDARD SCALES. IN MAKING MEASUREMENTS ON REDUCED PLANS, THE ABOVE SCALES MAY BE USED.

J.U.L.I.E.
 JOINT UTILITY LOCATION INFORMATION FOR EXCAVATION
 1-800-892-0123 TOWNSHIPS: CLINTONIA, TEXAS, HARP, CREEK, NIXON
 OR 811

PROJECT ENGINEER: NANCY FASIG
SQUAD LEADER: STEVE COOMBS
DESIGNER: BEN OGLE
 (217) 465-4181
CONTRACT NO. 70660



STATION EQUATIONS

STA. 230+11.82 BK	=	230+21.51 AH
STA. 302+35.00 BK	=	286+01.80 AH

GROSS LENGTH = 54,680.51 FT. = 10.356 MILE
 NET LENGTH = 53580.51 FT. = 10.148 MILE

STATE OF ILLINOIS
 DEPARTMENT OF TRANSPORTATION
 DIVISION OF HIGHWAYS

SUBMITTED 2/4 20 11
David L. Owen
 DEPUTY DIRECTOR OF HIGHWAYS, REGION ENGINEER

March 25 20 11
Scott E. Stitt P.E., B.S.
 acting ENGINEER OF DESIGN AND ENVIRONMENT

March 25 20 11
Christine M. Reed
 DIRECTOR OF HIGHWAYS, CHIEF ENGINEER

PRINTED BY THE AUTHORITY
OF THE STATE OF ILLINOIS