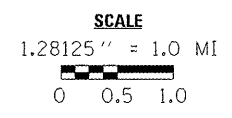
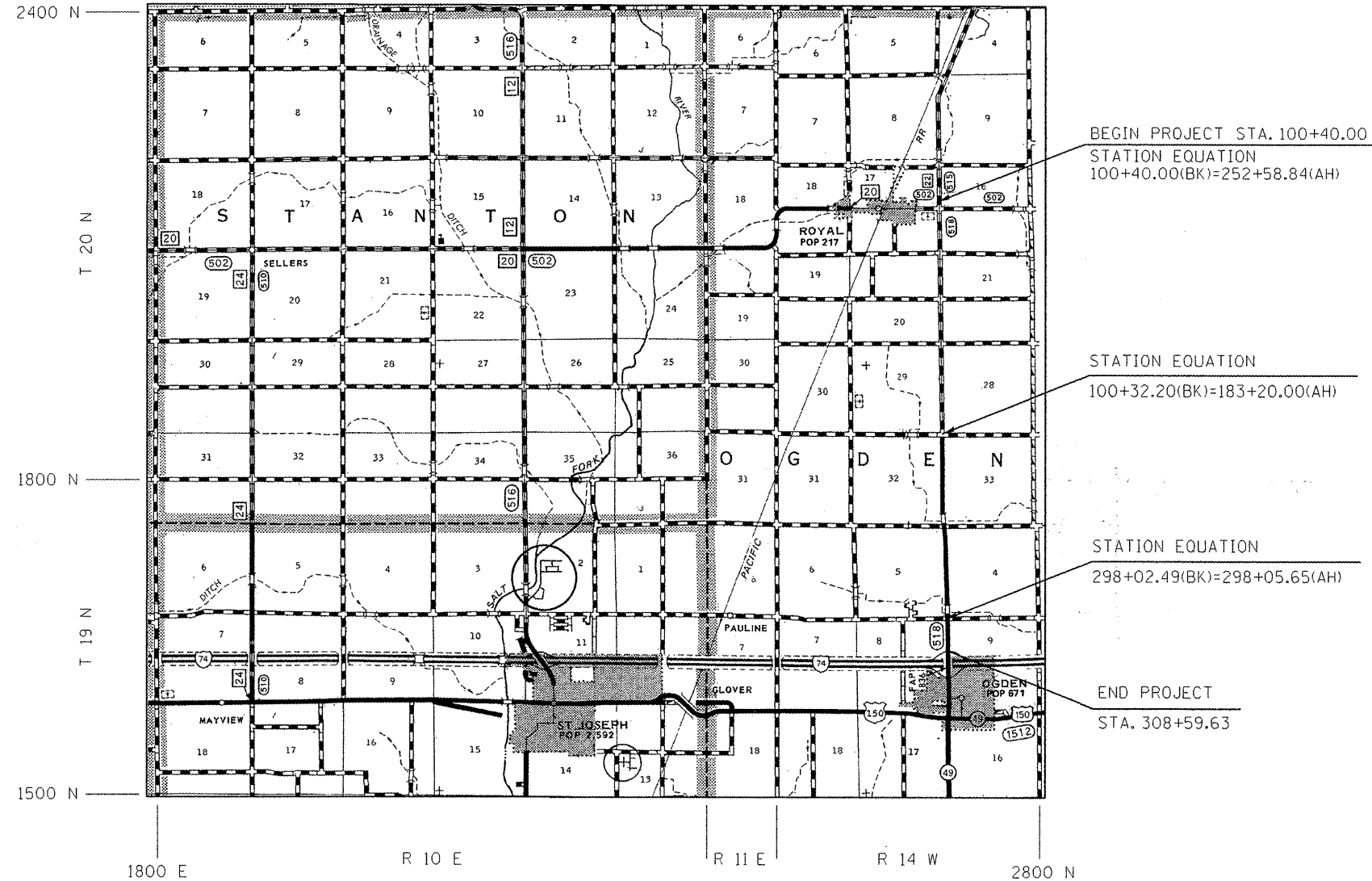


# LOCATION MAP 2 – CHAMPAIGN COUNTY

## FAS 518 ( CH 22 ) FROM ROYAL ROAD TO I-74 NORTH OF OGDEN



GROSS LENGTH OF LOCATION #2 = 27763.11 FT. = 5.258 MILE  
NET LENGTH OF LOCATION #2 = 27763.11 FT. = 5.258 MILE

- \* D5 CRACK & JOINT SEAL 2011-2
- \*\* CHAMPAIGN, DOUGLAS, & VERMILION

FILE NAME :	USER NAME : p1ersonbr	DESIGNED -	REVISED -	<b>STATE OF ILLINOIS DEPARTMENT OF TRANSPORTATION</b>	<b>LOCATION MAP 2</b>			F.A. RTE.	SECTION	COUNTY	TOTAL SHEETS	SHEET NO.	
ct:\pwork\p1ridot\p1ersonbr\d0252772\05	9881-shr-cover.dgn	DRAWN -	REVISED -		SCALE:	SHEET NO.	OF	SHEETS	STA. 100+40.00 TO STA. 308+59.63	VAR.	**	29	4
	PLOT SCALE = 40.0000" / 1"	CHECKED -	REVISED -									CONTRACT NO. 70881	
	PLOT DATE = 2/4/2011	DATE -	REVISED -									ILLINOIS FED. AID PROJECT	