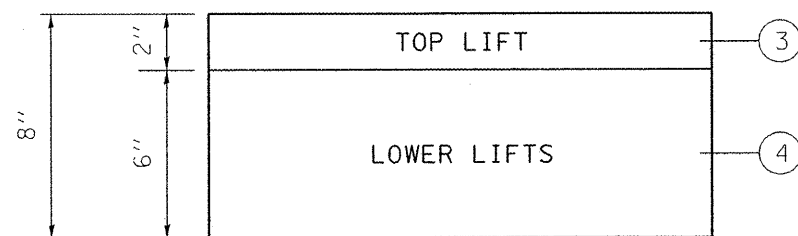


The following mixture requirements are applicable for this project:

Mixture Number	1	2	3	4
Mixture Use(s)	Interstate & Ramps Polymer HMA Binder	Interstate & Ramps Polymer HMA Surface	IL 138 Mainline, SN 059-0039; Interstate Shoulders; HMA Shoulders; 8" Shoulders (top lift 2" min.); & Incidental HMA Surfacing	HMA Shoulders 8" (Lower Lifts), HMA Base Course, Patching
AC/PG:	SBS PG70-22	SBS PG76-22	PG64-22	PG64-22
Design Air Voids:	4.0% @ N105	4.0% @ N105	4.0% @ N50	4.0% @ N50
Mixture Composition: (Gradation Mixture)	IL 19.0	IL 9.5 OR 12.5	IL 9.5 OR 12.5	IL 19.0
Friction Aggregate:	N/A	MIX "E"	MIX "C"	N/A

ASPHALT PAVING LIFT DIAGRAM



HOT-MIX ASPHALT SHOULDERS, 8"

FILE NAME =	USER NAME = coxte	DESIGNED -	REVISED -	STATE OF ILLINOIS DEPARTMENT OF TRANSPORTATION	MIXTURE REQUIREMENTS				F.A.I. RTE.	SECTION	COUNTY	TOTAL SHEETS	SHEET NO.	
c:\pwwork\pido\coxte\dms62217\067292	-sht-gennote.dgn	DRAWN -	REVISED -		SCALE:	SHEET NO.	OF	SHEETS	STA.	TO STA.	55	(59,68)RS-3,BR	137	3
		CHECKED -	REVISED -											
		DATE -	REVISED -											
	PLOT DATE = Feb-07-2011 01:25:24PM								ILLINOIS FED. AID PROJECT		CONTRACT NO. 72921			
											MONTGOMERY, MACOUPIN			