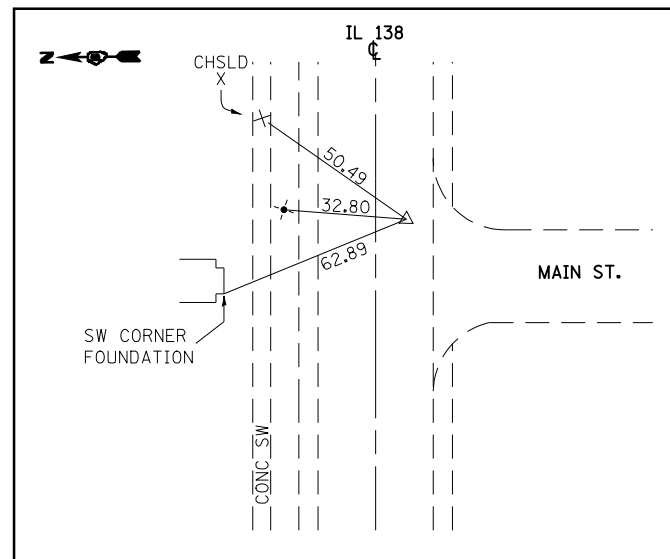
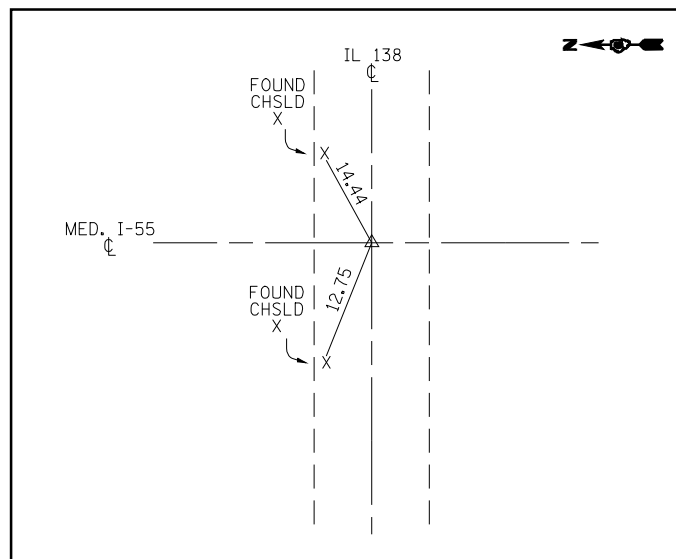


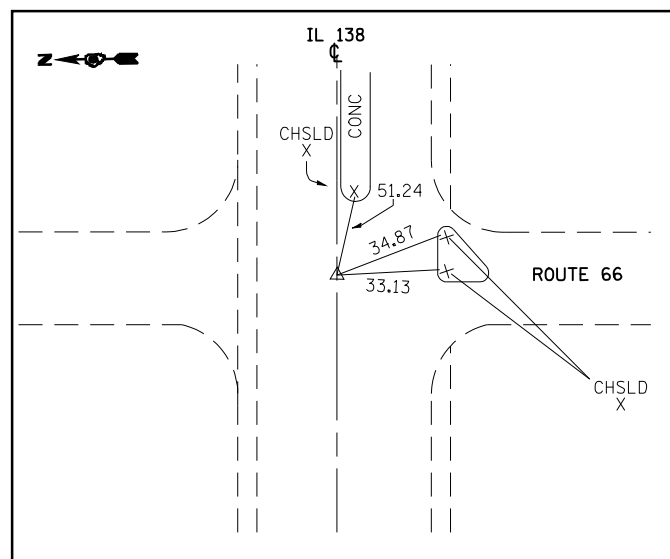
SURVEY DISC; SECTION CORNER
(CHSLD "X")



POT STA. 78+99.865
(PK NAIL IN CHSLD "X")



POT STA. 100+00
(STAR DRILL IN CHSLD "X")



POT STA. 114+73.626
(PK NAIL IN CHSLD "X")

- BM TB-34 : SET CHSLD "□" CENTER W HEADWALL, NW QUAD US 66 & IL 138
NAVD '88 = 658.876
- BM TA-1 : SET CHSLD "X" ON N BOLT OF LARGE LIGHT POLE #M1, 0.107 MILE E OF CL MEDIAN I-55 & S OF IL 138
NAVD '88 = 658.221
- BM TA-2 : SET CHSLD "□" ON PARAPET WALL @ NE CORNER OF SN 059-0039
NAVD '88 = 662.387
- BM TA-3 : SET CHSLD "X" S BOLT OF LARGE LIGHT POLE #M3, 0.111 MILE WEST OF CL MEDIAN I-55 & N SIDE OF IL 138
NAVD '88 = 656.381
- PSM @ 637+85.47, I-55
NAVD '88 = 648.267

FILE NAME =	USER NAME = coxte	DESIGNED -	REVISED -
et:\pw\work\p\dot\coxte\dms62217\067292	-sht-ATB.dgn	DRAWN -	REVISED -
	PLOT SCALE = 40.0000' / IN.	CHECKED -	REVISED -
	PLOT DATE = Feb-07-2011 02:00:27PM	DATE -	REVISED -

STATE OF ILLINOIS
DEPARTMENT OF TRANSPORTATION

CROSS TIES AND
BENCHMARKS

SCALE: SHEET NO. OF SHEETS STA. TO STA.

F.A.I. RTE.	SECTION	COUNTY	TOTAL SHEETS	SHEET NO.
55	(59,68)RS-3,BR	•	137	31
			CONTRACT NO. 72921	

ILLINOIS FED. AID PROJECT

MONTGOMERY, MACOUPIN