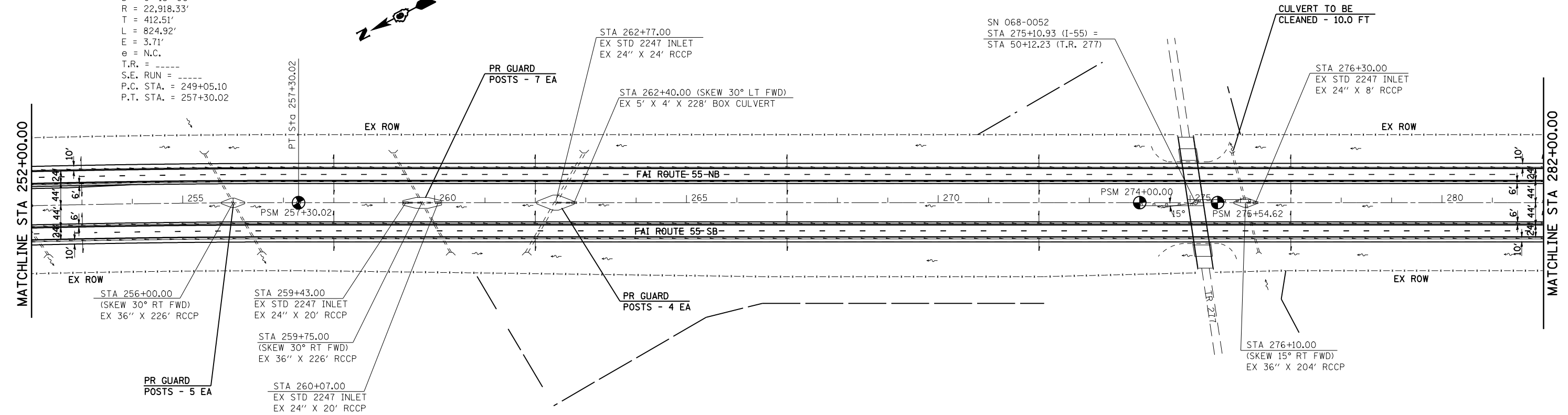


EXIST. CURVE 30004
 PI STA. = 253+17.60
 $\Delta = 2^\circ 03' 44''$ (RT)
 $D = 0^\circ 15' 00''$
 $R = 22,918.33'$
 $T = 412.51'$
 $L = 824.92'$
 $E = 3.71'$
 $e = \text{N.C.}$
 $T.R. = \text{-----}$
 $S.E. \text{ RUN} = \text{-----}$
 $P.C. \text{ STA.} = 249+05.10$
 $P.T. \text{ STA.} = 257+30.02$

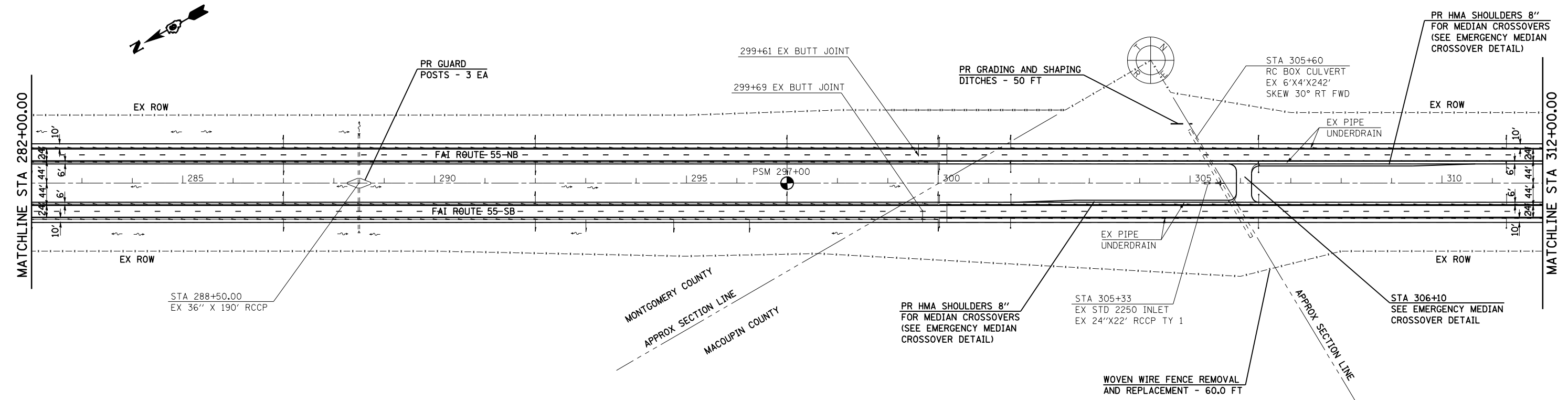
SEC 7, T8N, R5W, 3RD PM

SEE GENERAL NOTE #23 FOR
 OVERHEAD CLEARANCE REQUIREMENTS



SEC 7, T8N, R5W, 3RD PM

SEC 13, T8N, R6W, 3RD PM



FILE NAME =	USER NAME = coxte	DESIGNED -	REVISED -
ei:\pw_work\p1dot\coxte\dms62217\067292	-sht-plan100.dgn	DRAWN -	REVISED -
	PLOT SCALE = 200.0000' / IN.	CHECKED -	REVISED -
	PLOT DATE = Feb-07-2011 02:00:40PM	DATE -	REVISED -

STATE OF ILLINOIS
 DEPARTMENT OF TRANSPORTATION

I-55 PLAN SHEETS

SCALE: 1" = 100' SHEET NO. OF SHEETS STA. TO STA.

F.A.I. RTE.	SECTION	COUNTY	TOTAL SHEETS	SHEET NO.
55	(59,68)RS-3,BR		137	34
CONTRACT NO. 72921				

ILLINOIS FED. AID PROJECT
 MONTGOMERY, MACOUPIN